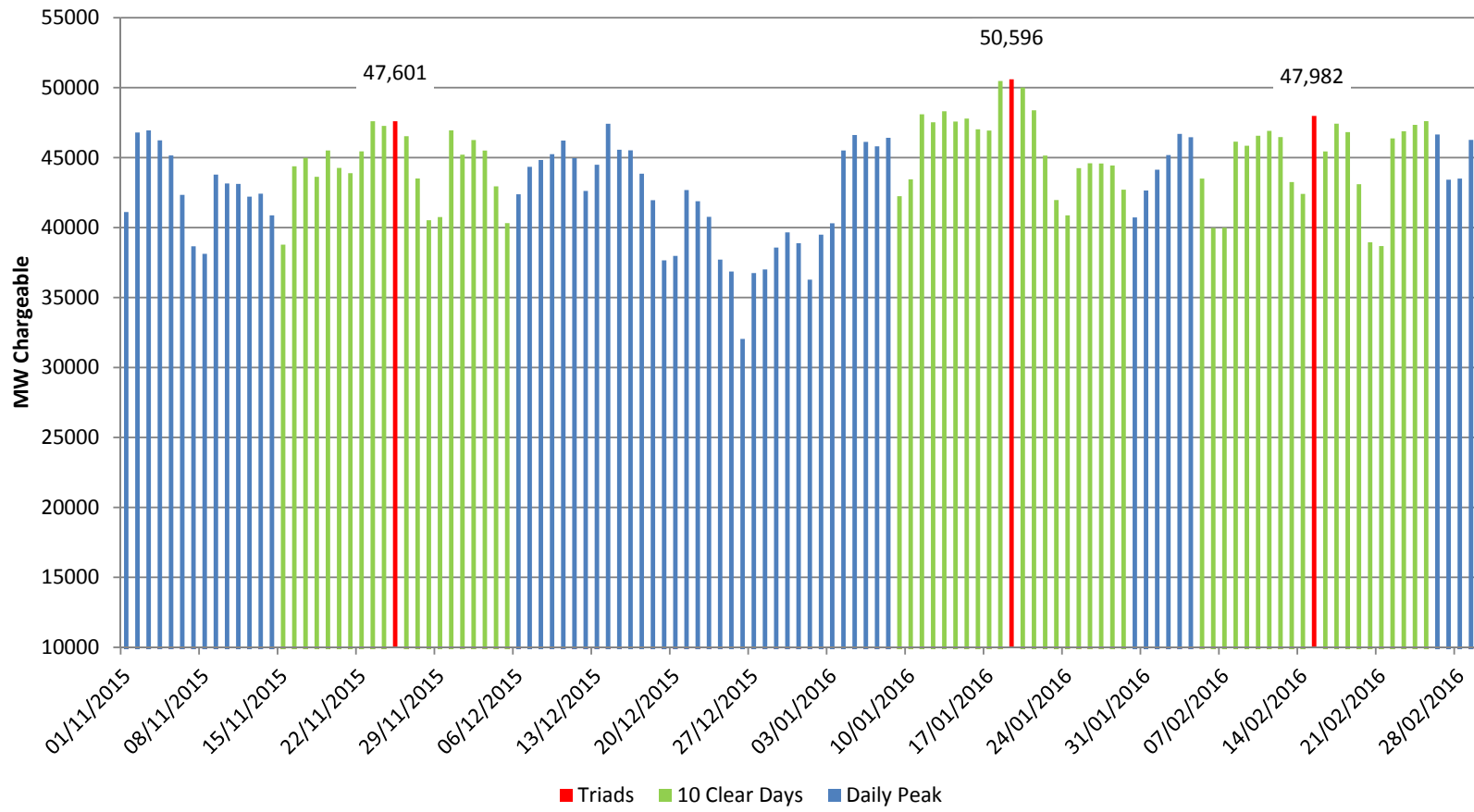


Winter 2015/16 Triads



The Triads are the three half hour settlement periods of highest GB demand between November and February inclusive. Triads can occur in any settlement period but are separated from each other by a minimum of ten full days. (See Section 14 of the Connection and Use of System Code.)

Triads are decided using the latest available settlement data when they are calculated in March. The run types are Settlement Final (SF); 1st Reconciliation (R1); 2nd Reconciliation (R2). Subsequent settlement data may change demands but the triads are not re-calculated.

Date	Half Hour Ending	Settlement Period	Demand (MW)	Settlement Run
Sunday 1-Nov-15	18:00	SP36	41,110.252	R2
Monday 2-Nov-15	18:00	SP36	46,794.316	R2
Tuesday 3-Nov-15	17:30	SP35	46,941.138	R2
Wednesday 4-Nov-15	17:30	SP35	46,237.248	R2
Thursday 5-Nov-15	17:30	SP35	45,155.762	R2
Friday 6-Nov-15	17:30	SP35	42,336.778	R2
Saturday 7-Nov-15	17:30	SP35	38,661.964	R2
Sunday 8-Nov-15	17:30	SP35	38,125.146	R2
Monday 9-Nov-15	17:30	SP35	43,787.540	R2
Tuesday 10-Nov-15	17:30	SP35	43,152.926	R2
Wednesday 11-Nov-15	17:30	SP35	43,122.536	R2
Thursday 12-Nov-15	17:30	SP35	42,211.302	R2
Friday 13-Nov-15	17:30	SP35	42,421.864	R2
Saturday 14-Nov-15	17:30	SP35	40,870.492	R2
Sunday 15-Nov-15	17:30	SP35	38,778.956	R2
Monday 16-Nov-15	17:30	SP35	44,376.372	R2
Tuesday 17-Nov-15	17:30	SP35	44,979.422	R2
Wednesday 18-Nov-15	17:30	SP35	43,626.334	R2
Thursday 19-Nov-15	17:30	SP35	45,509.870	R2
Friday 20-Nov-15	17:30	SP35	44,261.616	R2
Saturday 21-Nov-15	18:00	SP36	43,888.452	R2
Sunday 22-Nov-15	17:30	SP35	45,444.264	R2
Monday 23-Nov-15	17:30	SP35	47,600.634	R2
Tuesday 24-Nov-15	17:30	SP35	47,266.798	R2
Wednesday 25-Nov-15	17:30	SP35	47,600.672	R2
Thursday 26-Nov-15	17:30	SP35	46,533.172	R2
Friday 27-Nov-15	17:30	SP35	43,504.156	R1
Saturday 28-Nov-15	17:30	SP35	40,523.604	R1
Sunday 29-Nov-15	17:30	SP35	40,752.772	R1
Monday 30-Nov-15	17:30	SP35	46,947.492	R1
Tuesday 1-Dec-15	17:30	SP35	45,208.876	R1
Wednesday 2-Dec-15	17:30	SP35	46,253.796	R1
Thursday 3-Dec-15	17:30	SP35	45,503.260	R1
Friday 4-Dec-15	17:30	SP35	42,946.206	R1
Saturday 5-Dec-15	17:30	SP35	40,319.920	R1
Sunday 6-Dec-15	17:30	SP35	42,381.658	R1
Monday 7-Dec-15	17:30	SP35	44,339.354	R1
Tuesday 8-Dec-15	17:30	SP35	44,827.752	R1
Wednesday 9-Dec-15	17:30	SP35	45,244.060	R1
Thursday 10-Dec-15	17:30	SP35	46,218.512	R1
Friday 11-Dec-15	17:30	SP35	44,962.694	R1
Saturday 12-Dec-15	17:30	SP35	42,619.164	R1
Sunday 13-Dec-15	17:30	SP35	44,490.494	R1
Monday 14-Dec-15	17:30	SP35	47,416.892	R1
Tuesday 15-Dec-15	17:00	SP34	45,562.214	R1
Wednesday 16-Dec-15	17:30	SP35	45,519.670	R1
Thursday 17-Dec-15	17:30	SP35	43,849.186	R1
Friday 18-Dec-15	17:30	SP35	41,956.396	R1
Saturday 19-Dec-15	18:00	SP36	37,659.822	R1
Sunday 20-Dec-15	17:30	SP35	37,972.654	R1
Monday 21-Dec-15	17:30	SP35	42,681.464	R1
Tuesday 22-Dec-15	17:30	SP35	41,883.802	R1
Wednesday 23-Dec-15	17:30	SP35	40,769.232	R1
Thursday 24-Dec-15	17:30	SP35	37,710.778	R1
Friday 25-Dec-15	13:00	SP26	36,861.384	R1
Saturday 26-Dec-15	17:30	SP35	32,042.682	R1
Sunday 27-Dec-15	17:30	SP35	36,747.244	R1
Monday 28-Dec-15	17:30	SP35	37,005.148	R1
Tuesday 29-Dec-15	17:30	SP35	38,572.598	R1
Wednesday 30-Dec-15	18:00	SP36	39,655.686	R1
Thursday 31-Dec-15	17:30	SP35	38,879.060	R1

Date	Half Hour Ending	Settlement Period	Demand (MW)	Settlement Run
Friday 1-Jan-16	17:30	SP35	36,275.730	R1
Saturday 2-Jan-16	17:30	SP35	39,494.922	R1
Sunday 3-Jan-16	17:30	SP35	40,304.652	R1
Monday 4-Jan-16	17:30	SP35	45,509.262	R1
Tuesday 5-Jan-16	17:30	SP35	46,613.094	R1
Wednesday 6-Jan-16	17:30	SP35	46,121.892	R1
Thursday 7-Jan-16	17:30	SP35	45,804.260	R1
Friday 8-Jan-16	17:30	SP35	46,416.592	R1
Saturday 9-Jan-16	17:30	SP35	42,240.250	R1
Sunday 10-Jan-16	17:30	SP35	43,448.436	R1
Monday 11-Jan-16	17:30	SP35	48,096.600	R1
Tuesday 12-Jan-16	17:30	SP35	47,527.616	R1
Wednesday 13-Jan-16	17:30	SP35	48,314.708	R1
Thursday 14-Jan-16	17:30	SP35	47,579.052	R1
Friday 15-Jan-16	17:30	SP35	47,787.996	R1
Saturday 16-Jan-16	18:00	SP36	47,023.820	R1
Sunday 17-Jan-16	17:30	SP35	46,932.160	R1
Monday 18-Jan-16	17:30	SP35	50,477.572	R1
Tuesday 19-Jan-16	17:30	SP35	50,596.494	R1
Wednesday 20-Jan-16	17:30	SP35	50,011.610	R1
Thursday 21-Jan-16	17:30	SP35	48,383.604	R1
Friday 22-Jan-16	18:00	SP36	45,144.516	R1
Saturday 23-Jan-16	18:00	SP36	41,968.764	R1
Sunday 24-Jan-16	18:00	SP36	40,874.808	R1
Monday 25-Jan-16	18:00	SP36	44,245.176	R1
Tuesday 26-Jan-16	17:30	SP35	44,596.118	R1
Wednesday 27-Jan-16	18:00	SP36	44,577.374	R1
Thursday 28-Jan-16	18:00	SP36	44,435.290	R1
Friday 29-Jan-16	17:30	SP35	42,706.690	R1
Saturday 30-Jan-16	18:00	SP36	40,723.908	R1
Sunday 31-Jan-16	18:00	SP36	42,651.652	R1
Monday 1-Feb-16	18:00	SP36	44,133.524	R1
Tuesday 2-Feb-16	18:00	SP36	45,182.244	R1
Wednesday 3-Feb-16	18:00	SP36	46,696.212	SF
Thursday 4-Feb-16	18:00	SP36	46,458.404	SF
Friday 5-Feb-16	18:00	SP36	43,499.836	SF
Saturday 6-Feb-16	18:00	SP36	39,971.654	SF
Sunday 7-Feb-16	18:00	SP36	39,992.110	SF
Monday 8-Feb-16	18:00	SP36	46,139.098	SF
Tuesday 9-Feb-16	18:00	SP36	45,848.032	SF
Wednesday 10-Feb-16	18:30	SP37	46,563.508	SF
Thursday 11-Feb-16	18:30	SP37	46,909.892	SF
Friday 12-Feb-16	18:00	SP36	46,467.722	SF
Saturday 13-Feb-16	18:00	SP36	43,254.744	SF
Sunday 14-Feb-16	18:30	SP37	42,404.996	SF
Monday 15-Feb-16	18:30	SP37	47,981.948	SF
Tuesday 16-Feb-16	18:30	SP37	45,440.392	SF
Wednesday 17-Feb-16	18:00	SP36	47,426.934	SF
Thursday 18-Feb-16	18:30	SP37	46,822.800	SF
Friday 19-Feb-16	18:30	SP37	43,100.206	SF
Saturday 20-Feb-16	18:30	SP37	38,948.998	SF
Sunday 21-Feb-16	18:30	SP37	38,678.906	SF
Monday 22-Feb-16	18:30	SP37	46,370.608	SF
Tuesday 23-Feb-16	18:30	SP37	46,886.156	SF
Wednesday 24-Feb-16	18:30	SP37	47,339.936	SF
Thursday 25-Feb-16	18:30	SP37	47,603.190	SF
Friday 26-Feb-16	18:30	SP37	46,653.520	SF
Saturday 27-Feb-16	18:30	SP37	43,422.292	SF
Sunday 28-Feb-16	18:30	SP37	43,502.660	SF
Monday 29-Feb-16	18:30	SP37	46,268.446	SF