

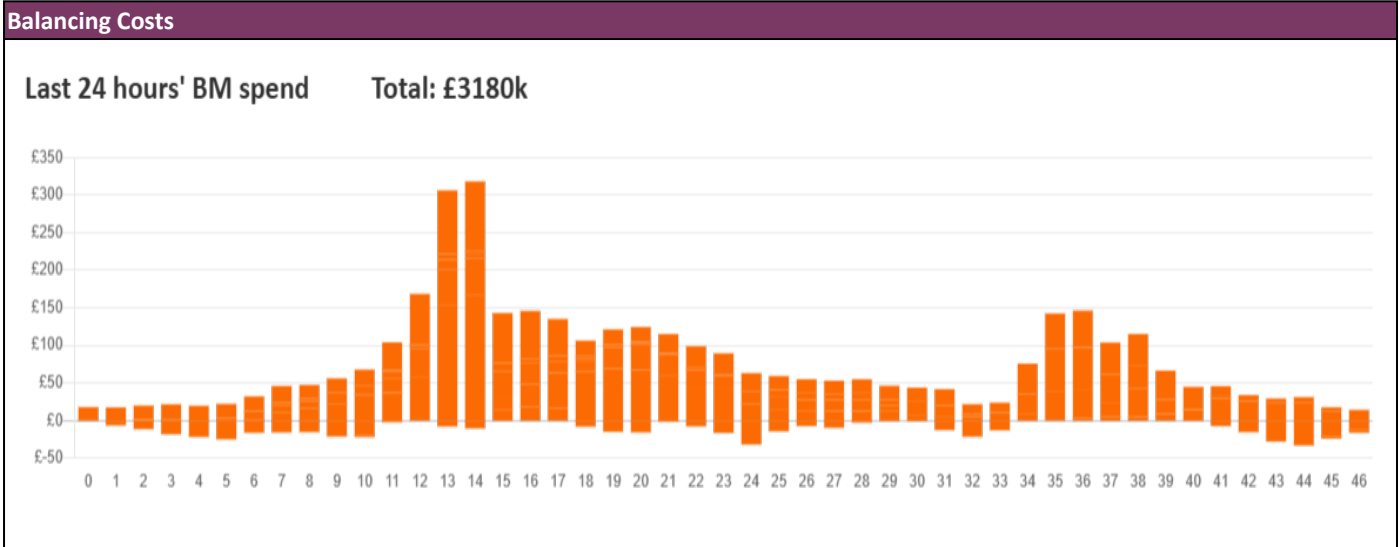
**NESO**  
**National Electricity**  
**Transmission**  
**System**  
Status report



NESO National Electricity Transmission System Status Report  
Tuesday 01 April 2025

Today's High Level Risk Status Forecast for the next 24h			
General Status		Voltage	
Demand		System Inertia	
System Margins		Weather	
Generation		Transmission	
Active Constraints			
<a href="#">System Warning</a>			

<a href="#">Today's Minimum De-Rated Margin</a>	11,246 MW (SP 16)	
Current BMU Largest Loss Risk	Generation	1400 MW
	Demand	560 MW



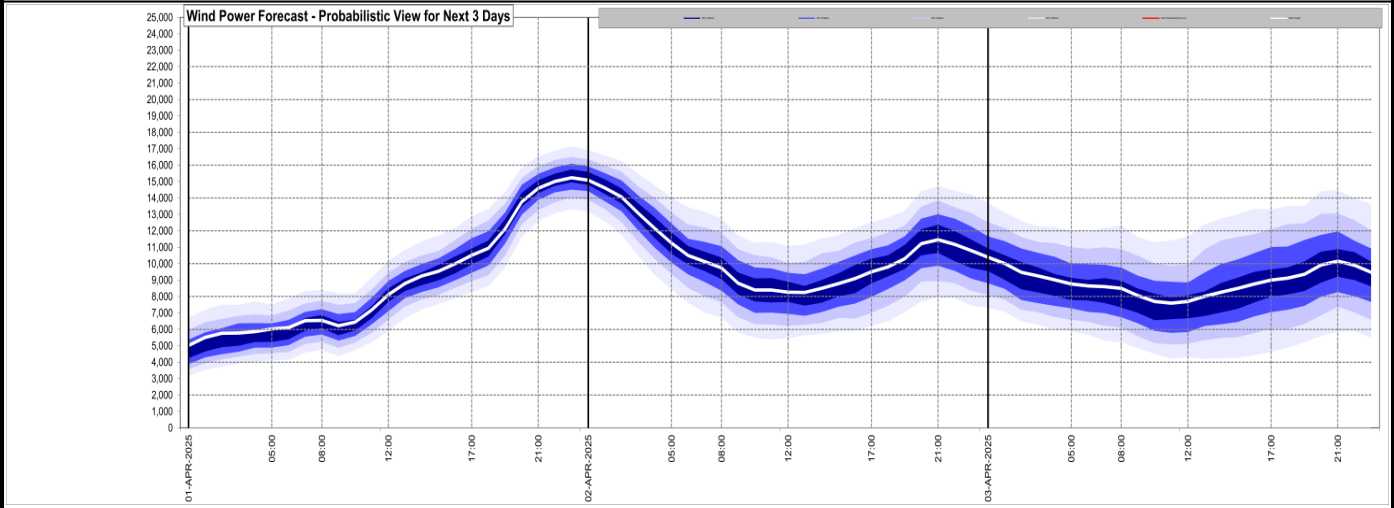
**Yesterday's Market Summary**

<a href="#">Cash Out Price (Max)</a>	£155.00 /MWh
<a href="#">Cash Out Price (Min)</a>	£40.50 MWh
<a href="#">Peak Demand Yesterday</a>	32,669 MW
<a href="#">Minimum Demand</a>	21,534 MW

**Interconnector Net Transfer Capacity (MWs)**

Today	Import	Export	Remarks
Netherlands (BritNed)	1000	1000	Fully Available
France (IFA)	1000	1000	Partially Available - Planned Outage
Belgium (Nemo)	1000	1000	Fully Available
Ireland (EWIC)	500	500	Fully Available
France (ElecLink)	1000	1000	Fully Available
Northern Ireland (MOYLE)	450	450	Fully Available
Norway (NSL)	1400	1400	Fully Available
France (IFA2)	1000	1000	Fully Available
Viking Link	1400	1400	Fully Available
Ireland (GreenLink)	500	500	Fully Available

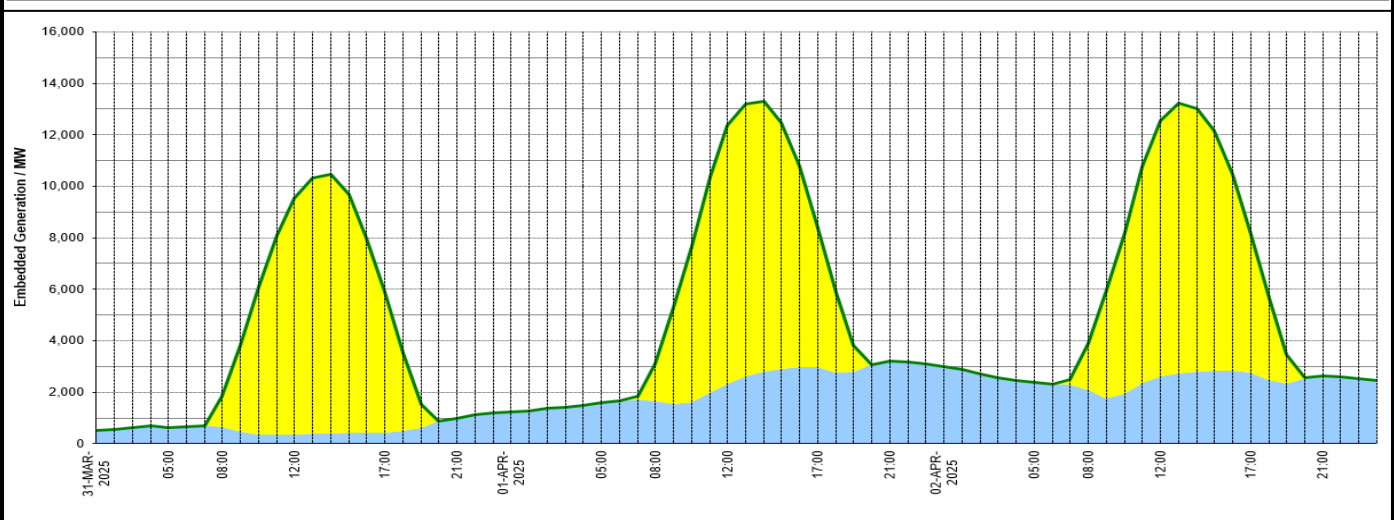
## Wind Power Forecast



## Expected embedded generation (MWs)

### Embedded Generation Forecast

	31-MAR-2025					01-APR-2025					02-APR-2025						
	05:00	08:00	12:00	17:00	21:00	00:00	05:00	08:00	12:00	17:00	21:00	00:00	05:00	08:00	12:00	17:00	21:00
Solar (MW)	0	1191	9171	5442	0	0	0	1450	10039	5391	0	0	0	1809	9910	5381	0
Wind (MW)	641	650	371	446	998	1235	1578	1659	2315	2983	3208	3002	2369	2068	2632	2764	2632
STOR (MW)	0	0	0	0	0	0	0	0	0	0	0	0	0	0	0	0	0
<b>Total (MW)</b>	<b>641</b>	<b>1841</b>	<b>9542</b>	<b>5888</b>	<b>998</b>	<b>1235</b>	<b>1578</b>	<b>3109</b>	<b>12354</b>	<b>8374</b>	<b>3208</b>	<b>3002</b>	<b>2369</b>	<b>3877</b>	<b>12542</b>	<b>8145</b>	<b>2632</b>



Weather	Source	Commentary
Latest forecast (Summary)	<a href="#">Met Office</a> <a href="#">SEPA</a> <a href="#">Natural Resources Wales</a>	<p><b>Today:</b> Plenty of sunshine for much of the UK, with any morning mist or fog patches soon clearing. Turning breezy in the south and west. Feeling warm in the sunshine, but fresh in the breeze, especially along coasts.</p> <p><b>Tonight:</b> A dry evening to come, with sunny skies ahead of dusk. Some low cloud and fog patches forming overnight. Chilly, with a patchy frost forming in the countryside.</p>
General Weather Concerns e.g. wind, rain, snow, flooding, GB Weather Warnings	<a href="#">Met Office</a> <a href="#">Weather Warnings</a> <a href="#">SEPA</a> <a href="#">Natural Resources Wales</a>	<p><b>UK Weather Warnings</b> No weather warnings are in force for the UK.</p> <p><b>Flood Warnings</b> 1 flood warning and 24 flood alerts issued for England. 0 flood warning and 0 flood alerts issued for Scotland. 0 flood warnings and 6 flood alerts issued for Wales.</p>

Contains public sector information licensed under the Open Government Licence v1.0

Further Information	
BM Reports	<a href="https://www.elexon.co.uk/data/kinnect-insights-solution/">https://www.elexon.co.uk/data/kinnect-insights-solution/</a>
System Balancing Reports	<a href="https://www.neso.energy/industry-information/industry-data-and-reports/system-balancing-reports">https://www.neso.energy/industry-information/industry-data-and-reports/system-balancing-reports</a>
Forecast Volumes and Costs	<a href="https://www.neso.energy/industry-information/industry-data-and-reports/forecast-volumes-and-costs">https://www.neso.energy/industry-information/industry-data-and-reports/forecast-volumes-and-costs</a>