

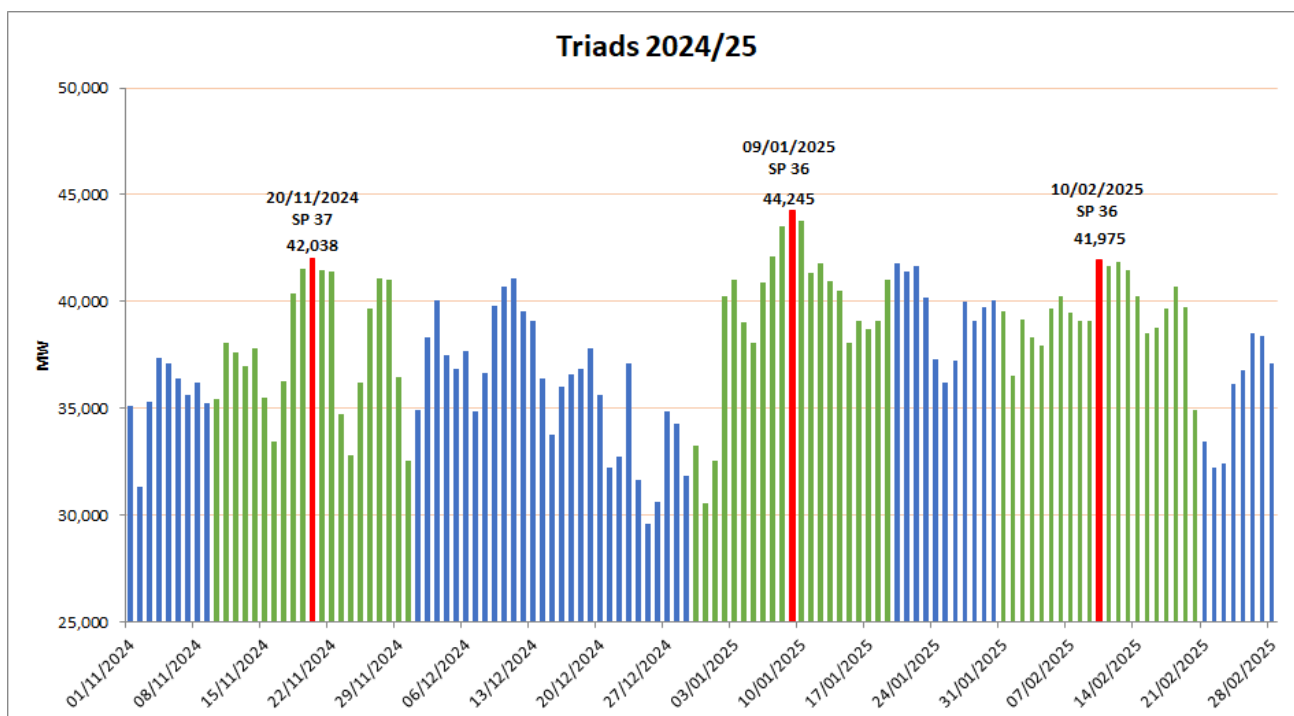
Triads 2024/25

In accordance with the Connection and Use of System Code (CUSC), the Triads for each charging year are calculated and published by National Grid Electricity System Operator using net system demand data (based on the latest available settlement metering) for each half hourly settlement period between November and February inclusive.

The Triads are the three half-hour settlement periods of highest net system demand on the GB electricity transmission system between November and February (inclusive) each year, separated by at least ten clear days. The Triads are used to determine TNUoS demand charges for customers with half hourly meters (see Section 14 of the CUSC).

The Triads for 2024/25 are:

Date	Settlement Period	Net System Demand (MW)
09/01/2025	36	44245
20/11/2024	37	42038
10/02/2025	36	41975



Public

Please see Appendix 1 for details of the half-hour settlement period of highest net system demand for each day between 1st November 2024 and 28th February 2025.

For more information about the Triads, please see our latest guide at this [link](#).

Alternatively, please contact the Revenue & Settlements team at

TNUoS.queries@nationalgrideso.com

Appendix 1: Daily half-hour settlement period of highest net system demand (Triads in blue)

Date	Half Hour Ending	Settlement Period	Demand (MW)	Settlement Run
Friday 1-Nov-24	18:00	36	35,104.176	R2
Saturday 2-Nov-24	18:30	37	31,328.690	R2
Sunday 3-Nov-24	18:00	36	35,279.424	R2
Monday 4-Nov-24	18:30	37	37,353.852	R2
Tuesday 5-Nov-24	17:30	35	37,084.592	R2
Wednesday 6-Nov-24	17:30	35	36,406.652	R2
Thursday 7-Nov-24	18:00	36	35,656.656	R2
Friday 8-Nov-24	17:30	35	36,187.238	R2
Saturday 9-Nov-24	18:00	36	35,222.228	R2
Sunday 10-Nov-24	17:30	35	35,413.108	R2
Monday 11-Nov-24	18:30	37	38,056.544	R2
Tuesday 12-Nov-24	18:30	37	37,617.124	R2
Wednesday 13-Nov-24	17:30	35	36,943.640	R2
Thursday 14-Nov-24	18:30	37	37,779.110	R2
Friday 15-Nov-24	17:30	35	35,524.394	R2
Saturday 16-Nov-24	18:00	36	33,440.916	R2
Sunday 17-Nov-24	17:30	35	36,298.704	R2
Monday 18-Nov-24	17:30	35	40,348.596	R2
Tuesday 19-Nov-24	17:30	35	41,561.698	R2
Wednesday 20-Nov-24	18:30	37	42,037.514	R2
Thursday 21-Nov-24	17:30	35	41,457.700	R2
Friday 22-Nov-24	17:30	35	41,421.648	R2
Saturday 23-Nov-24	17:30	35	34,701.138	R2
Sunday 24-Nov-24	18:00	36	32,830.446	R2
Monday 25-Nov-24	18:00	36	36,231.312	R2
Tuesday 26-Nov-24	18:00	36	39,697.330	R2
Wednesday 27-Nov-24	18:30	37	41,063.854	R2
Thursday 28-Nov-24	17:00	34	41,031.656	R2
Friday 29-Nov-24	17:30	35	36,490.958	R2
Saturday 30-Nov-24	17:30	35	32,567.906	R2
Sunday 1-Dec-24	17:30	35	34,902.840	R2
Monday 2-Dec-24	17:00	34	38,347.686	R2
Tuesday 3-Dec-24	17:30	35	40,028.302	R2
Wednesday 4-Dec-24	17:30	35	37,517.042	R2
Thursday 5-Dec-24	17:30	35	36,867.358	R2
Friday 6-Dec-24	17:00	34	37,685.538	R2
Saturday 7-Dec-24	17:30	35	34,853.746	R1
Sunday 8-Dec-24	17:30	35	36,621.288	R1
Monday 9-Dec-24	17:30	35	39,786.734	R1
Tuesday 10-Dec-24	17:00	34	40,697.596	R1
Wednesday 11-Dec-24	17:30	35	41,054.026	R1
Thursday 12-Dec-24	17:00	34	39,556.010	R1
Friday 13-Dec-24	17:30	35	39,108.594	R1
Saturday 14-Dec-24	18:00	36	36,379.594	R1
Sunday 15-Dec-24	18:00	36	33,770.992	R1
Monday 16-Dec-24	17:30	35	36,029.554	R1
Tuesday 17-Dec-24	17:30	35	36,603.844	R1
Wednesday 18-Dec-24	18:00	36	36,816.190	R1
Thursday 19-Dec-24	17:30	35	37,803.478	R1
Friday 20-Dec-24	17:00	34	35,635.816	R1
Saturday 21-Dec-24	17:30	35	32,232.494	R1
Sunday 22-Dec-24	18:00	36	32,705.640	R1
Monday 23-Dec-24	17:30	35	37,102.928	R1
Tuesday 24-Dec-24	17:30	35	31,629.068	R1
Wednesday 25-Dec-24	13:30	27	29,574.378	R1
Thursday 26-Dec-24	17:30	35	30,597.898	R1
Friday 27-Dec-24	18:00	36	34,825.996	R1
Saturday 28-Dec-24	17:30	35	34,271.056	R1
Sunday 29-Dec-24	18:30	37	31,850.212	R1
Monday 30-Dec-24	17:30	35	33,259.146	R1

Date	Half Hour Ending	Settlement Period	Demand (MW)	Settlement Run
Tuesday 31-Dec-24	17:30	35	30,539.704	R1
Wednesday 1-Jan-25	17:30	35	32,561.360	R1
Thursday 2-Jan-25	18:00	36	40,227.716	R1
Friday 3-Jan-25	17:30	35	41,000.598	R1
Saturday 4-Jan-25	18:00	36	39,035.554	R1
Sunday 5-Jan-25	18:00	36	38,043.660	R1
Monday 6-Jan-25	18:00	36	40,916.452	R1
Tuesday 7-Jan-25	18:00	36	42,097.616	R1
Wednesday 8-Jan-25	17:30	35	43,529.164	R1
Thursday 9-Jan-25	18:00	36	44,245.048	R1
Friday 10-Jan-25	18:00	36	43,766.346	R1
Saturday 11-Jan-25	18:00	36	41,353.186	R1
Sunday 12-Jan-25	17:30	35	41,770.340	R1
Monday 13-Jan-25	17:30	35	40,926.126	R1
Tuesday 14-Jan-25	18:00	36	40,478.814	R1
Wednesday 15-Jan-25	18:00	36	38,050.374	R1
Thursday 16-Jan-25	17:30	35	39,117.390	R1
Friday 17-Jan-25	18:00	36	38,733.330	R1
Saturday 18-Jan-25	18:30	37	39,089.602	R1
Sunday 19-Jan-25	17:30	35	40,990.630	R1
Monday 20-Jan-25	18:30	37	41,762.414	R1
Tuesday 21-Jan-25	17:30	35	41,378.062	R1
Wednesday 22-Jan-25	17:30	35	41,642.496	R1
Thursday 23-Jan-25	18:00	36	40,173.524	R1
Friday 24-Jan-25	18:00	36	37,277.486	R1
Saturday 25-Jan-25	18:00	36	36,182.360	R1
Sunday 26-Jan-25	17:30	35	37,235.940	R1
Monday 27-Jan-25	18:00	36	39,961.810	R1
Tuesday 28-Jan-25	18:00	36	39,089.566	R1
Wednesday 29-Jan-25	18:30	37	39,751.458	R1
Thursday 30-Jan-25	18:00	36	40,040.744	R1
Friday 31-Jan-25	18:00	36	39,560.254	R1
Saturday 1-Feb-25	18:00	36	36,552.506	R1
Sunday 2-Feb-25	18:00	36	39,188.632	R1
Monday 3-Feb-25	18:00	36	38,334.842	R1
Tuesday 4-Feb-25	18:30	37	37,922.358	R1
Wednesday 5-Feb-25	18:00	36	39,685.260	R1
Thursday 6-Feb-25	18:30	37	40,218.102	R1
Friday 7-Feb-25	18:00	36	39,446.040	R1
Saturday 8-Feb-25	18:00	36	39,078.024	R1
Sunday 9-Feb-25	18:00	36	39,105.662	R1
Monday 10-Feb-25	18:00	36	41,975.124	R1
Tuesday 11-Feb-25	17:30	35	41,635.580	R1
Wednesday 12-Feb-25	18:00	36	41,872.278	R1
Thursday 13-Feb-25	18:30	37	41,494.224	SF
Friday 14-Feb-25	18:00	36	40,229.004	SF
Saturday 15-Feb-25	18:00	36	38,500.352	SF
Sunday 16-Feb-25	18:00	36	38,775.710	SF
Monday 17-Feb-25	18:00	36	39,649.924	SF
Tuesday 18-Feb-25	18:30	37	40,726.178	SF
Wednesday 19-Feb-25	18:30	37	39,710.036	SF
Thursday 20-Feb-25	18:30	37	34,899.336	SF
Friday 21-Feb-25	18:30	37	33,472.942	SF
Saturday 22-Feb-25	18:30	37	32,230.524	SF
Sunday 23-Feb-25	18:00	36	32,383.804	SF
Monday 24-Feb-25	18:30	37	36,166.998	SF
Tuesday 25-Feb-25	19:30	39	36,806.900	SF
Wednesday 26-Feb-25	18:30	37	38,532.424	SF
Thursday 27-Feb-25	19:30	39	38,384.842	SF
Friday 28-Feb-25	18:30	37	37,110.416	SF

The settlement data run types are Initial Interim (II), Settlement Final (SF), 1st Reconciliation (R1) and 2nd Reconciliation (R2). Subsequent settlement data may change demand, but the triads are not re-calculated after publication. For further settlement data information please consult the Elexon website at <https://www.elexon.co.uk/>.