

Public

You have been joined in listen only mode with your camera turned off

Live captioning is available in Microsoft Teams

- Click on the 3 dots icon / 'More'
- Click 'Turn on live captions'

NESO Future of Registration Webinar

20 March 2025

Slido code
#3910311

Asking Questions

To ask questions live go to Sli.do event code # 3910311

- **Ask your questions as early as possible** as this will help us to provide more live answers.
- **Please provide your name or organisation.** This is a webinar for industry participants therefore questions from unidentified parties will not be answered live. If you have reasons to remain anonymous to the wider forum, please use the email options below.
- **Questions will be answered in the upvoted order whenever possible.** We will take questions from further down the list when: the answer is not ready, we need to take the question away or the topic is outside of the scope of this webinar.
- **Sli.do will remain open until 12:00**, even if the webinar closes earlier, to provide the maximum opportunity for you to ask questions. After that please use the email option below.
- **All questions will be recorded and published.** Questions which are not answered on the day will also be included, with answers, with the slide pack and webinar recording at: [Balancing Mechanism Wider Access | National Energy System Operator](#)
- **Ask questions anytime** whether for inclusion in the forum or individual response at: .box.bmu.registration@nationalenergyso.com

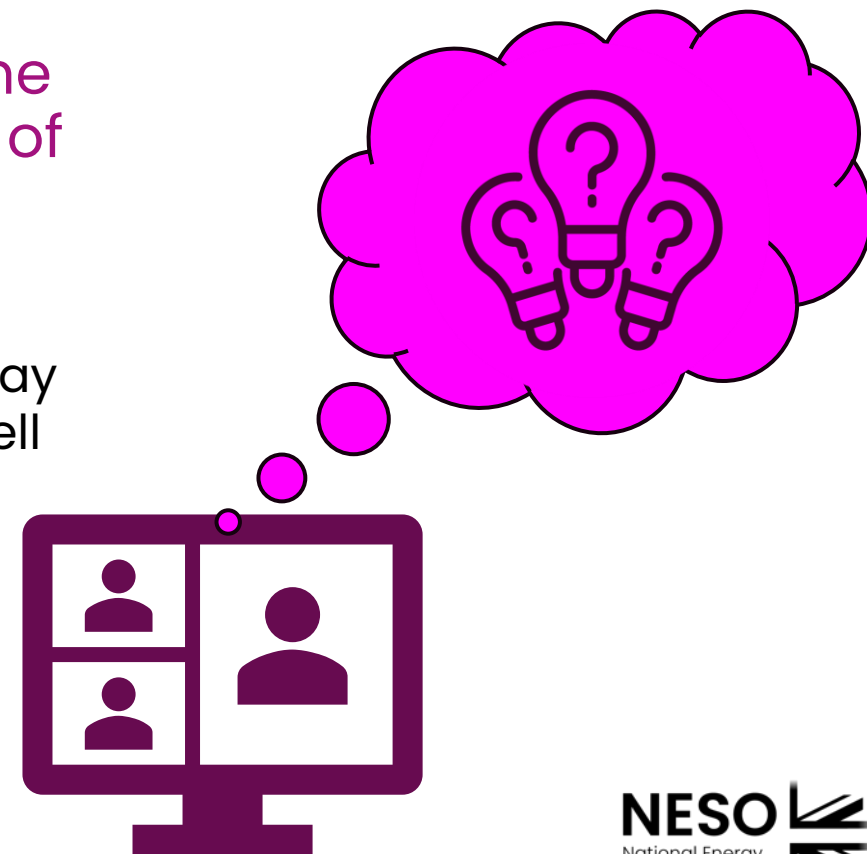
What else would you like to hear about at the Onboarding and Registration webinars in the future?

Slido code
#3910311

In recent webinars we have focussed on the on the Future of Registrations, particularly the migration of BM Registrations to the Single Markets Platform.

Now we would like to know what topics you are interested to hear more about in the future webinars. Please use Slido today or email us at: bmu.registration@nationalenergyso.com to tell us what you would like to hear more about.

Thank you for your support



Contents

Slido code
#3910311

What has changed?

**How we need you to support
the transition?**

**What support and resources
will be available for this?**

Your questions answered

What's been delivered

14th Feb

Code Deployment – Completed

1. Salesforce code with new BM registration except interconnectors & supplier Base units has been successfully deployed into production
2. To complete the new BM registration SMP has also migrated enabler data (Trading Agent, Trading Agent Version, Control Point, Control Point version, BM Station) on SMP production

17th to 26th Feb

Data Migration – Completed

1. Completed data migration all BM & NBMU except interconnectors & supplier Base units from old CRM to SMP after following a complete due diligence of data sanity
2. All loaded data will be exposed to market providers and NESO downstream systems

28th Feb

Complete BM registration delivery – Completed

1. Completed the BM registration delivery including, code, Data migration, & data flow to downstream to live BM systems

What's next

28th March

Interconnector User Registration

Salesforce code with Interconnector User Registration except Supplier Base units will be deployed into production

29th to 30th Mar

Data Migration

Commence data migration of all the units of Interconnector Users, Interconnector Cables, Supplier Base BMUs and all the other units descoped for Day 1 data migration

16th April

Supplier Base BMU Registration

Salesforce code for the Registration team to register Supplier Base BMUs from backend will be deployed into production

Coming Up...

Q1 25/26

Interconnectors, Supplier Base units & SMP APIs

1. SMP will onboard registration of Interconnector users & Supplier base units
2. Extending SMP APIs to allow registration of aggregated BMUs made up of multiple assets automatically with control point & trading agent data
3. Enabling versioning of units whenever there is a change in capacity to keep track of the unit history

Q3 25/26

Enhancements to BM registration

1. Onboard Interconnector Cable registration on SMP

Q4 25/26

Explore Automation and User feedback

1. Explore more automation opportunities i.e. a potential to connect directly with Elexon
2. Opportunity to enhance process based on external and internal user feedback

**How do we need you
to support the
transition?**

**What support and
resources will be
available for this?**

Before we can fully reopen SMP functions we need users to validate their unit information

Examples of blank fields

- Grid Supply Point (GSP) or GSP Group
- Unit/asset location information: postal address, latitude and longitude, etc

Examples of “placeholder data”

- Fuel Type = Other: SMP now has an expanded pick list for fuel types, please choose the one which applies for each asset
- Connection type = Firm: SMP provides for different connection types
- Unit capacity (generation and/or demand) different to capacity recorded with Elexon and/or other BM systems
- Contact details for some or all parties for Unit
 - Telephone country code and number
 - Address: incomplete e.g. street and/or postcode missing or incomplete

Unit information means all BMU and non-BMU information (including asset details) held in SMP following the migration activities during February.

Mandatory fields (identified by * in unit, asset and service screens) MUST be validated.

Please note following migration:

- Some fields are blank (usually because at the time of registration we didn't ask you to provide this information). These fields will need to be completed.
- Some fields have “placeholder data” (usually because the data was not collected previously or failed verification e.g. telephone numbers with 9 or 12 digits and/or spaces).

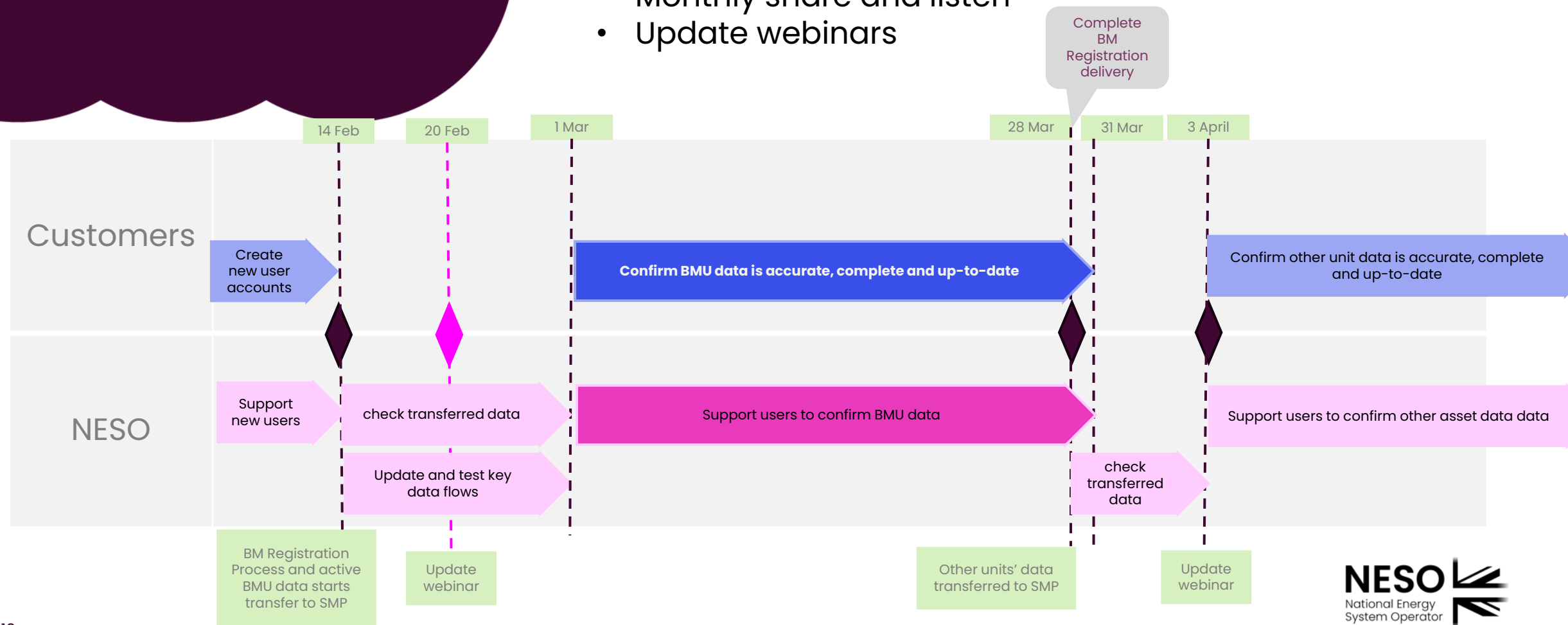
Please provide details of the additions/corrections needed to the Registrations Team at:
.box.bmu.registration@nationalenergyso.com

Timeline of changes and activities

NESO support for SMP Users will include:

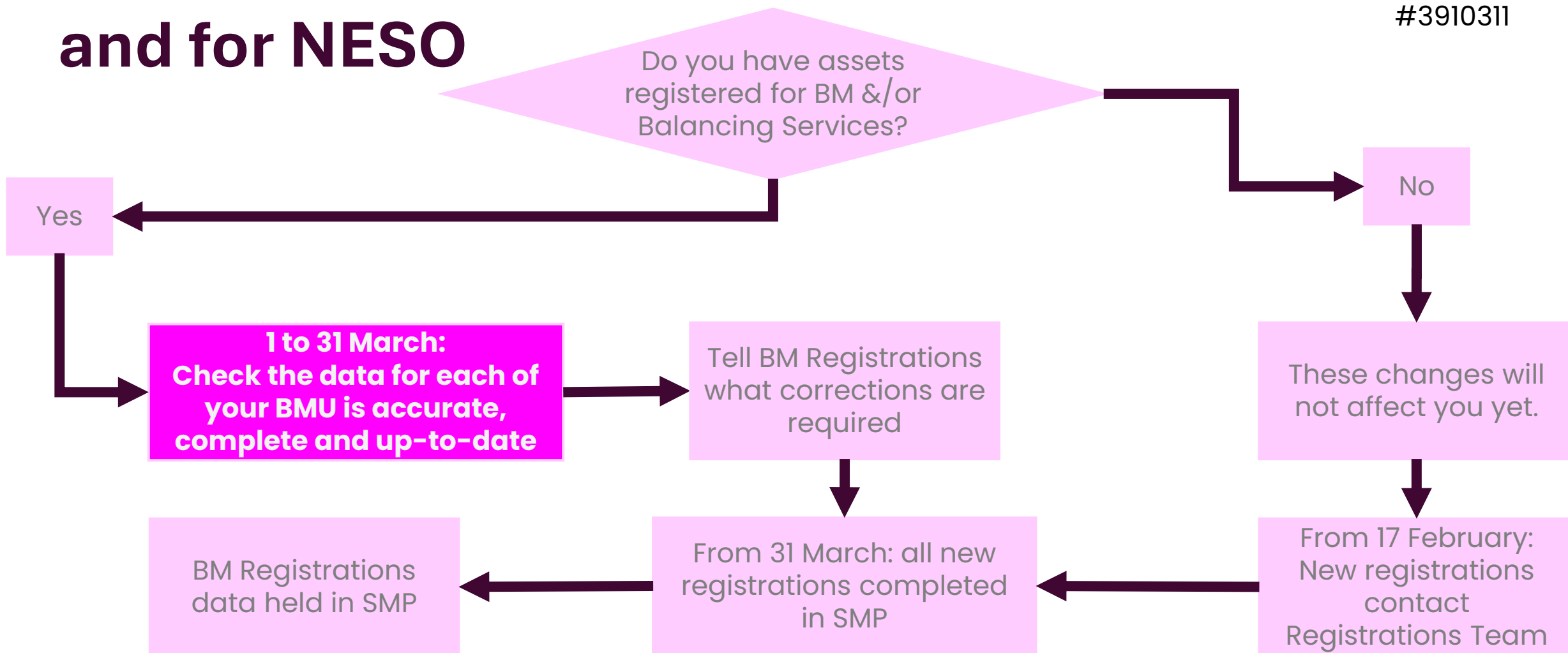
- Registration team and account manager calls
- Daily drop-in surgeries
- Monthly share and listen
- Update webinars

Slido code
#3910311



What this means for you, our customers, and for NESO

Slido code
#3910311



Next steps

Please note: registration requirements have changed over time and also differ between BM and non-BM.

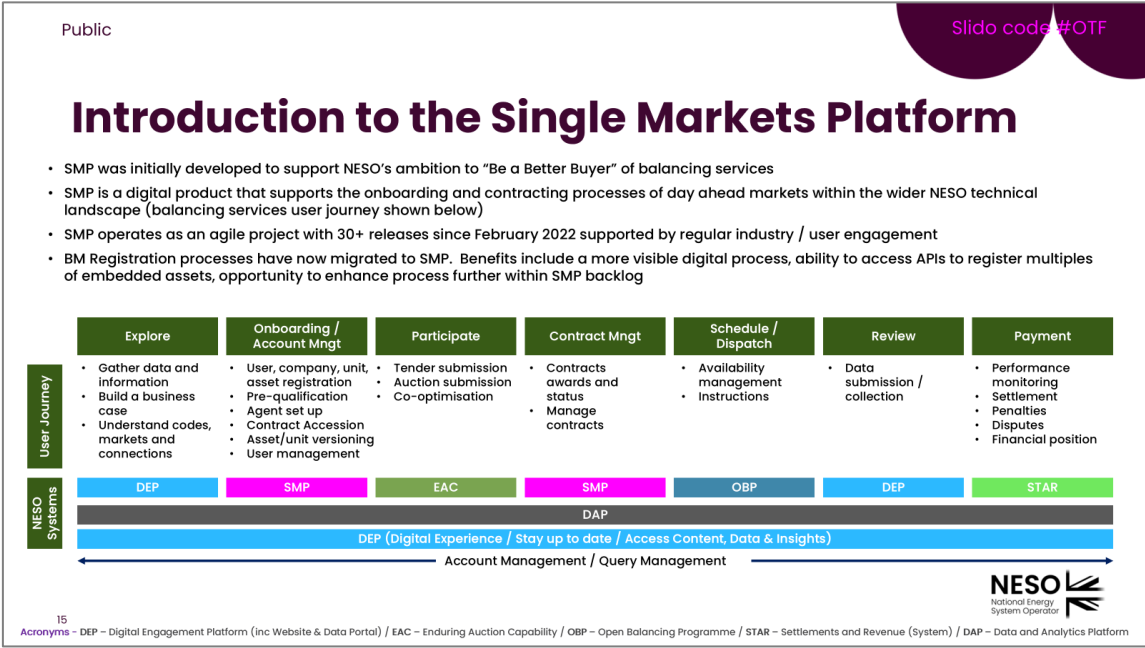
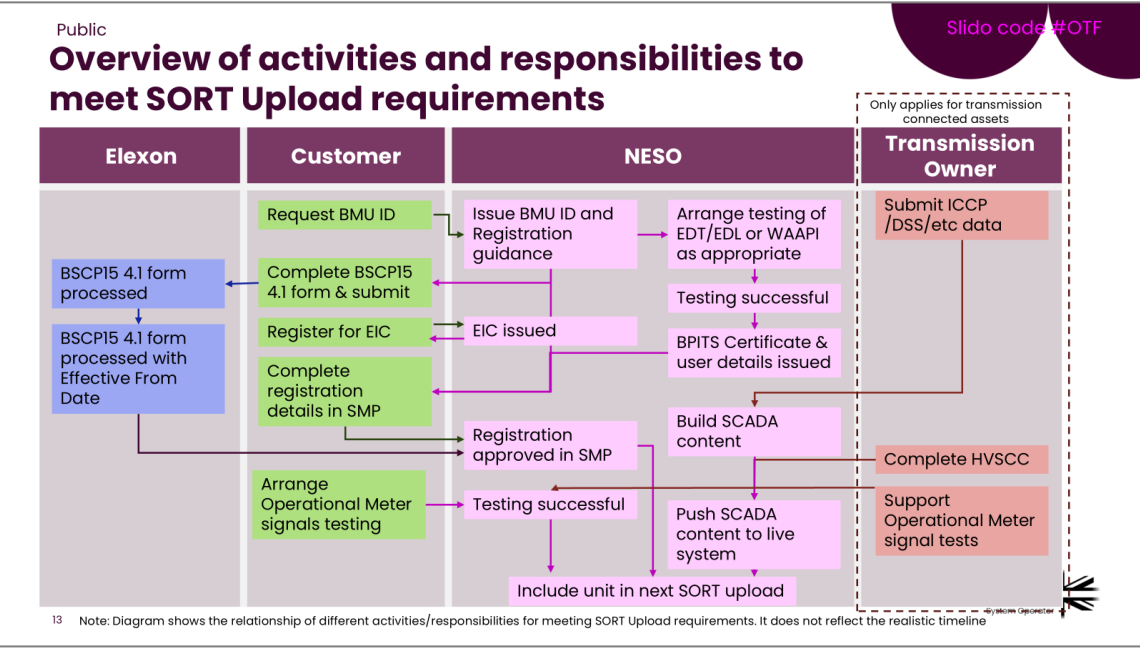
This means, depending on the length of time a unit has been registered and the type of registration, we may need you to provide additional information about a unit.

- By 1 March:
 - Registration and SMP teams completed quality checks on active BMU data migrated to SMP
 - SMP Team completed next SMP release on 28 February
- By 31 March:
 - Registration and Contract teams will contact SMP Users with more information about the validation activities to be completed in March
 - SMP Users to validate migrated data and notify Registration team of changes needed to ensure they are correct and complete.
 - We will support SMP Users (see next slide)
 - Registration and SMP teams will prepare remaining legacy data for migration (Interconnector and Supplier BMU data scheduled for migration from 28 March).
- From 1 April
 - All new registrations completed in SMP

Registration and SMP presentation to OTF

Slido code
#3910311

We provided an overview of the BM Registration process and an update on SMP at the Operational Transparency Forum (OTF) on 12 March. To watch again go to: [12 Mar 2025 BM Reg and SMP Deep Dive](#) or find it through the web page: [Operational Transparency Forum | National Energy System Operator](#)



How we will support you and what resources will be available for this

Single Markets Platform team:

- Show and Listen
- Webpage (Market Information tab) [Single Markets Platform | National Energy System Operator](#)

Registrations:

- Daily drop in surgeries
- .box.bmu.registration@nationalenergyso.com
- [Balancing Mechanism Wider Access | National Energy System Operator](#)

SBMU Virtual Lead Party Registrations:

- commercial.operation@nationalenergyso.com
- [Balancing Mechanism Wider Access | National Energy System Operator](#)

Slido code
#3910311

Your questions from Slido

slido



Audience Q&A

① Start presenting to display the audience questions on this slide.

Thank you for joining us

Reminders:

Slido is open until 12:00

Next SMP Show & Listen: 27 March

Next update Webinar: 15 May

Requests:

If you have not already registered to receive updates and webinar invitations, please contact:
.box.bmu.registration@nationalenergyso.com

Slido code
#3910311