

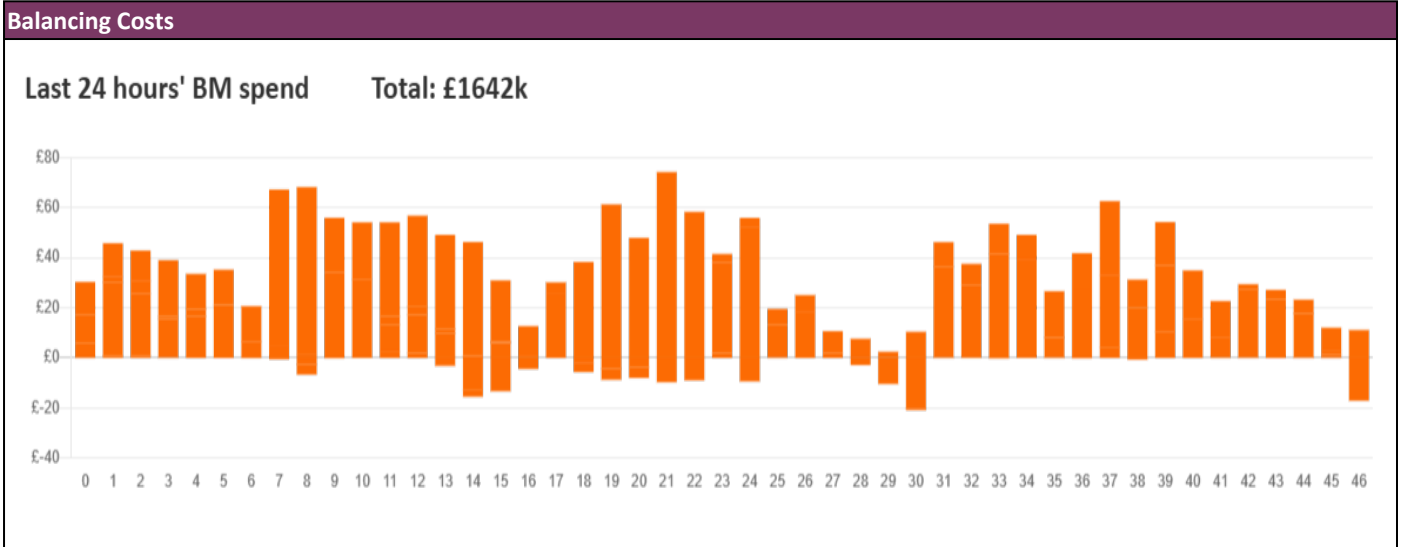
**NESO**  
**National Electricity**  
**Transmission**  
**System**  
Status report



NESO National Electricity Transmission System Status Report  
Monday 24 March 2025

Today's High Level Risk Status Forecast for the next 24h			
General Status		Voltage	
Demand		System Inertia	
System Margins		Weather	
Generation		Transmission	
Active Constraints			
<a href="#">System Warning</a>			

<a href="#">Today's Minimum De-Rated Margin</a>	9,173 MW (SP 38)	
Current BMU Largest Loss Risk	Generation	1400 MW
	Demand	1150 MW



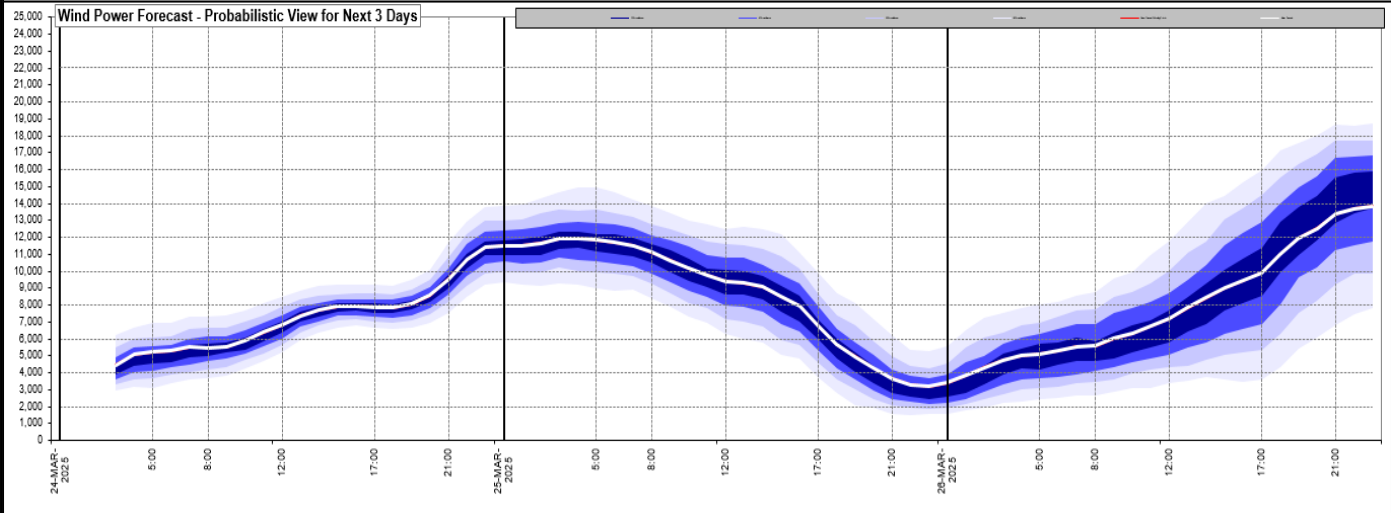
**Yesterday's Market Summary**

<a href="#">Cash Out Price (Max)</a>	150.00 £/MWh (SP 20-24 & 26)
<a href="#">Cash Out Price (Min)</a>	34.34 £/MWh (SP 7, 10-14)
<a href="#">Peak Demand Yesterday</a>	35,976 MW (SP 37)
<a href="#">Minimum Demand</a>	19,454 MW (SP 12)

**Interconnector Net Transfer Capacity (MWs)**

Today	Import	Export	Remarks
Netherlands (BritNed)	1000	1000	Fully Available
France (IFA)	2000	2000	Fully Available
Belgium (Nemo)	1000	1000	Fully Available
Ireland (EWIC)	500	500	Fully Available
France (ElecLink)	1000	1000	Fully Available
Northern Ireland (MOYLE)	450	450	Fully Available
Norway (NSL)	1400	1400	Fully Available
France (IFA2)	1000	1000	Fully Available
Viking Link	1400	1400	Fully Available
Ireland (GreenLink)	500	500	Fully Available

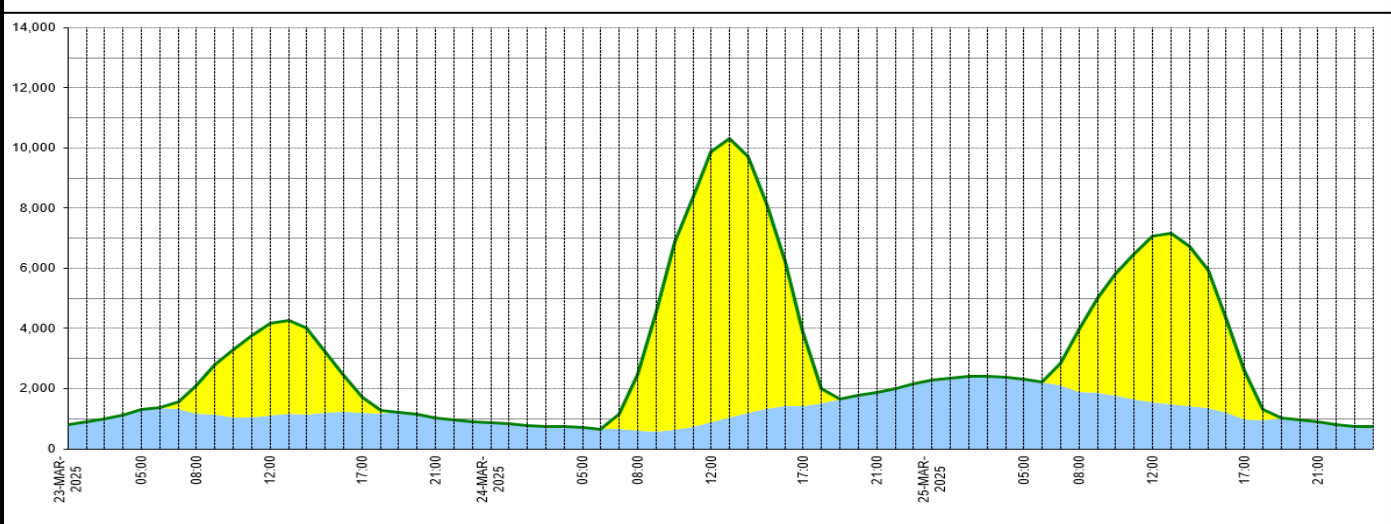
### Wind Power Forecast



### Expected embedded generation (MW)

#### Embedded Generation Forecast

	23-MAR-2025					24-MAR-2025					25-MAR-2025						
	05:00	08:00	12:00	17:00	21:00	00:00	05:00	08:00	12:00	17:00	21:00	00:00	05:00	08:00	12:00	17:00	21:00
Solar (MW)	0	916	3045	533	0	0	0	1892	8996	2475	0	0	0	2068	5531	1614	0
Wind (MW)	1299	1181	1117	1198	1020	874	696	603	883	1425	1868	2271	2309	1903	1545	988	888
STOR (MW)	0	0	0	0	0	0	0	0	0	0	0	0	0	0	0	0	0
<b>Total (MW)</b>	<b>1299</b>	<b>2097</b>	<b>4162</b>	<b>1731</b>	<b>1020</b>	<b>874</b>	<b>724</b>	<b>2479</b>	<b>9879</b>	<b>3900</b>	<b>1868</b>	<b>2271</b>	<b>2309</b>	<b>3971</b>	<b>7076</b>	<b>2602</b>	<b>888</b>



Weather	Source	Commentary
Latest forecast (Summary)	<a href="#">Met Office</a> <a href="#">SEPA</a> <a href="#">Natural Resources Wales</a>	<p><b>Today:</b> Low cloud and hill fog across much of England and Wales this morning will slowly lift and clear to leave a fine day with some warm sunny spells. Dry and sunny at first across the northwest, but rain arriving later.</p> <p><b>Tonight:</b> Dry in southern England and Wales tonight with a patchy frost. Cloudier elsewhere with outbreaks of rain spreading south overnight.</p>
General Weather Concerns e.g. wind, rain, snow, flooding, GB Weather Warnings	<a href="#">Met Office</a> <a href="#">Weather Warnings</a> <a href="#">SEPA</a> <a href="#">Natural Resources Wales</a>	<p><b>UK Weather Warnings</b> No weather warnings are in force for the UK.</p> <p><b>Flood Warnings</b> 1 flood warnings and 20 flood alerts issued for England. 0 flood warnings and 0 flood alerts issued for Scotland. 0 flood warnings and 0 flood alerts issued for Wales.</p>

Contains public sector information licensed under the Open Government Licence v1.0

Further Information	
BM Reports	<a href="https://www.elexon.co.uk/data/kinnect-insights-solution/">https://www.elexon.co.uk/data/kinnect-insights-solution/</a>
System Balancing Reports	<a href="https://www.neso.energy/industry-information/industry-data-and-reports/system-balancing-reports">https://www.neso.energy/industry-information/industry-data-and-reports/system-balancing-reports</a>
Forecast Volumes and Costs	<a href="https://www.neso.energy/industry-information/industry-data-and-reports/forecast-volumes-and-costs">https://www.neso.energy/industry-information/industry-data-and-reports/forecast-volumes-and-costs</a>