

Date:

Monday 03 Mar 2025

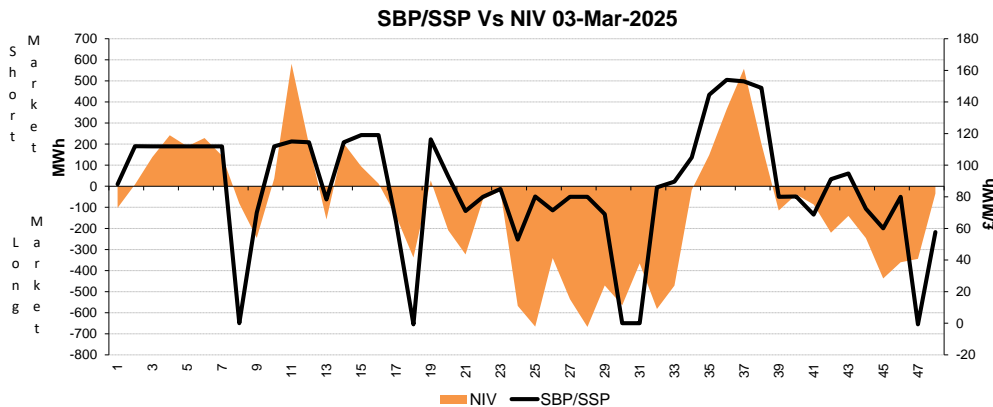
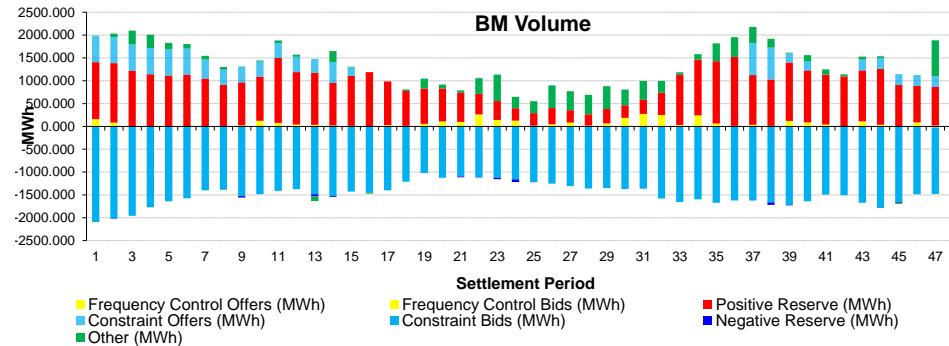
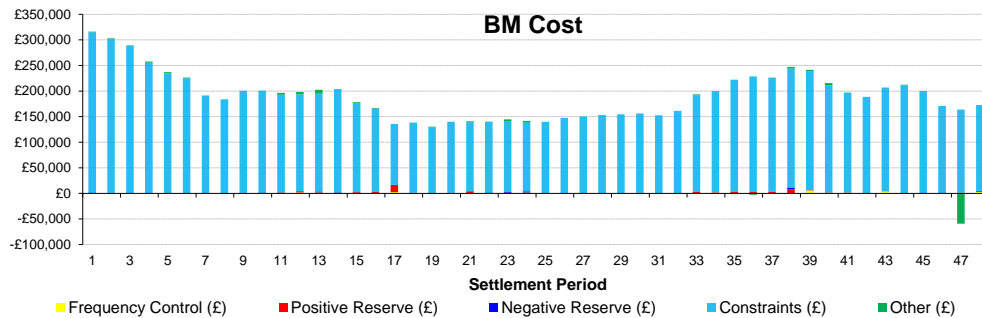
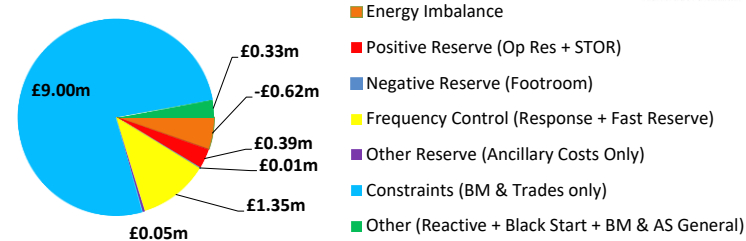
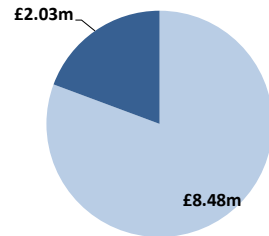
BSUoS Final Tariff: £12.17/MWh

Total Outturn: £10.51m

Daily Balancing Costs



- BM Cost (Indicative)
- AS Cost (Estimate)



Commentary

The market was alternating between long and short throughout the day. Trades were required for Margin. Trades and BM Actions were required to manage thermal constraints in Scotland and England throughout the day. Trades and BM Actions supported Voltage Control.