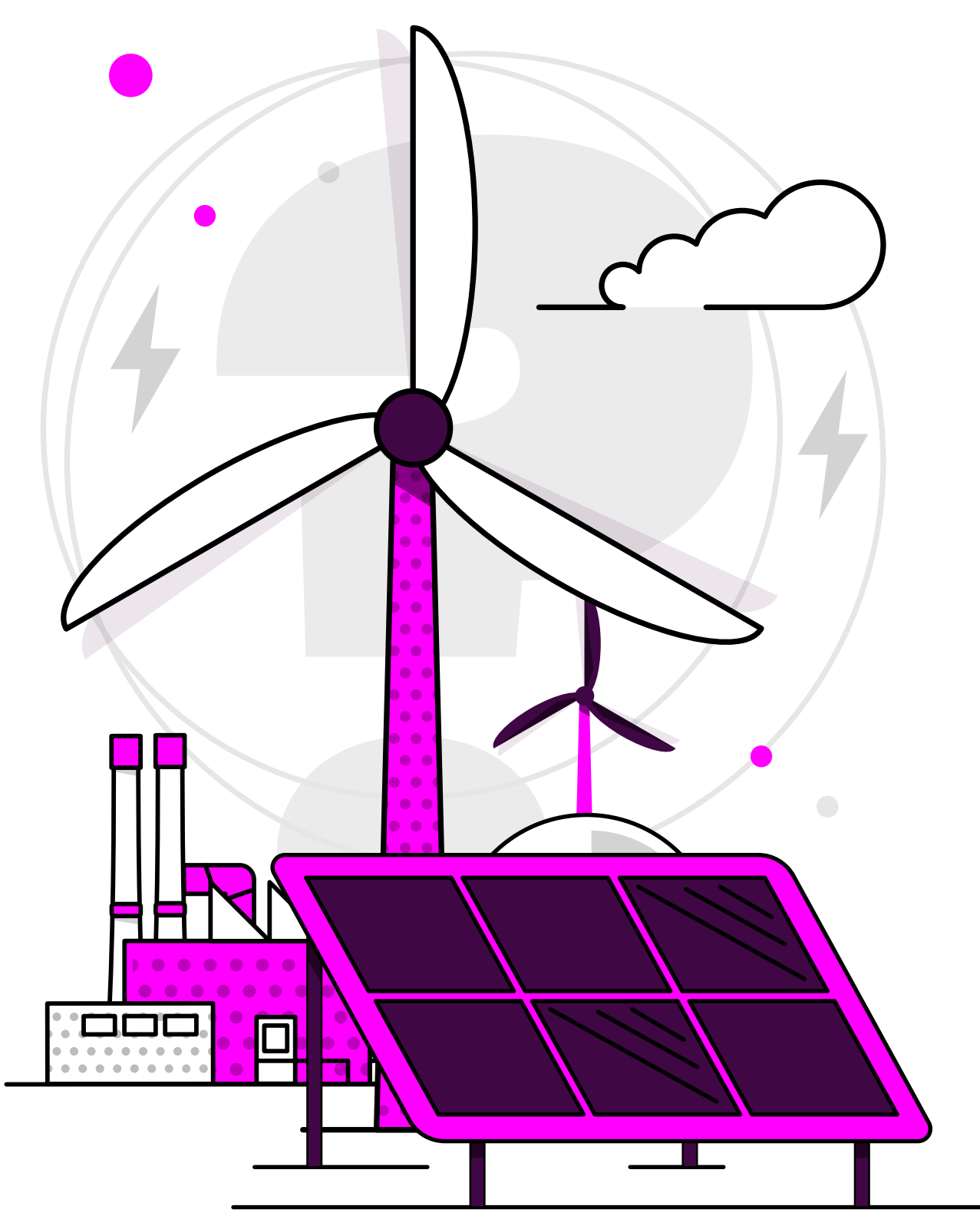


# Britain's Energy Explained: February 2025

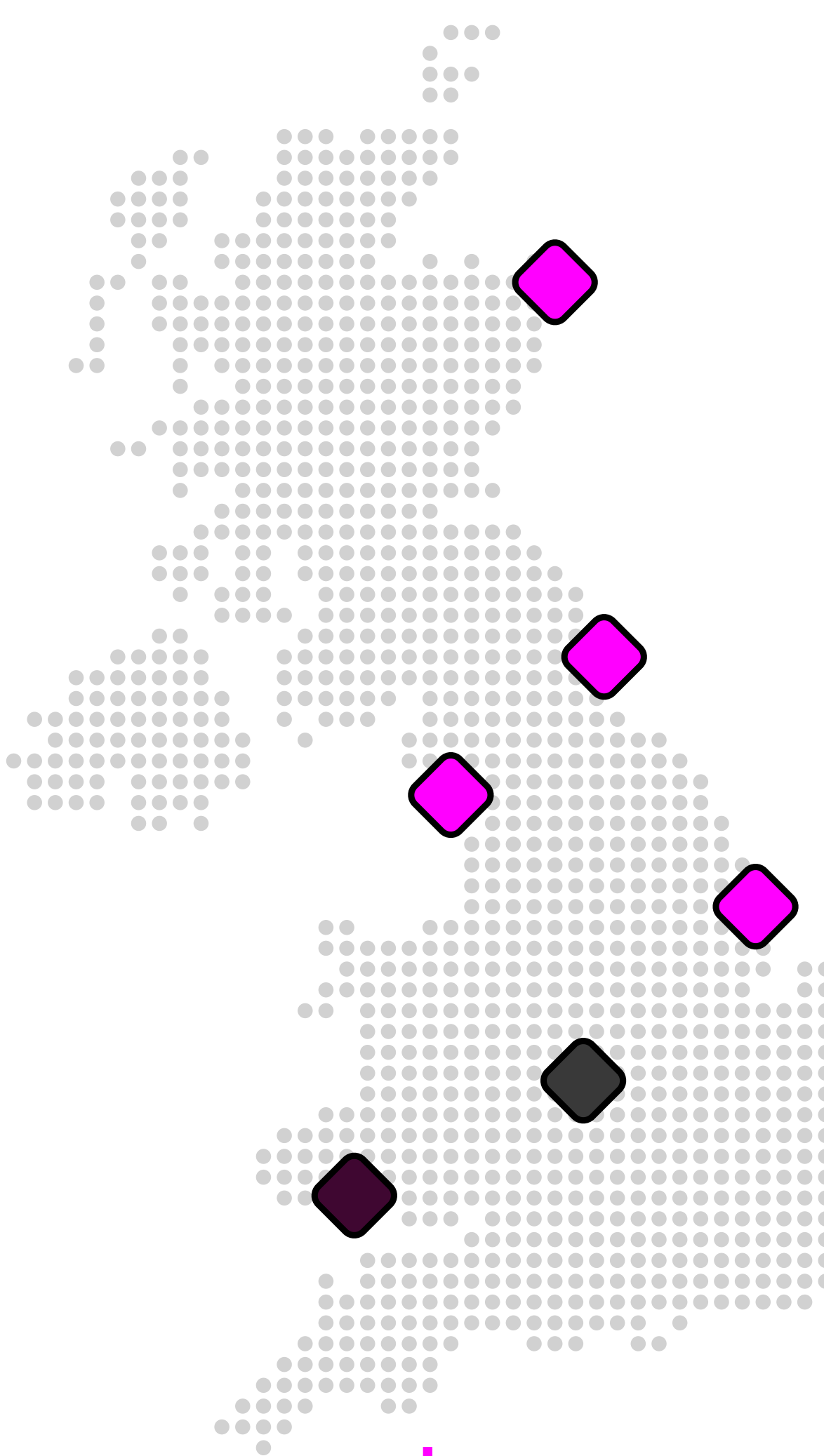


## How was our electricity generated?



		change from previous month
Gas	32.6%	5.7% ▼
Wind	31.5%	4.8% ▲
Nuclear	11.7%	0.2% ▲
Biomass	7%	0.6% ▲
Solar	2.4%	0.8% ▲
Imports	11.6%	0.1% ▼
Hydro	1.9%	0.4% ▼
Storage	1.3%	0.2% ▼

## Where has our gas come from?\*



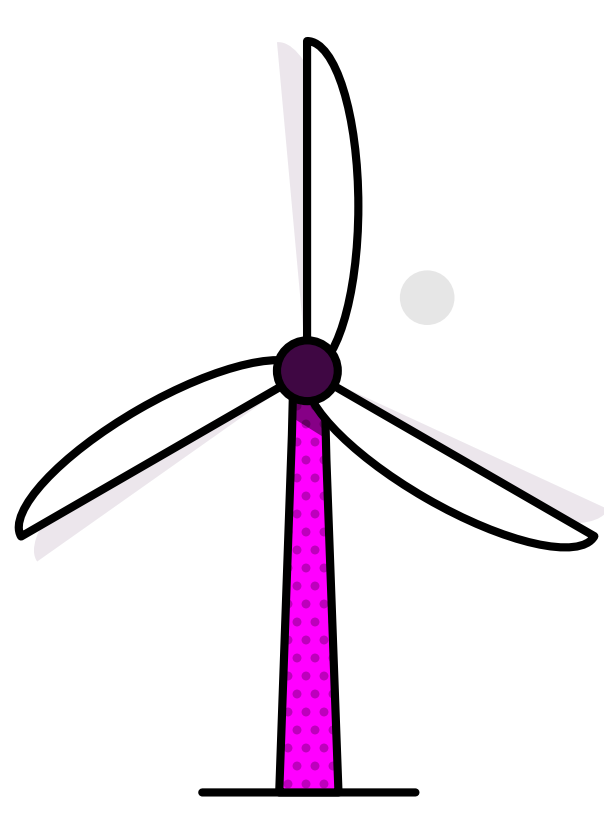
Entry Points		change from previous month
UK/Norwegian gas fields	62%	1% ▲
LNG imports	29%	7% ▲
European imports	2%	2% ▼
Storage withdrawal	7%	6% ▼

## Where is our gas used?

Distribution networks	69%	0% -
Power stations	18%	2% ▼
EU & Ireland exports	7%	0% -
Industrial	1%	1% ▼
Storage	5%	3% ▲

\*Gas data is yet to reconcile. For most up-to-date gas data, visit [data.nationalgas.com](https://data.nationalgas.com)

## Carbon intensity of electricity

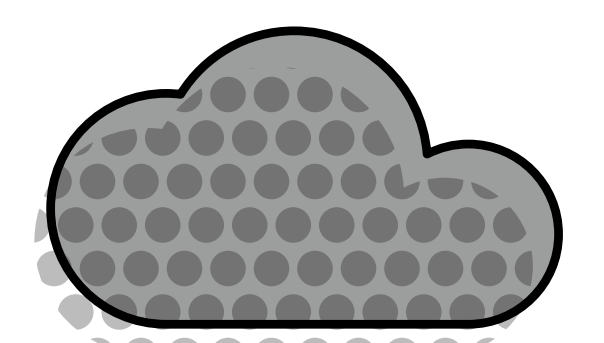


**Zero carbon** 48% of electricity came from zero carbon sources  
78% peak zero carbon share

147 gCO<sub>2</sub>/kWh average

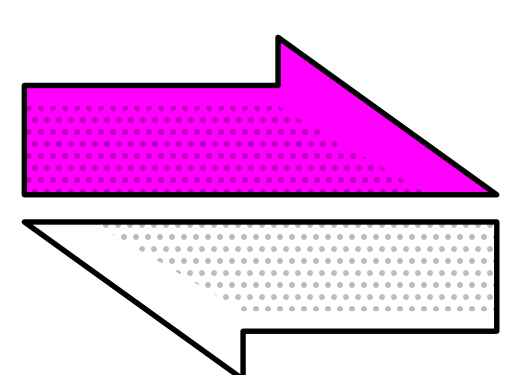
Greenest time of the month 1pm on 24 February

Lowest carbon intensity 43 gCO<sub>2</sub>/kWh



**Carbon intensity**

## How much electricity we used



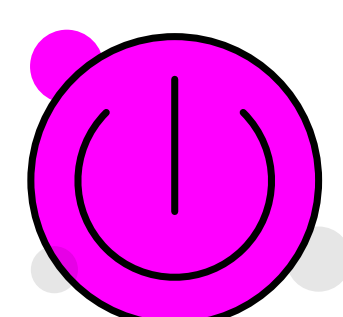
**Imports & exports**



Energy in  
2,927 GWh

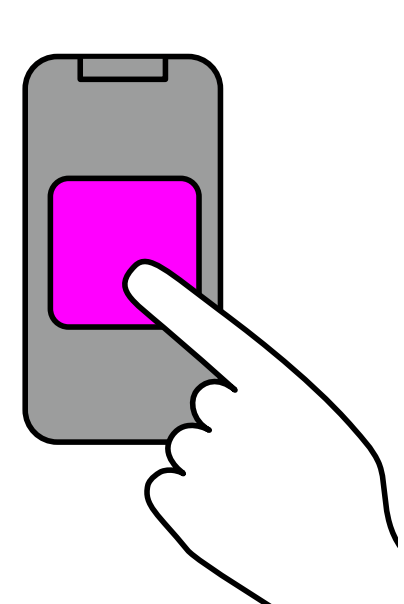
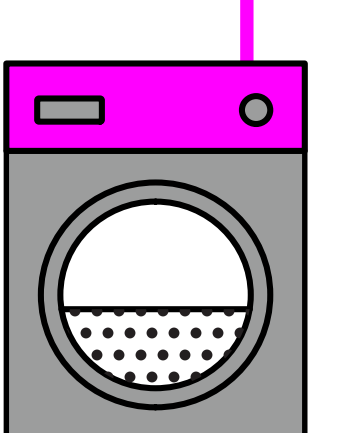


Energy out  
914 GWh



**Demand**

25 TWh run through network (that's 25 billion washing machine cycles).  
Peak demand time was 5:30pm on 13 February.



**View in real-time**

To view our data in real-time, please download the NESO app for Apple or Android. Or visit [carbonintensity.org.uk](https://carbonintensity.org.uk)