

NESO
National Electricity
Transmission
System
Status report

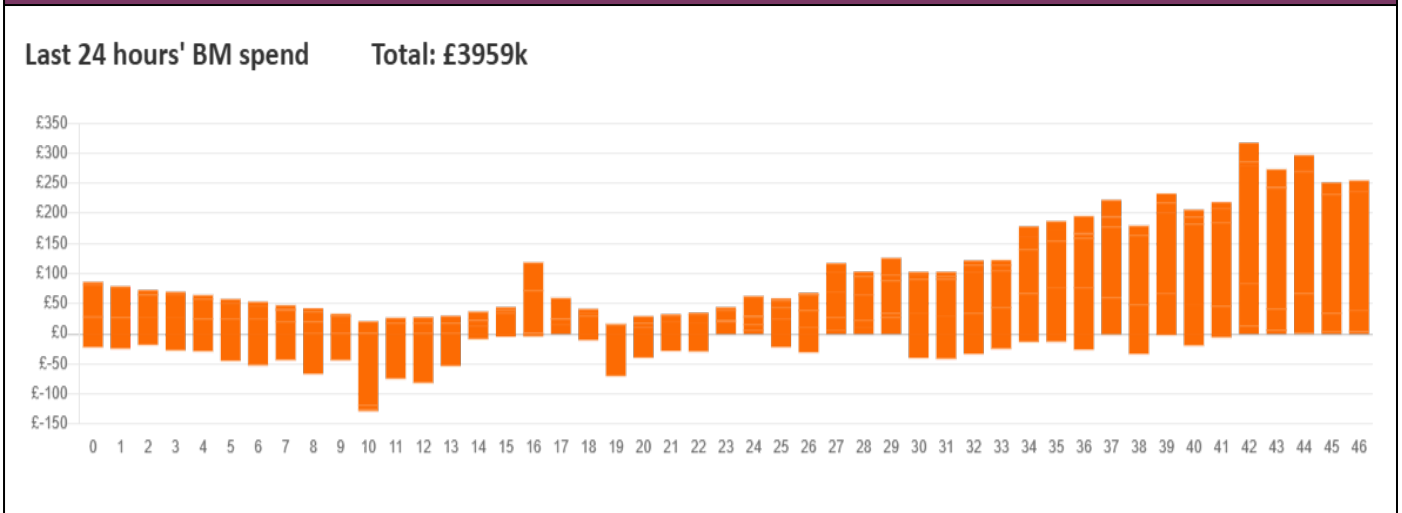


NESO National Electricity Transmission System Status Report
Tuesday 18 February 2025

Today's High Level Risk Status Forecast for the next 24h			
General Status		Voltage	
Demand		System Inertia	
System Margins		Weather	
Generation		Transmission	
Active Constraints			
System Warning			

Today's Minimum De-Rated Margin	15,369 MW (SP 36)	
Current BMU Largest Loss Risk	Generation	1300 MW
	Demand	560 MW

Balancing Costs



Yesterday's Market Summary

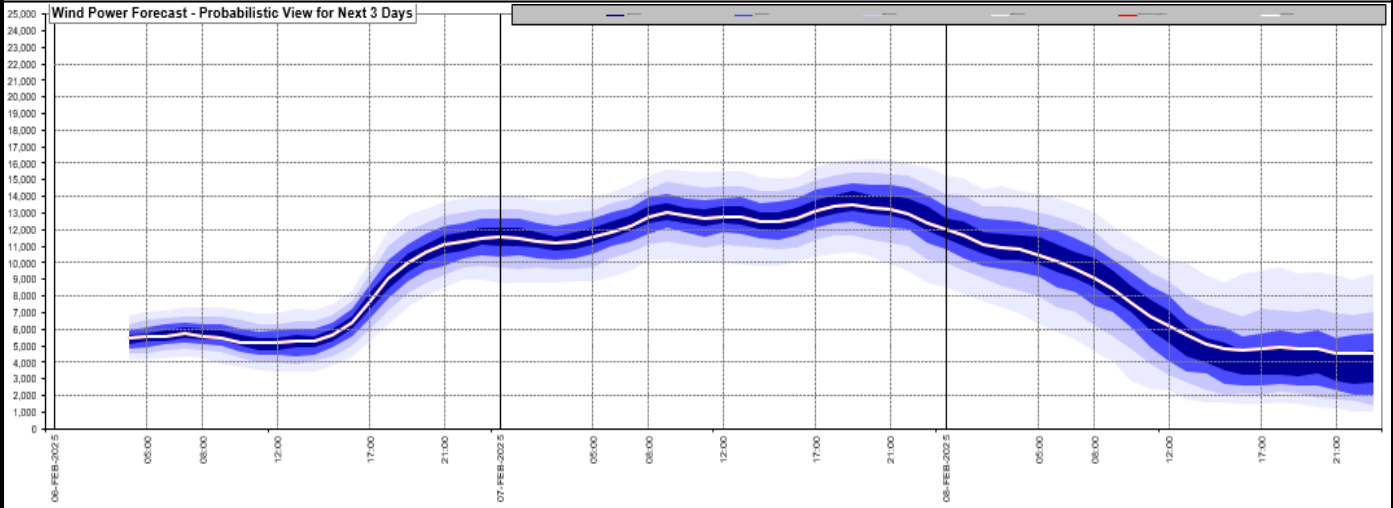
Cash Out Price (Max)	155.00 £/MWh (SP 18)
Cash Out Price (Min)	80 £/MWh (SP 12)
Peak Demand Yesterday	43,200 MW
Minimum Demand	24,646 MW

Interconnector

Net Transfer Capacity (MWs)

Today	Import	Export	Remarks
Netherlands (BritNed)	1000	1000	Fully Available
France (IFA)	2000	2000	Fully Available
Belgium (Nemo)	1000	1000	Fully Available
Ireland (EWIC)	500	500	Fully Available
France (ElecLink)	1000	1000	Fully Available
Northern Ireland (MOYLE)	450	450	Fully Available
Norway (NSL)	1400	1400	Fully Available
France (IFA2)	1000	1000	Fully Available
Viking Link	1400	1400	Fully Available
Ireland (GreenLink)	500	500	Fully Available

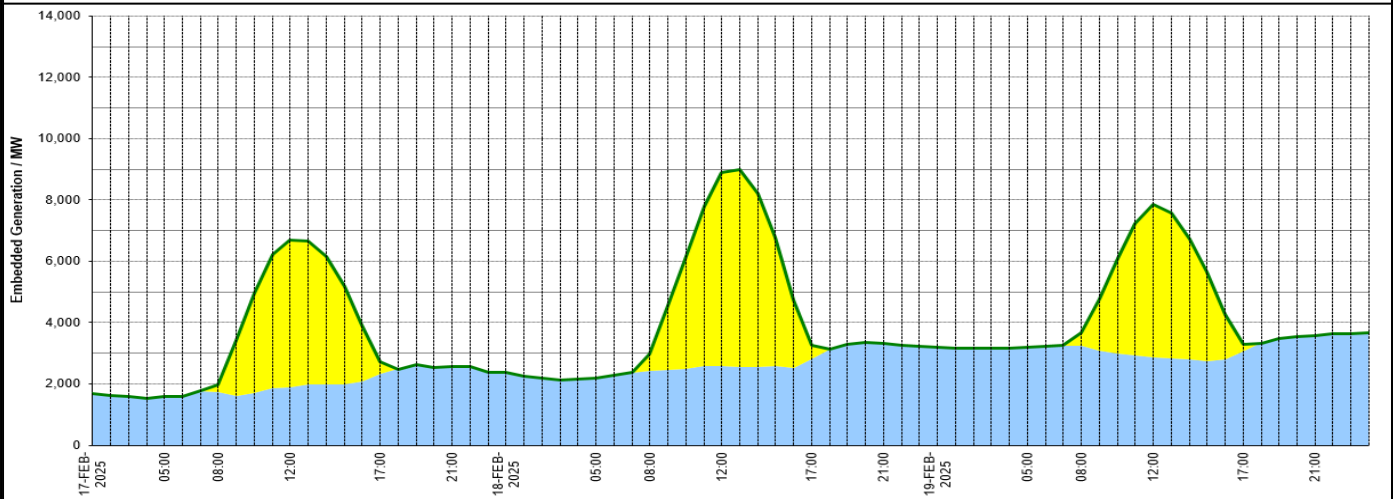
Wind Power Forecast



Expected embedded generation (MWs)

Embedded Generation Forecast

Embedded Generation (non-metered) Estimates												Last run: 18-Feb-2025 02:33:54					
	17-FEB-2025				18-FEB-2025				19-FEB-2025								
	05:00	08:00	12:00	17:00	21:00	00:00	05:00	08:00	12:00	17:00	21:00	00:00	05:00	08:00	12:00	17:00	21:00
Solar (MW)	0	218	4805	405	0	0	0	527	6305	468	0	0	0	434	4975	239	0
Wind (MW)	1577	1747	1897	2330	2558	2366	2203	2438	2575	2803	3312	3194	3194	3240	2866	3061	3587
STOR (MW)	0	0	0	0	0	0	0	0	0	0	0	0	0	0	0	0	0
Total (MW)	1577	1965	6702	2735	2558	2366	2203	2965	8880	3271	3312	3194	3194	3674	7841	3300	3587



Weather	Source	Commentary
Latest forecast (Summary)	Met Office SEPA Natural Resources Wales	<p>Today: Rain and hill snow will clear from Northern Ireland and Scotland into the afternoon. Dry and bright elsewhere, spreading north, with some hazy sunshine at times. A breezy day for many and still feeling cold in the brisk southeasterly breeze.</p> <p>Tonight: A dry night for many and chilly with a patchy frost forming under any prolonged clear spells. Cloud and a band of rain arriving in the southwest by dawn.</p>
General Weather Concerns e.g. wind, rain, snow, flooding, GB Weather Warnings	Met Office Weather Warnings SEPA Natural Resources Wales	<p>UK Weather Warnings Yellow warning of snow and ice Areas affected: Central, Tayside & Fife Grampian SW Scotland, Lothian Borders Strathclyde</p> <p>ACTIVE Started at: 03:00 GMT on Tue 18 February</p>

Weather	Source	Commentary
		<p>Ends: 12:00 GMT on Tue 18 February</p> <p>Snow and freezing rain may make for difficult driving conditions, especially over higher routes.</p> <ul style="list-style-type: none"> - Some roads and railways likely to be affected with longer journey times by road, bus and train services, especially on routes over higher ground. - Probably some icy patches on some untreated roads, pavements and cycle paths - Injuries from slips and falls on icy surfaces are possible <p>Flood Warnings</p> <p>3 flood warnings and 24 flood alerts issued for England.</p> <p>0 flood warnings and 0 flood alerts issued for Scotland.</p> <p>0 flood warnings and 0 flood alerts issued for Wales.</p>

Contains public sector information licensed under the Open Government Licence v1.0

Further Information	
BM Reports	https://www.elexon.co.uk/data/kinnect-insights-solution/
System Balancing Reports	https://www.neso.energy/industry-information/industry-data-and-reports/system-balancing-reports
Forecast Volumes and Costs	https://www.neso.energy/industry-information/industry-data-and-reports/forecast-volumes-and-costs