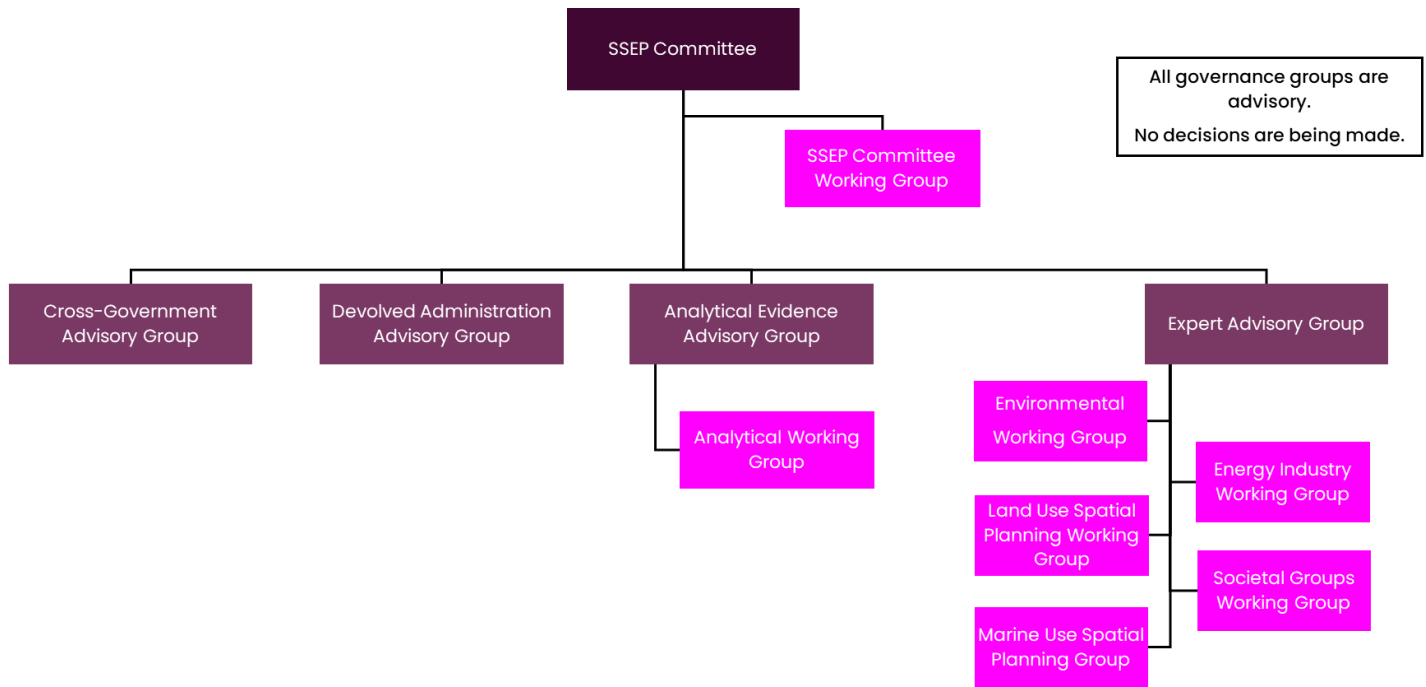


Public

# SSEP External Governance Groups

## Governance Structure



All governance groups are advisory.  
No decisions are being made.

## Terms of Reference

Group	Purpose & Scope	Membership	Frequency & Duration
<b>SSEP Committee</b>	This group is responsible for providing strategic direction and advice on the development and production of the SSEP. It is the highest-level governance group for the SSEP programme.	<ul style="list-style-type: none"> <li>NESO (Chair)</li> <li>DESNZ</li> <li>Ofgem</li> <li>Scottish Government</li> <li>Welsh Government</li> </ul>	Bi-monthly 2 hours
<b>SSEP Committee Working Group (SCWG)</b>	This group is responsible for supporting the SSEP Committee. It seeks to manage risks and actions for the committee, ensuring it interacts effectively with the other governance groups.	<ul style="list-style-type: none"> <li>NESO (Chair)</li> <li>DESNZ</li> <li>Ofgem</li> <li>Scottish Government</li> <li>Welsh Government</li> </ul>	Monthly 1 hour

## Public

<b>Cross-Government Advisory Group (CGAG)</b>	<p>This group provides strategic direction and advice from representatives on wider sectoral demands on land and sea.</p>	<ul style="list-style-type: none"> <li>• DESNZ (Chair)</li> <li>• NESO</li> <li>• Representatives from various UK government departments, including the Wales Office and the Scotland Office.</li> </ul>	<p>Monthly 1.5 hours</p>
<b>Devolved Administration Advisory Group (DAAG)</b>	<p>This group provides strategic direction and advice relevant to devolved issues.</p>	<ul style="list-style-type: none"> <li>• NESO (Chair)</li> <li>• DESNZ</li> <li>• Scottish Government</li> <li>• Welsh Government</li> </ul>	<p>Ad hoc 1 hour</p>
<b>Analytical Evidence Advisory Group (AEAG)</b>	<p>This group delivers oversight and assurance on the modelling process and analytical issues.</p>	<ul style="list-style-type: none"> <li>• NESO (Chair)</li> <li>• DESNZ</li> <li>• Ofgem</li> <li>• Scottish Government</li> <li>• Welsh Government</li> </ul>	<p>Monthly 2 hours</p>
<b>Analytical Working Group (AWG)</b>	<p>This group is responsible for supporting the AEAG. The AWG feeds into the AEAG and discusses the detailed modelling topics underpinning the SSEP methodology.</p>	<ul style="list-style-type: none"> <li>• NESO (Chair)</li> <li>• DESNZ</li> <li>• Ofgem</li> <li>• Scottish Government</li> <li>• Welsh Government</li> </ul>	<p>Every 3 weeks 2 hours</p>
<b>Expert Advisory Group (EAG)</b>	<p>This group provides technical insight and advice on the SSEP, based on engagement with environmental, land, marine, energy industry and societal groups. The EAG will challenge, review and weigh up benefits and opportunities across all categories of expertise.</p>	<ul style="list-style-type: none"> <li>• NESO (Chair)</li> <li>• DESNZ</li> <li>• Ofgem</li> <li>• Scottish Government</li> <li>• Welsh Government</li> <li>• Representatives from each of our stakeholder working groups across environment, land, marine, energy industry and society.</li> </ul>	<p>Bi-monthly 1.5 hours</p>