

NESO
National Electricity
Transmission
System
Status report

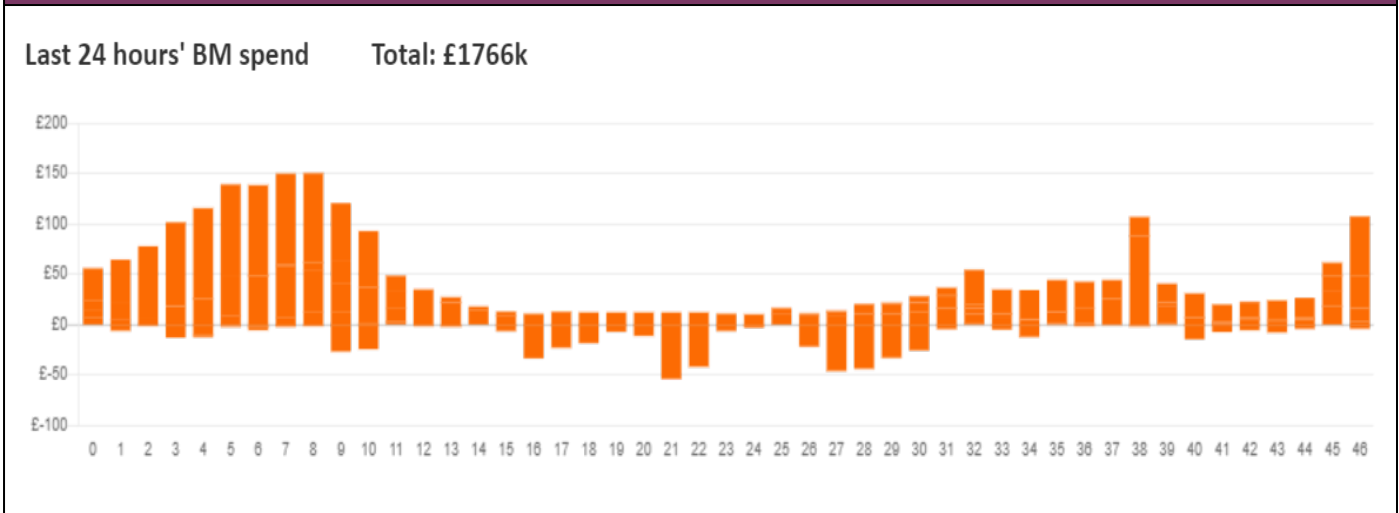


NESO National Electricity Transmission System Status Report
Wednesday 29 January 2025

Today's High Level Risk Status Forecast for the next 24h			
General Status		Voltage	
Demand		System Inertia	
System Margins		Weather	
Generation		Transmission	
Active Constraints			
System Warning			

Today's Minimum De-Rated Margin	11,841 MW (SP 36)	
Current BMU Largest Loss Risk	Generation	1500 MW
	Demand	560MW

Balancing Costs



Yesterday's Market Summary

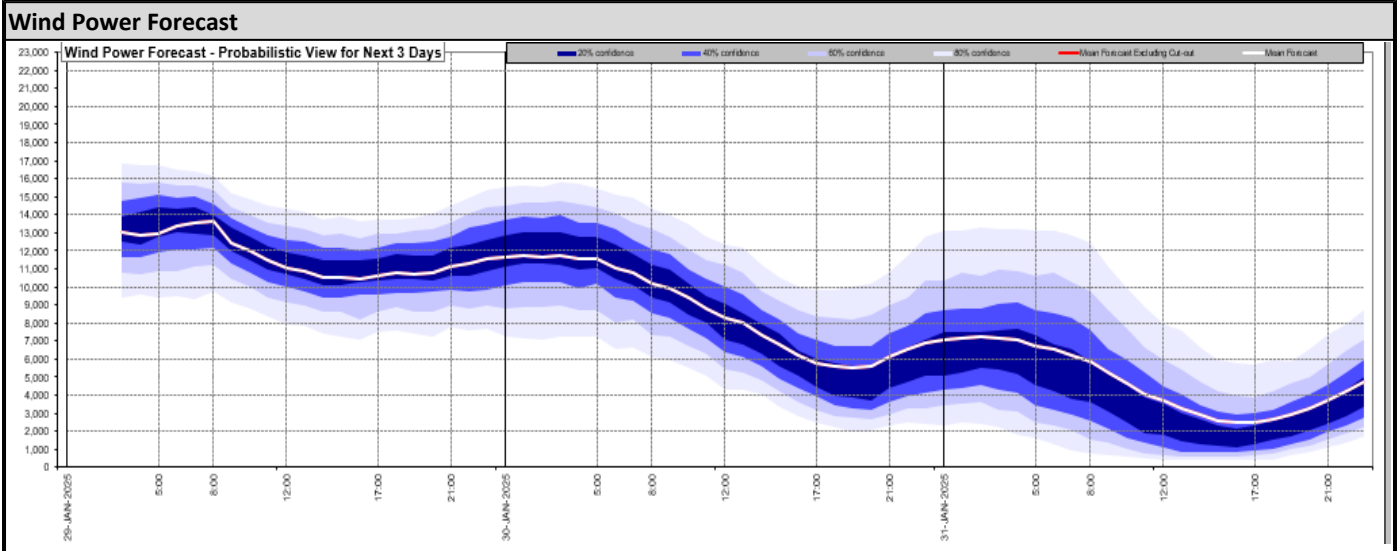
Cash Out Price (Max)	£150 /MWh (SP 15)
Cash Out Price (Min)	£-45 /MWh (SP 8)
Peak Demand Yesterday	40,133 MW
Minimum Demand	23,180MW

Interconnector

Net Transfer Capacity (MWs)

Today	Import	Export	Remarks
Netherlands (BritNed)	1000	1000	Fully Available
France (IFA)	1500	1500	Partially available
Belgium (Nemo)	1000	1000	Fully Available
Ireland (EWIC)	500	500	Fully Available
France (ElecLink)	0	0	Outage
Northern Ireland (MOYLE)	450	450	Fully Available
Norway (NSL)	1400	1400	Fully Available
France (IFA2)	1000	1000	Fully Available
Viking Link	700	700	Partially Available
Ireland (GreenLink)	500	500	The Greenlink Interconnector is expected to

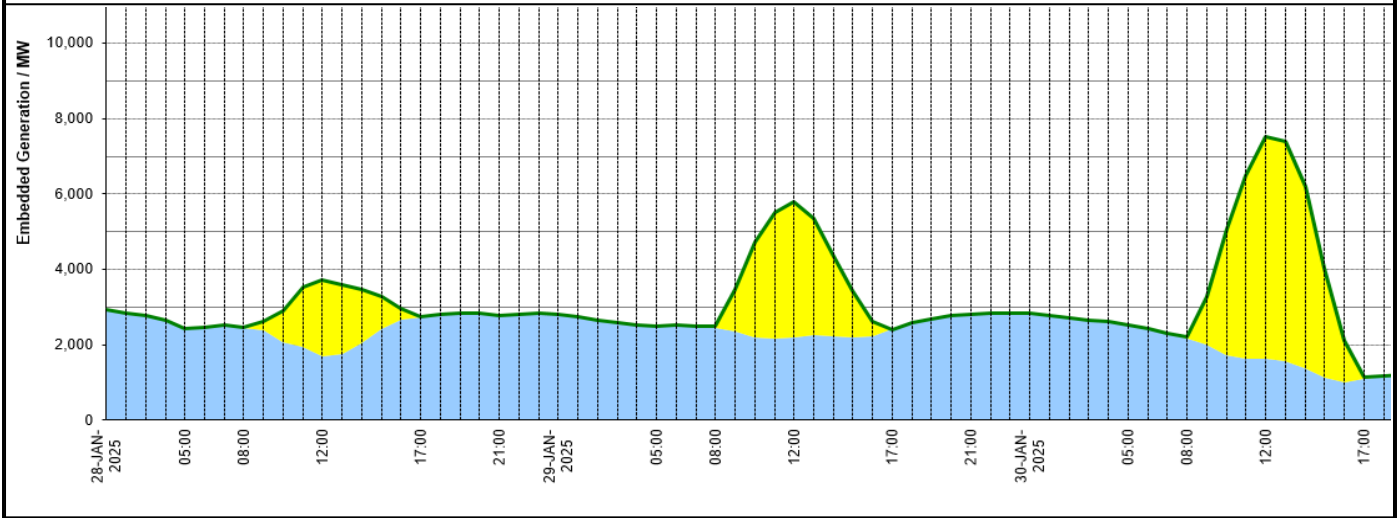
Interconnector Net Transfer Capacity (MWs)			
Today	Import	Export	Remarks
			commence commercial operations by entering the SEM-GB IDA1 auction at 1730 on the 29th January 2025 for trade date 30th January 2025, provided the final testing schedules are successfully completed on Monday the 27th and Tuesday the 28th January. This date is subject to change, with updates provided as necessary.



Expected embedded generation (MWs)

Embedded Generation Forecast

Embedded Generation (non-metered) Estimates															Last run: 29-Jan	
	28-JAN-2025					29-JAN-2025					30-JAN-2025					
	05:00	08:00	12:00	17:00	21:00	00:00	05:00	08:00	12:00	17:00	21:00	00:00	05:00	08:00	12:00	17:00
Solar (MW)	0	0	2021	2	0	0	0	50	3598	0	0	0	0	45	5892	51
Wind (MW)	2440	2460	1703	2741	2766	2819	2495	2438	2183	2414	2820	2832	2523	2175	1634	1095
STOR (MW)	0	0	0	0	0	0	0	0	0	0	0	0	0	0	0	0
Total (MW)	2440	2460	3724	2743	2766	2819	2495	2488	5781	2414	2820	2832	2523	2220	7526	1146



Weather	Source	Commentary
Latest forecast (Summary)	Met Office SEPA Natural Resources Wales	<p>Today: Showers in the north on Wednesday, but dry for many. Cloud thickening across the very far south, with some outbreaks of rain, possibly heavy, affecting the far south coast.</p> <p>Tonight:</p>

Weather	Source	Commentary
		Showers mostly easing overnight, but some heavy downpours possible in northern parts of Scotland and Northern Ireland. Frost and patchy fog developing under any clear skies.
General Weather Concerns e.g. wind, rain, snow, flooding, GB Weather Warnings	Met Office	UK Weather Warnings No Warnings
	Weather Warnings	Flood Warnings 25 flood warnings and 141 flood alerts issued for England.
	SEPA Natural Resources Wales	0 flood warnings and 0 flood alerts issued for Scotland. 0 flood warnings and 9 flood alerts issued for Wales.

Contains public sector information licensed under the Open Government Licence v1.0

Further Information	
BM Reports	https://www.elexon.co.uk/data/kinnect-insights-solution/
System Balancing Reports	https://www.neso.energy/industry-information/industry-data-and-reports/system-balancing-reports
Forecast Volumes and Costs	https://www.neso.energy/industry-information/industry-data-and-reports/forecast-volumes-and-costs