

NESO
National Electricity
Transmission
System
Status report

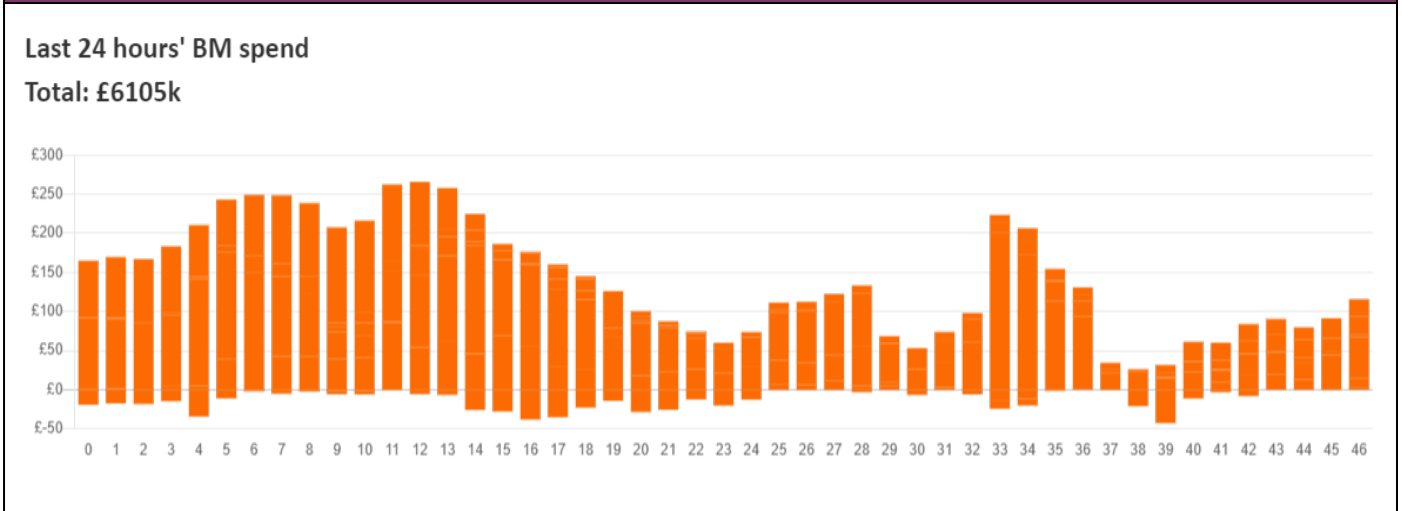


NESO National Electricity Transmission System Status Report
Sunday 26 January 2025

Today's High Level Risk Status Forecast for the next 24h			
General Status		Voltage	
Demand		System Inertia	
System Margins		Weather	
Generation		Transmission	
Active Constraints			
System Warning			

Today's Minimum De-Rated Margin	17,875 MW (SP 34)	
Current BMU Largest Loss Risk	Generation	1500 MW
	Demand	1080MW

Balancing Costs



Yesterday's Market Summary

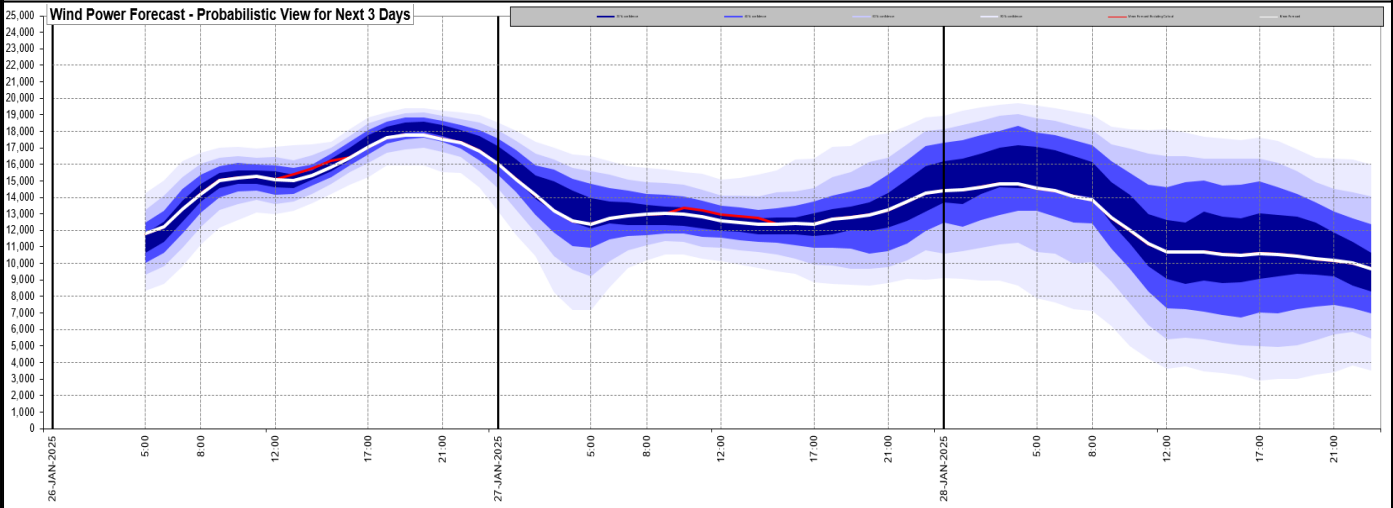
Cash Out Price (Max)	£169.35 /MWh (SP 35,36)
Cash Out Price (Min)	£-37.71 /MWh (SP 11)
Peak Demand Yesterday	39,386 MW
Minimum Demand	21,817 MW

Interconnector

Net Transfer Capacity (MWs)

Today	Import	Export	Remarks
Netherlands (BritNed)	0	0	Unplanned Outage
France (IFA)	1500	1500	Partially available
Belgium (Nemo)	1000	1000	Fully Available
Ireland (EWIC)	500	500	Fully Available
France (ElecLink)	0	0	Outage
Northern Ireland (MOYLE)	450	450	Fully Available
Norway (NSL)	1400	1400	Fully Available
France (IFA2)	1000	1000	Fully Available
Viking Link	700	700	Partially Available
Ireland (GreenLink)	0	0	Not yet commissioned

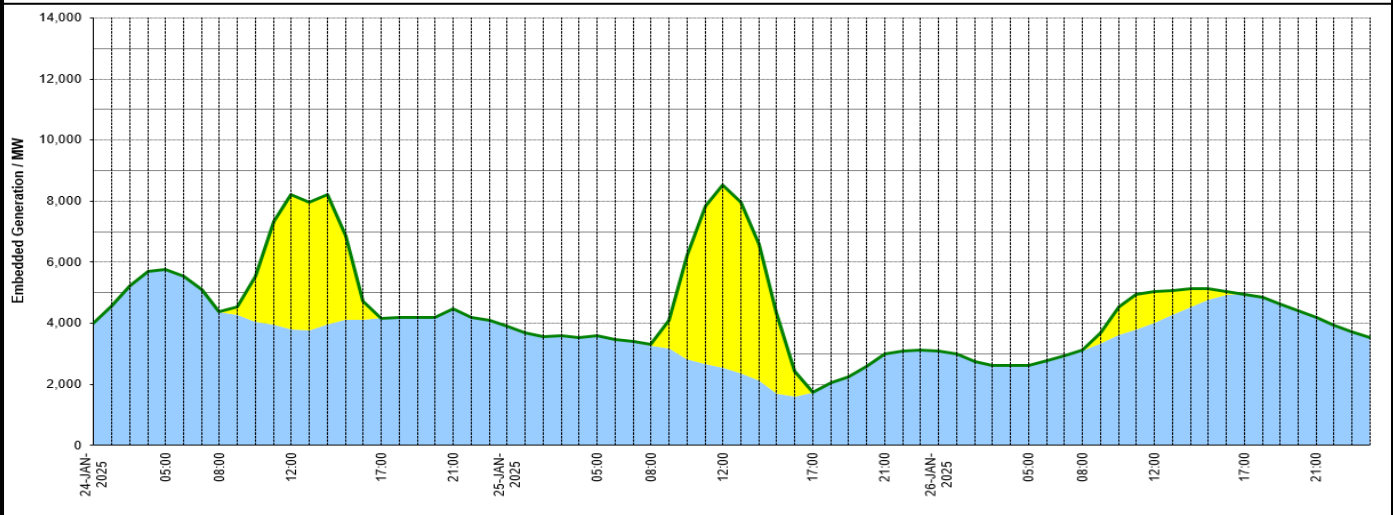
Wind Power Forecast



Expected embedded generation (MW)

Embedded Generation Forecast

Embedded Generation (non-metered) Estimates													Last run: 25-Jan-2025 23:31:47				
	24-JAN-2025					25-JAN-2025					26-JAN-2025						
	05:00	08:00	12:00	17:00	21:00	00:00	05:00	08:00	12:00	17:00	21:00	00:00	05:00	08:00	12:00	17:00	21:00
Solar (MW)	0	0	4403	0	0	0	0	28	5994	2	0	0	0	0	1017	0	0
Wind (MW)	5758	4367	3801	4162	4460	3907	3597	3280	2532	1729	3004	3106	2623	3111	4015	4949	4194
STOR (MW)	0	0	0	0	0	0	0	0	0	0	0	0	0	0	0	0	0
Total (MW)	5758	4367	8204	4162	4460	3907	3597	3308	8526	1731	3004	3106	2623	3111	5032	4949	4194



Weather	Source	Commentary
Latest forecast (Summary)	Met Office SEPA Natural Resources Wales	<p>Today: A fine start for many with some sunny spells as showers across Scotland ease. Rain spreading northeastwards, heavy at times and falling as snow over northern hills later. This accompanied by gales, locally severe on exposed coasts in the southwest.</p> <p>Tonight: Rain and hill snow continuing northwards across Scotland whilst another area of heavy rain moves across central and southern England. Winds briefly easing, but further gales arriving in the south.</p>
General Weather Concerns e.g. wind, rain, snow, flooding, GB Weather Warnings	Met Office Weather Warnings SEPA Natural Resources Wales	<p>UK Weather Warnings Yellow warning of wind Areas affected: Highlands & Eilean Siar Strathclyde</p> <p>ACTIVE Started at: 18:00 GMT on Sat 25 January</p>

Weather	Source	Commentary
		<p>Ends: 06:00 GMT on Sun 26 January</p> <p>Strong and gusty winds potentially leading to some disruption to transport and infrastructure</p> <ul style="list-style-type: none"> - Some delays to road, rail, air and ferry transport are likely - Probably some bus and train services affected, with some journeys taking longer - Delays for high-sided vehicles on exposed routes and bridges likely - Some short term loss of power and other services is possible - It's likely that some coastal routes, sea fronts and coastal communities will be affected by spray and/or large waves <p>Issued at: 09:58 GMT on Sat 25 January</p> <p>Yellow warning of snow and ice Areas affected: Central, Tayside & Fife Grampian Highlands & Eilean Siar Northern Ireland SW Scotland, Lothian Borders Strathclyde</p> <p>ACTIVE Started at: 18:00 GMT on Sat 25 January</p> <p>Ends: 10:00 GMT on Sun 26 January</p> <p>Snow showers and icy patches leading to some travel disruption for this evening and overnight</p> <ul style="list-style-type: none"> - Some roads and railways likely to be affected with longer journey times by road, bus and train services - Some injuries from slips and falls on icy surfaces - Probably some icy patches on some untreated roads, pavements and cycle paths <p>Issued at: 09:54 GMT on Sat 25 January</p> <p>Yellow warning of wind Areas affected: South West England</p> <p>Starts: 06:00 GMT on Sun 26 January</p> <p>Ends: 11:00 GMT on Sun 26 January</p> <p>Strong winds are likely to cause some disruption during Sunday morning.</p> <ul style="list-style-type: none"> - Road, rail, air and ferry services may be affected, with longer journey times and cancellations possible - Some roads and bridges may close - Power cuts may occur, with the potential to affect other services, such as mobile phone coverage - Some damage to buildings, such as tiles blown from roofs, could happen - Injuries and danger to life from flying debris are possible - Injuries and danger to life could occur from large waves and beach material being thrown onto sea fronts, coastal roads and properties <p>Issued at: 21:18 GMT on Sat 25 January</p> <p>Yellow warning of rain Areas affected: East Midlands East of England London & South East England North West England South West England Wales West Midlands</p> <p>Starts: 08:00 GMT on Sun 26 January</p> <p>Ends: 06:00 GMT on Mon 27 January</p> <p>Spells of heavy rain may lead to some local flooding during Sunday and Monday.</p>

Weather	Source	Commentary
		<ul style="list-style-type: none"> - There is a small chance that homes and businesses could be flooded, causing damage to some buildings - There is a small chance of fast flowing or deep floodwater causing danger to life - Where flooding occurs, there is a slight chance of delays or cancellations to train and bus services - Spray and flooding could lead to difficult driving conditions and some road closures - There is a slight chance of power cuts and loss of other services to some homes and businesses <p>Issued at: 10:38 GMT on Thu 23 January</p> <p>Yellow warning of wind Areas affected: London & South East England North West England SW Scotland, Lothian Borders South West England Strathclyde Wales West Midlands</p> <p>Starts: 08:00 GMT on Sun 26 January</p> <p>Ends: 17:00 GMT on Sun 26 January</p> <p>Strong winds are likely to cause some disruption on Sunday.</p> <ul style="list-style-type: none"> - Some delays to road, rail, air and ferry transport are likely - Delays for high-sided vehicles on exposed routes and bridges likely - It's likely that some coastal routes, sea fronts and coastal communities will be affected by spray and/or large waves - Some short term loss of power and other services is possible - Probably some bus and train services affected, with some journeys taking longer <p>Issued at: 10:38 GMT on Thu 23 January</p> <p>Last updated: 7 hours agoLast updated: 7 hours ago</p> <p>Yellow warning of wind Areas affected: Northern Ireland</p> <p>Starts: 10:00 GMT on Sun 26 January</p> <p>Ends: 19:00 GMT on Sun 26 January</p> <p>Strong winds affecting Northern Ireland, potentially disrupting transport and infrastructure</p> <ul style="list-style-type: none"> - Some delays to road, rail, air and ferry transport are likely - Probably some bus and train services affected, with some journeys taking longer - Delays for high-sided vehicles on exposed routes and bridges likely - Some short term loss of power and other services is possible - It's likely that some coastal routes, sea fronts and coastal communities will be affected by spray and/or large waves <p>Issued at: 10:18 GMT on Sat 25 January</p> <p>Yellow warning of rain Areas affected: Wales West Midlands</p> <p>Starts: 06:00 GMT on Mon 27 January</p> <p>Ends: 23:59 GMT on Mon 27 January</p> <p>Heavy rain may bring some disruption and flooding on Monday.</p> <ul style="list-style-type: none"> - Flooding of a few homes and businesses is likely - Bus and train services probably affected with journey times taking longer

Weather	Source	Commentary
		<ul style="list-style-type: none"> - Spray and flooding on roads probably making journey times longer - Some interruption to power supplies and other services likely <p>Issued at: 10:18 GMT on Sat 25 January</p> <p>Yellow warning of wind Areas affected: East of England London & South East England South West England Wales</p> <p>Starts: 06:00 GMT on Mon 27 January</p> <p>Ends: 06:00 GMT on Tue 28 January</p> <p>Strong and gusty winds may bring some disruption.</p> <ul style="list-style-type: none"> - It's likely that some coastal routes, sea fronts and coastal communities will be affected by spray and/or large waves - Some delays to road, rail, air and ferry transport are likely - Delays for high-sided vehicles on exposed routes and bridges likely - Some short term loss of power and other services is possible <p>Issued at: 10:18 GMT on Sat 25 January</p> <p>Flood Warnings</p> <p>1 flood warnings and 30 flood alerts issued for England.</p> <p>0 flood warnings and 0 flood alerts issued for Scotland.</p> <p>0 flood warnings and 0 flood alerts issued for Wales.</p>

Contains public sector information licensed under the Open Government Licence v1.0

Further Information	
BM Reports	https://www.elexon.co.uk/data/kinnect-insights-solution/
System Balancing Reports	https://www.neso.energy/industry-information/industry-data-and-reports/system-balancing-reports
Forecast Volumes and Costs	https://www.neso.energy/industry-information/industry-data-and-reports/forecast-volumes-and-costs