

**NESO**  
**National Electricity**  
**Transmission**  
**System**  
Status report

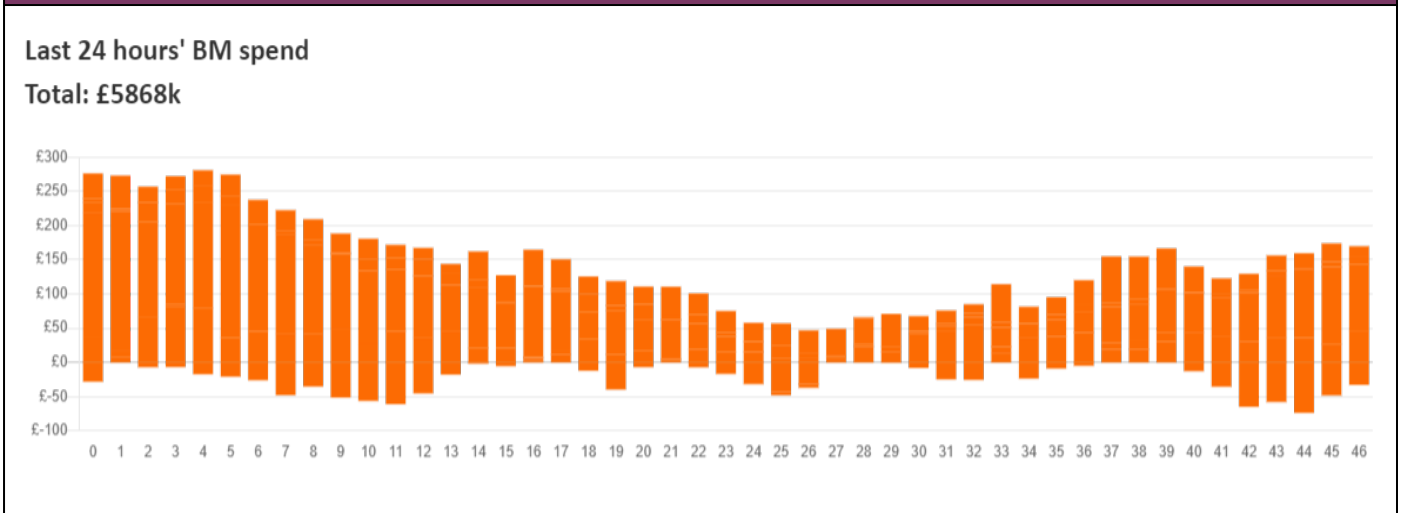


NESO National Electricity Transmission System Status Report  
Wednesday 15 January 2025

Today's High Level Risk Status Forecast for the next 24h			
General Status		Voltage	
Demand		System Inertia	
System Margins		Weather	
Generation		Transmission	
Active Constraints			
<a href="#">System Warning</a>			

<a href="#">Today's Minimum De-Rated Margin</a>	7,001 MW (SP 39)	
Current BMU Largest Loss Risk	Generation	1500 MW
	Demand	1050 MW

Balancing Costs



Yesterday's Market Summary

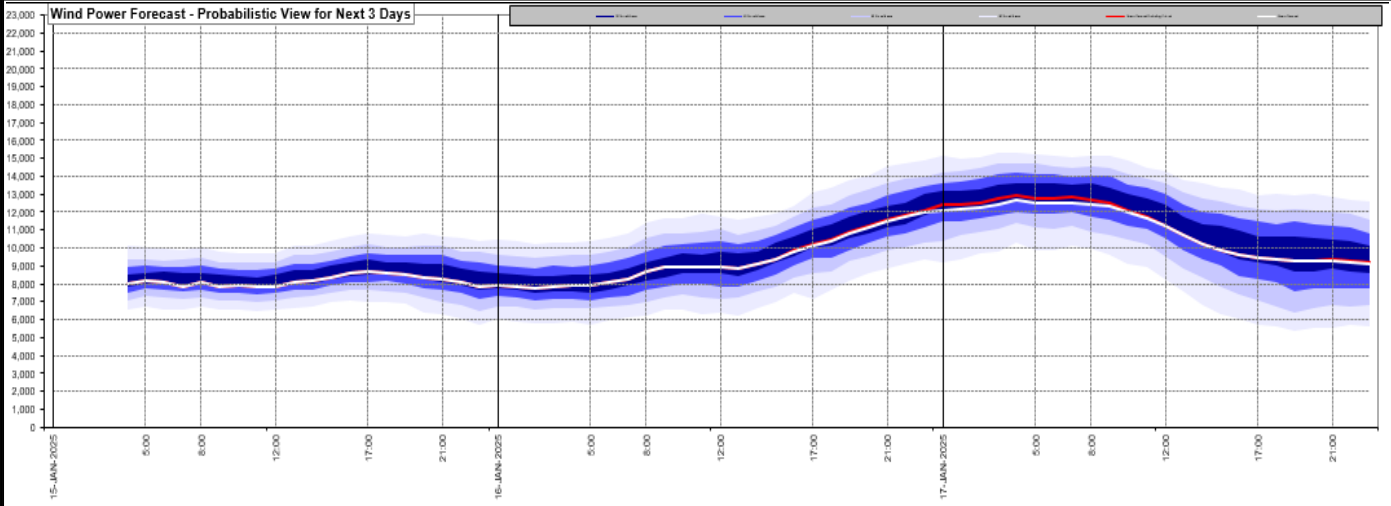
<a href="#">Cash Out Price (Max)</a>	£141.02 /MWh (SP 40)
<a href="#">Cash Out Price (Min)</a>	£50 /MWh (SP 20)
<a href="#">Peak Demand Yesterday</a>	44,246 MW
<a href="#">Minimum Demand</a>	24,149 MW

Interconnector

Net Transfer Capacity (MWs)

Today	Import	Export	Remarks
Netherlands (BritNed)	0	0	Unplanned Outage
France (IFA)	1000	1000	Partially available
Belgium (Nemo)	1000	1000	Fully Available
Ireland (EWIC)	500	500	Fully Available
France (ElecLink)	0	0	Outage
Northern Ireland (MOYLE)	450	450	Fully Available
Norway (NSL)	1400	1400	Fully Available
France (IFA2)	1000	1000	Fully Available
Viking Link	700	700	Partially Available
Ireland (GreenLink)	0	0	Not yet commissioned

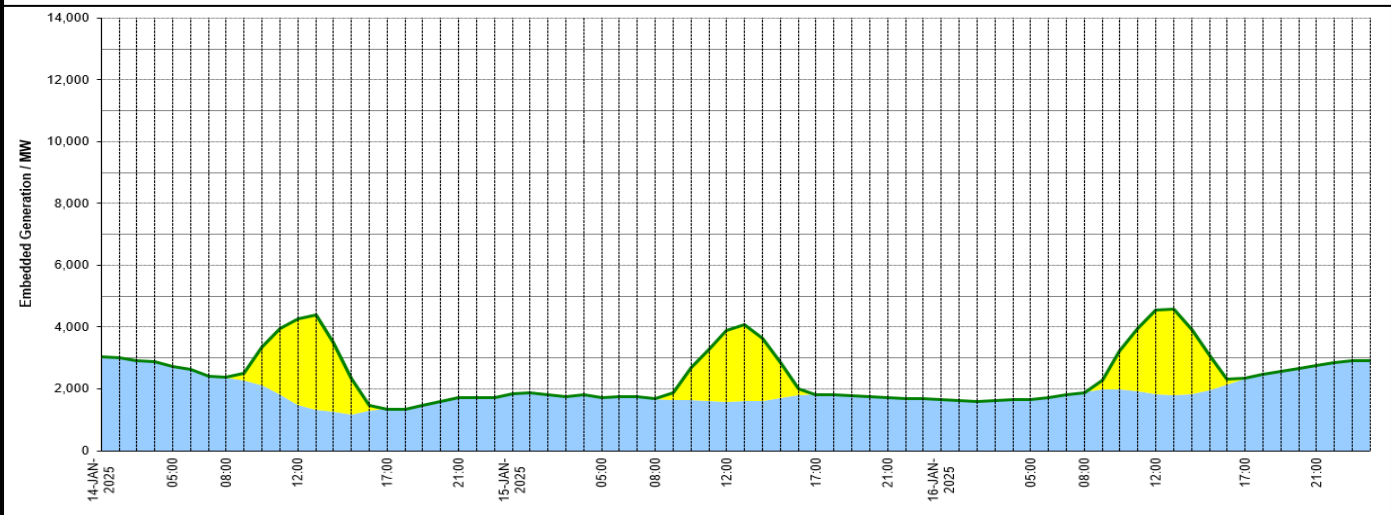
### Wind Power Forecast



### Expected embedded generation (MW)

#### Embedded Generation Forecast

Embedded Generation (non-metered) Estimates													Last run: 15-Jan-2025 04:35:10				
	14-JAN-2025					15-JAN-2025					16-JAN-2025						
	05:00	08:00	12:00	17:00	21:00	00:00	05:00	08:00	12:00	17:00	21:00	00:00	05:00	08:00	12:00	17:00	21:00
Solar (MW)	0	0	2783	0	0	0	0	0	2287	0	0	0	0	0	2724	0	0
Wind (MW)	2719	2367	1489	1348	1733	1839	1724	1678	1588	1818	1719	1661	1657	1887	1835	2340	2753
STOR (MW)	0	0	0	0	0	0	0	0	0	0	0	0	0	0	0	0	0
<b>Total (MW)</b>	<b>2719</b>	<b>2367</b>	<b>4272</b>	<b>1348</b>	<b>1733</b>	<b>1839</b>	<b>1724</b>	<b>1678</b>	<b>3875</b>	<b>1818</b>	<b>1719</b>	<b>1661</b>	<b>1657</b>	<b>1887</b>	<b>4559</b>	<b>2340</b>	<b>2753</b>



Weather	Source	Commentary
Latest forecast (Summary)	<a href="#">Met Office</a> <a href="#">SEPA</a> <a href="#">Natural Resources Wales</a>	<p><b>Today:</b> Rather cloudy at first, and staying grey across central and southeastern England, with hill fog and patchy drizzle, whilst outbreaks of rain arrive across north and northwest Scotland, where it will also be windy. Some sunshine developing elsewhere.</p> <p><b>Tonight:</b> Cloudy, murky and mild in central and southeastern areas. Windy with some rain across northwest Scotland. Dry with clear spells elsewhere, with patchy frost, mist and fog forming.</p>
General Weather Concerns e.g. wind, rain, snow, flooding, GB Weather Warnings	<a href="#">Met Office</a> <a href="#">Weather Warnings</a> <a href="#">SEPA</a> <a href="#">Natural Resources Wales</a>	<p><b>UK Weather Warnings</b> No weather warnings are in force for the UK</p> <p><b>Flood Warnings</b> 2 flood warnings and 31 flood alerts issued for England.</p> <p>0 flood warnings and 0 flood alerts issued for Scotland.</p>

Weather	Source	Commentary
		0 flood warnings and 0 flood alerts issued for Wales.

*Contains public sector information licensed under the Open Government Licence v1.0*

Further Information	
BM Reports	<a href="https://www.elexon.co.uk/data/kinnect-insights-solution/">https://www.elexon.co.uk/data/kinnect-insights-solution/</a>
System Balancing Reports	<a href="https://www.neso.energy/industry-information/industry-data-and-reports/system-balancing-reports">https://www.neso.energy/industry-information/industry-data-and-reports/system-balancing-reports</a>
Forecast Volumes and Costs	<a href="https://www.neso.energy/industry-information/industry-data-and-reports/forecast-volumes-and-costs">https://www.neso.energy/industry-information/industry-data-and-reports/forecast-volumes-and-costs</a>