

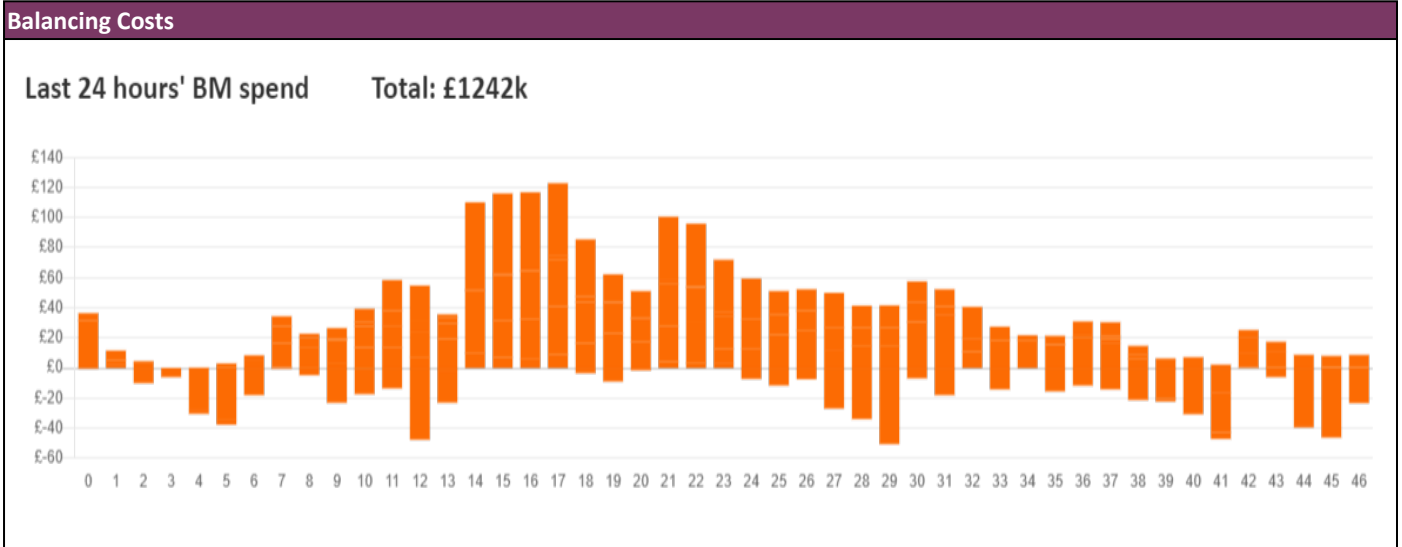
NESO
National Electricity
Transmission
System
Status report



NESO National Electricity Transmission System Status Report
Friday 10 January 2025

Today's High Level Risk Status Forecast for the next 24h			
General Status		Voltage	
Demand		System Inertia	
System Margins		Weather	
Generation		Transmission	
Active Constraints			
System Warning			

Today's Minimum De-Rated Margin	4,993 MW (SP 27)	
Current BMU Largest Loss Risk	Generation	1500 MW
	Demand	560 MW



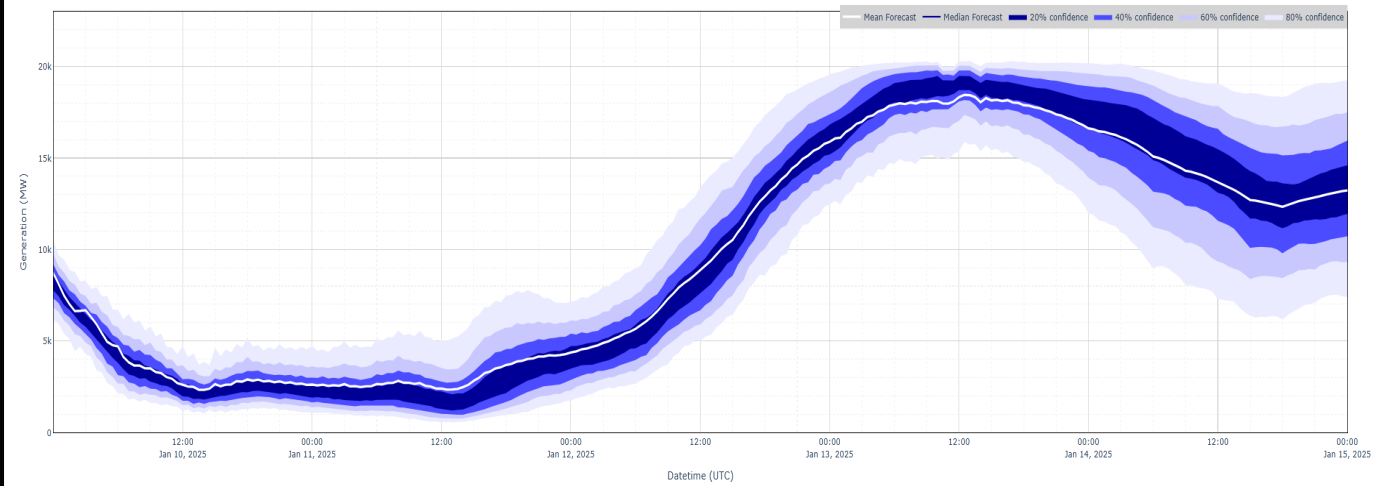
Yesterday's Market Summary

Cash Out Price (Max)	£151.00 /MWh (SP 1)
Cash Out Price (Min)	£24.41 /MWh (SP 43)
Peak Demand Yesterday	45,850 MW
Minimum Demand	27,920 MW

Interconnector Net Transfer Capacity (MWs)

Today	Import	Export	Remarks
Netherlands (BritNed)	0	0	Unplanned Outage
France (IFA)	1500	1500	Partially Available - Pole 2 Outage
Belgium (Nemo)	1000	1000	Fully Available
Ireland (EWIC)	500	500	Fully Available
France (ElecLink)	0	0	Outage
Northern Ireland (MOYLE)	450	450	Fully Available
Norway (NSL)	1400	1400	Fully Available
France (IFA2)	1000	1000	Fully Available
Viking Link	700	700	Partially Available
Ireland (GreenLink)	0	0	Not yet commissioned

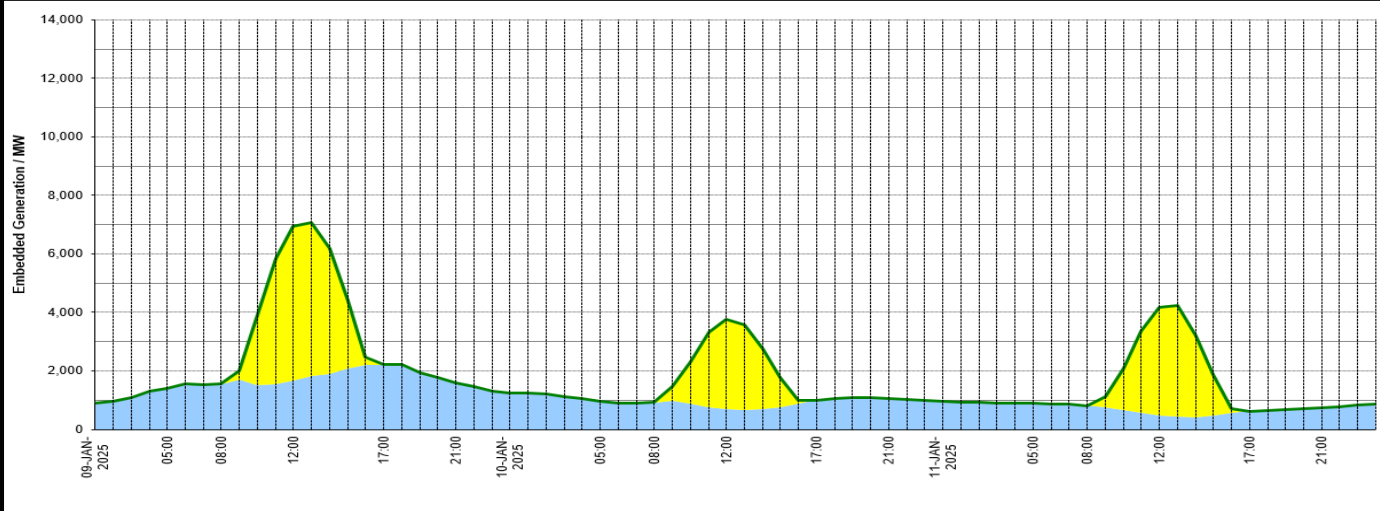
Wind Power Forecast



Expected embedded generation (MWs)

Embedded Generation Forecast

	09-JAN-2025					10-JAN-2025					11-JAN-2025						
	05:00	08:00	12:00	17:00	21:00	00:00	05:00	08:00	12:00	17:00	21:00	00:00	05:00	08:00	12:00	17:00	21:00
Solar (MW)	0	0	5279	0	0	0	0	0	3055	0	0	0	0	0	3714	0	0
Wind (MW)	1394	1557	1668	2221	1593	1245	964	925	699	998	1058	948	888	819	473	617	752
STOR (MW)	0	0	0	0	0	0	0	0	0	0	0	0	0	0	0	0	0
Total (MW)	1394	1557	6947	2221	1593	1245	964	925	3754	998	1058	948	888	819	4187	617	752



Weather	Source	Commentary
Latest forecast (Summary)	Met Office SEPA Natural Resources Wales	<p>Today: A cold start to Friday with frost and patchy freezing fog. Sunny spells and the odd wintry shower in the north and east. Rain, sleet and some hill snow move into the southwest, leading to some icy stretches.</p> <p>Tonight: Cloud and patchy rain or hill snow remains in the southwest. Dry with light winds and clear spells elsewhere allowing frost and freezing fog to form. Cold again for most.</p>
General Weather Concerns e.g. wind, rain, snow, flooding, GB Weather Warnings	Met Office Weather Warnings SEPA Natural Resources Wales	<p>UK Weather Warnings Yellow warning of snow and ice Areas affected: Grampian Highlands & Eilean Siar Orkney & Shetland</p> <p>ACTIVE Started at: 12:00 GMT on Wed 8 January Ends: 10:00 GMT on Fri 10 January</p> <p>Snow showers and ice leading to further travel disruption</p>

Weather	Source	Commentary
		<p>- Some roads and railways affected with longer journey times by road, bus and train services</p> <p>- Some injuries from slips and falls on icy surfaces</p> <p>- Icy patches on some untreated roads, pavements and cycle paths</p> <p>Issued at: 09:41 GMT on Wed 8 January</p> <p>Last updated: 18 hours agoLast updated: 18 hours ago</p> <p>Yellow warning of ice Areas affected: East Midlands East of England North East England SW Scotland, Lothian Borders Yorkshire & Humber</p> <p>ACTIVE Started at: 16:00 GMT on Thu 9 January</p> <p>Ends: 10:00 GMT on Fri 10 January</p> <p>Scattered wintry showers may lead to some icy patches</p> <p>- Probably some icy patches on some untreated roads, pavements and cycle paths</p> <p>- Some injuries from slips and falls on icy surfaces</p> <p>Issued at: 10:58 GMT on Thu 9 January</p> <p>Yellow warning of ice Areas affected: East Midlands North West England Northern Ireland Wales West Midlands</p> <p>ACTIVE Started at: 16:00 GMT on Thu 9 January</p> <p>Ends: 10:00 GMT on Fri 10 January</p> <p>Scattered wintry showers may lead to some icy patches and travel disruption.</p> <p>- Probably some icy patches on some untreated roads, pavements and cycle paths</p> <p>- Some injuries from slips and falls on icy surfaces</p> <p>Issued at: 10:57 GMT on Thu 9 January</p> <p>Yellow warning of ice Areas affected: South West England Wales</p> <p>ACTIVE Started at: 03:00 GMT on Fri 10 January</p> <p>Ends: 11:00 GMT on Fri 10 January</p> <p>Patchy rain and hill snow may lead to some ice for a time on Friday morning</p> <p>- Some injuries from slips and falls on icy surfaces</p> <p>- Probably some icy patches on some untreated roads, pavements and cycle paths</p> <p>Issued at: 10:58 GMT on Thu 9 January.</p> <hr/> <p>Flood Warnings 41 flood warnings and 82 flood alerts issued for England.</p> <p>0 flood warnings and 0 flood alerts issued for Scotland.</p> <p>0 flood warnings and 0 flood alerts issued for Wales.</p>

Further Information	
BM Reports	https://www.elexon.co.uk/data/kinnect-insights-solution/
System Balancing Reports	https://www.neso.energy/industry-information/industry-data-and-reports/system-balancing-reports
Forecast Volumes and Costs	https://www.neso.energy/industry-information/industry-data-and-reports/forecast-volumes-and-costs