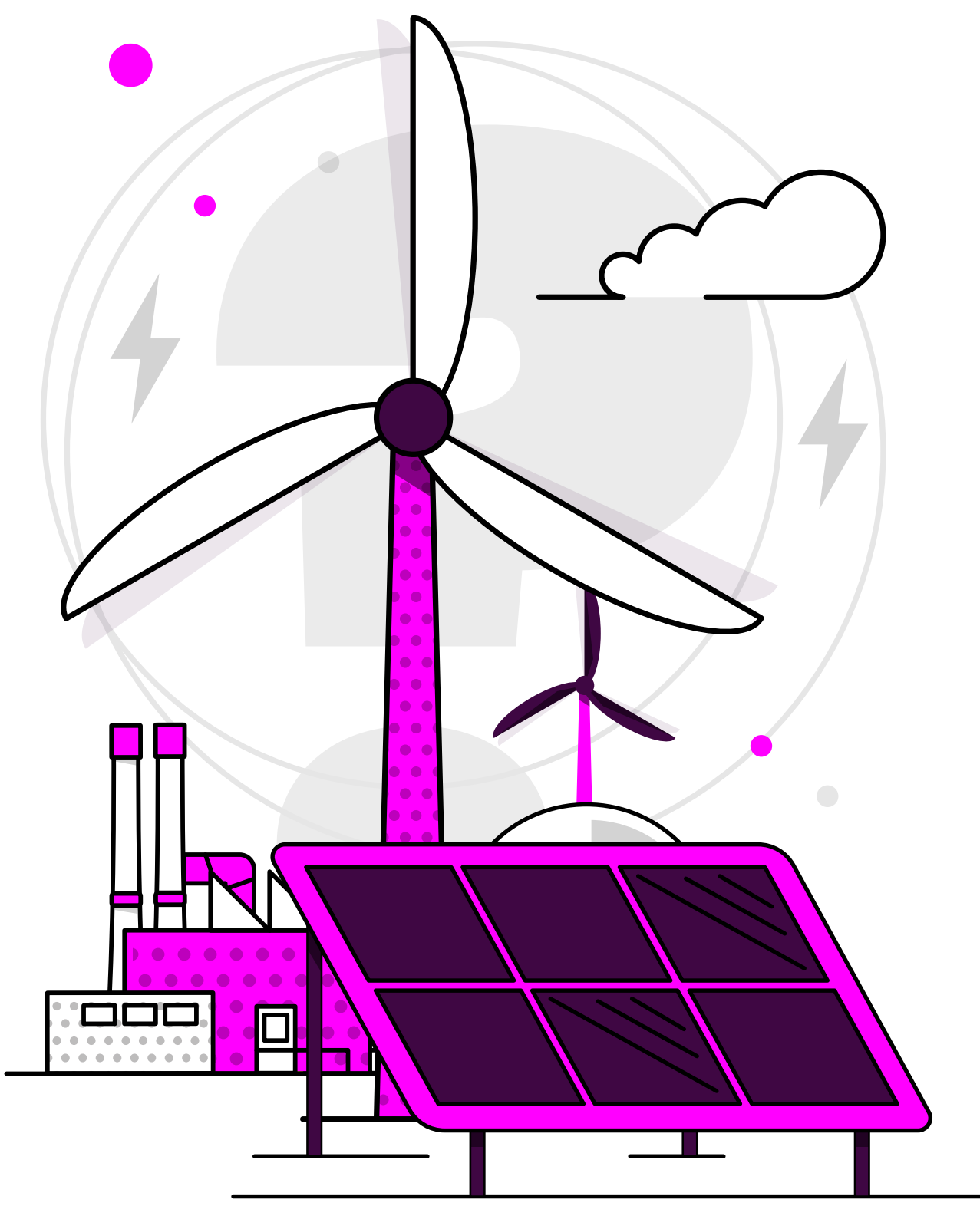


# Britain's Energy Explained: December 2024

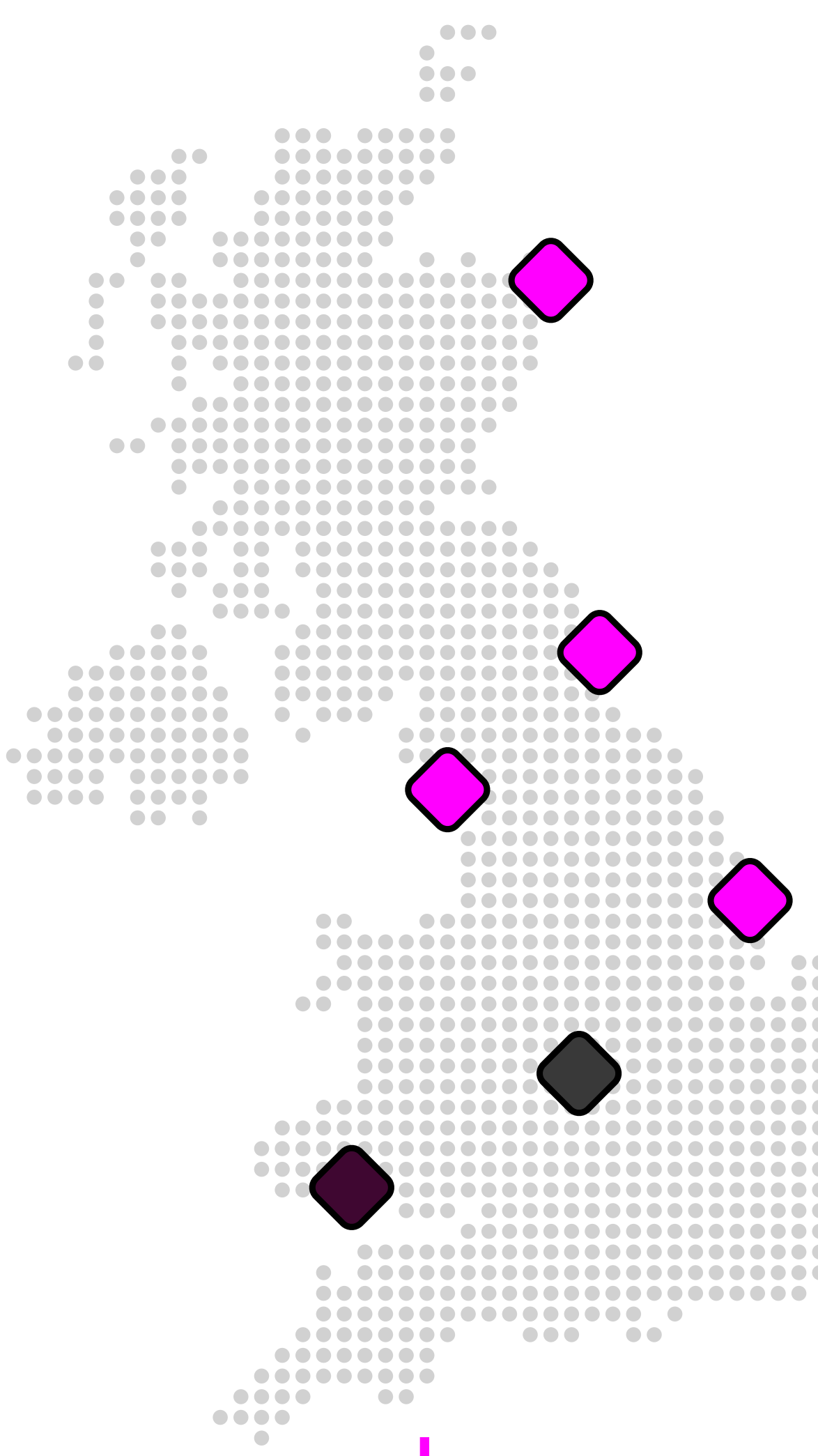


## How was our electricity generated?



| Source  | Percentage | Change from previous month |
|---------|------------|----------------------------|
| Gas     | 28.9%      | 9.4% ▾                     |
| Wind    | 38.9%      | 12.3% ▴                    |
| Nuclear | 11.8%      | 0.4% ▾                     |
| Biomass | 5.7%       | 1.6% ▾                     |
| Coal    | 0%         | 0% -                       |
| Solar   | 0.9%       | 0.7% ▾                     |
| Imports | 9.5%       | 1.8% ▾                     |
| Hydro   | 2.9%       | 1.4% ▴                     |
| Storage | 1.4%       | 0.2% ▴                     |

## Where has our gas come from?\*



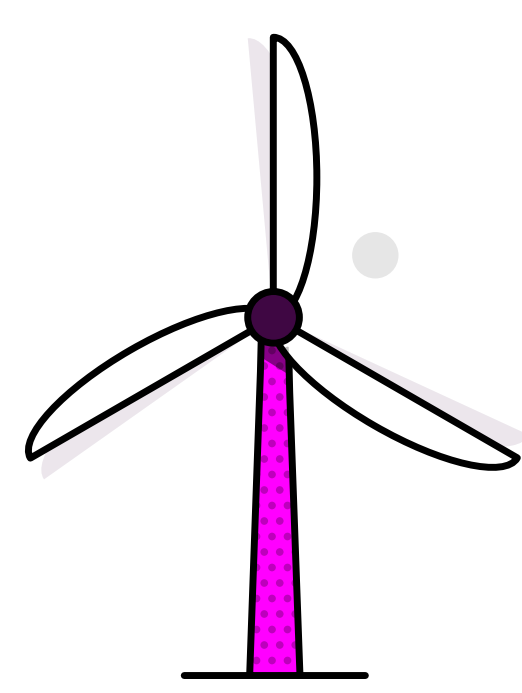
| Entry Points            | Percentage | Change from previous month |
|-------------------------|------------|----------------------------|
| UK/Norwegian gas fields | 68%        | 5% ▾                       |
| LNG imports             | 23%        | 5% ▴                       |
| European imports        | 0%         | 1% ▾                       |
| Storage withdrawal      | 9%         | 1% ▴                       |

## Where is our gas used?

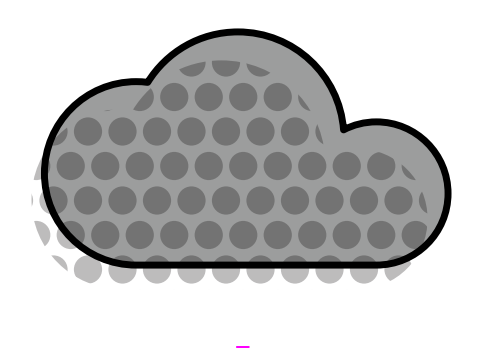
| Usage Category        | Percentage | Change from previous month |
|-----------------------|------------|----------------------------|
| Distribution networks | 68%        | 4% ▴                       |
| Power stations        | 16%        | 6% ▾                       |
| EU & Ireland exports  | 8%         | 0% -                       |
| Industrial            | 2%         | 0% -                       |
| Storage               | 6%         | 2% ▴                       |

\*Gas data is yet to reconcile. For most up-to-date gas data, visit [data.nationalgas.com](https://data.nationalgas.com)

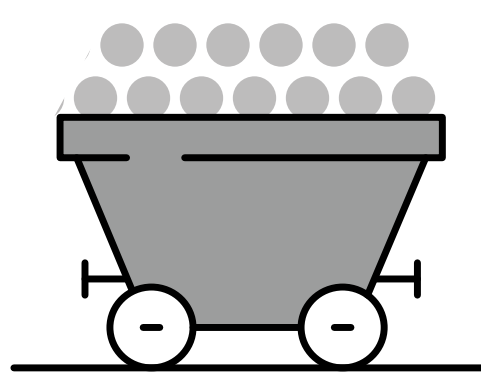
## Carbon intensity of electricity



**Zero carbon** 56% of electricity came from zero carbon sources  
89% peak zero carbon share

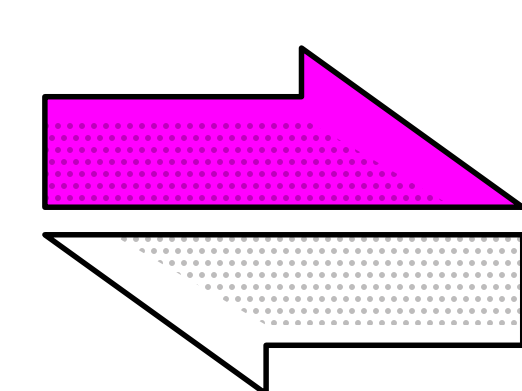


**Carbon intensity** 126 gCO<sub>2</sub>/kWh average  
Greenest time of the month 12:30am on 23 December



**Coal** 0% use this month  
This time 5 years ago coal usage was 3.7%  
745 consecutive coal free hours

## How much electricity we used



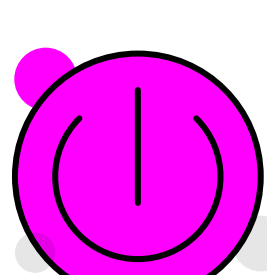
**Imports & exports**



Energy in  
3002 GWh

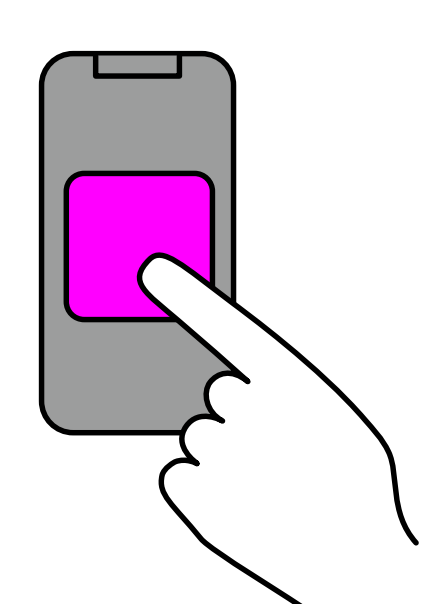
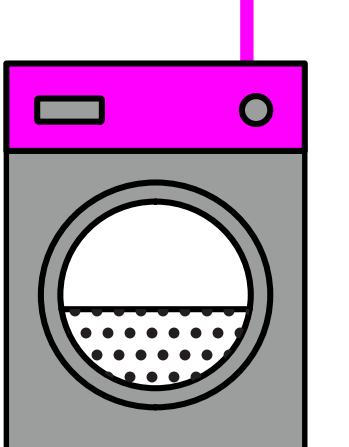


Energy out  
963 GWh



**Demand**

25 TWh run through network (that's 25 billion washing machine cycles).  
Peak demand time was 5pm on 11 December.



**View in real-time**

To view our data in real-time, please download the NESO app for Apple or Android. Or visit [carbonintensity.org.uk](https://carbonintensity.org.uk)