

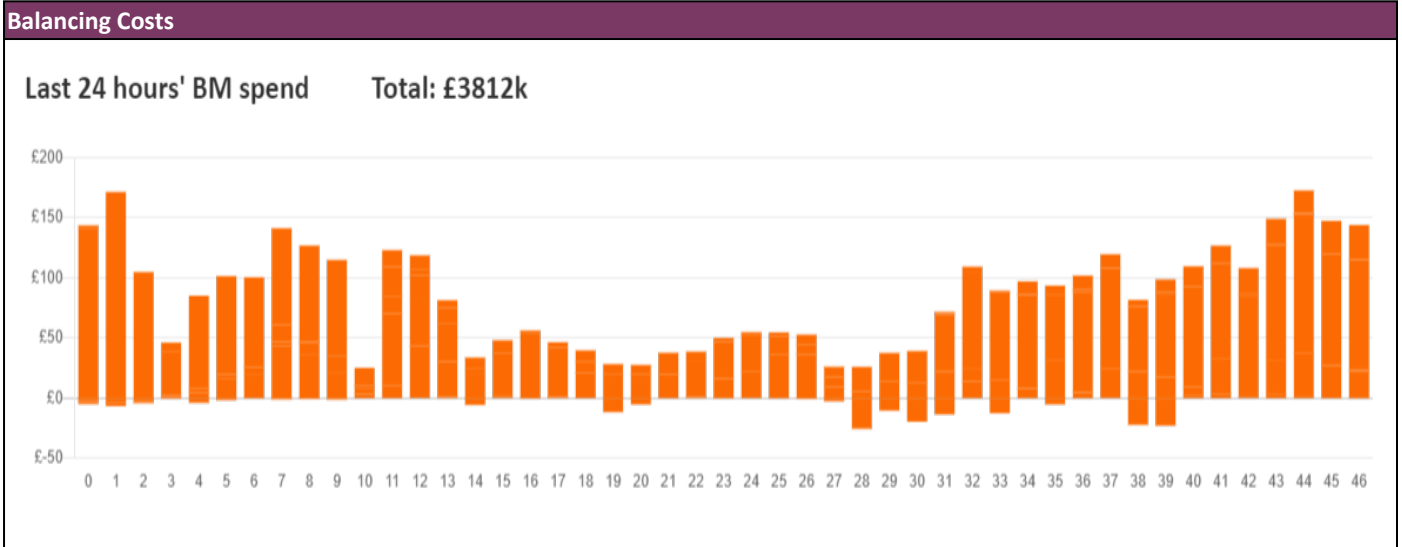
NESO
National Electricity
Transmission
System
Status report



NESO National Electricity Transmission System Status Report
Tuesday 07 January 2025

Today's High Level Risk Status Forecast for the next 24h			
General Status		Voltage	
Demand		System Inertia	
System Margins		Weather	
Generation		Transmission	
Active Constraints			
System Warning			

Today's Minimum De-Rated Margin	11,856 MW (SP 37)	
Current BMU Largest Loss Risk	Generation	1500 MW
	Demand	560 MW



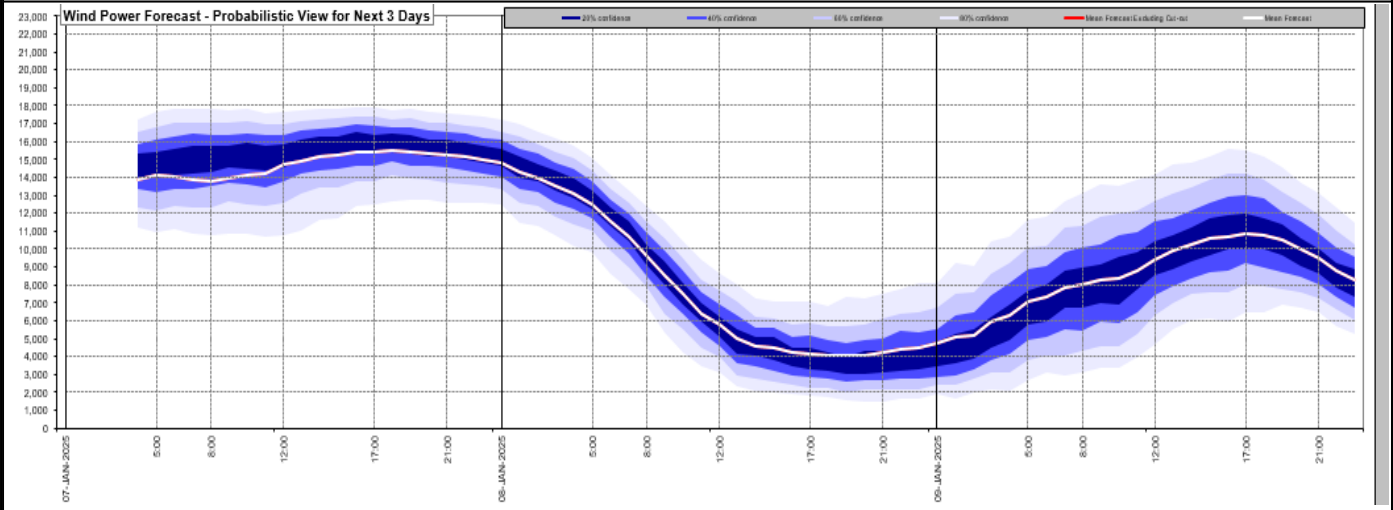
Yesterday's Market Summary

Cash Out Price (Max)	139 £/MWh (SP 3,4)
Cash Out Price (Min)	25.63 £/MWh (SP 7,9)
Peak Demand Yesterday	44,153 MW
Minimum Demand	25.190 MW

Interconnector Net Transfer Capacity (MWs)

Today	Import	Export	Remarks
Netherlands (BritNed)	0	0	Unplanned Outage
France (IFA)	1500	1500	Partially Available
Belgium (Nemo)	1000	1000	Fully Available
Ireland (EWIC)	500	500	Fully Available
France (ElecLink)	0	0	Outage
Northern Ireland (MOYLE)	450	450	Fully Available
Norway (NSL)	1400	1400	Fully Available
France (IFA2)	1000	1000	Fully Available
Viking Link	700	700	Partially Available - Pole outage
Ireland (GreenLink)	0	0	Not yet commissioned

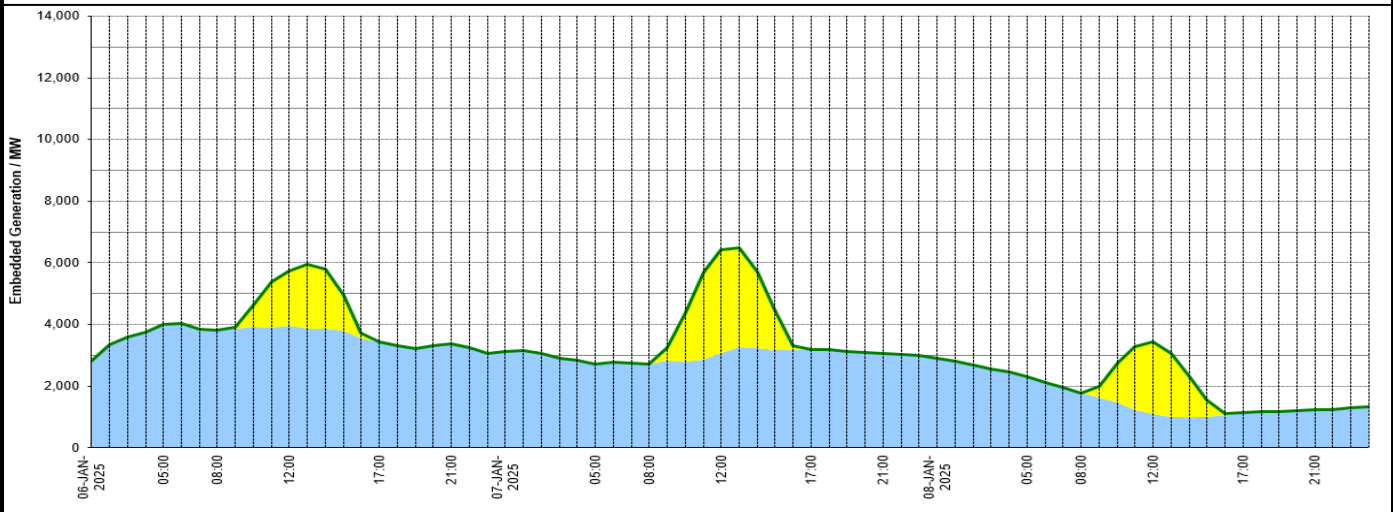
Wind Power Forecast



Expected embedded generation (MWs)

Embedded Generation Forecast

	06-JAN-2025					07-JAN-2025					08-JAN-2025						
	05:00	08:00	12:00	17:00	21:00	00:00	05:00	08:00	12:00	17:00	21:00	00:00	05:00	08:00	12:00	17:00	21:00
Solar (MW)	0	0	1779	0	0	0	0	0	3320	0	0	0	0	0	2353	0	0
Wind (MW)	3996	3814	3947	3431	3376	3129	2707	2720	3090	3196	3074	2901	2306	1785	1092	1129	1234
STOR (MW)	0	0	0	0	0	0	0	0	0	0	0	0	0	0	0	0	0
Total (MW)	3996	3814	5726	3431	3376	3129	2707	2720	6410	3196	3074	2901	2306	1785	3445	1129	1234



Weather	Source	Commentary
Latest forecast (Summary)	Met Office SEPA Natural Resources Wales	<p>Today: A cold, icy morning with wintry showers across the country. Staying cold and breezy for many, with further sleet and snow showers, these mainly in the north and west. Plenty of sunshine in between. Feeling cold in the brisk wind.</p> <p>Tonight: Wintry showers will continue in the north through the evening and overnight. Most places will be dry, with lengthy clear skies and some freezing fog patches. A widespread severe frost.</p>
General Weather Concerns e.g. wind, rain, snow, flooding, GB Weather Warnings	Met Office Weather Warnings SEPA Natural Resources Wales	<p>UK Weather Warnings Yellow warning of snow and ice Areas affected: Northern Ireland</p> <p>ACTIVE Started at: 15:00 GMT on Mon 6 January Ends: 11:00 GMT on Tue 7 January Snow and icy patches may lead to some disruption to travel.</p> <ul style="list-style-type: none"> - Some roads and railways likely to be affected with longer journey times by road, bus and train services - Some injuries from slips and falls on icy surfaces

Weather	Source	Commentary
		<p>- Probably some icy patches on some untreated roads, pavements and cycle paths</p> <p>Issued at: 11:02 GMT on Mon 6 January Yellow warning of snow and ice Areas affected: Grampian Highlands & Eilean Siar Orkney & Shetland SW Scotland, Lothian Borders Strathclyde</p> <p>ACTIVE Started at: 16:00 GMT on Mon 6 January Ends: 12:00 GMT on Tue 7 January Further wintry showers may lead to some travel disruption.</p> <p>- Some roads and railways likely to be affected with longer journey times by road, bus and train services - Some injuries from slips and falls on icy surfaces - Probably some icy patches on some untreated roads, pavements and cycle paths</p> <p>Issued at: 11:03 GMT on Mon 6 January</p> <p>Yellow warning of snow and ice Areas affected: East Midlands London & South East England North West England South West England Wales West Midlands Yorkshire & Humber</p> <p>ACTIVE Started at: 17:00 GMT on Mon 6 January Ends: 10:00 GMT on Tue 7 January Icy stretches and sleet/snow showers developing overnight, bringing some disruption, especially to travel.</p> <p>- Some injuries from slips and falls on icy surfaces - Probably some icy patches on some untreated roads, pavements and cycle paths - Some roads and railways likely to be affected with longer journey times by road, bus and train services</p> <p>Issued at: 10:14 GMT on Mon 6 January Last updated: 3 hours ago Last updated: 3 hours ago</p> <p>Yellow warning of snow Areas affected: East of England London & South East England South West England</p> <p>Starts: 09:00 GMT on Wed 8 January Ends: 23:59 GMT on Wed 8 January A weather system may push snow into some southern counties of England on Wednesday, which could then prove disruptive.</p> <p>- There is a small chance of travel delays on roads with some stranded vehicles and passengers, along with delayed or cancelled rail and air travel - There is a slight chance that some rural communities could become cut off, most likely in upland areas - There is a small chance that power cuts will occur and other services, such as mobile phone coverage, may be affected</p> <p>Issued at: 10:20 GMT on Mon 6 January.</p>
		<p>Flood Warnings 1 severe flood warning 198 flood warnings and 300 flood alerts issued for England.</p> <p>0 flood warnings and 0 flood alerts issued for Scotland.</p> <p>0 flood warnings and 15 flood alerts issued for Wales.</p>

Contains public sector information licensed under the Open Government Licence v1.0

Further Information	
BM Reports	https://www.elexon.co.uk/data/kinnect-insights-solution/

Further Information	
System Balancing Reports	https://www.neso.energy/industry-information/industry-data-and-reports/system-balancing-reports
Forecast Volumes and Costs	https://www.neso.energy/industry-information/industry-data-and-reports/forecast-volumes-and-costs