

NESO
National Electricity
Transmission
System
Status report

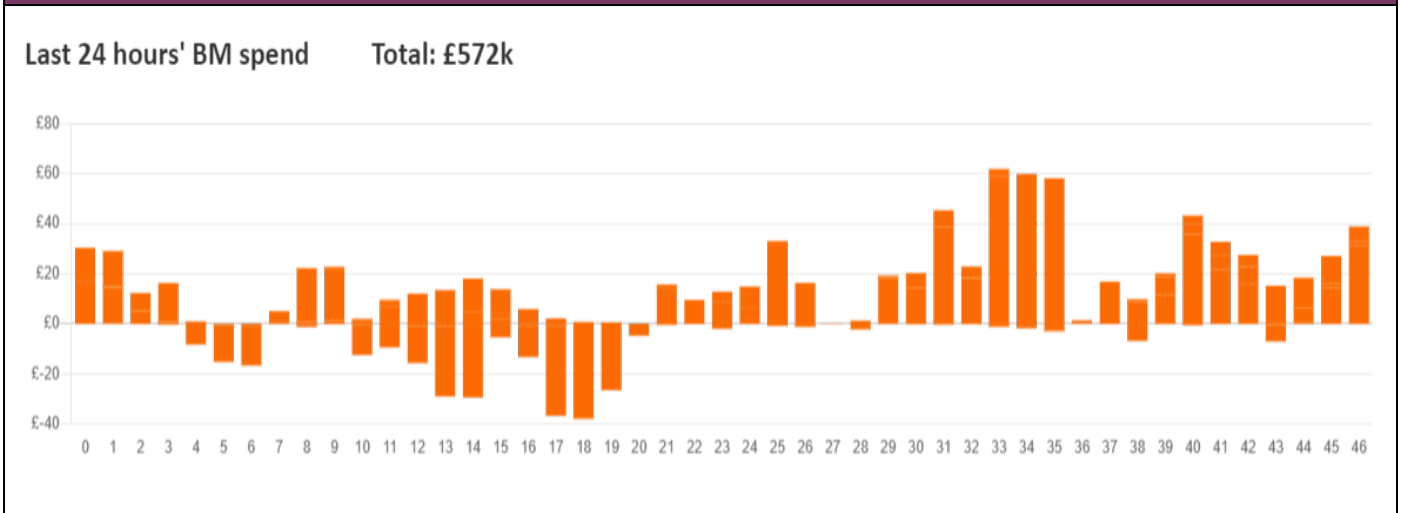


NESO National Electricity Transmission System Status Report
Sunday 05 January 2025

Today's High Level Risk Status Forecast for the next 24h			
General Status		Voltage	
Demand		System Inertia	
System Margins		Weather	
Generation		Transmission	
Active Constraints			
System Warning			

Today's Minimum De-Rated Margin	5,477 MW (SP 36)	
Current BMU Largest Loss Risk	Generation	1500 MW
	Demand	560 MW

Balancing Costs



Yesterday's Market Summary

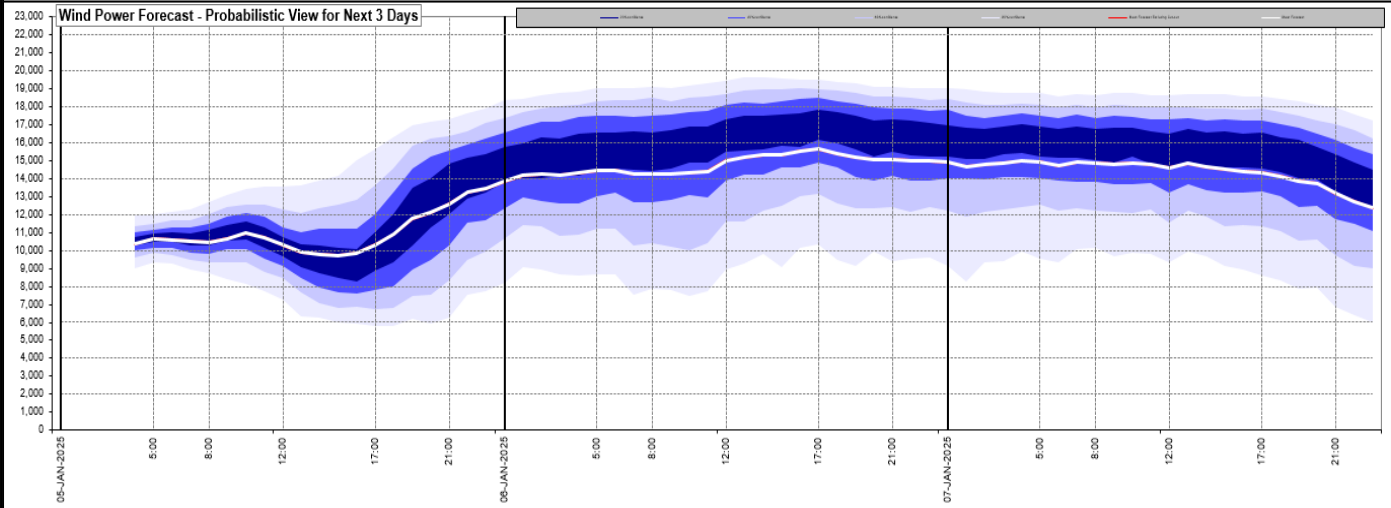
Cash Out Price (Max)	158.12 £/MWh (SP 37)
Cash Out Price (Min)	78.21 £/MWh (SP 8)
Peak Demand Yesterday	41,684 MW
Minimum Demand	24,352 MW

Interconnector

Net Transfer Capacity (MWs)

Today	Import	Export	Remarks
Netherlands (BritNed)	0	0	Unplanned Outage
France (IFA)	1500	1500	Partially Available
Belgium (Nemo)	1000	1000	Fully Available
Ireland (EWIC)	500	500	Fully Available
France (ElecLink)	0	0	Outage
Northern Ireland (MOYLE)	450	450	Fully Available
Norway (NSL)	1400	1400	Fully Available
France (IFA2)	1000	1000	Fully Available
Viking Link	1430	1430	Fully Available
Ireland (GreenLink)	0	0	Not yet commissioned

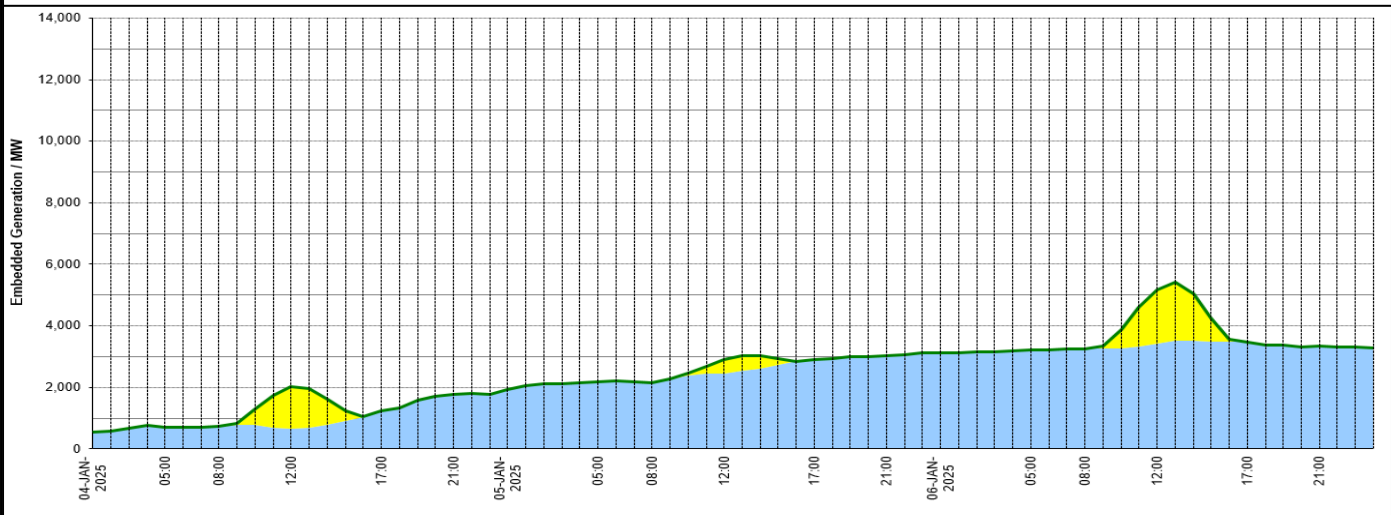
Wind Power Forecast



Expected embedded generation (MWs)

Embedded Generation Forecast

	04-JAN-2025					05-JAN-2025					06-JAN-2025						
	05:00	08:00	12:00	17:00	21:00	00:00	05:00	08:00	12:00	17:00	21:00	00:00	05:00	08:00	12:00	17:00	21:00
Solar (MW)	0	0	1371	0	0	0	0	0	447	0	0	0	0	0	1742	0	0
Wind (MW)	698	723	669	1245	1760	1942	2186	2163	2458	2913	3035	3135	3217	3257	3429	3484	3329
STOR (MW)	0	0	0	0	0	0	0	0	0	0	0	0	0	0	0	0	0
Total (MW)	698	723	2040	1245	1760	1942	2186	2163	2905	2913	3035	3135	3217	3257	5171	3484	3329



Weather	Source	Commentary
Latest forecast (Summary)	Met Office SEPA Natural Resources Wales	<p>Today: Cold in the north, with snow and sleet spreading across northern England and into southern Scotland. Wet further south, with freezing rain affecting parts of north Wales and central England, before turning drier and milder in the far south later.</p> <p>Tonight: Unsettled with further snow across the north, and heavy rain spreading eastwards in the south. Turning colder overnight, with snow returning to parts of England and Wales by Monday morning.</p>
General Weather Concerns e.g. wind, rain, snow, flooding, GB Weather Warnings	Met Office Weather Warnings SEPA Natural Resources Wales	<p>UK Weather Warnings Yellow warning of snow and ice Areas affected: East Midlands East of England North East England North West England Wales West Midlands Yorkshire & Humber</p> <p>ACTIVE Started at: 12:00 GMT on Sat 4 January Ends: 23:59 GMT on Sun 5 January Heavy snow, and some freezing rain in places, may cause some disruption over the weekend</p> <p>- There is a chance of travel delays on roads with some stranded vehicles and passengers, along with delayed or cancelled rail and air travel</p>

Weather	Source	Commentary
		<ul style="list-style-type: none"> - There is a slight chance that some rural communities could become cut off - A small chance of injuries from slips and falls on icy surfaces - There is a small chance that power cuts will occur and other services, such as mobile phone coverage, may be affected <p>Issued at: 11:12 GMT on Wed 1 January Last updated: 42 minutes ago Last updated: 42 minutes ago</p> <p>Yellow warning of ice Areas affected: Grampian Highlands & Eilean Siar Orkney & Shetland</p> <p>ACTIVE Started at: 16:00 GMT on Sat 4 January Ends: 10:00 GMT on Sun 5 January Icy surfaces leading to difficult travel conditions.</p> <ul style="list-style-type: none"> - Some injuries from slips and falls on icy surfaces - Probably some icy patches on some untreated roads, pavements and cycle paths <p>Issued at: 09:34 GMT on Sat 4 January</p> <p>Amber warning of snow and ice Areas affected: East Midlands North West England Wales West Midlands Yorkshire & Humber</p> <p>ACTIVE Started at: 18:00 GMT on Sat 4 January Ends: 12:00 GMT on Sun 5 January Snow and freezing rain will likely lead to disruption to transport and some other services.</p> <ul style="list-style-type: none"> - Travel delays on roads are likely, stranding some vehicles and passengers - Some delays and cancellations to bus, rail and air travel are likely - There is a good chance that some rural communities could become cut off - Some road closures and longer journey times possible - Untreated pavements and cycle paths likely to be impassable - There is a good chance that power cuts may occur, with the potential to affect other services, such as mobile phone coverage <p>Issued at: 10:49 GMT on Fri 3 January Last updated: 42 minutes ago Last updated: 42 minutes ago</p> <p>Amber warning of snow Areas affected: East Midlands North East England North West England West Midlands Yorkshire & Humber</p> <p>ACTIVE Started at: 21:00 GMT on Sat 4 January Ends: 23:59 GMT on Sun 5 January Snow expected to lead to disruption during Sunday across northern England.</p> <ul style="list-style-type: none"> - Travel delays on roads, stranding some vehicles and passengers - Delays and cancellations to rail and air travel is expected - Some rural communities cut off - Power cuts and other services, such as mobile phone coverage, affected <p>Issued at: 10:49 GMT on Fri 3 January</p> <p>Yellow warning of snow and ice Areas affected: Northern Ireland</p> <p>ACTIVE Started at: 21:00 GMT on Sat 4 January Ends: 18:00 GMT on Sun 5 January Ice and snow leading to disruption to transport and some infrastructure</p> <ul style="list-style-type: none"> - Some roads and railways likely to be affected with longer journey times by road, bus and train services - Some injuries from slips and falls on icy surfaces - Probably some icy patches on some untreated roads, pavements and cycle paths

Weather	Source	Commentary
		<p>Issued at: 09:33 GMT on Sat 4 January</p> <p>Yellow warning of snow Areas affected: Central, Tayside & Fife SW Scotland, Lothian Borders Strathclyde</p> <p>ACTIVE Started at: 00:00 GMT on Sun 5 January Ends: 06:00 GMT on Mon 6 January Heavy snow on Sunday and overnight into Monday may cause some disruption.</p> <ul style="list-style-type: none"> - There is a chance of travel delays on roads with some stranded vehicles and passengers, along with delayed or cancelled rail and air travel - There is a slight chance that some rural communities could become cut off - There is a small chance that power cuts will occur and other services, such as mobile phone coverage, may be affected <p>Issued at: 11:07 GMT on Thu 2 January Last updated: 19 hours ago Last updated: 19 hours ago</p> <p>Yellow warning of rain Areas affected: East Midlands North West England Wales West Midlands</p> <p>Starts: 06:00 GMT on Sun 5 January Ends: 21:00 GMT on Sun 5 January Heavy rain and thawing snow leading to some flooding in places.</p> <ul style="list-style-type: none"> - Bus and train services probably affected with journey times taking longer - Spray and flooding on roads probably making journey times longer <p>Issued at: 09:34 GMT on Sat 4 January</p> <p>Yellow warning of snow and ice Areas affected: Central, Tayside & Fife Grampian Highlands & Eilean Siar SW Scotland, Lothian Borders Strathclyde</p> <p>Starts: 09:00 GMT on Sun 5 January Ends: 06:00 GMT on Mon 6 January Wintry showers and icy patches will bring the potential for some disruption.</p> <ul style="list-style-type: none"> - Some roads and railways likely to be affected with longer journey times by road, bus and train services - Some injuries from slips and falls on icy surfaces - Probably some icy patches on some untreated roads, pavements and cycle paths
		<p>Issued at: 10:04 GMT on Sat 4 January</p> <p>Flood Warnings</p> <p>1 flood warnings and 41 flood alerts issued for England.</p> <p>0 flood warnings and 0 flood alerts issued for Scotland.</p> <p>0 flood warnings and 5 flood alerts issued for Wales.</p>

Contains public sector information licensed under the Open Government Licence v1.0

Further Information	
BM Reports	https://www.elexon.co.uk/data/kinnect-insights-solution/
System Balancing Reports	https://www.neso.energy/industry-information/industry-data-and-reports/system-balancing-reports
Forecast Volumes and Costs	https://www.neso.energy/industry-information/industry-data-and-reports/forecast-volumes-and-costs