

**NESO**  
**National Electricity**  
**Transmission**  
**System**  
Status report

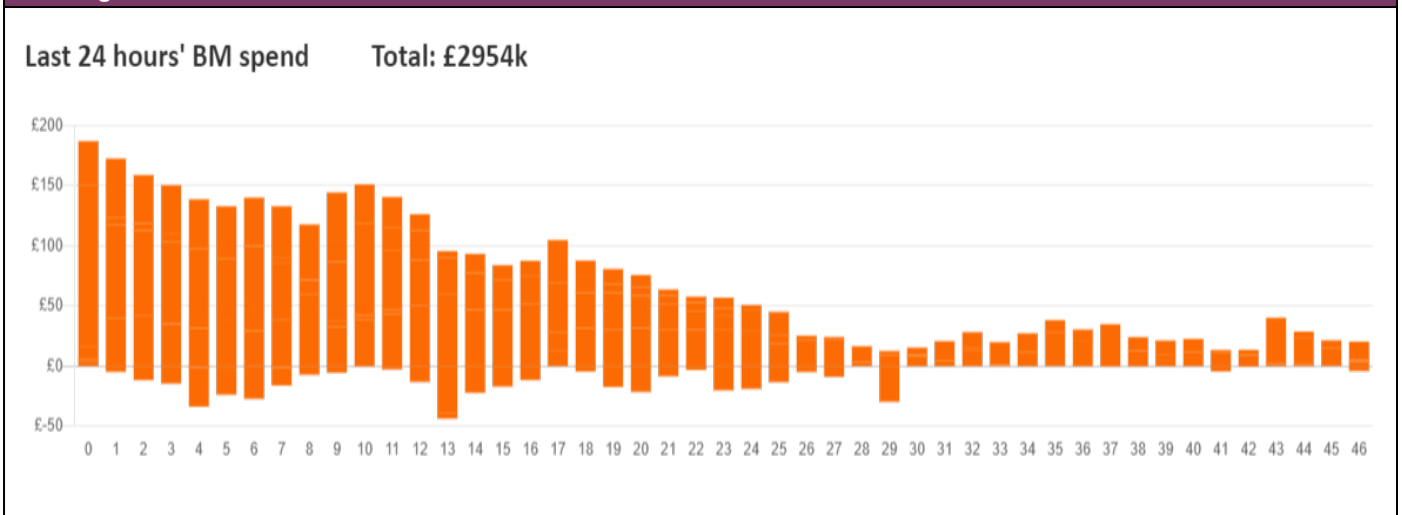


NESO National Electricity Transmission System Status Report  
Saturday 04 January 2025

Today's High Level Risk Status Forecast for the next 24h			
General Status		Voltage	
Demand		System Inertia	
System Margins		Weather	
Generation		Transmission	
Active Constraints			
<a href="#">System Warning</a>			

<a href="#">Today's Minimum De-Rated Margin</a>	3,292 MW (SP 38)	
Current BMU Largest Loss Risk	Generation	1500 MW
	Demand	560 MW

Balancing Costs



Yesterday's Market Summary

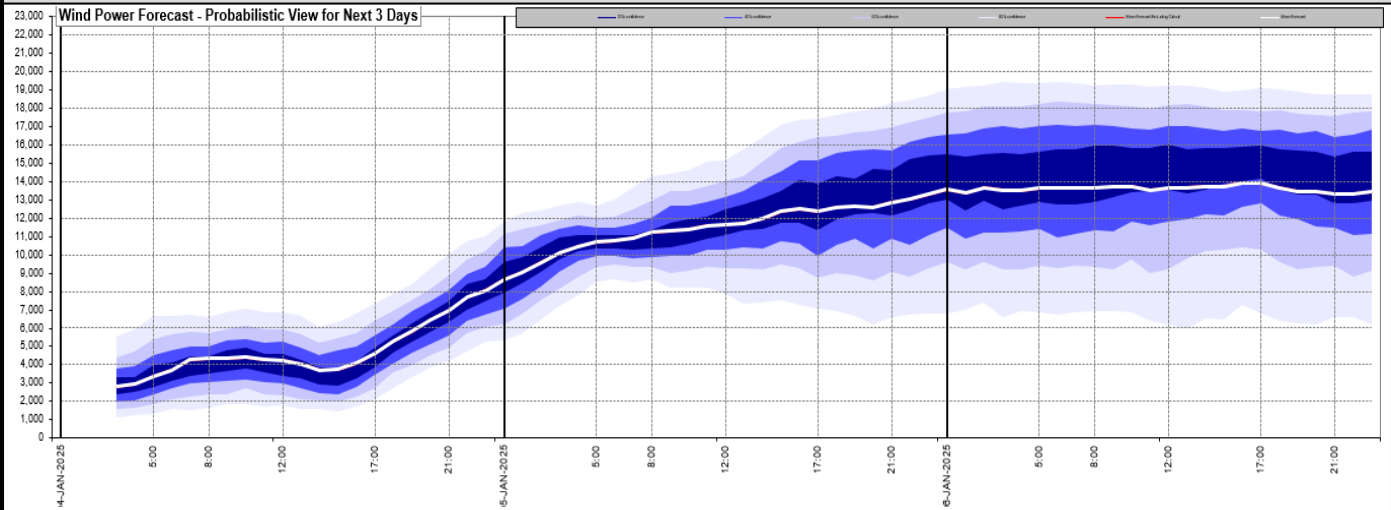
<a href="#">Cash Out Price (Max)</a>	160 £/MWh (SP 38,39)
<a href="#">Cash Out Price (Min)</a>	-2.59 £/MWh (SP 10)
<a href="#">Peak Demand Yesterday</a>	43,911 MW
<a href="#">Minimum Demand</a>	24,176 MW

Interconnector

Net Transfer Capacity (MWs)

Today	Import	Export	Remarks
Netherlands (BritNed)	0	0	Unplanned Outage
France (IFA)	1500	1500	Partially Available
Belgium (Nemo)	1000	1000	Fully Available
Ireland (EWIC)	500	500	Fully Available
France (ElecLink)	0	0	Outage
Northern Ireland (MOYLE)	450	450	Fully Available
Norway (NSL)	1400	1400	Fully Available
France (IFA2)	1000	1000	Fully Available
Viking Link	1430	1430	Fully Available
Ireland (GreenLink)	0	0	Not yet commissioned

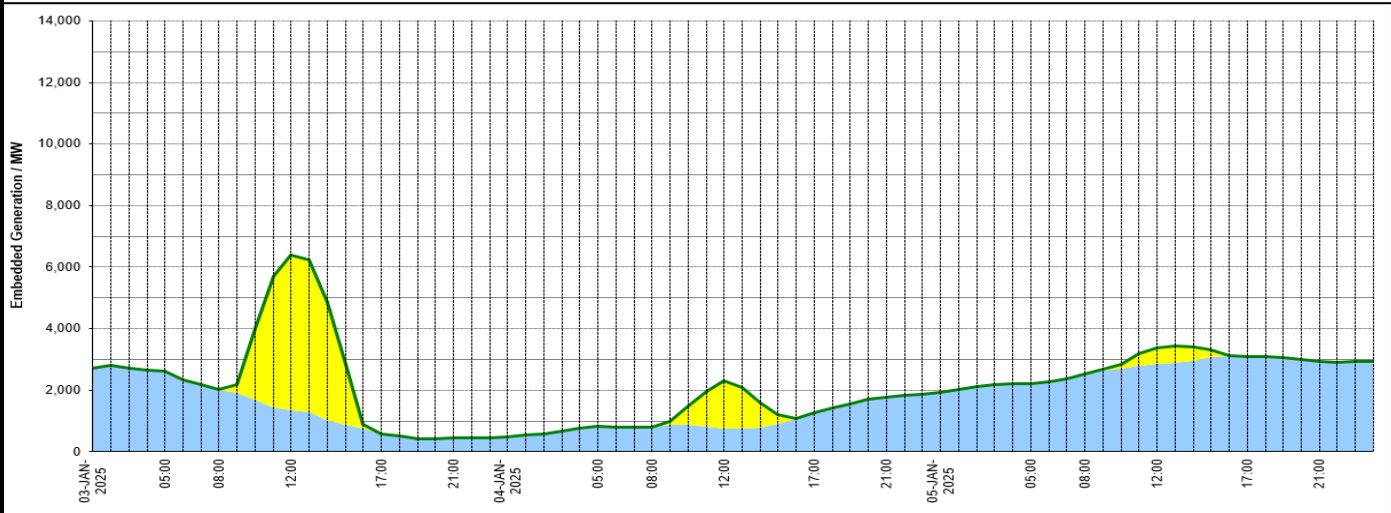
### Wind Power Forecast



### Expected embedded generation (MWs)

#### Embedded Generation Forecast

	03-JAN-2025					04-JAN-2025					05-JAN-2025						
	05:00	08:00	12:00	17:00	21:00	00:00	05:00	08:00	12:00	17:00	21:00	00:00	05:00	08:00	12:00	17:00	21:00
Solar (MW)	0	0	5049	0	0	0	0	0	1544	0	0	0	0	0	546	0	0
Wind (MW)	2611	2014	1344	584	441	471	833	809	754	1264	1779	1937	2218	2516	2842	3091	2943
STOR (MW)	0	0	0	0	0	0	0	0	0	0	0	0	0	0	0	0	0
<b>Total (MW)</b>	<b>2611</b>	<b>2014</b>	<b>6393</b>	<b>584</b>	<b>441</b>	<b>471</b>	<b>833</b>	<b>809</b>	<b>2298</b>	<b>1264</b>	<b>1779</b>	<b>1937</b>	<b>2218</b>	<b>2516</b>	<b>3388</b>	<b>3091</b>	<b>2943</b>



Weather	Source	Commentary
Latest forecast (Summary)	<a href="#">Met Office</a> <a href="#">SEPA</a> <a href="#">Natural Resources Wales</a>	<b>Today:</b> A cold and frosty morning for many, however thicker cloud will spread in from the southwest during the afternoon, with a mixture of rain, sleet and snow accompanied by stronger winds pushing northeastwards. Another cold day. <b>Tonight:</b> Rain, locally freezing for a time in the west, sleet and snow continues to spread northeastwards into England, Wales and Northern Ireland. Clear spells ahead with an overnight frost.
General Weather Concerns e.g. wind, rain, snow, flooding, GB Weather Warnings	<a href="#">Met Office</a> <a href="#">Weather Warnings</a> <a href="#">SEPA</a> <a href="#">Natural Resources Wales</a>	<b>UK Weather Warnings</b> Yellow warning of ice Areas affected: Central, Tayside & Fife   East Midlands   Grampian   Highlands & Eilean Siar   North East England   North West England   Northern Ireland   Orkney & Shetland   SW Scotland, Lothian Borders   Strathclyde   Wales   West Midlands   Yorkshire & Humber ACTIVE Started at: 16:00 GMT on Fri 3 January Ends: 10:00 GMT on Sat 4 January Icy surfaces leading to difficult travel conditions. - Probably some icy patches on some untreated roads, pavements and cycle paths

Weather	Source	Commentary
		<p>- Some injuries from slips and falls on icy surfaces</p> <p>Issued at: 09:56 GMT on Fri 3 January Last updated: 6 hours ago</p> <p>Yellow warning of snow and ice Areas affected: East Midlands   East of England   London &amp; South East England   North East England   North West England   South West England   Wales   West Midlands   Yorkshire &amp; Humber</p> <p>Starts: 12:00 GMT on Sat 4 January Ends: 23:59 GMT on Sun 5 January Heavy snow, and some freezing rain in places, may cause some disruption over the weekend</p> <ul style="list-style-type: none"> <li>- There is a chance of travel delays on roads with some stranded vehicles and passengers, along with delayed or cancelled rail and air travel</li> <li>- There is a slight chance that some rural communities could become cut off</li> <li>- A small chance of injuries from slips and falls on icy surfaces</li> <li>- There is a small chance that power cuts will occur and other services, such as mobile phone coverage, may be affected</li> </ul> <p>Issued at: 11:12 GMT on Wed 1 January Last updated: 2 days ago</p> <p>Amber warning of snow and ice Areas affected: East Midlands   London &amp; South East England   North West England   South West England   Wales   West Midlands   Yorkshire &amp; Humber</p> <p>Starts: 18:00 GMT on Sat 4 January Ends: 12:00 GMT on Sun 5 January Snow and freezing rain will likely lead to disruption to transport and some other services.</p> <ul style="list-style-type: none"> <li>- Travel delays on roads are likely, stranding some vehicles and passengers</li> <li>- Some delays and cancellations to bus, rail and air travel are likely</li> <li>- There is a good chance that some rural communities could become cut off</li> <li>- Some road closures and longer journey times possible</li> <li>- Untreated pavements and cycle paths likely to be impassable</li> <li>- There is a good chance that power cuts may occur, with the potential to affect other services, such as mobile phone coverage</li> </ul> <p>Issued at: 10:49 GMT on Fri 3 January Amber warning of snow Areas affected: East Midlands   North East England   North West England   West Midlands   Yorkshire &amp; Humber</p> <p>Starts: 21:00 GMT on Sat 4 January Ends: 23:59 GMT on Sun 5 January Snow expected to lead to disruption during Sunday across northern England.</p> <ul style="list-style-type: none"> <li>- Travel delays on roads, stranding some vehicles and passengers</li> <li>- Delays and cancellations to rail and air travel is expected</li> <li>- Some rural communities cut off</li> <li>- Power cuts and other services, such as mobile phone coverage, affected</li> </ul> <p>Issued at: 10:49 GMT on Fri 3 January Yellow warning of snow Areas affected: Central, Tayside &amp; Fife   Grampian   Highlands &amp; Eilean Siar   North East England   North West England   SW Scotland, Lothian Borders   Strathclyde</p> <p>Starts: 00:00 GMT on Sun 5 January Ends: 12:00 GMT on Mon 6 January Heavy snow on Sunday and overnight into Monday may cause some disruption</p> <ul style="list-style-type: none"> <li>- There is a chance of travel delays on roads with some stranded vehicles and passengers, along with delayed or cancelled rail and air travel</li> <li>- There is a slight chance that some rural communities could become cut off</li> </ul>

Weather	Source	Commentary
		- There is a small chance that power cuts will occur and other services, such as mobile phone coverage, may be affected
		Issued at: 11:07 GMT on Thu 2 January
		<b>Flood Warnings</b> 3 flood warnings and 24 flood alerts issued for England.  0 flood warnings and 0 flood alerts issued for Scotland.  0 flood warnings and 2 flood alerts issued for Wales.

Contains public sector information licensed under the Open Government Licence v1.0

Further Information	
BM Reports	<a href="https://www.elexon.co.uk/data/kinnect-insights-solution/">https://www.elexon.co.uk/data/kinnect-insights-solution/</a>
System Balancing Reports	<a href="https://www.neso.energy/industry-information/industry-data-and-reports/system-balancing-reports">https://www.neso.energy/industry-information/industry-data-and-reports/system-balancing-reports</a>
Forecast Volumes and Costs	<a href="https://www.neso.energy/industry-information/industry-data-and-reports/forecast-volumes-and-costs">https://www.neso.energy/industry-information/industry-data-and-reports/forecast-volumes-and-costs</a>