

NESO
National Electricity
Transmission
System
Status report

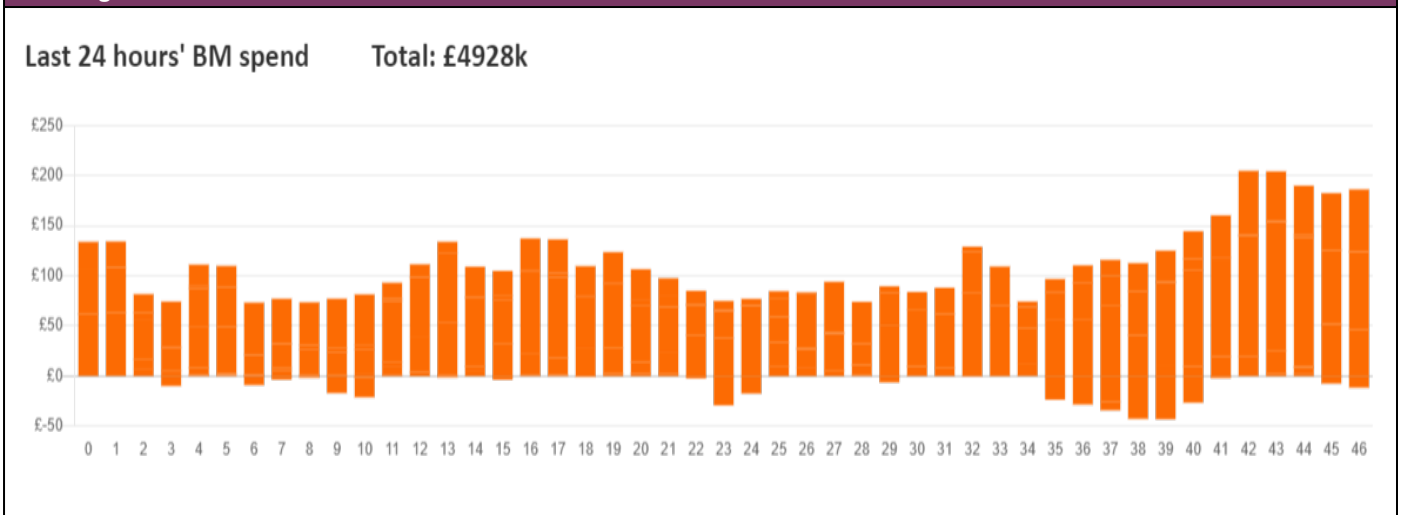


NESO National Electricity Transmission System Status Report
Friday 03 January 2025

Today's High Level Risk Status Forecast for the next 24h			
General Status		Voltage	
Demand		System Inertia	
System Margins		Weather	
Generation		Transmission	
Active Constraints			
System Warning			

Today's Minimum De-Rated Margin	2,959 MW (SP 37)	
Current BMU Largest Loss Risk	Generation	1500 MW
	Demand	560 MW

Balancing Costs



Yesterday's Market Summary

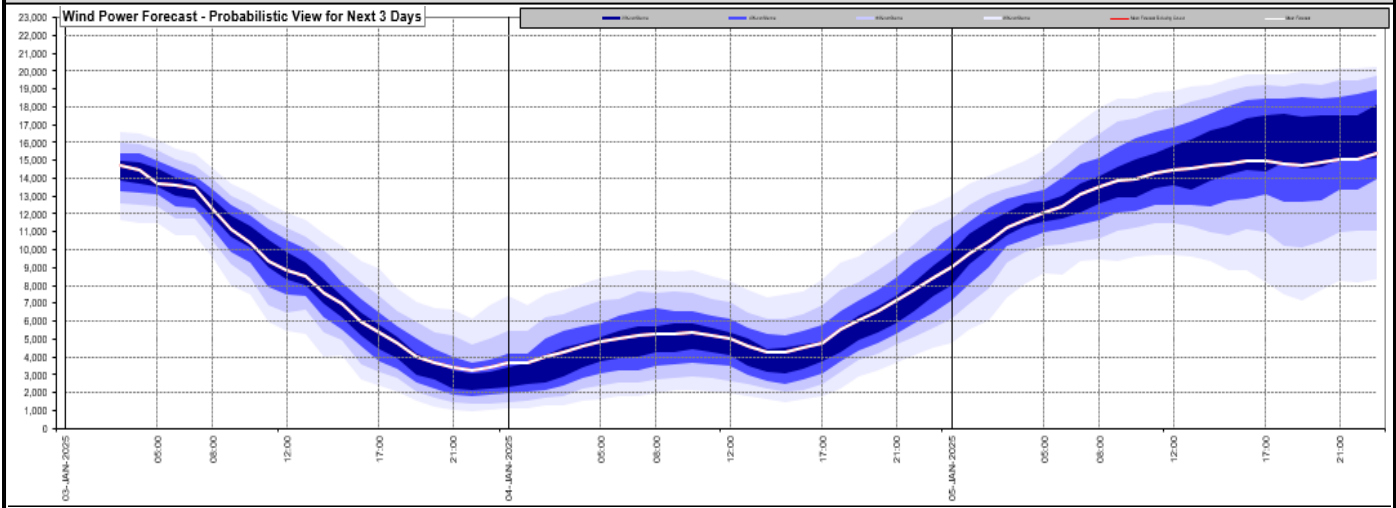
Cash Out Price (Max)	156.9 £/MWh (SP 30, 32-36)
Cash Out Price (Min)	53.5 £/MWh (SP 11-12)
Peak Demand Yesterday	41,589 MW
Minimum Demand	21,857 MW

Interconnector

Net Transfer Capacity (MWs)

Today	Import	Export	Remarks
Netherlands (BritNed)	0	0	Unplanned Outage
France (IFA)	1500	1500	Partially Available
Belgium (Nemo)	1000	1000	Fully Available
Ireland (EWIC)	500	500	Fully Available
France (ElecLink)	0	0	Outage
Northern Ireland (MOYLE)	450	450	Fully Available
Norway (NSL)	1400	1400	Fully Available
France (IFA2)	1000	1000	Fully Available
Viking Link	1430	1430	Fully Available
Ireland (GreenLink)	0	0	Not yet commissioned

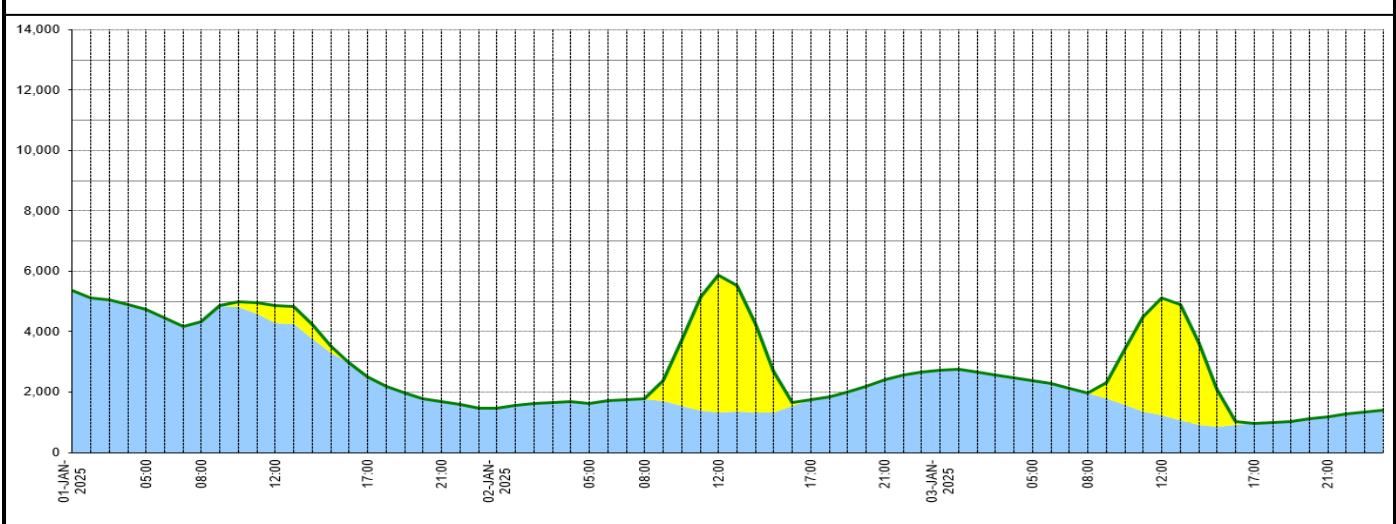
Wind Power Forecast



Expected embedded generation (MWs)

Embedded Generation Forecast

	02-JAN-2025					03-JAN-2025					04-JAN-2025						
	05:00	08:00	12:00	17:00	21:00	00:00	05:00	08:00	12:00	17:00	21:00	00:00	05:00	08:00	12:00	17:00	21:00
Solar (MW)	0	0	5320	0	0	0	0	4201	0	0	0	0	0	0	1756	0	0
Wind (MW)	1612	1770	1381	1728	1821	2510	2534	1933	1050	719	638	790	1008	1082	886	1381	1856
STOR (MW)	0	0	0	0	0	0	0	0	0	0	0	0	0	0	0	0	0
Total (MW)	1612	1770	6701	1728	1821	2510	2534	1933	5251	719	638	790	1008	1082	2642	1381	1856



Weather	Source	Commentary
Latest forecast (Summary)	Met Office SEPA Natural Resources Wales	<p>Today: It will remain cold but mostly dry and sunny for many. Snow showers will continue to affect coasts exposed to the northerly wind, but these will be more of a wintry mix of rain, sleet and snow in the west.</p> <p>Tonight: Showers in the north and west, these wintry over the hills will move eastwards. Elsewhere with clear spells, temperatures will drop below freezing with a widespread frost developing for many.</p>
General Weather Concerns e.g. wind, rain, snow, flooding, GB Weather Warnings	Met Office Weather Warnings SEPA Natural Resources Wales	<p>UK Weather Warnings Yellow warning of snow and ice Areas affected: Central, Tayside & Fife Grampian Highlands & Eilean Siar Orkney & Shetland Strathclyde ACTIVE Started at: 16:00 GMT on Thu 2 January Ends: 10:00 GMT on Fri 3 January Snow and ice causing some travel disruption. - Some roads and railways likely to be affected with longer journey times by road, bus and train services - Some injuries from slips and falls on icy surfaces</p>

Weather	Source	Commentary
		<p>- Probably some icy patches on some untreated roads, pavements and cycle paths Issued at: 09:53 GMT on Thu 2 January</p> <p>Yellow warning of ice Areas affected: Central, Tayside & Fife Highlands & Eilean Siar North West England Northern Ireland SW Scotland, Lothian Borders Strathclyde Yorkshire & Humber ACTIVE Started at: 17:00 GMT on Thu 2 January Ends: 10:00 GMT on Fri 3 January Icy surfaces leading to difficult travel conditions. - Some injuries from slips and falls on icy surfaces - Probably some icy patches on some untreated roads, pavements and cycle paths Issued at: 09:54 GMT on Thu 2 January</p> <p>Yellow warning of ice Areas affected: Wales ACTIVE Started at: 18:00 GMT on Thu 2 January Ends: 10:00 GMT on Fri 3 January Icy surfaces probably leading to difficult travel conditions. - Some injuries from slips and falls on icy surfaces - Probably some icy patches on some untreated roads, pavements and cycle paths Issued at: 17:15 GMT on Thu 2 January</p> <p>Yellow warning of snow and ice Areas affected: East Midlands East of England London & South East England North East England North West England South West England Wales West Midlands Yorkshire & Humber Starts: 12:00 GMT on Sat 4 January Ends: 23:59 GMT on Sun 5 January Heavy snow, and some freezing rain in places, may cause some disruption over the weekend - There is a chance of travel delays on roads with some stranded vehicles and passengers, along with delayed or cancelled rail and air travel - There is a slight chance that some rural communities could become cut off - A small chance of injuries from slips and falls on icy surfaces - There is a small chance that power cuts will occur and other services, such as mobile phone coverage, may be affected Issued at: 11:12 GMT on Wed 1 January Last updated: 17 hours ago</p> <p>Yellow warning of snow Areas affected: Central, Tayside & Fife Grampian Highlands & Eilean Siar North East England North West England SW Scotland, Lothian Borders Strathclyde Starts: 00:00 GMT on Sun 5 January Ends: 12:00 GMT on Mon 6 January Heavy snow on Sunday and overnight into Monday may cause some disruption - There is a chance of travel delays on roads with some stranded vehicles and passengers, along with delayed or cancelled rail and air travel - There is a slight chance that some rural communities could become cut off - There is a small chance that power cuts will occur and other services, such as mobile phone coverage, may be affected Issued at: 11:07 GMT on Thu 2 January</p> <p>Flood Warnings 7 flood warnings and 38 flood alerts issued for England. 0 flood warnings and 1 flood alerts issued for Scotland. 0 flood warnings and 5 flood alerts issued for Wales.</p>

Contains public sector information licensed under the Open Government Licence v1.0

Further Information	
BM Reports	https://www.elexon.co.uk/data/kinnect-insights-solution/
System Balancing Reports	https://www.neso.energy/industry-information/industry-data-and-reports/system-balancing-reports
Forecast Volumes and Costs	https://www.neso.energy/industry-information/industry-data-and-reports/forecast-volumes-and-costs