

NESO
National Electricity
Transmission
System
Status report

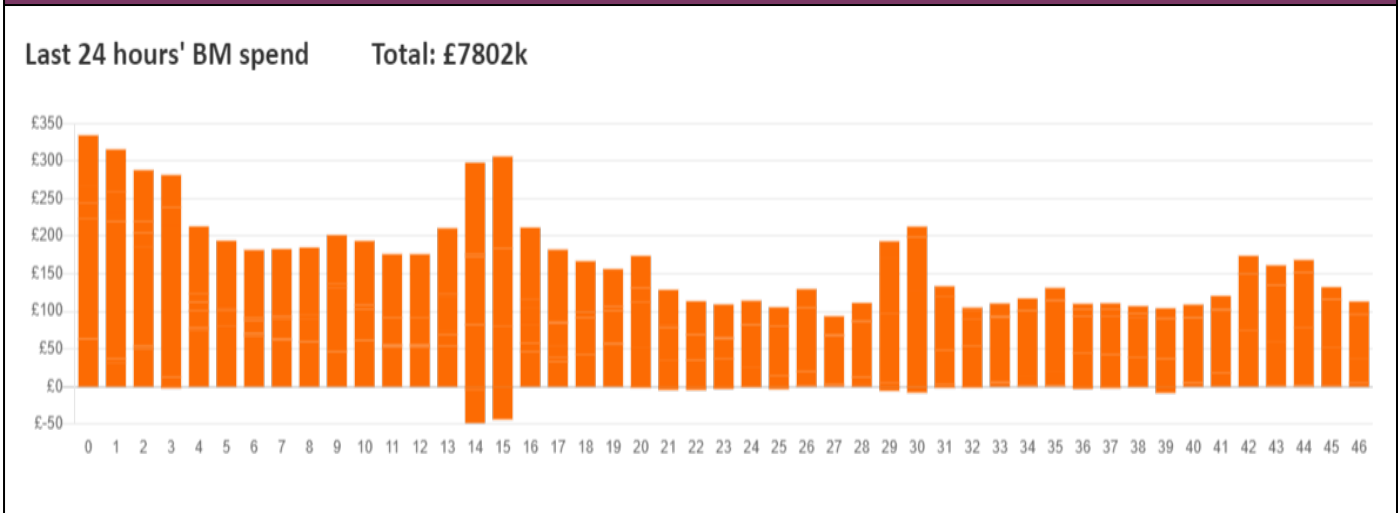


NESO National Electricity Transmission System Status Report
Thursday 02 January 2025

Today's High Level Risk Status Forecast for the next 24h			
General Status		Voltage	
Demand		System Inertia	
System Margins		Weather	
Generation		Transmission	
Active Constraints			
System Warning			

Today's Minimum De-Rated Margin	9,346 MW (SP 36)	
Current BMU Largest Loss Risk	Generation	1500 MW
	Demand	560 MW

Balancing Costs



Yesterday's Market Summary

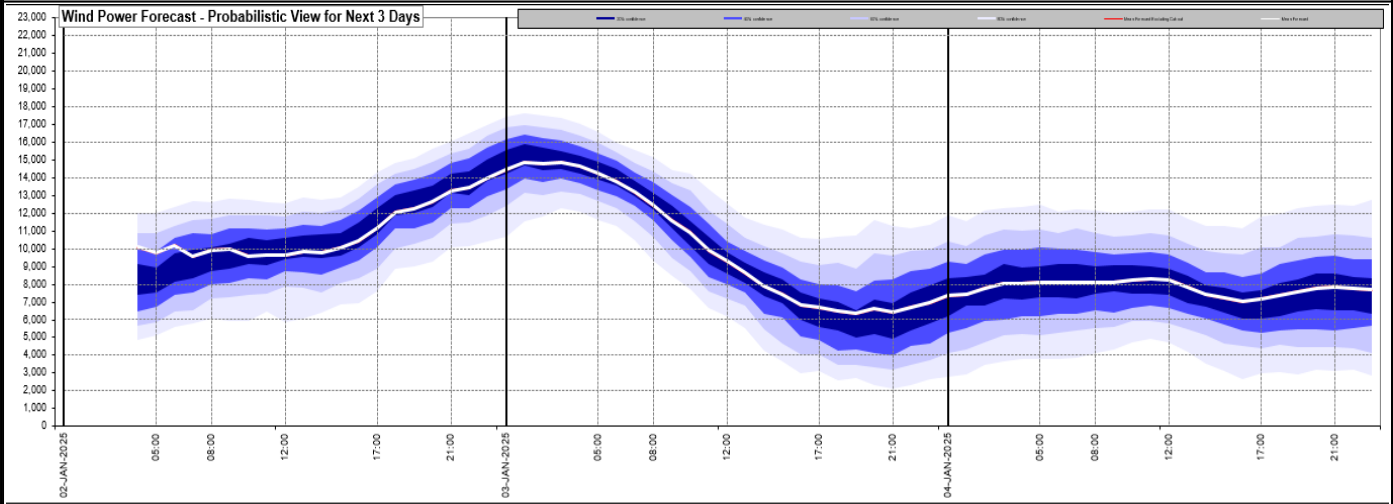
Cash Out Price (Max)	136 £/MWh (SP 36-37)
Cash Out Price (Min)	-71.91 £/MWh (SP 17)
Peak Demand Yesterday	34,021 MW
Minimum Demand	17,383 MW

Interconnector

Net Transfer Capacity (MWs)

Today	Import	Export	Remarks
Netherlands (BritNed)	0	0	Unplanned Outage
France (IFA)	1500	1500	Partially Available
Belgium (Nemo)	1000	1000	Fully Available
Ireland (EWIC)	500	500	Fully Available
France (ElecLink)	0	0	Outage
Northern Ireland (MOYLE)	450	450	Fully Available
Norway (NSL)	1400	1400	Fully Available
France (IFA2)	1000	1000	Fully Available
Viking Link	1430	1430	Fully Available
Ireland (GreenLink)	0	0	Not yet commissioned

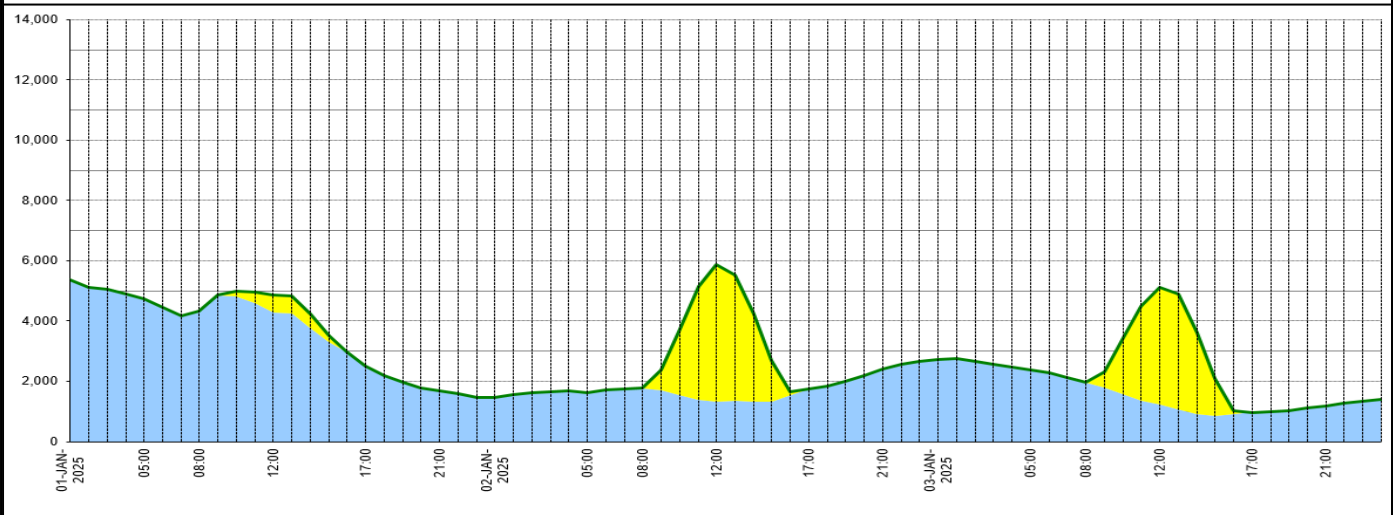
Wind Power Forecast



Expected embedded generation (MWs)

Embedded Generation Forecast

	01-JAN-2025					02-JAN-2025					03-JAN-2025						
	05:00	08:00	12:00	17:00	21:00	00:00	05:00	08:00	12:00	17:00	21:00	00:00	05:00	08:00	12:00	17:00	21:00
Solar (MW)	0	0	572	0	0	0	0	0	4549	0	0	0	0	0	3895	0	0
Wind (MW)	4730	4336	4298	2499	1676	1453	1612	1775	1338	1738	2405	2738	2389	1964	1218	969	1179
STOR (MW)	0	0	0	0	0	0	0	0	0	0	0	0	0	0	0	0	0
Total (MW)	4730	4336	4870	2499	1676	1453	1612	1775	5887	1738	2405	2738	2389	1964	5113	969	1179



Weather	Source	Commentary
Latest forecast (Summary)	Met Office SEPA Natural Resources Wales	<p>Today: It will be a cold but mostly sunny day across the UK. Wintry showers for coasts exposed to the northerly breeze and North Sea. Remaining blustery in the north and east with lighter winds elsewhere.</p> <p>Tonight: A cold and frosty night will then follow for all with icy stretches possible. Wintry showers will persist in the north and patchy freezing fog is possible in the west.</p>
General Weather Concerns e.g. wind, rain, snow, flooding, GB Weather Warnings	Met Office Weather Warnings SEPA Natural Resources Wales	<p>UK Weather Warnings Yellow warning of snow and ice Areas affected: Grampian Highlands & Eilean Siar Orkney & Shetland ACTIVE Started at: 04:00 GMT on Wed 1 January Ends: 10:00 GMT on Thu 2 January Snow and ice will likely lead to some travel disruption and difficult driving conditions. - Some roads and railways likely to be affected with longer journey times by road, bus and train services - Some injuries from slips and falls on icy surfaces - Probably some icy patches on some untreated roads, pavements and cycle paths Issued at: 12:03 GMT on Mon 30 December</p>

Weather	Source	Commentary
		<p>Last updated: 17 hours agoLast updated: 17 hours ago</p> <p>Yellow warning of ice Areas affected: Central, Tayside & Fife East Midlands Grampian Highlands & Eilean Siar North East England North West England Northern Ireland SW Scotland, Lothian Borders Strathclyde Wales West Midlands Yorkshire & Humber ACTIVE Started at: 16:00 GMT on Wed 1 January Ends: 10:00 GMT on Thu 2 January Icy surfaces leading to some difficult travel conditions. - Some injuries from slips and falls on icy surfaces - Probably some icy patches on some untreated roads, pavements and cycle paths Issued at: 10:42 GMT on Wed 1 January</p> <p>Yellow warning of snow Areas affected: Central, Tayside & Fife East Midlands East of England London & South East England North East England North West England SW Scotland, Lothian Borders South West England Strathclyde Wales West Midlands Yorkshire & Humber Starts: 12:00 GMT on Sat 4 January Ends: 09:00 GMT on Mon 6 January Heavy snow may cause some disruption over the weekend - There is a chance of travel delays on roads with some stranded vehicles and passengers, along with delayed or cancelled rail and air travel - There is a slight chance that some rural communities could become cut off - There is a small chance that power cuts will occur and other services, such as mobile phone coverage, may be affected Issued at: 11:12 GMT on Wed 1 January</p> <p>Flood Warnings 43 flood warnings and 83 flood alerts issued for England. 11 flood warnings and 4 flood alerts issued for Scotland. 4 flood warnings and 13 flood alerts issued for Wales.</p>

Contains public sector information licensed under the Open Government Licence v1.0

Further Information	
BM Reports	https://www.elexon.co.uk/data/kinnect-insights-solution/
System Balancing Reports	https://www.neso.energy/industry-information/industry-data-and-reports/system-balancing-reports
Forecast Volumes and Costs	https://www.neso.energy/industry-information/industry-data-and-reports/forecast-volumes-and-costs