

NESO
National Electricity
Transmission
System
Status report

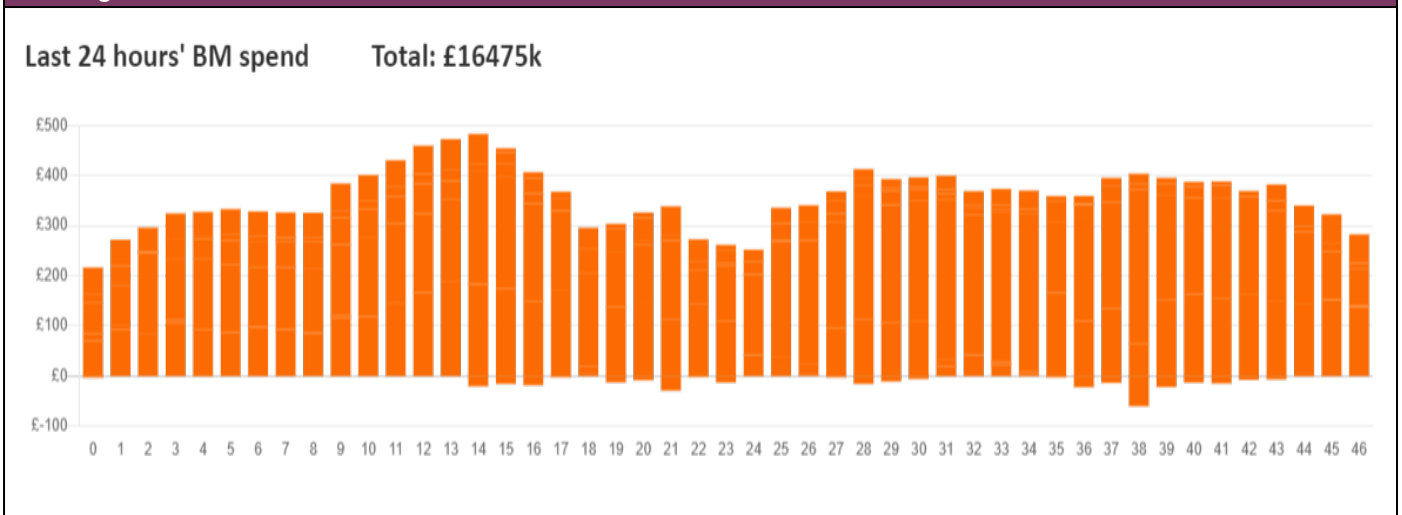


NESO National Electricity Transmission System Status Report
Wednesday 01 January 2025

Today's High Level Risk Status Forecast for the next 24h			
General Status		Voltage	
Demand		System Inertia	
System Margins		Weather	
Generation		Transmission	
Active Constraints			
System Warning			

Today's Minimum De-Rated Margin	17,051 MW (SP 35)	
Current BMU Largest Loss Risk	Generation	1500 MW
	Demand	560 MW

Balancing Costs



Yesterday's Market Summary

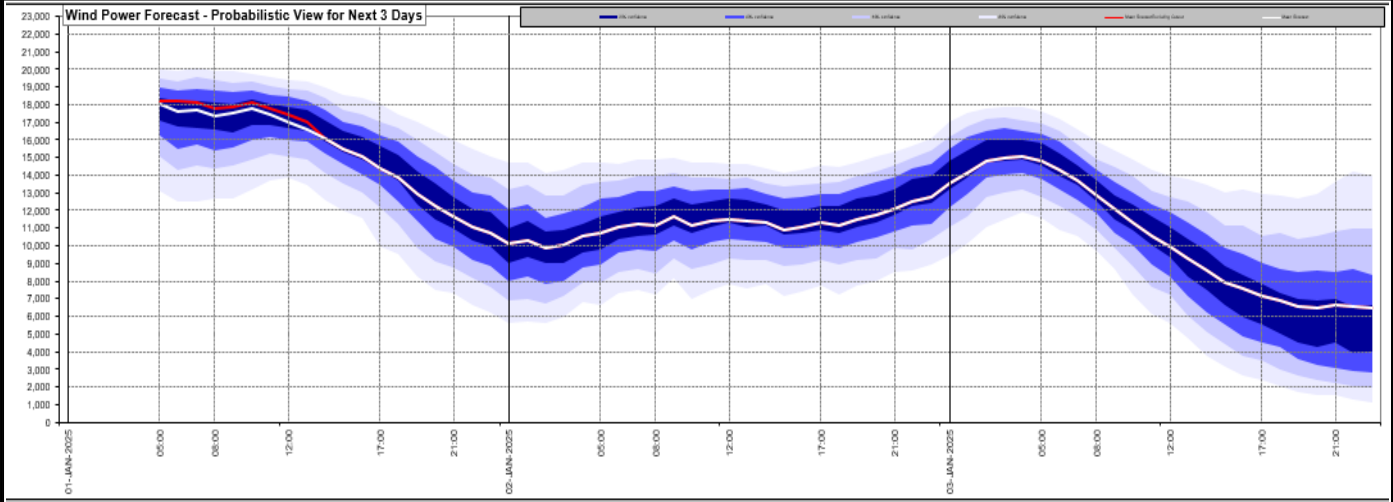
Cash Out Price (Max)	£124.75 /MWh (SP 20)
Cash Out Price (Min)	-£11.41 /MWh (SP 01)
Peak Demand Yesterday	32,513 MW
Minimum Demand	18,309 MW

Interconnector

Net Transfer Capacity (MWs)

Today	Import	Export	Remarks
Netherlands (BritNed)	0	0	Unplanned Outage
France (IFA)	1500	1500	Partially Available
Belgium (Nemo)	1000	1000	Fully Available
Ireland (EWIC)	500	500	Fully Available
France (ElecLink)	0	0	Outage
Northern Ireland (MOYLE)	450	450	Fully Available
Norway (NSL)	1400	1400	Fully Available
France (IFA2)	1000	1000	Fully Available
Viking Link	1430	1430	Fully Available
Ireland (GreenLink)	0	0	Not yet commissioned

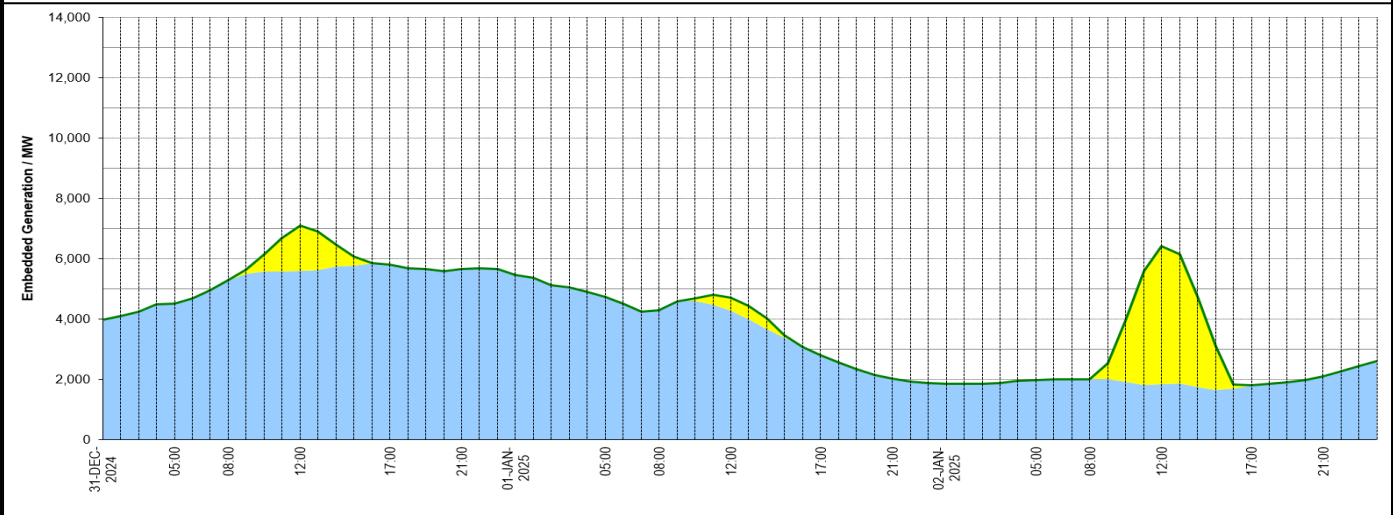
Wind Power Forecast



Expected embedded generation (MWs)

Embedded Generation Forecast

	31-DEC-2024					01-JAN-2025					02-JAN-2025						
	05:00	08:00	12:00	17:00	21:00	00:00	05:00	08:00	12:00	17:00	21:00	00:00	05:00	08:00	12:00	17:00	21:00
Solar (MW)	0	0	1509	0	0	0	0	0	428	0	0	0	0	0	4573	0	0
Wind (MW)	4498	5279	5592	5813	5652	5452	4730	4278	4278	2809	2025	1846	1961	1997	1838	1793	2094
STOR (MW)	0	0	0	0	0	0	0	0	0	0	0	0	0	0	0	0	0
Total (MW)	4498	5279	7101	5813	5652	5452	4730	4278	4706	2809	2025	1846	1961	1997	6411	1793	2094



Weather	Source	Commentary
Latest forecast (Summary)	Met Office SEPA Natural Resources Wales	<p>Today: A wet and windy New Year's Day for much of England and Wales, but turning drier later in the day. Colder for Northern Ireland and Scotland, with a mix of sunshine and wintry showers gradually spreading south.</p> <p>Tonight: Rain in the far south clearing. Colder and clearer conditions following for all with wintry showers persisting around northern coasts. Frost, fog and icy patches likely developing.</p>
General Weather Concerns e.g. wind, rain, snow, flooding, GB Weather Warnings	Met Office Weather Warnings SEPA Natural Resources Wales	<p>UK Weather Warnings Yellow warning of rain Areas affected: East Midlands North West England Wales West Midlands Yorkshire & Humber ACTIVE Started at: 15:00 GMT on Tue 31 December Ends: 11:00 GMT on Wed 1 January Heavy rain is likely to lead to disruption across Wales and parts of northern England, with a chance of flooding in some locations. - Homes and businesses could be flooded, causing damage to some buildings - Fast flowing or deep floodwater is possible, causing a danger to life</p>

Weather	Source	Commentary
		<ul style="list-style-type: none"> - Delays or cancellations to train and bus services are possible - Spray and flooding could lead to difficult driving conditions and some road closures - Some communities may be cut off by flooded roads - Possible power cuts and loss of other services to some homes and businesses <p>Flood Warnings</p> <p>92 flood warnings and 109 flood alerts issued for England.</p> <p>32 flood warnings and 9 flood alerts issued for Scotland.</p> <p>10 flood warnings and 34 flood alerts issued for Wales.</p>

Contains public sector information licensed under the Open Government Licence v1.0

Further Information	
BM Reports	https://www.elexon.co.uk/data/kinnect-insights-solution/
System Balancing Reports	https://www.neso.energy/industry-information/industry-data-and-reports/system-balancing-reports
Forecast Volumes and Costs	https://www.neso.energy/industry-information/industry-data-and-reports/forecast-volumes-and-costs