

**NESO**  
**National Electricity**  
**Transmission**  
**System**  
Status report

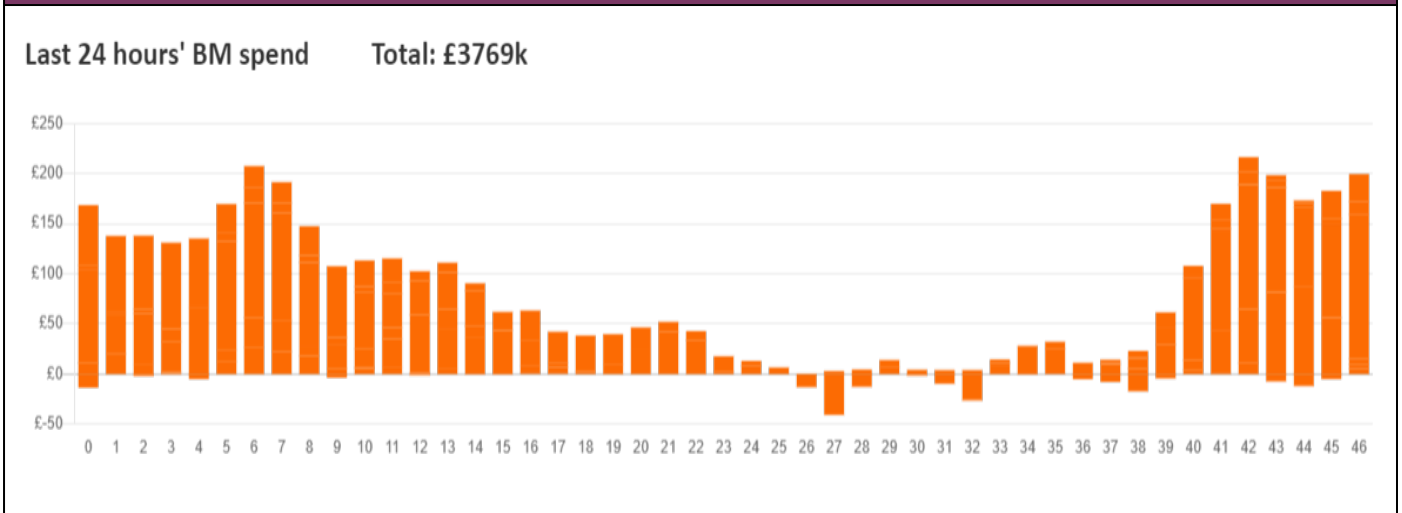


NESO National Electricity Transmission System Status Report  
Tuesday 24 December 2024

Today's High Level Risk Status Forecast for the next 24h			
General Status		Voltage	
Demand		System Inertia	
System Margins		Weather	
Generation		Transmission	
Active Constraints			
<a href="#">System Warning</a>			

<a href="#">Today's Minimum De-Rated Margin</a>	7,435 MW (SP 37)	
Current BMU Largest Loss Risk	Generation	1500MW
	Demand	560MW

Balancing Costs



Yesterday's Market Summary

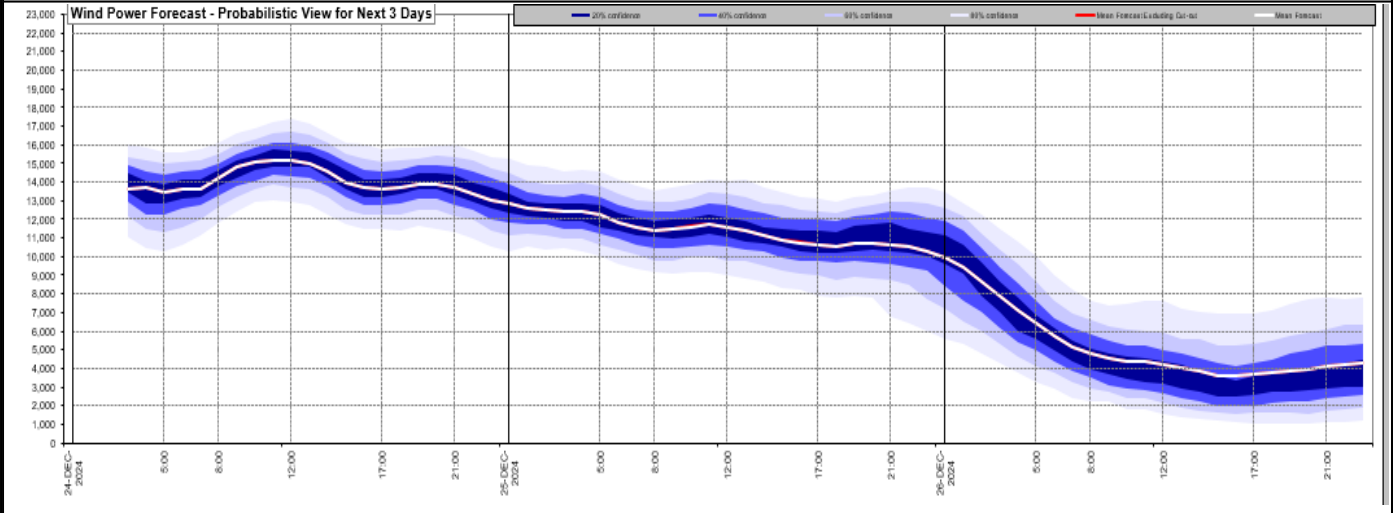
<a href="#">Cash Out Price (Max)</a>	£127.9/MWh (SP 33,36)
<a href="#">Cash Out Price (Min)</a>	£-4/MWh (SP 3,5)
<a href="#">Peak Demand Yesterday</a>	38,530 MW
<a href="#">Minimum Demand</a>	20,200 MW

Interconnector

Net Transfer Capacity (MWs)

Today	Import	Export	Remarks
Netherlands (BritNed)	0	0	Unplanned Outage
France (IFA)	2000	2000	Fully Available
Belgium (Nemo)	1000	1000	Fully Available
Ireland (EWIC)	0	0	Planned outage
France (ElecLink)	0	0	Outage
Northern Ireland (MOYLE)	450	450	Fully Available
Norway (NSL)	1400	1400	Fully Available
France (IFA2)	1000	1000	Fully Available
Viking Link	1430	1430	Fully Available
Ireland (GreenLink)	0	0	Not yet commissioned

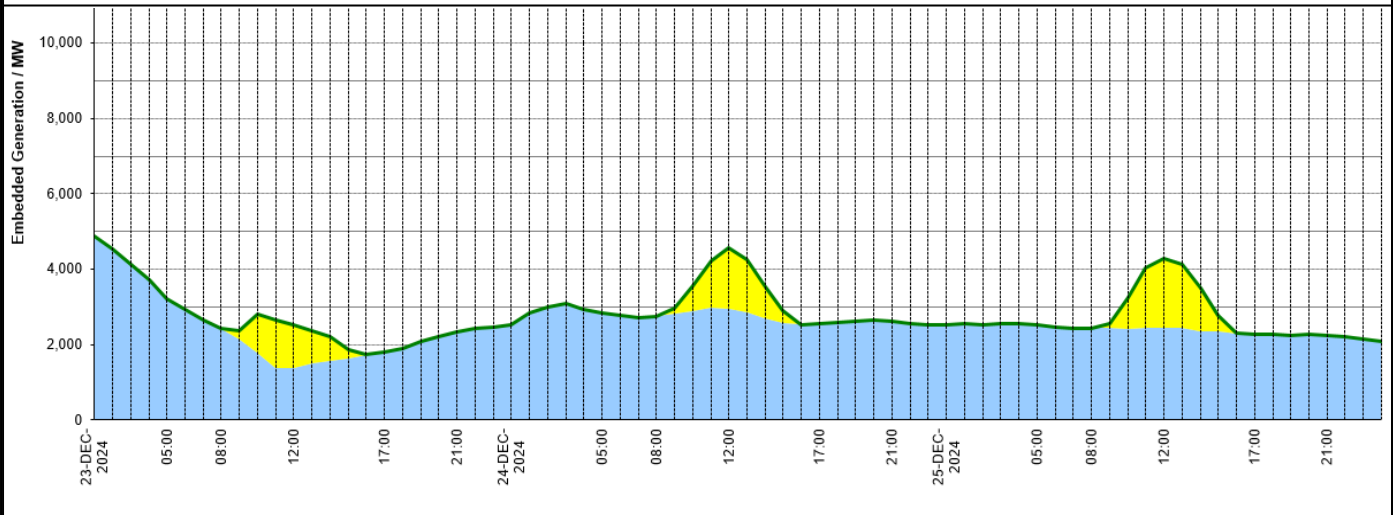
### Wind Power Forecast



### Expected embedded generation (MWs)

#### Embedded Generation Forecast

	23-DEC-2024					24-DEC-2024					25-DEC-2024						
	05:00	08:00	12:00	17:00	21:00	00:00	05:00	08:00	12:00	17:00	21:00	00:00	05:00	08:00	12:00	17:00	21:00
Solar (MW)	0	0	1145	0	0	0	0	0	1608	0	0	0	0	0	1837	0	0
Wind (MW)	3203	2425	1369	1819	2330	2541	2839	2754	2950	2547	2633	2531	2517	2443	2463	2280	2252
STOR (MW)	0	0	0	0	0	0	0	0	0	0	0	0	0	0	0	0	0
<b>Total (MW)</b>	<b>3203</b>	<b>2425</b>	<b>2514</b>	<b>1819</b>	<b>2330</b>	<b>2541</b>	<b>2839</b>	<b>2754</b>	<b>4558</b>	<b>2547</b>	<b>2633</b>	<b>2531</b>	<b>2517</b>	<b>2443</b>	<b>4300</b>	<b>2280</b>	<b>2252</b>



Weather	Source	Commentary
Latest forecast (Summary)	<a href="#">Met Office</a> <a href="#">SEPA</a> <a href="#">Natural Resources Wales</a>	<p><b>Today:</b> A mostly cloudy Christmas Eve, but some brightness developing to the east of high ground. Damp for many initially, but rain becoming mainly confined to the northwest later. Much milder.</p> <p><b>Tonight:</b> A rather cloudy and murky night for many, but turning damp with some patchy rain and drizzle, especially over hills in the west. A milder night for all, but windy in the north.</p>
General Weather Concerns e.g. wind, rain, snow, flooding, GB Weather Warnings	<a href="#">Met Office</a> <a href="#">Weather Warnings</a> <a href="#">SEPA</a> <a href="#">Natural Resources Wales</a>	<p><b>UK Weather Warnings</b> Yellow warning of ice</p> <p>Areas affected: Central, Tayside &amp; Fife   Grampian   Highlands &amp; Eilean Siar</p> <p>Started at: 21:00 GMT on Sun 22 December</p> <p>Ends: 10:00 GMT on Mon 23 December</p>

Weather	Source	Commentary
		<p>Icy patches on untreated surfaces may lead to locally difficult travel conditions overnight and into Monday morning</p> <ul style="list-style-type: none"> <li>- Some injuries from slips and falls on icy surfaces</li> <li>- Probably some icy patches on some untreated roads, pavements and cycle paths</li> </ul> <p><b>Flood Warnings</b></p> <p>0 flood warnings and 21 flood alerts issued for England.</p> <p>1 flood warnings and 0 flood alerts issued for Scotland.</p> <p>0 flood warnings and 0 flood alerts issued for Wales.</p>

Contains public sector information licensed under the Open Government Licence v1.0

Further Information	
BM Reports	<a href="https://www.elexon.co.uk/data/kinnect-insights-solution/">https://www.elexon.co.uk/data/kinnect-insights-solution/</a>
System Balancing Reports	<a href="https://www.neso.energy/industry-information/industry-data-and-reports/system-balancing-reports">https://www.neso.energy/industry-information/industry-data-and-reports/system-balancing-reports</a>
Forecast Volumes and Costs	<a href="https://www.neso.energy/industry-information/industry-data-and-reports/forecast-volumes-and-costs">https://www.neso.energy/industry-information/industry-data-and-reports/forecast-volumes-and-costs</a>