

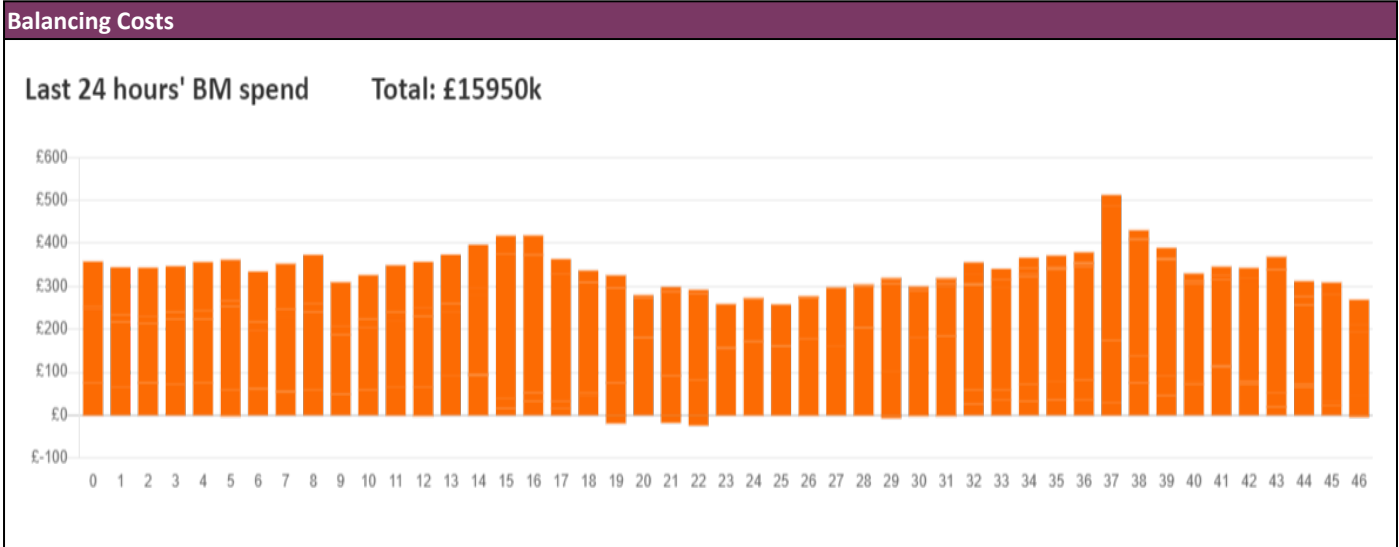
NESO
National Electricity
Transmission
System
Status report



NESO National Electricity Transmission System Status Report
Monday 23 December 2024

Today's High Level Risk Status Forecast for the next 24h			
General Status		Voltage	
Demand		System Inertia	
System Margins		Weather	
Generation		Transmission	
Active Constraints			
System Warning			

Today's Minimum De-Rated Margin	7,180 MW (SP 35)	
Current BMU Largest Loss Risk	Generation	1500MW
	Demand	560MW



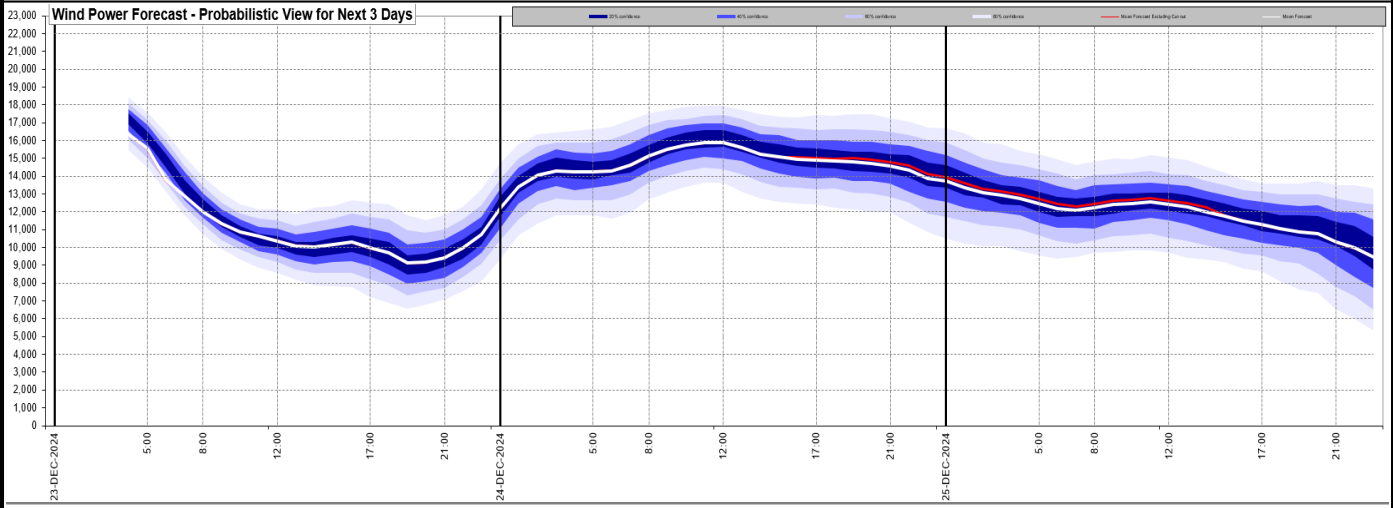
Yesterday's Market Summary

Cash Out Price (Max)	£128/MWh (SP 39)
Cash Out Price (Min)	£-4/MWh (SP 8,9,22,25-28,30)
Peak Demand Yesterday	35,937 MW
Minimum Demand	18,800 MW

Interconnector Net Transfer Capacity (MWs)

Today	Import	Export	Remarks
Netherlands (BritNed)	0	0	Unplanned Outage
France (IFA)	2000	2000	Fully Available
Belgium (Nemo)	1000	1000	Fully Available
Ireland (EWIC)	0	0	Planned outage
France (ElecLink)	0	0	Outage
Northern Ireland (MOYLE)	450	450	Fully Available
Norway (NSL)	1400	1400	Fully Available
France (IFA2)	1000	1000	Fully Available
Viking Link	1430	1430	Fully Available
Ireland (GreenLink)	0	0	Not yet commissioned

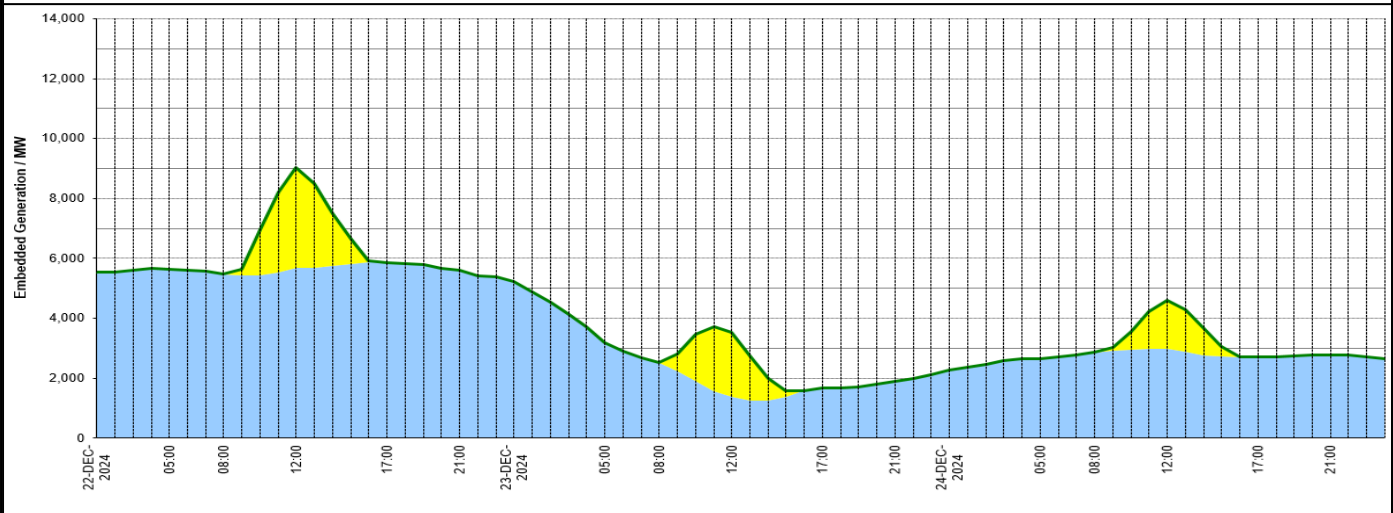
Wind Power Forecast



Expected embedded generation (MWs)

Embedded Generation Forecast

Embedded Generation Estimates													Last run: 23-Dec-2024 04:32:25				
	22-DEC-2024					23-DEC-2024					24-DEC-2024						
	05:00	08:00	12:00	17:00	21:00	00:00	05:00	08:00	12:00	17:00	21:00	00:00	05:00	08:00	12:00	17:00	21:00
Solar (MW)	0	0	3367	0	0	0	0	0	2135	0	0	0	0	0	1635	0	0
Wind (MW)	5653	5473	5678	5861	5620	5217	3183	2517	1383	1687	1906	2265	2668	2868	2979	2701	2781
STOR (MW)	0	0	0	0	0	0	0	0	0	0	0	0	0	0	0	0	0
Total (MW)	5653	5473	9045	5861	5620	5217	3183	2517	3518	1687	1906	2265	2668	2868	4614	2701	2781



Weather	Source	Commentary
Latest forecast (Summary)	Met Office SEPA Natural Resources Wales	<p>Today: Outbreaks of rain and drizzle, accompanied by hill fog, will gradually spread eastwards across western areas throughout Monday. Brighter elsewhere at first but turning cloudier later. Chilly in the east, but turning milder in the west later. Less windy.</p> <p>Tonight: A rather cloudy and murky night for many, with some patchy rain and drizzle, especially over hills in the west. A milder night for all, but windy in the north.</p>
General Weather Concerns e.g. wind, rain, snow, flooding, GB Weather Warnings	Met Office Weather Warnings SEPA Natural Resources Wales	<p>UK Weather Warnings Yellow warning of ice</p> <p>Areas affected: Central, Tayside & Fife Grampian Highlands & Eilean Siar</p> <p>Started at: 21:00 GMT on Sun 22 December</p> <p>Ends: 10:00 GMT on Mon 23 December</p>

Weather	Source	Commentary
		<p>icy patches on untreated surfaces may lead to locally difficult travel conditions overnight and into Monday morning</p> <ul style="list-style-type: none"> - Some injuries from slips and falls on icy surfaces - Probably some icy patches on some untreated roads, pavements and cycle paths <p>Flood Warnings</p> <p>2 flood warnings and 36 flood alerts issued for England.</p> <p>3 flood warnings and 2 flood alerts issued for Scotland.</p> <p>0 flood warnings and 0 flood alerts issued for Wales.</p>

Contains public sector information licensed under the Open Government Licence v1.0

Further Information	
BM Reports	https://www.elexon.co.uk/data/kinnect-insights-solution/
System Balancing Reports	https://www.neso.energy/industry-information/industry-data-and-reports/system-balancing-reports
Forecast Volumes and Costs	https://www.neso.energy/industry-information/industry-data-and-reports/forecast-volumes-and-costs