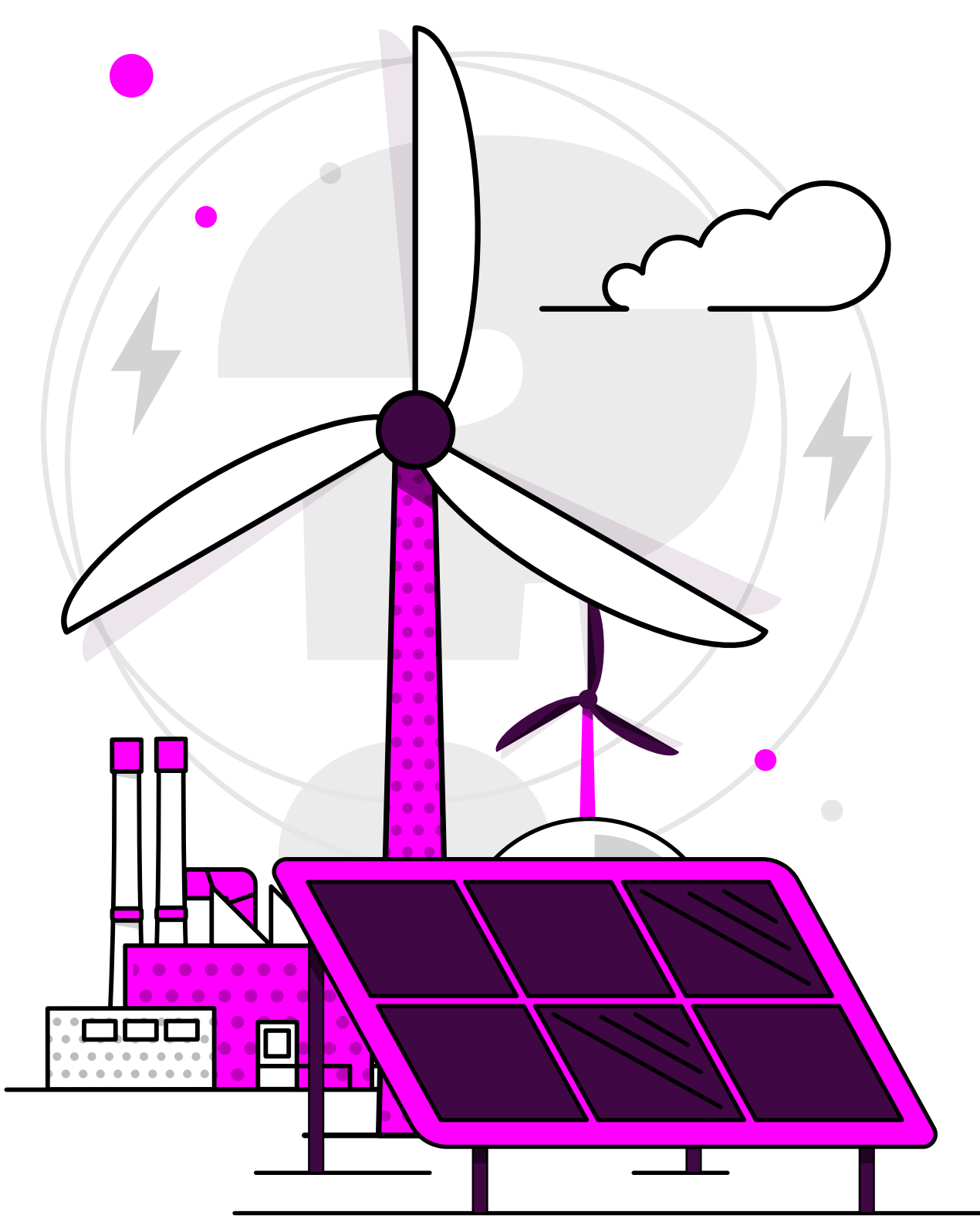


# Britain's Energy Explained: November 2024

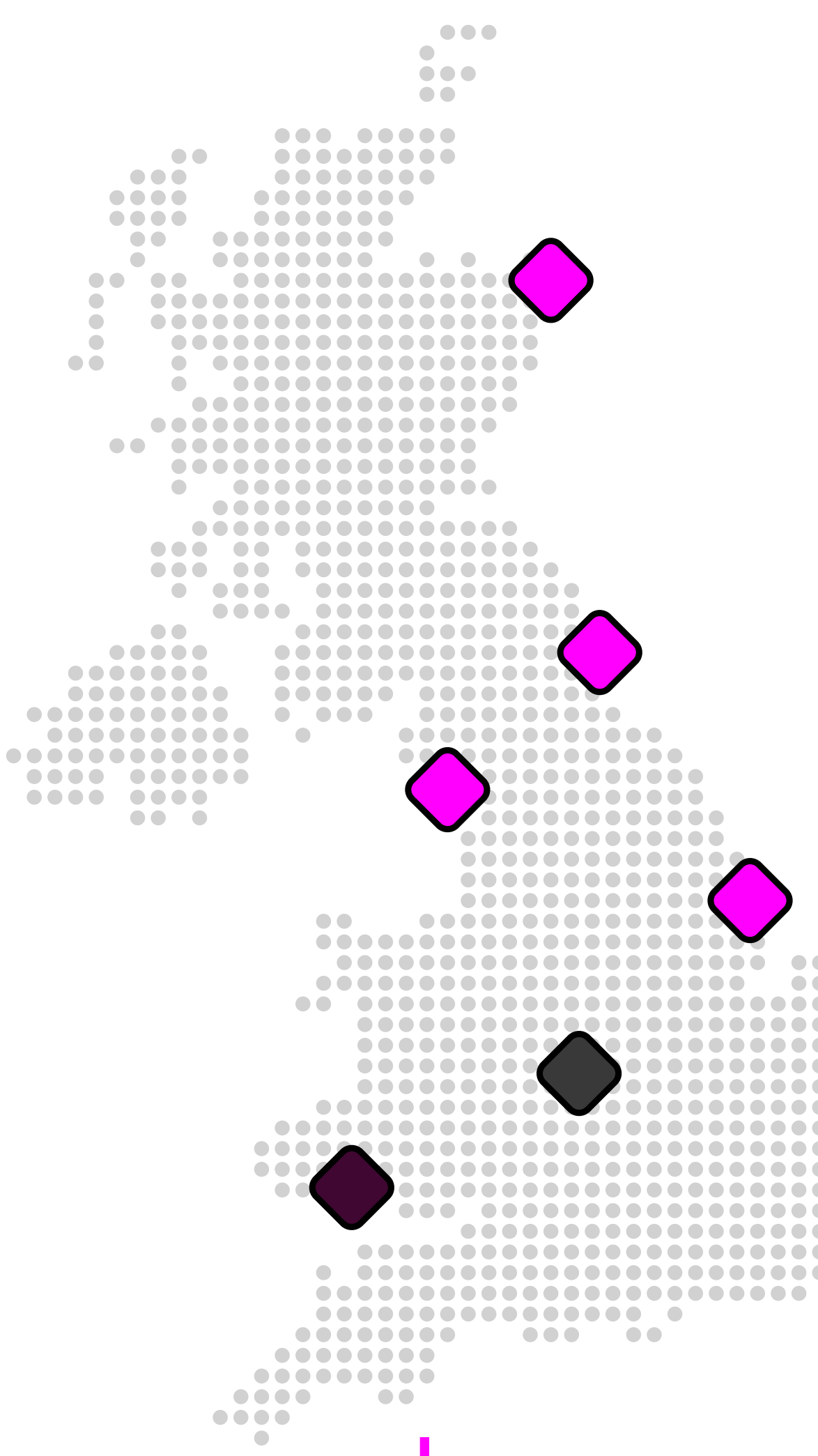


## How was our electricity generated?



Source	Percentage	Change from previous month
Gas	38.3%	8.8% ▲
Wind	26.6%	4.6% ▼
Nuclear	12.2%	1.1% ▼
Biomass	7.3%	0.8% ▼
Coal	0%	0% -
Solar	1.6%	2.1% ▼
Imports	11.3%	0% -
Hydro	1.5%	0.1% ▼
Storage	1.2%	0.1% ▼

## Where has our gas come from?\*



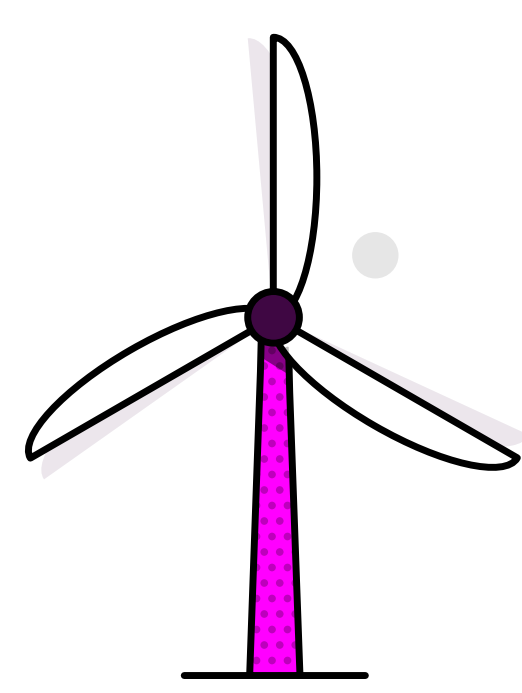
Entry Points	Percentage	Change from previous month
UK/Norwegian gas fields	73%	17% ▼
LNG imports	18%	10% ▲
European imports	1%	1% ▲
Storage withdrawal	8%	6% ▲

## Where is our gas used?

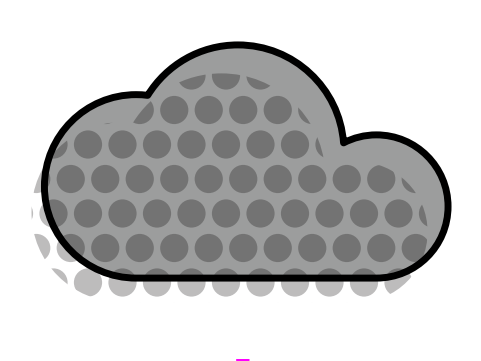
Distribution networks	64%	8% ▲
Power stations	22%	1% ▲
EU & Ireland exports	8%	4% ▼
Industrial	2%	0% -
Storage	4%	5% ▼

\*Gas data is yet to reconcile. For most up-to-date gas data, visit [data.nationalgas.com](https://data.nationalgas.com)

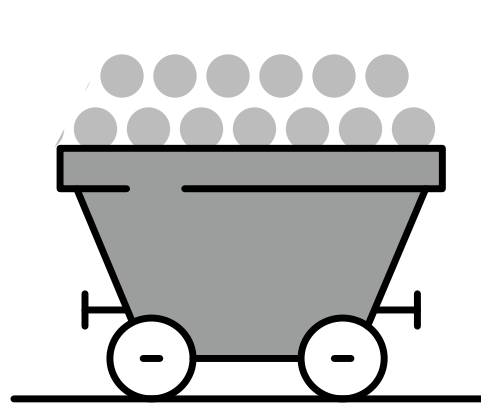
## Carbon intensity of electricity



**Zero carbon** 42% of electricity came from zero carbon sources  
84% peak zero carbon share

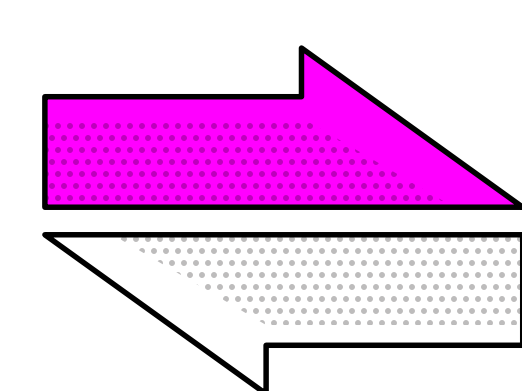


**Carbon intensity** 171 gCO<sub>2</sub>/kWh average  
Greenest time of the month 6am on 24 November



**Coal** 0% use this month  
This time 5 years ago coal usage was 3.8%  
464 consecutive coal free hours

## How much electricity we used



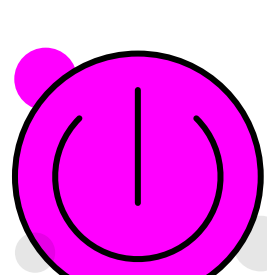
**Imports & exports**



Energy in  
3254 GWh

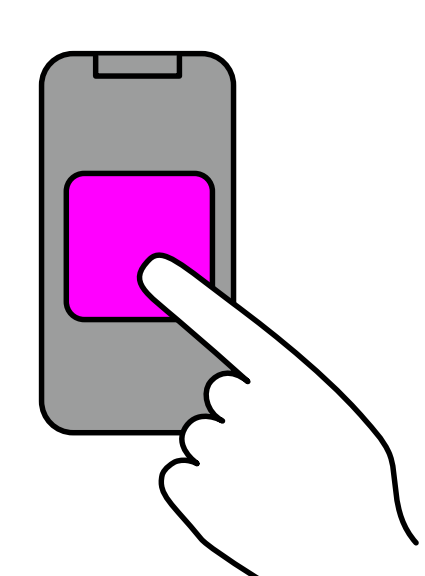
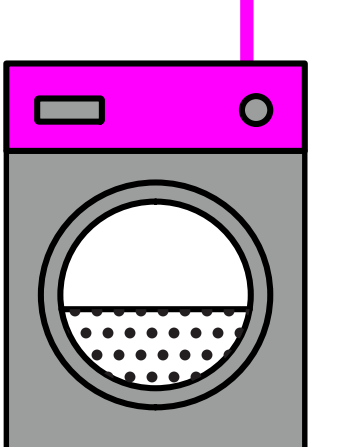


Energy out  
820 GWh



**Demand**

24 TWh run through network (that's 24 billion washing machine cycles).  
Peak demand time was 5pm on 20 November.



**View in real-time**

To view our data in real-time, please download the NESO app for Apple or Android. Or visit [carbonintensity.org.uk](https://carbonintensity.org.uk)