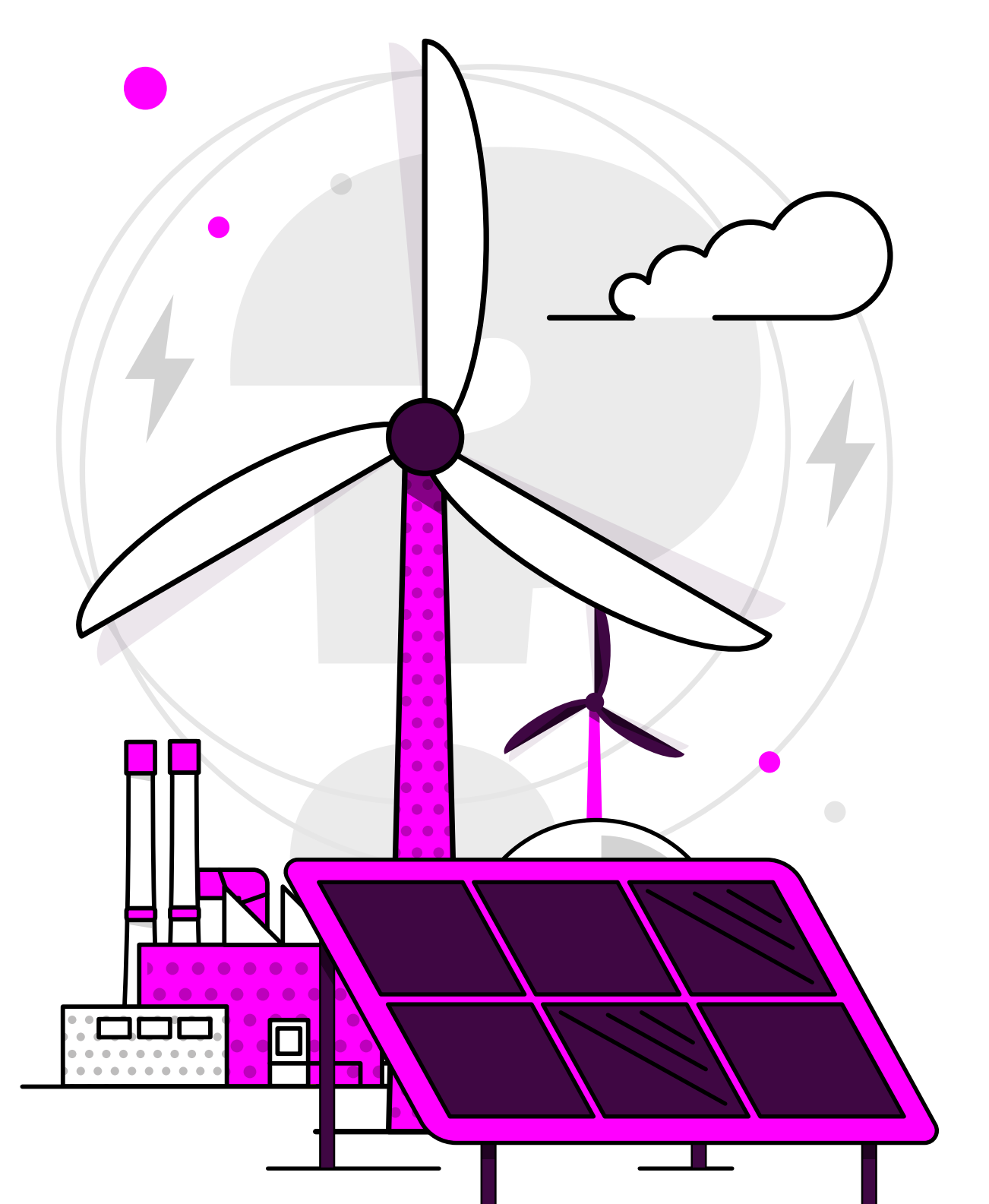


# Britain's Energy Explained: October 2024

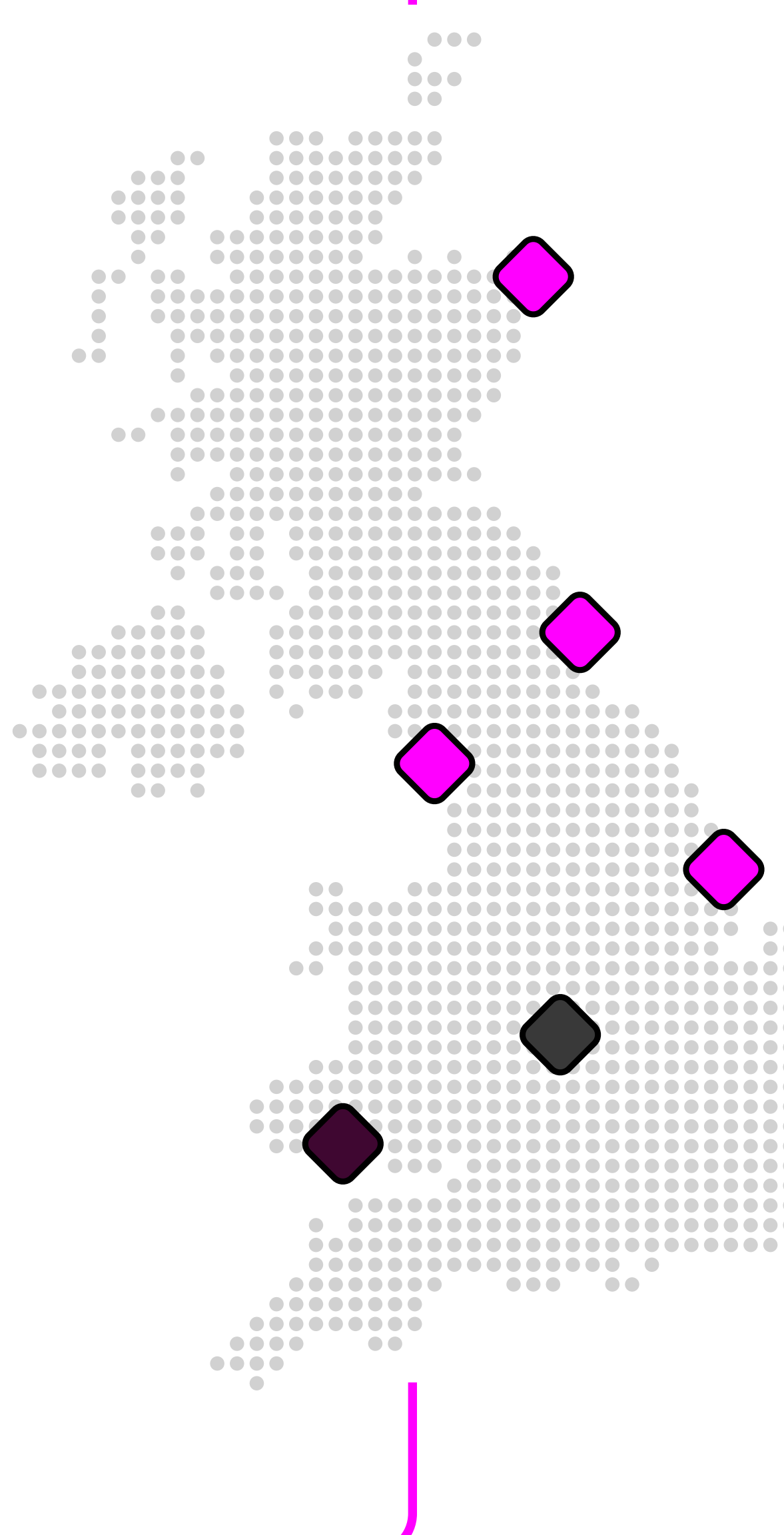


## How was our electricity generated?



Source	Percentage	Change from previous month
Gas	29.5%	4.2% ▲
Wind	31.2%	5% ▲
Nuclear	13.3%	3% ▼
Biomass	8.1%	0.2% ▼
Coal	0%	0.3% ▼
Solar	3.7%	1.9% ▼
Imports	11.3%	3.5% ▼
Hydro	1.6%	0.2% ▼
Storage	1.3%	0.1% ▲

## Where has our gas come from?\*



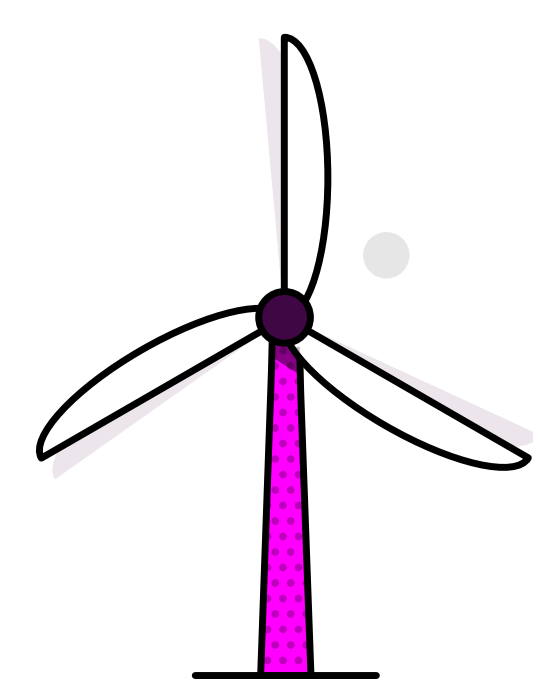
Entry Points	Percentage	Change from previous month
UK/Norwegian gas fields	90%	8% ▲
LNG imports	8%	3% ▲
European imports	0%	0%
Storage withdrawal	2%	11% ▼

## Where is our gas used?

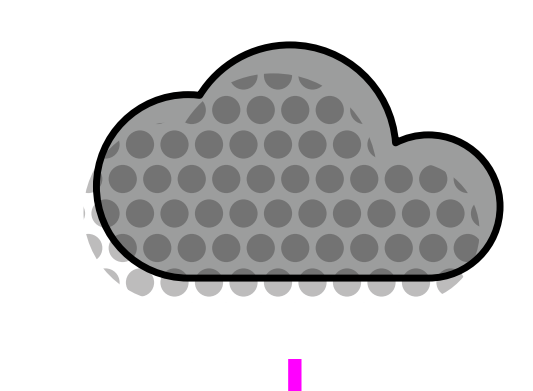
Usage Category	Percentage	Change from previous month
Distribution networks	56%	7% ▲
Power stations	21%	2% ▼
EU & Ireland exports	12%	11% ▼
Industrial	2%	0%
Storage	9%	6% ▲

\*Gas data is yet to reconcile. For most up-to-date gas data, visit [data.nationalgas.com](https://data.nationalgas.com)

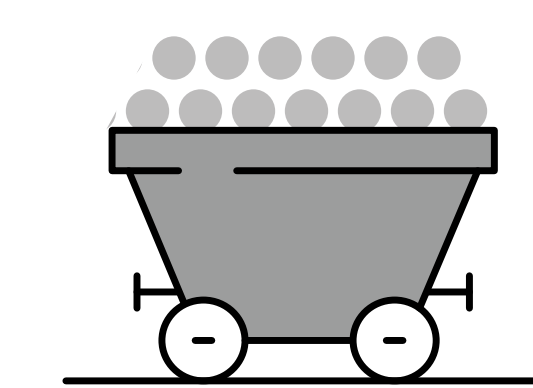
## Carbon intensity of electricity



**Zero carbon** 51% of electricity came from zero carbon sources  
83% peak zero carbon share

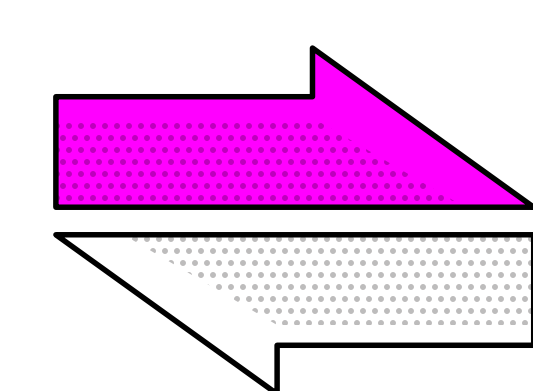


**Carbon intensity** 138 gCO2/kWh average  
🕒 Greenest time of the month 2pm on 5 October

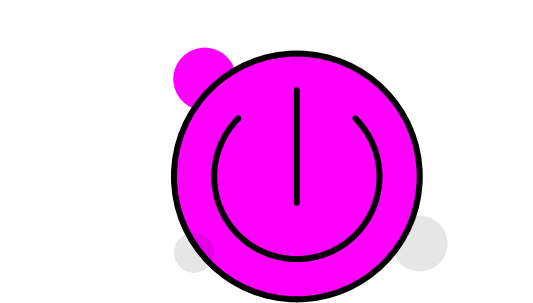


**Coal** 0% use this month  
This time 5 years ago coal usage was 1.3%  
744 consecutive coal free hours

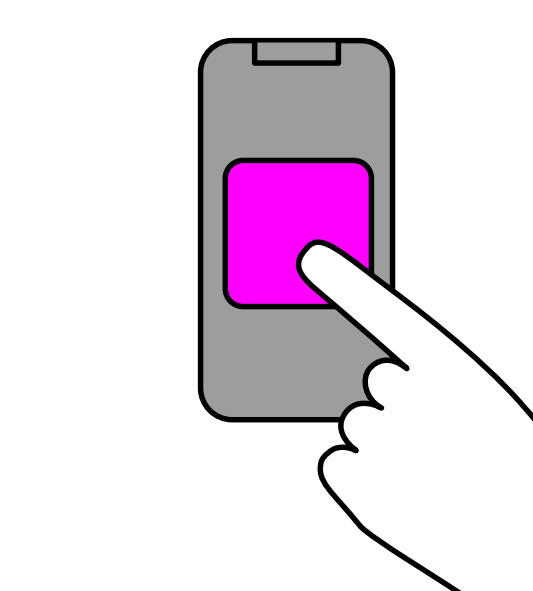
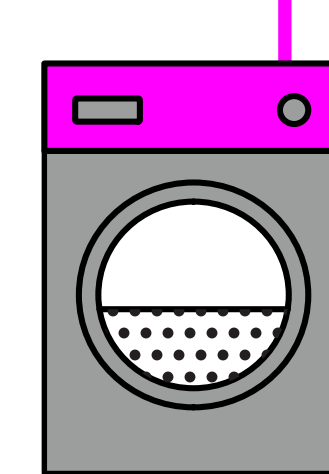
## How much electricity we used



**Imports & exports** Energy in 3155 GWh Energy out 641 GWh



**Demand** 22 TWh run through network (that's 22 billion washing machine cycles).  
Peak demand time was 4pm on 28 October.



**View in real-time** To view our data in real-time, please download the NESO app for Apple or Android. Or visit [carbonintensity.org.uk](https://carbonintensity.org.uk)