

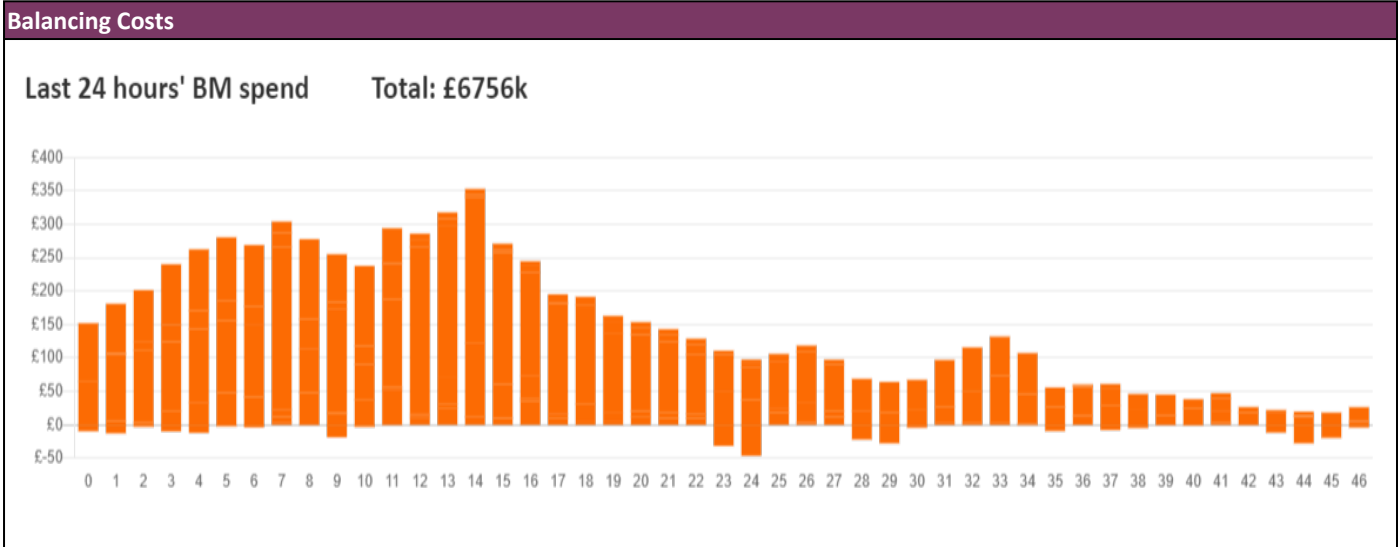
**NESO**  
**National Electricity**  
**Transmission**  
**System**  
Status report



NESO National Electricity Transmission System Status Report  
Tuesday 03 December 2024

Today's High Level Risk Status Forecast for the next 24h			
General Status		Voltage	
Demand		System Inertia	
System Margins		Weather	
Generation		Transmission	
Active Constraints			
<a href="#">System Warning</a>			

<a href="#">Today's Minimum De-Rated Margin</a>	2,482 MW (SP 37)	
Current BMU Largest Loss Risk	Generation	1500 MW
	Demand	560 MW



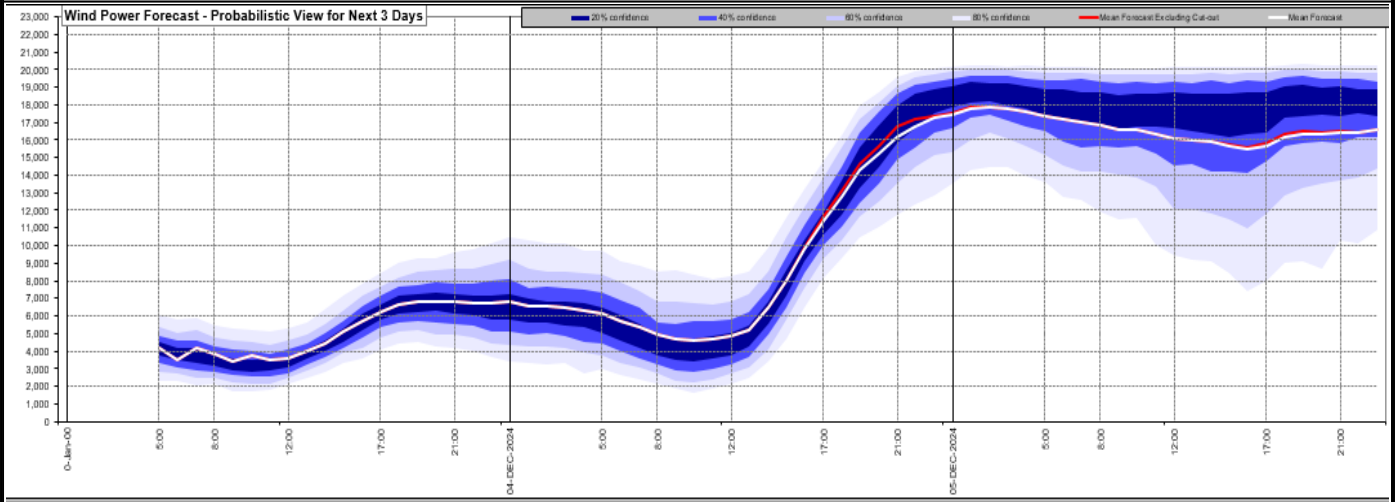
**Yesterday's Market Summary**

<a href="#">Cash Out Price (Max)</a>	£176/MWh (SP 41)
<a href="#">Cash Out Price (Min)</a>	£ 0/MWh (SP 10, SP12)
<a href="#">Peak Demand Yesterday</a>	40,148 MW
<a href="#">Minimum Demand</a>	23,850 MW

**Interconnector Net Transfer Capacity (MWs)**

Today	Import	Export	Remarks
Netherlands (BritNed)	1000	1000	Fully Available
France (IFA)	2000	2000	Fully Available
Belgium (Nemo)	1000	1000	Fully Available
Ireland (EWIC)	500	500	Fully Available
France (ElecLink)	0	0	Outage
Northern Ireland (MOYLE)	450	450	Fully Available
Norway (NSL)	1400	1400	Fully Available
France (IFA2)	1000	1000	Fully Available
Viking Link	1430	1430	Fully Available
Ireland (GreenLink)	0	0	Not yet commissioned

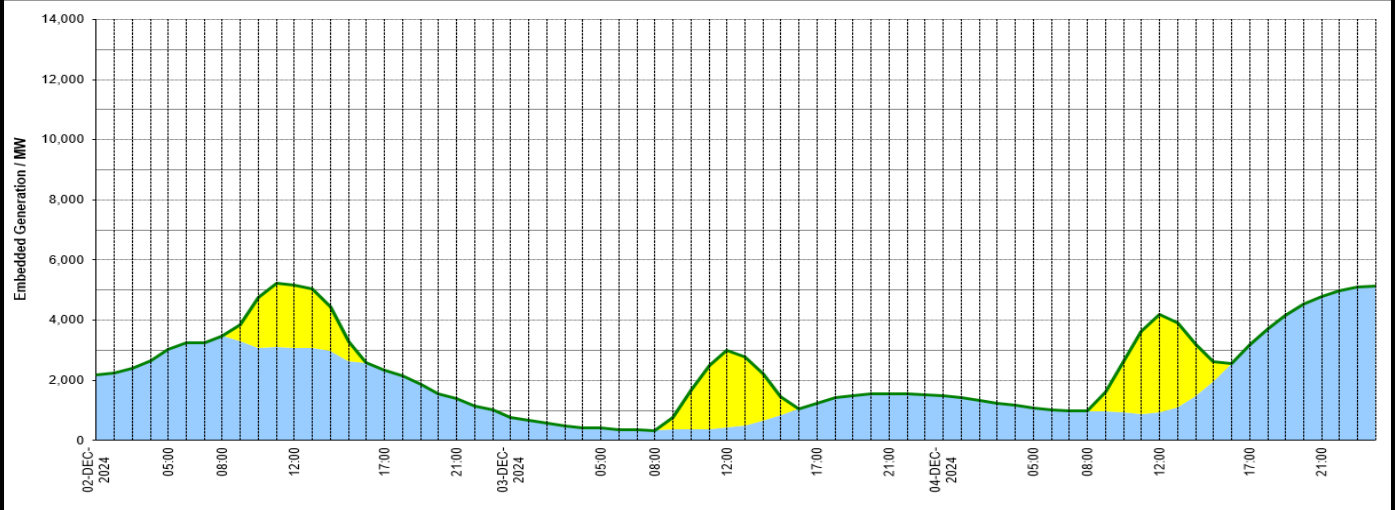
### Wind Power Forecast



### Expected embedded generation (MWs)

#### Embedded Generation Forecast

Embedded Generation Estimates																Last run: 03-DEC-2024 04:31:52	
	02-DEC-2024					03-DEC-2024					04-DEC-2024						
	05:00	08:00	12:00	17:00	21:00	00:00	05:00	08:00	12:00	17:00	21:00	00:00	05:00	08:00	12:00	17:00	21:00
Solar (MW)	0	0	2087	0	0	0	0	0	2562	0	0	0	0	0	3247	0	0
Wind (MW)	3033	3484	3089	2337	1404	763	415	340	423	1246	1567	1490	1084	980	942	3202	4799
STOR (MW)	0	0	0	0	0	0	0	0	0	0	0	0	0	0	0	0	0
<b>Total (MW)</b>	<b>3033</b>	<b>3484</b>	<b>5176</b>	<b>2337</b>	<b>1404</b>	<b>763</b>	<b>415</b>	<b>340</b>	<b>2985</b>	<b>1246</b>	<b>1567</b>	<b>1490</b>	<b>1084</b>	<b>980</b>	<b>4189</b>	<b>3202</b>	<b>4799</b>



Weather	Source	Commentary
Latest forecast (Summary)	<a href="#">Met Office</a> <a href="#">SEPA</a> <a href="#">Natural Resources Wales</a>	<p><b>Today:</b> Tuesday will be dry, bright and cold across England and Wales. A dry and cold start further north too, but rain will arrive into Northern Ireland and northern Scotland around lunchtime, turning to snow across the hills in Scotland.</p> <p><b>Tonight:</b> Rain will move into northern England for a time this evening, before fading away. Largely dry elsewhere with just a few showers in the north and west. Cold and frosty.</p>
General Weather Concerns e.g. wind, rain, snow, flooding, GB Weather Warnings	<a href="#">Met Office</a> <a href="#">Weather Warnings</a> <a href="#">SEPA</a> <a href="#">Natural Resources Wales</a>	<p><b>UK Weather Warnings</b> No weather warnings are in force for the UK.</p> <p><b>Flood Warnings</b> 0 severe flood warning, 12 flood warnings and 57 flood alerts issued for England. 0 severe flood warning, 0 flood warnings and 0 flood alerts issued for Scotland. 0 severe flood warning, 0 flood warnings and 1 flood alerts issued for Wales.</p>

Further Information	
BM Reports	<a href="https://www.elexon.co.uk/data/kinnect-insights-solution/">https://www.elexon.co.uk/data/kinnect-insights-solution/</a>
System Balancing Reports	<a href="https://www.neso.energy/industry-information/industry-data-and-reports/system-balancing-reports">https://www.neso.energy/industry-information/industry-data-and-reports/system-balancing-reports</a>
Forecast Volumes and Costs	<a href="https://www.neso.energy/industry-information/industry-data-and-reports/forecast-volumes-and-costs">https://www.neso.energy/industry-information/industry-data-and-reports/forecast-volumes-and-costs</a>