

Public

You have been joined in listen only mode with your camera turned off

Live captioning is available in Microsoft Teams

- Click on the 3 dots icon / 'More'
- Click 'Turn on live captions'

# NESO Operational Transparency Forum

27 November 2024

# Introduction | Sli.do code #OTF

Slido code #OTF

To ask questions live & give us post event feedback go to Sli.do event code #OTF.

- **Ask your questions as early as possible** as our experts may need time to ensure a correct answer can be given live.
- **Please provide your name or organisation.** This is an operational forum for industry participants therefore questions from unidentified parties will not be answered live. If you have reasons to remain anonymous to the wider forum, please use the advance question or email options below.
- **The OTF is not the place to challenge the actions of individual parties** (other than the NESO), and we will not comment on these challenges. This type of concern can be reported to the Market Monitoring team at: [marketreporting@nationalenergyso.com](mailto:marketreporting@nationalenergyso.com)
- **Questions will be answered in the upvoted order whenever possible.** We will take questions from further down the list when: the answer is not ready; we need to take the question away or the topic is outside of the scope of the OTF.
- **Sli.do will remain open until 12:00**, even when the call closes earlier, to provide the maximum opportunity for you to ask questions. After that please use the advance questions or email options below.
- **All questions will be recorded and published.** Questions which are not answered on the day will be included, with answers, in the slide pack for the next OTF.
- **Ask questions in advance** (before 12:00 on Monday) at: <https://forms.office.com/r/k0AEfKnai3>
- **Ask questions anytime** whether for inclusion in the forum or individual response at: [box.nc.customer@nationalenergyso.com](mailto:box.nc.customer@nationalenergyso.com)

**Stay up to date on our webpage:** <https://www.neso.energy/what-we-do/systems-operations/operational-transparency-forum> (OTF Q&A is published with slide packs)

# Future deep dive / focus topics

Slido code #OTF

## Today's focus topics

NESO response to Storm Bert (high level)

NESO Data Sharing Approach

## Future

NESO's next RIIO-2 Business Plan (BP3): Consultation launch – 4 December

Early November Dunkelflaute and costs impacts – 4 December

Strategic Energy Planning – 11 December

Initial National Demand Outturn – TBC

If you have suggestions for future deep dives or focus topics, please send them to us at:  
[box.nc.customer@nationalenergyso.com](mailto:box.nc.customer@nationalenergyso.com) and we will consider including them in a future forum

# DFS goes live today

Slido code #OTF

Demand Flexibility Service (DFS) goes live from 27 November 2024.

Back for a third year, DFS enables households and businesses to participate in the electricity market.

We can use DFS when we are short of positive margin. We'll compare it to alternative actions, like interconnector trades and BM actions.

## Key changes to DFS

- Not an enhanced action, but competing as an in-merit service
- Year-round service, not just winter
- Stackable with the Capacity Market and DNO Flexibility Services
- Performance incentives for accurate delivery
- Within day procurement only (no day-ahead)

# Quick Reserve phase 1

Slido code #OTF

- EAC platform now open for bids in the new Quick Reserve (QR) market
- First auction will run on 3 December at 1400 co-optimised with our response services
- The service terms and other legal document can be found on the [how to participate](#) section of our website.
- **Procurement volume update** - QR requirement for positive will be flat circa 500MW across all service windows except for overnight windows (23:30 – 05:30) when the requirement is going to be reduced circa to 300MW. QR Requirement for negative will be flat circa 300MW across all Service Windows. [Auction requirements](#)

# Balancing Reserve Requirement updates

Slido code #OTF

- To align with the launch of Quick Reserve we have updated the procurement strategy for Balancing Reserve.
- The medium-term forecast dataset on the data portal has been updated with the full details: [Balancing Reserve Requirements Medium term forecast | National Energy System Operator](#)
- The changes will go live for the auction on the 3<sup>rd</sup> December with delivery from 23:00 on the 3<sup>rd</sup> December.
- For Positive Balancing Reserve (BR) we have increased the overall volume in the auction and added shape to the requirement.
- For Negative BR we have increased the volume to the full baseline requirement.
- **However, we do not see value in routine firm procurement of NBR over winter. We will continue to place the volume in the auction but will apply a £0 price when we don't expect value in procuring firm.**

# Battery Storage Forum Event

Slido code #OTF

We will be holding a Battery Storage Forum event on **04 December 2024**.

This will be the inaugural event for this forum and will be facilitated by NESO leaders and technical experts. It will provide an opportunity for open and collaborative discussions, and solutioneering.

## Date & location details:

**Date:** 04 December 2024, expected timings 09:30-17:00

**Location:** Warwick, further information provided with attendance confirmation

## Attendance & who this forum is suited for:

This event is specifically tailored for professionals closely involved in dispatch efficiency and battery storage, and it follows on from the recent LCP methodology webinar. If you are interested in attending, please contact us by email - [Box.Battery-Storage-Strategy@uk.nationalenergyso.com](mailto:Box.Battery-Storage-Strategy@uk.nationalenergyso.com) - by the end of **Wednesday 27 November (today)**. Please note that attendance will be subject to availability.



We will be publishing content from this forum on our website after the event for those who are not able to attend.

# Future of registration

- We are changing the way we manage Registrations for the Balancing Mechanism (BM). Early in the new year the process will be moving to the Single Markets Platform (SMP). This will bring BM Registration in line with Balancing Services and enable customers to input and update their unit data directly.
- To register for updates on progress and/or the Webinar 23 January please follow the link below:

[Register](#)

[Future of registration](#)

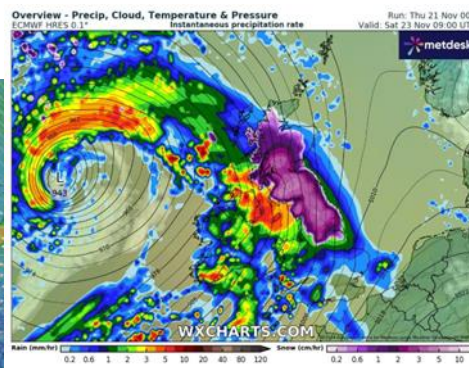
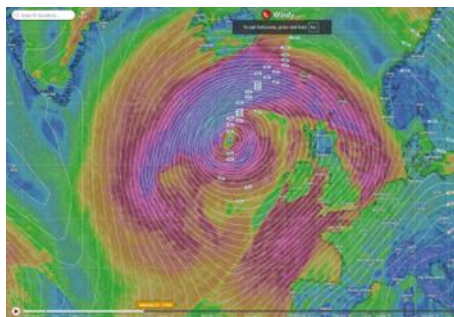


# Future Event Summary

Event	Date & Time	Link
Balancing Programme Event	27 November (9:30am-4:30pm)	<a href="#">Sign up</a> 
FRCR 2025 Webinar – 1: Framework and Methodology	27 November 2024 (1:30 – 2:30pm)	<a href="#">Sign up</a> Sign up links will also be shared via SQSS mailbox.
BSUoS Update Webinar	28 November (1pm-2pm)	<a href="#">Sign up</a>
Battery Storage Forum	<b>Registration deadline: Wednesday (today), 27/11/2024</b>  04 December, expected timings (9:30am-5:00pm)	Email: <a href="mailto:Box.Battery-Storage-Strategy@uk.nationalenergygyso.com">Box.Battery-Storage-Strategy@uk.nationalenergygyso.com</a>
FRCR 2025 Webinar – 2: Model and Data	11 December 2024 (1:30 – 2:30pm)	<a href="#">Sign up</a> Sign up links will also be shared via SQSS mailbox.
Future of Registration webinar	23 January 2025	<a href="#">Register here</a>

# NESO response to Storm Bert

# Timeline



Slido code #OTF

**Tuesday**  
**19/11/2024:**  
NESO teams monitoring weather forecast informed ENCC there could be a potential storm that would likely affect Great Britain over the weekend.

**Wednesday**  
**20/11/2024:**  
The potential storm was discussed during the internal daily ENCC call and the relevant support team agreed to review the need for contingency plans.

**Thursday 21/11/2024:**  
Met Office named storm Bert and weather warnings were in place.  
  
ENCC and support teams discussed Storm Bert scenarios during Weekend & Weekly Strategy meeting.  
  
Decision was made to delay certain outages to minimise risks to the power system.  
  
It was also confirmed the forecast margin for weekend would be adequate and contingency plan would not be needed.  
  
Forecast team provided extra information about the storm and indicated that it would be the most powerful storm in or near GB since Oct 1987, but the impact would be less severe because the path was different, and the storm centre would be far away in Atlantic.

**Saturday to**  
**Sunday**  
**23/11/2024 –**  
**24/11/2024:**  
ENCC and support team continued monitoring the system status and weather warning as well as forecasting the day ahead margin to ensure normal system operation.

**Monday onwards**  
**25/11/2024:**  
ENCC continues monitoring flood warnings, ready to liaise with Transmission Owners in the event of a risk to transmission assets.

[Managing Storm Conditions Webinar \(6 Mar 24\)](#)

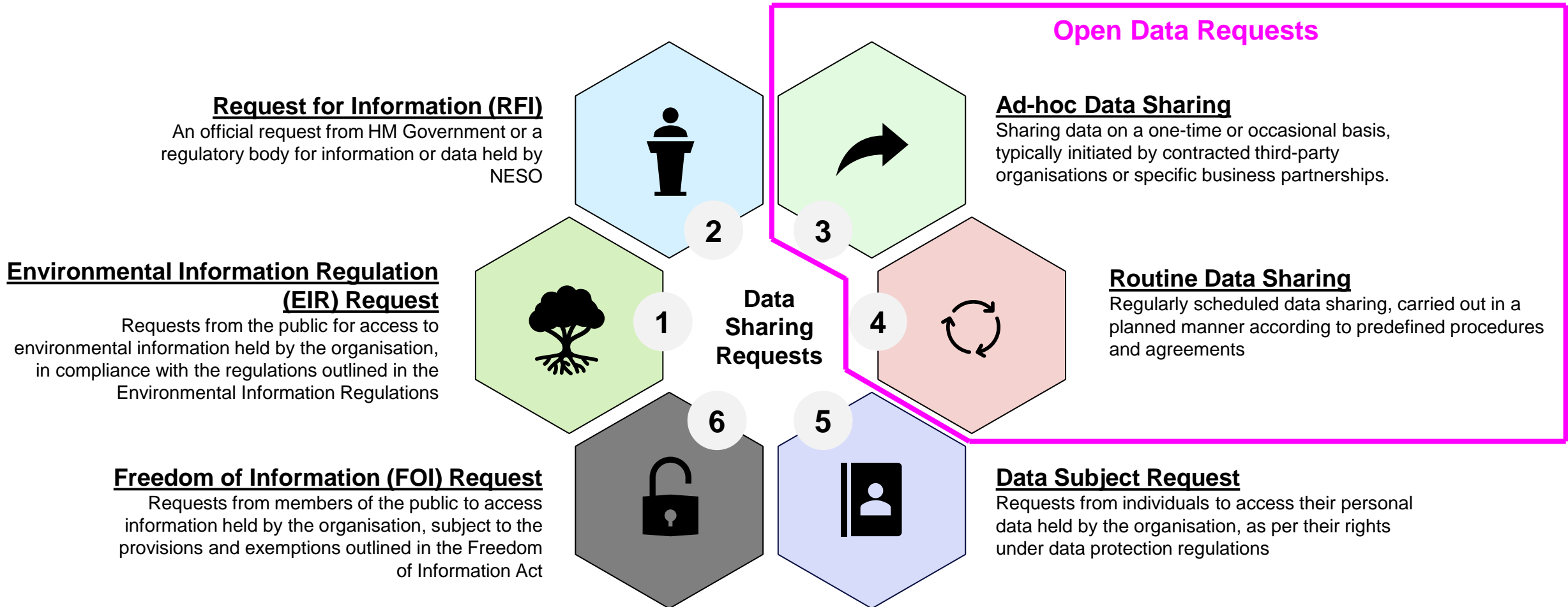
Public

# Data Sharing – Open Data

Data Sharing Team – [opendata@nationalenergyso.com](mailto:opendata@nationalenergyso.com)

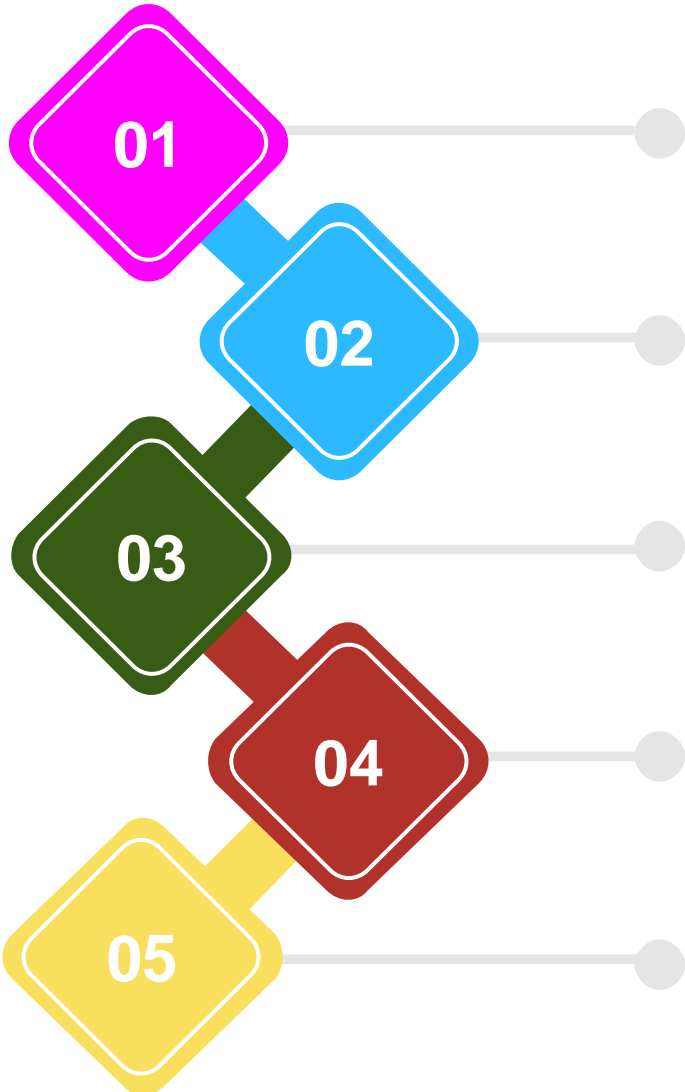
27/11/2024

# Data Sharing Requests – NESO will assign data sharing requests into the following categories, each with its own process tailored to specific requirements



\*The term data encompasses structured forms, such as tables of data, as well as unstructured forms, such as reports.

# End-To-End Process – To request for Open Data from NESO, please complete the Data Sharing Request Form available on NESO’s website



## REQUEST

A request for data is raised through the form available on [NESO's website](#)

## REVIEW

NESO will review the data request to:

- Ensure the request is for new data that doesn't currently exist on the Data Portal
- Identify if the data exists within NESO
- Perform an initial triage of the data to determine if it is NESO's data to share
- Evaluate if the data does not exist as a dataset and needs to be extracted, assessing the effort/cost to NESO versus the benefit to the industry

## TRIAGE

The data is then triaged to identify any constraints or limitations, including legal restrictions that may prohibit sharing certain data. Additionally, we will evaluate the risks associated with sharing the data

## ASSURE

The triage is reviewed to ensure the accuracy and completeness of the assessment. Where high risks are identified with specific data, the appropriate risk specialist is consulted. These specialists include Security, Resilience & Emergency Management, Legal, Markets, and others

## SHARE

Once the data is confirmed to be Open, the internal data team will work on planning, creating and executing an implementation plan for this data to be published on NESO's Data Portal

## FUTURE DATA SHARING TRANSPARENCY ACTIVITIES

**Proactive Data Sharing** - NESO will review its data and share as Open where possible

Start Date  
Jan 2025

**Searchable Centralised Data Catalogue** – A limited register of NESO's data

Planned Delivery  
Sep 2025

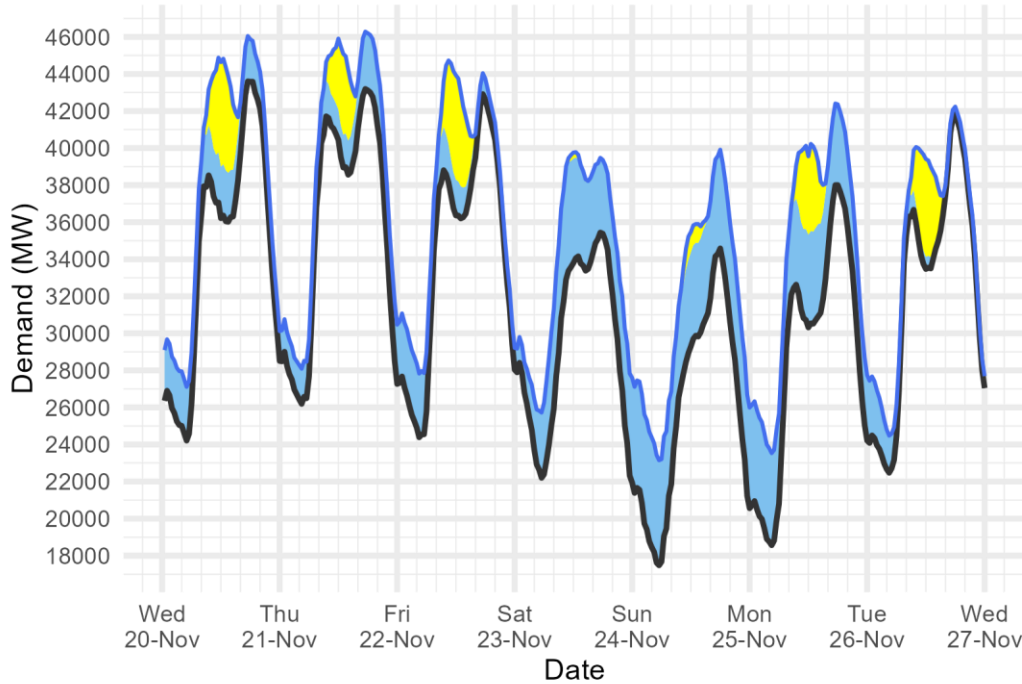
**Data Sharing Infrastructure** – Creating the common data sharing infrastructure

Pilot in progress

# Demand | Last week demand out-turn

Slido code #OTF

NESO National Demand outturn 20-26 November 2024



Demand type

- National Demand (ND) transmission connected generation requirement within GB
- ND + est. of PV & wind at Distribution network

Renewable type

- Distributed\_PV
- Distributed\_Wind

Distributed generation

Peak values by day

Date	OUTTURN	
	Daily Max Dist. PV (GW)	Daily Max Dist. Wind (GW)
20 Nov 2024	5.7	2.9
21 Nov 2024	4.3	3.2
22 Nov 2024	5.6	3.6
23 Nov 2024	0.3	5.9
24 Nov 2024	1.2	5.9
25 Nov 2024	4.7	5.4
26 Nov 2024	5.3	3.4

National Demand

Peaks and troughs

Date	Forecasting Point	FORECAST (Wed 20 Nov)		OUTTURN			
		National Demand (GW)	Dist. wind (GW)	National Demand (GW)	Triad Avoidance est. (GW)	N. Demand adjusted for TA (GW)	Dist. wind (GW)
20 Nov 2024	Evening Peak	42.5	2.6	43.6	0.0	43.6	2.4
21 Nov 2024	Overnight Min	25.5	1.9	26.2	n/a	n/a	1.9
21 Nov 2024	Evening Peak	43.2	2.4	43.2	0.0	43.2	3.1
22 Nov 2024	Overnight Min	24.0	3.2	24.4	n/a	n/a	3.4
22 Nov 2024	Evening Peak	42.3	1.4	42.9	0.0	42.9	1.1
23 Nov 2024	Overnight Min	23.6	2.3	22.2	n/a	n/a	3.5
23 Nov 2024	Evening Peak	35.8	5.2	35.4	0.0	35.4	4.0
24 Nov 2024	Overnight Min	17.1	5.4	17.5	n/a	n/a	5.7
24 Nov 2024	Evening Peak	33.6	5.3	34.6	0.0	34.6	5.3
25 Nov 2024	Overnight Min	18.4	4.4	18.6	n/a	n/a	5.0
25 Nov 2024	Evening Peak	38.9	3.2	38.0	0.0	38.0	4.4
26 Nov 2024	Overnight Min	22.0	2.1	22.5	n/a	n/a	2.0
26 Nov 2024	Evening Peak	41.2	1.2	41.8	0.0	41.8	0.4

The black line (National Demand ND) is the measure of portion of total GB customer demand that is supplied by the transmission network.

ND values do not include export on interconnectors or pumping or station load

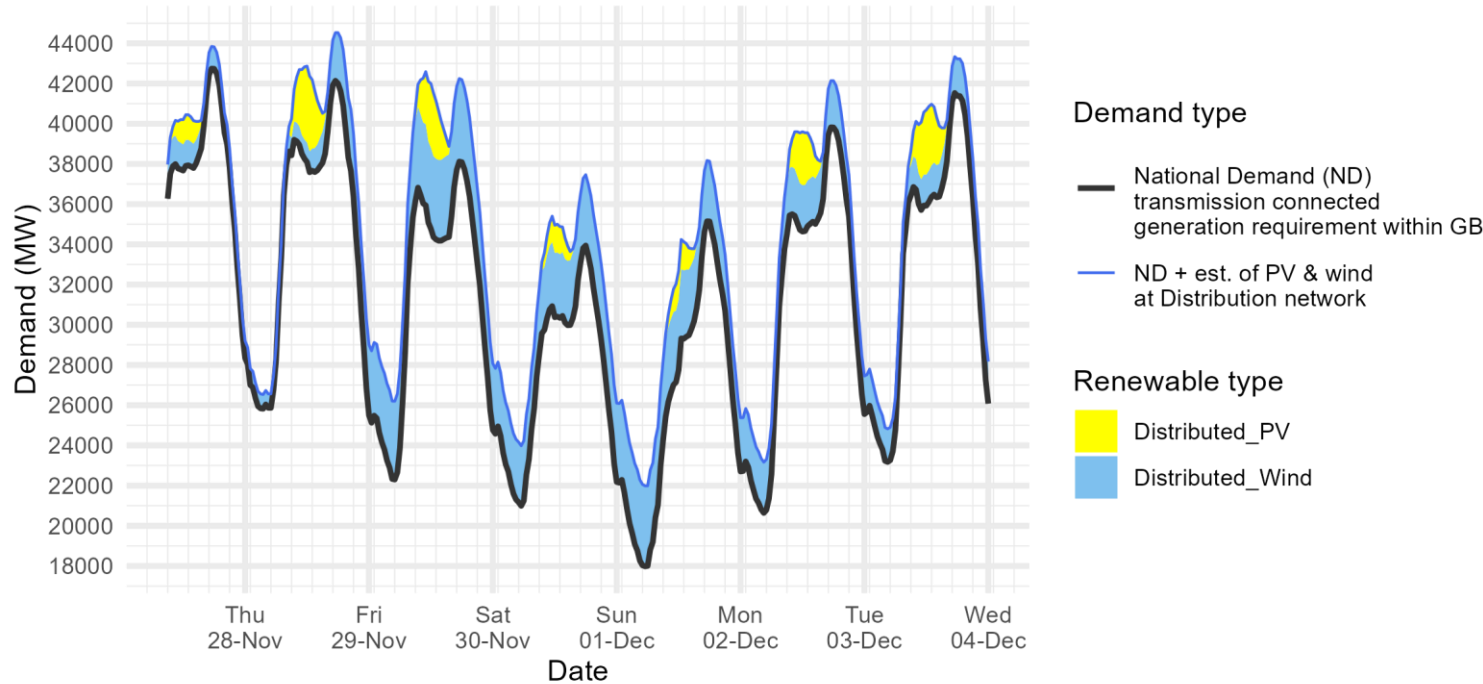
Blue line serves as a proxy for total GB customer demand. It includes demand supplied by the distributed wind and solar sources, but it does not include demand supplied by non-weather driven sources at the distributed network for which NESO has no real time data.

Historic out-turn data can be found on the [NESO Data Portal](#) in the following data sets: [Historic Demand Data](#) & [Demand Data Update](#)

# Demand | Week Ahead

Slido code #OTF

NESO Demand forecast for 27 November-03 December 2024



The black line (National Demand ND) is the measure of portion of total GB customer demand that is supplied by the transmission network.

ND values do not include export on interconnectors or pumping or station load

Blue line serves as a proxy for total GB customer demand. It includes demand supplied by the distributed wind and solar sources, but it does not include demand supplied by non-weather driven sources at the distributed network for which NESO has no real time data.

Historic out-turn data can be found on the [NESO Data Portal](#) in the following data sets: [Historic Demand Data](#) & [Demand Data Update](#)

## National Demand Peaks and troughs

Date	Forecasting Point	FORECAST (Wed 27 Nov)	
		National Demand (GW)	Dist. wind (GW)
27 Nov 2024	Evening Peak	42.7	1.1
28 Nov 2024	Overnight Min	25.8	0.7
28 Nov 2024	Evening Peak	42.1	2.4
29 Nov 2024	Overnight Min	22.3	3.9
29 Nov 2024	Evening Peak	38.1	4.1
30 Nov 2024	Overnight Min	21.0	3.0
30 Nov 2024	Evening Peak	33.9	3.5
01 Dec 2024	Overnight Min	18.0	4.0
01 Dec 2024	Evening Peak	35.1	3.0
02 Dec 2024	Overnight Min	20.6	2.5
02 Dec 2024	Evening Peak	39.8	2.3
03 Dec 2024	Overnight Min	23.2	1.6
03 Dec 2024	Evening Peak	41.5	1.8

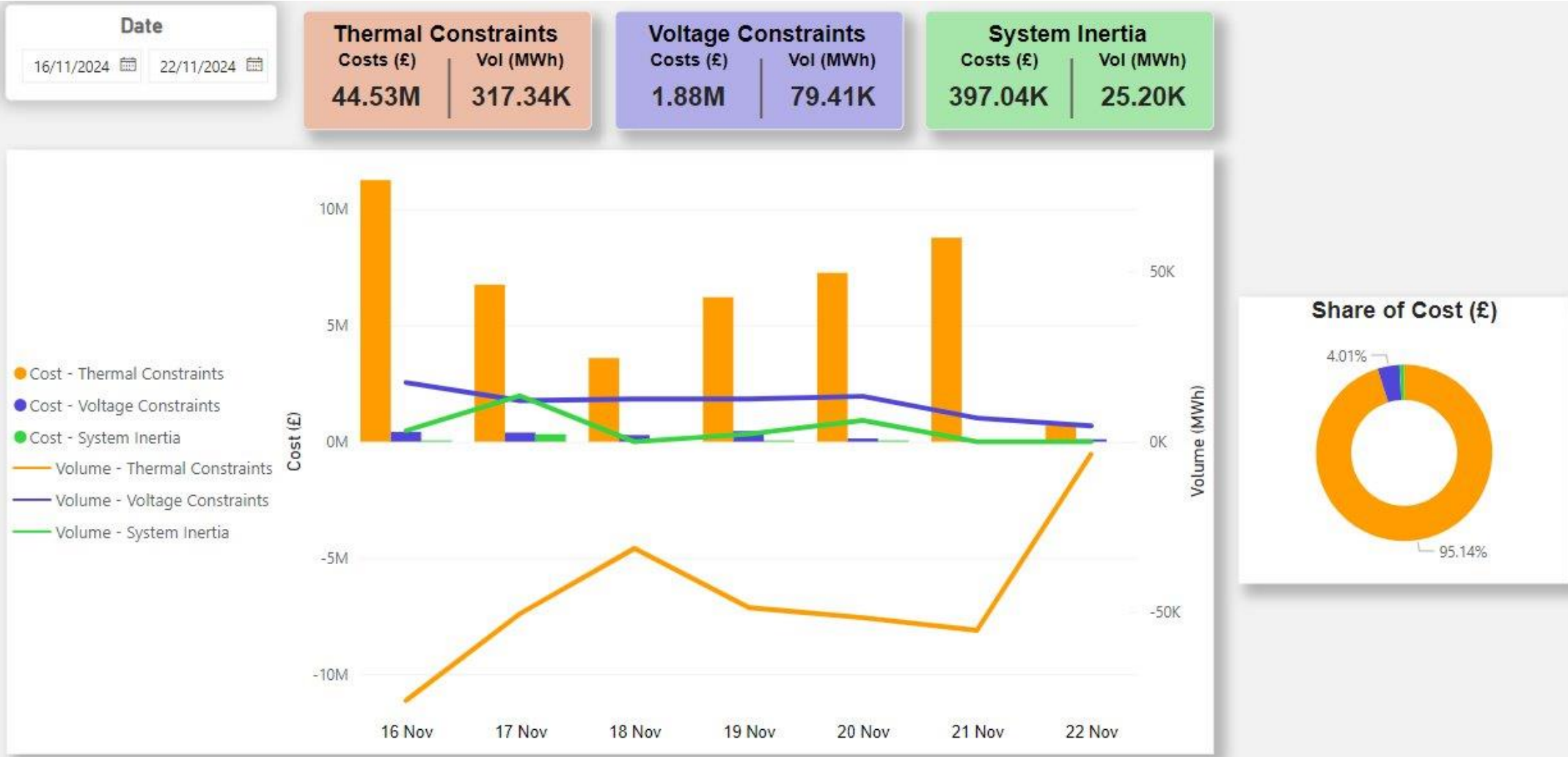


# NESO Actions | Category Cost Breakdown



# NESO Actions | Constraint Cost Breakdown

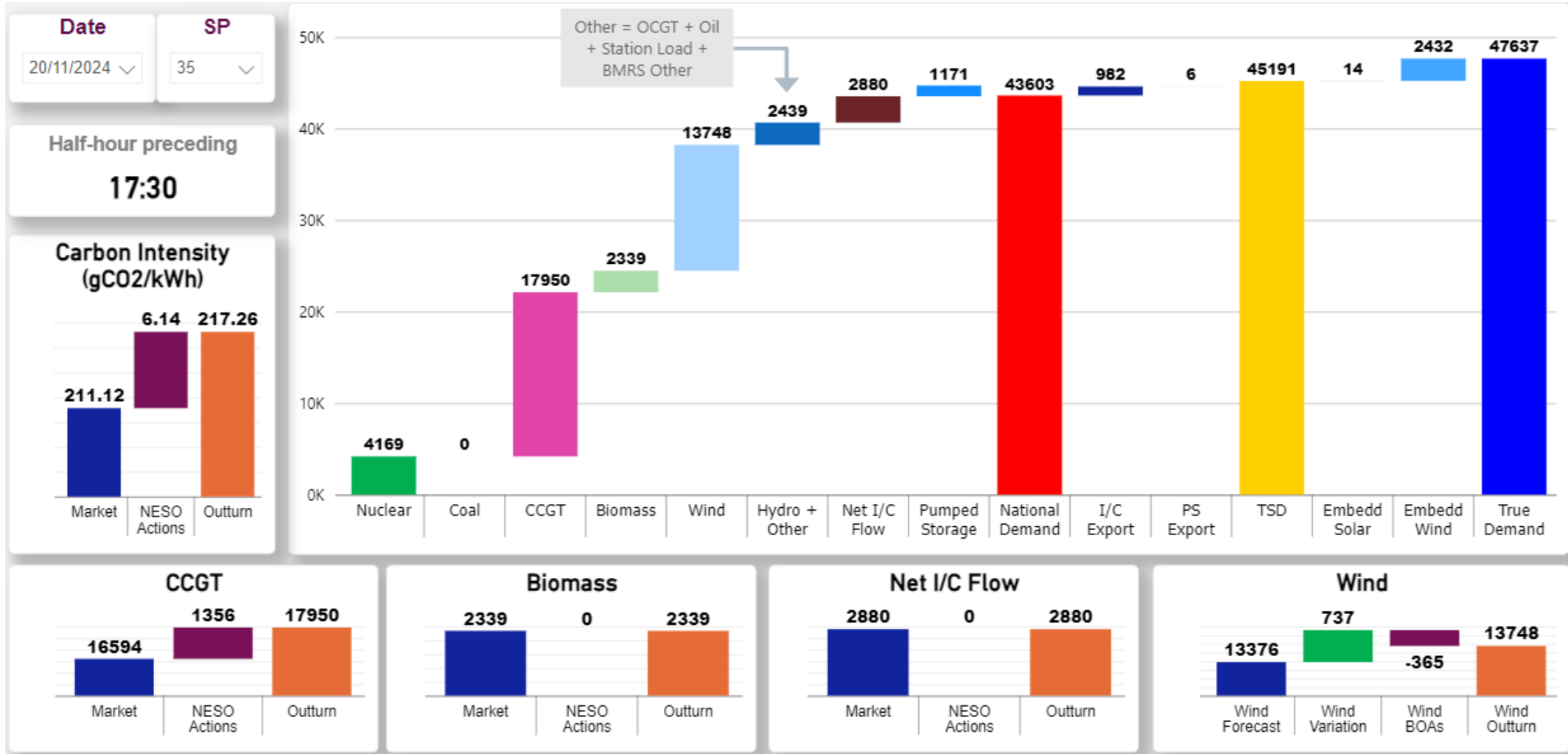
Slido code #OTF



# NESO Actions | Peak Demand – SP spend ~ £188k

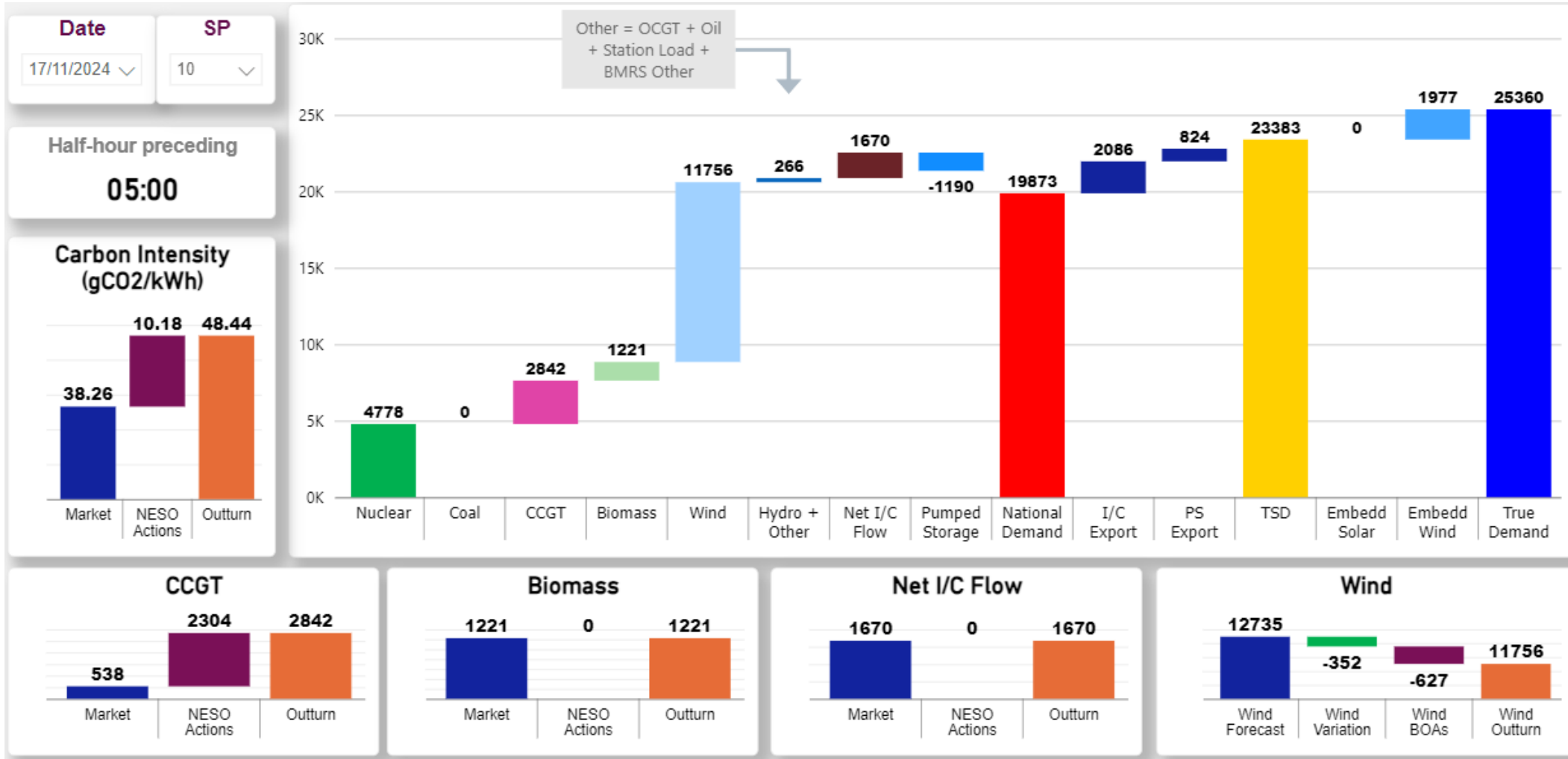
## Wednesday 20<sup>th</sup> November

Slido code #OTF



# NESO Actions | Minimum Demand – SP spend ~ £203k Sunday 17<sup>th</sup> November

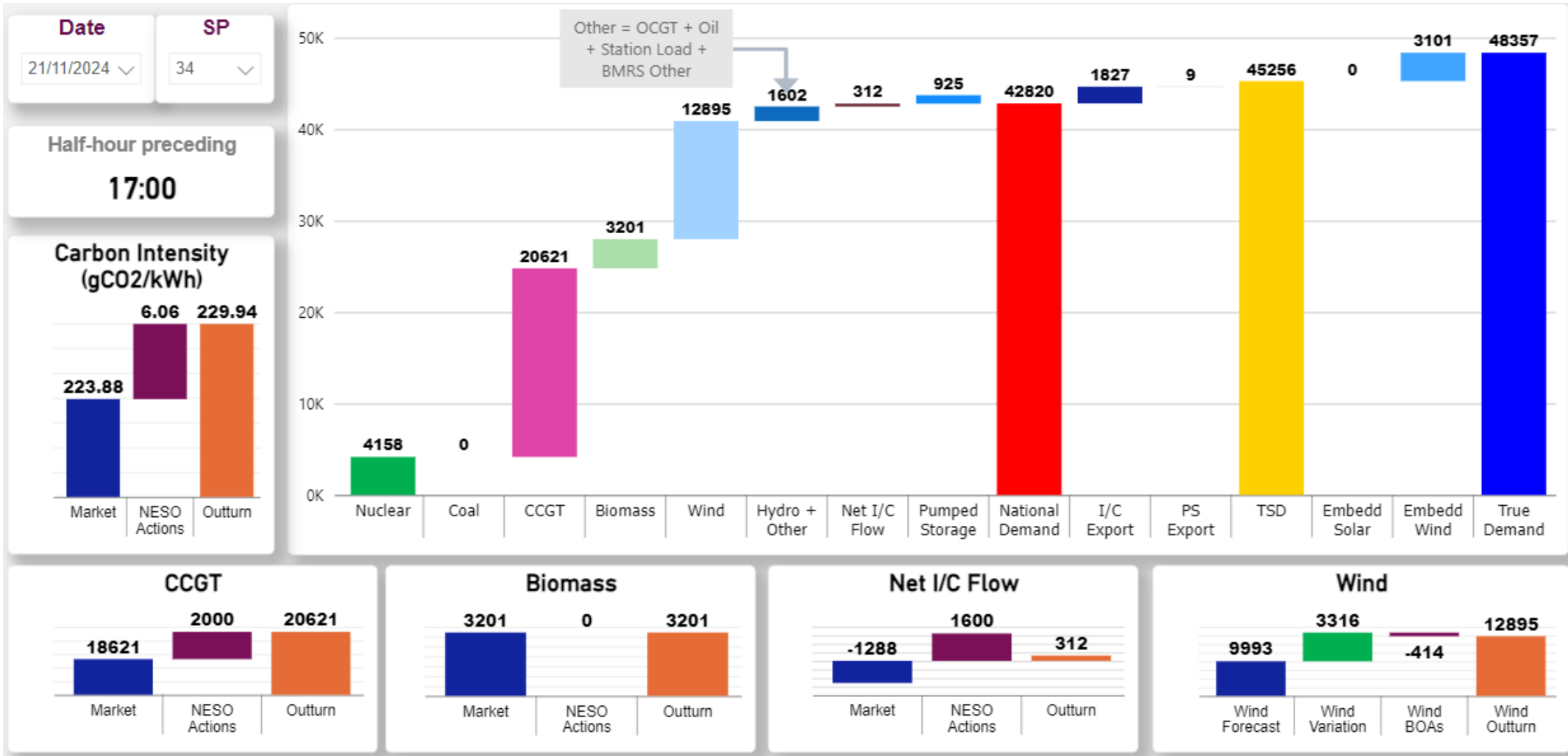
Slido code #OTF



# NESO Actions | – Highest SP spend ~ £460k

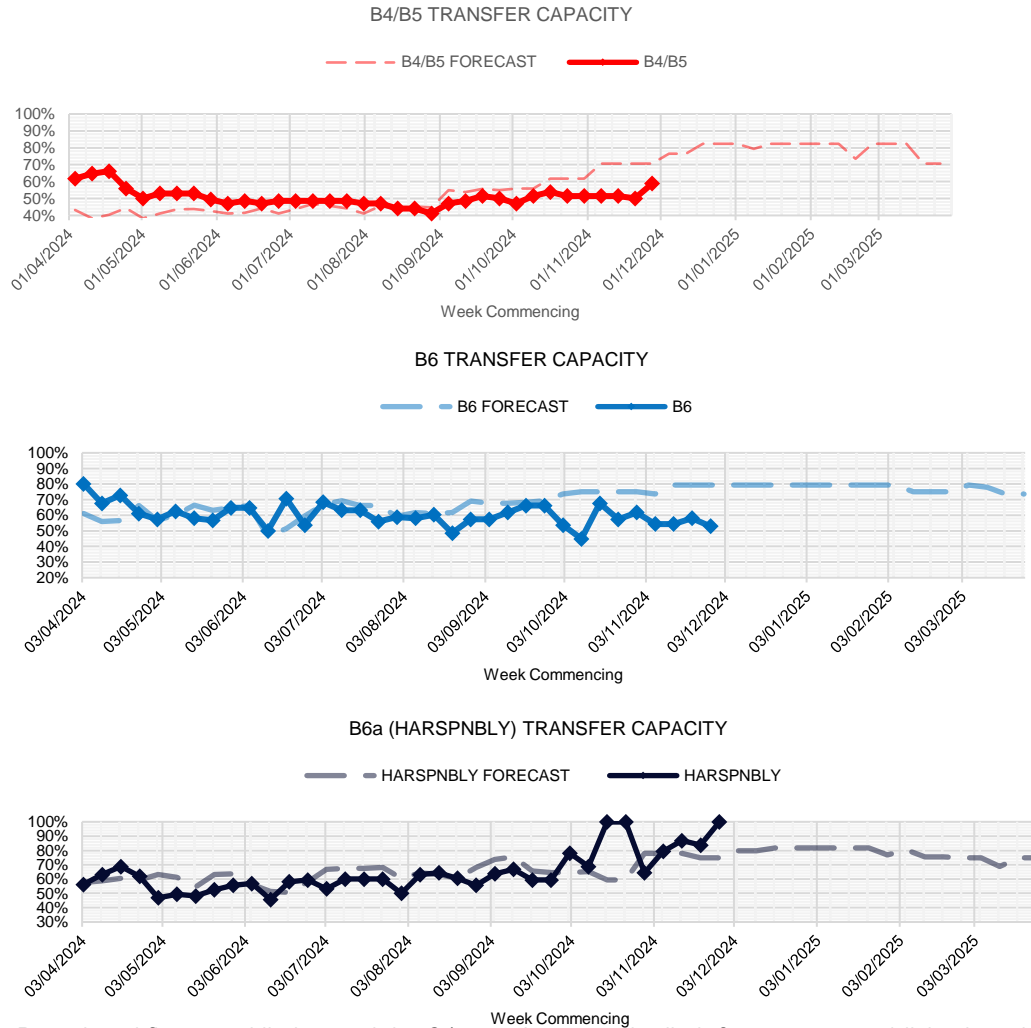
## Thursday 21st November

Slido code #OTF

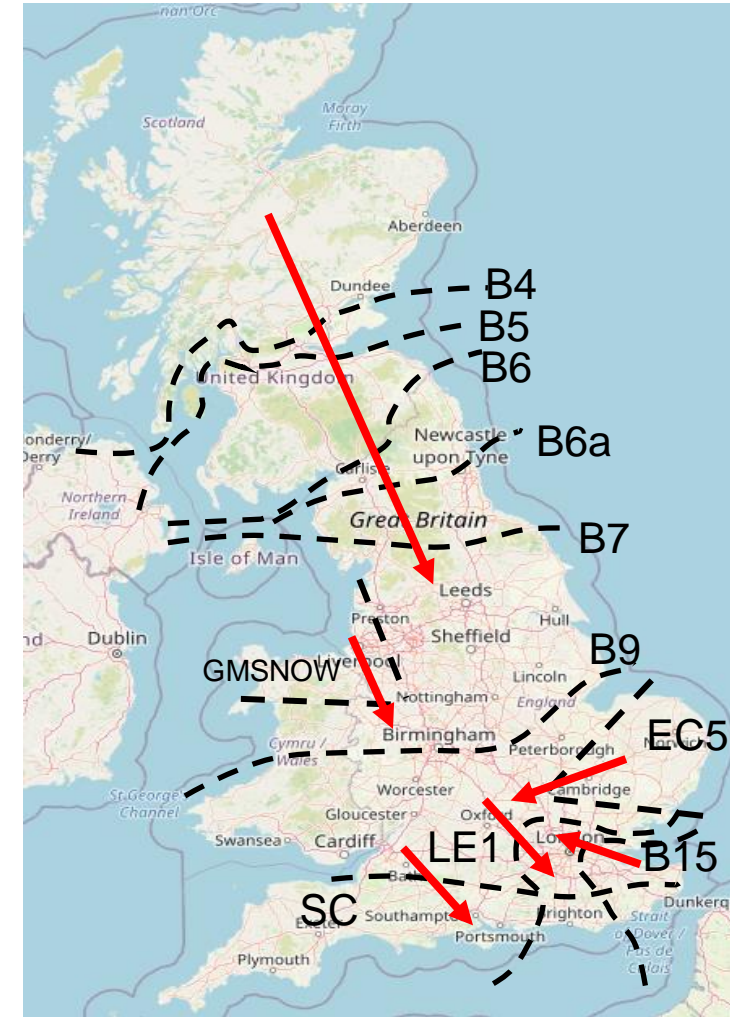


# Transparency | Network Congestion

Slido code #OTF



Boundary	Max. Capacity (MW)	Current Capacity (%)
B4/B5	3400	59%
B6 (SCOTEX)	6800	53%
HARSPNBLY	8000	100%
B7 (SSHARN)	8325	69%
GMSNOW	4700	46%
EC5	5000	100%
LE1 (SEIMP)	8500	85%
B15 (ESTEX)	7500	77%
SC1	7300	100%



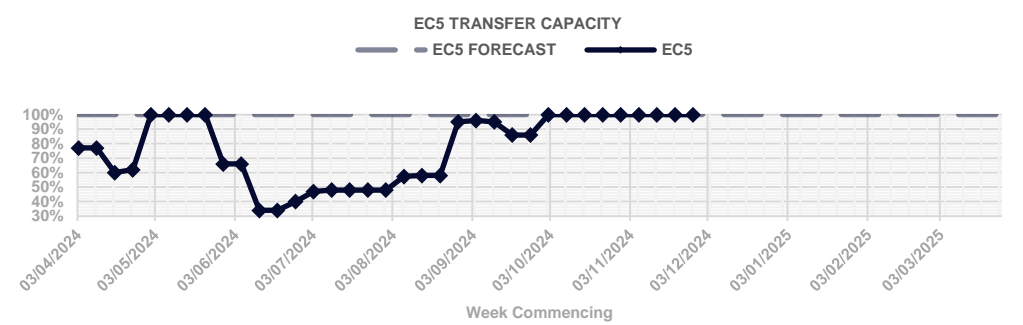
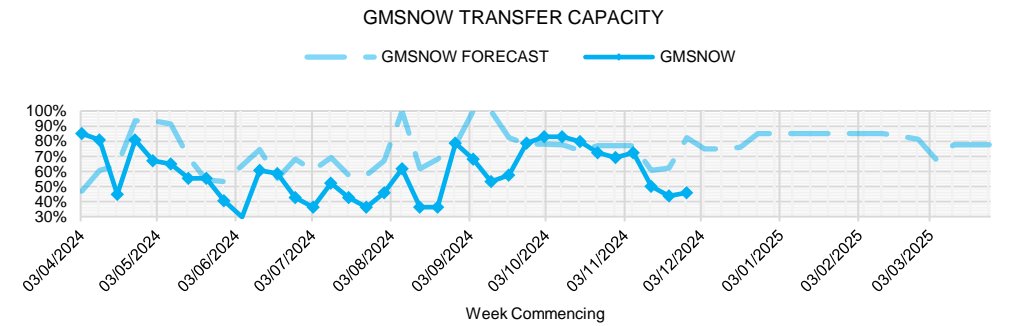
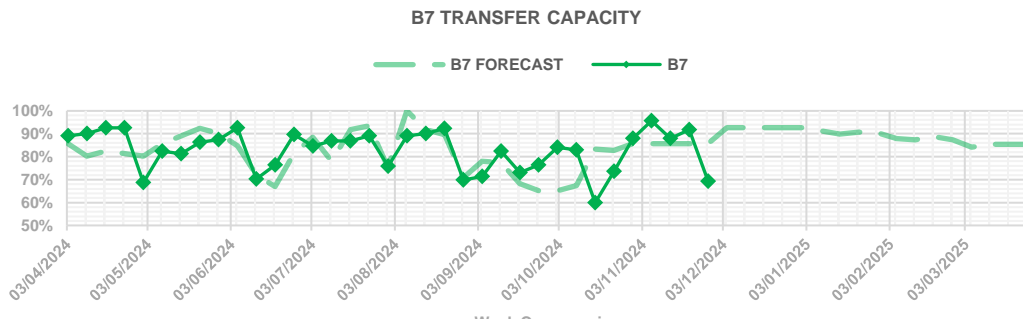
Day ahead flows and limits, and the 24-month constraint limit forecast are published on the ESO Data Portal: [Constraints Management](#)

(The forecast and day ahead limits may vary due to changes in the outage plan. The plan is reviewed periodically throughout the year to ensure we are optimising system conditions, whilst managing any necessary outage plan changes)

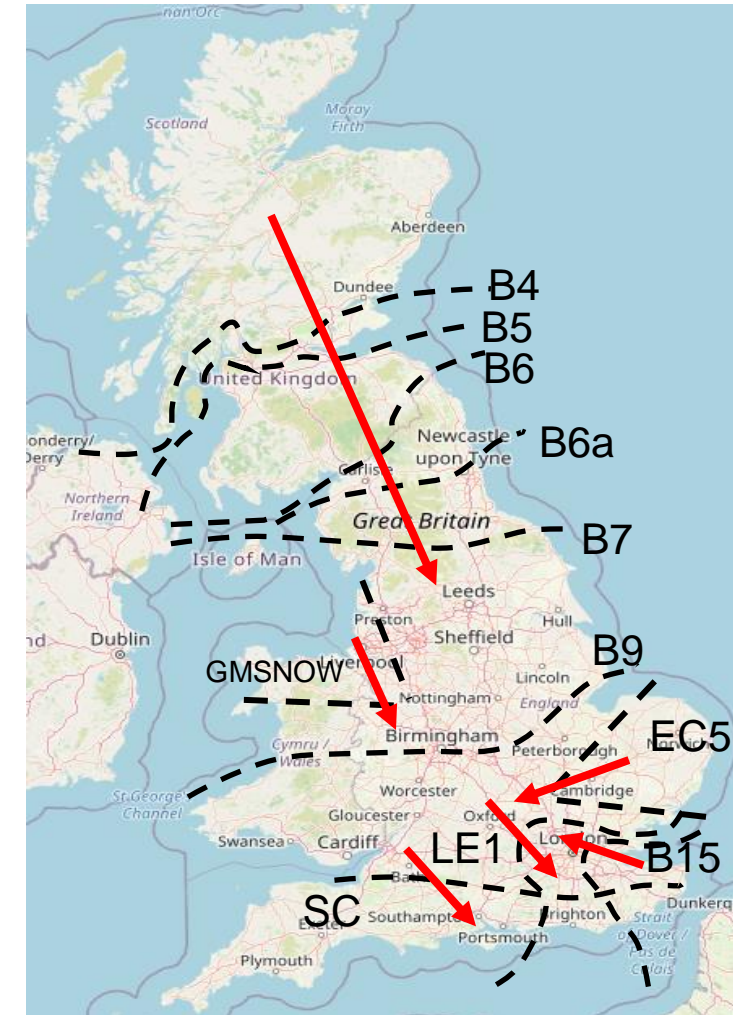


# Transparency | Network Congestion

Slido code #OTF



Boundary	Max. Capacity (MW)	Current Capacity (%)
B4/B5	3400	59%
B6 (SCOTEX)	6800	53%
HARSPNBLY	8000	100%
B7 (SSHARN)	8325	69%
GMSNOW	4700	46%
EC5	5000	100%
LE1 (SEIMP)	8500	85%
B15 (ESTEX)	7500	77%
SC1	7300	100%

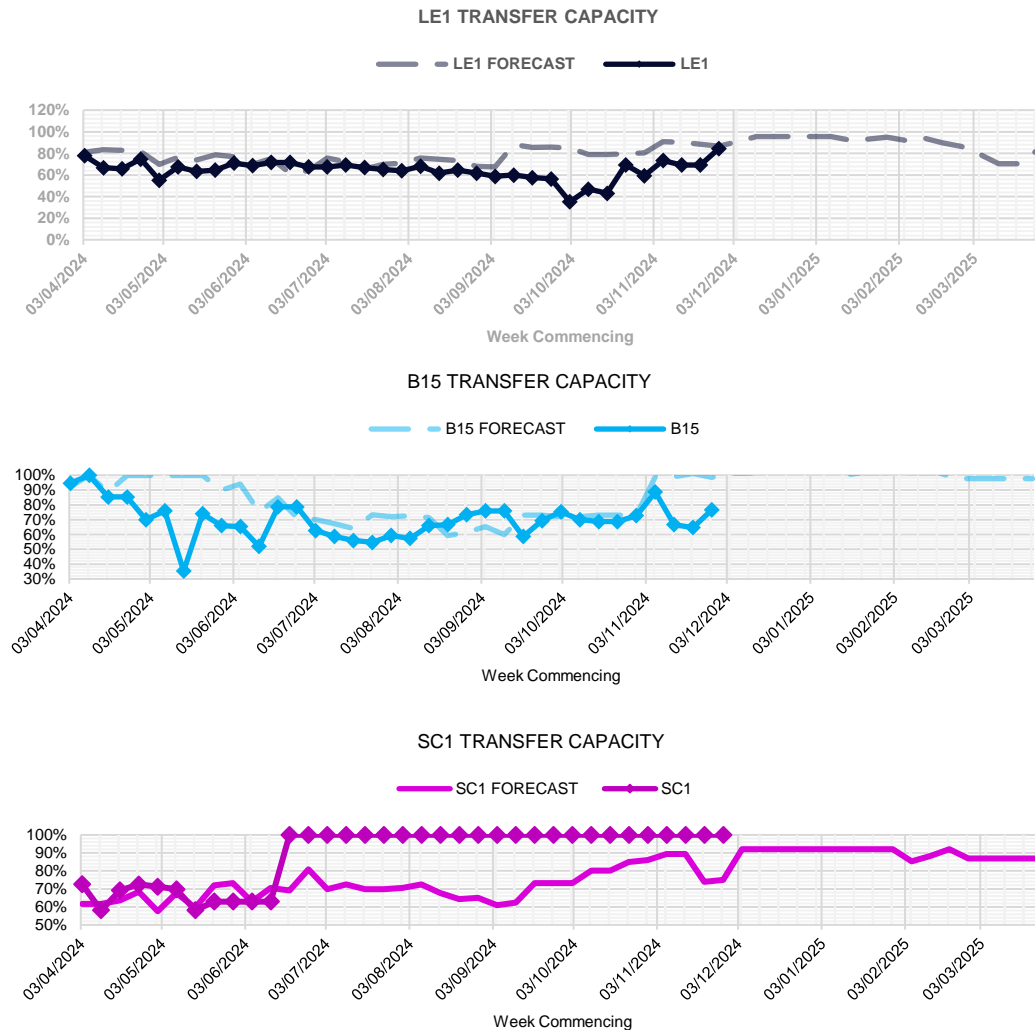


Day ahead flows and limits, and the 24-month constraint limit forecast are published on the ESO Data Portal: [Constraints Management](#)

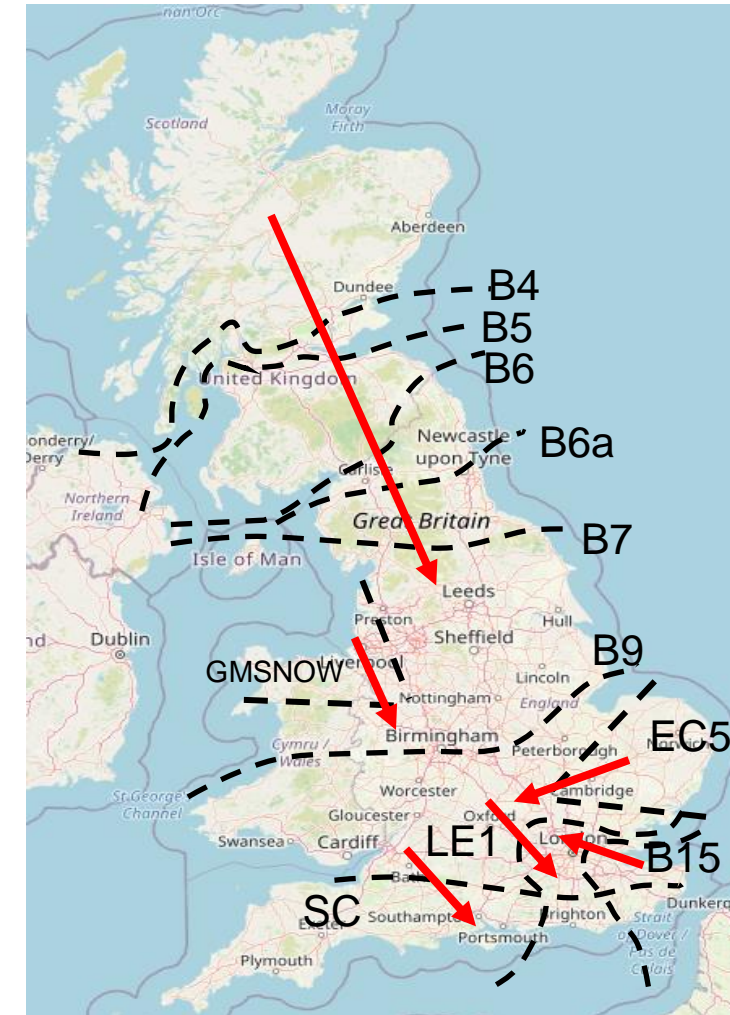
(The forecast and day ahead limits may vary due to changes in the outage plan. The plan is reviewed periodically throughout the year to ensure we are optimising system conditions, whilst managing any necessary outage plan changes)

# Transparency | Network Congestion

Slido code #OTF



Boundary	Max. Capacity (MW)	Current Capacity (%)
B4/B5	3400	59%
B6 (SCOTEX)	6800	53%
HARSPNBLY	8000	100%
B7 (SSHARN)	8325	69%
GMSNOW	4700	46%
EC5	5000	100%
LE1 (SEIMP)	8500	85%
B15 (ESTEX)	7500	77%
SC1	7300	100%



Day ahead flows and limits, and the 24-month constraint limit forecast are published on the ESO Data Portal: [Constraints Management](#)

(The forecast and day ahead limits may vary due to changes in the outage plan. The plan is reviewed periodically throughout the year to ensure we are optimising system conditions, whilst managing any necessary outage plan changes)





# Previously Asked CMN Questions

Slido code #OTF

Q: When NESO issues a Capacity Margin Notice (CMN) what sort of physical response is expected and with what sort of profile?

A: If there is a System Stress Event (SSE) 4 hours after the CMN then parties must respond so they they can meet their Adjusted Load Following Capacity Obligation (ALFCO) under their CM agreements. For less flexible plant they may need to start ramping before the 4 hours is up. They would not need a separate NESO instruction to do this. Some small BMU's and non-BMU's are not instructible by NESO.

CMUs must be generating in a stress event whether or not dispatched by the Control Room. It is expected that BM active BMUs would have set their FPNs to at least the ALFCO, against the risk of an SSE, which is not known until after the event, Any party that is not generating to at least their ALFCO (unless instructed by NESO to not generate, or if they are under an ancillary Services agreement that prevents them from generating) in an SSE, will be subject to CM penalties.

The Capacity Market and Rules apply all year round – they are not just for the winter period.

There is approximately 10GW (9GW de-rated) of embedded connection capacity that is not directly visible to us through the BM and submitted PN's.

# Previously Asked Questions

Slido code #OTF

**Live Q (13/11/2024):** What are the barriers to having a fuel-type data-feed "Battery" with 5-minutely exports and imports akin to pumped storage? At the moment we only see the exports and it is all lumped in with recips etc.

**A:** We are currently finalising an expanded list of fuel types to provide more useful segregation of data in future. The current list of additional contenders for inclusion are:

Battery, Biodiesel, Biofuel, Combined Heat and Power, Compressed Air, Gas Reciprocating Engines, Geothermal, Hydrogen, Liquid Air, Liquid Natural Gas, Solar, Tidal, , Waste Incinerator.

Please do contact us via [box.NC.Customer@nationaloenergyso.com](mailto:box.NC.Customer@nationaloenergyso.com) with any further suggestions for consideration.

At the same time we are developing the implementation plan to ensure the successful implementation of the expansion of fuel type categories available for the Balancing Mechanism and in Elexon data. We appreciate you would like to see this change made quickly but we need to clearly understand the impacts on downstream datasets, systems and tools before we make these changes. We will update at the OTF when we have the timeline for delivery.

Once the expanded list has been implemented, we expect this will be reflected in the existing Elexon APIs and real time information. For more information about these services please contact Elexon directly at:

[insightssupport@elexon.co.uk](mailto:insightssupport@elexon.co.uk)

# Previously Asked Questions

**Q:** When you close the teams session so quickly we aren't able to see the chat and look at the links that are posted!

**A:** Apologies for this, we will aim to make sure the chat is left open in the future after the call has ended early.

**Q:** Is NESO publishing some distribution data that support CP2030 work? Thanks Steve.

**A:** Analysis is ongoing to provide regional splits by region. These regions will include the 19 GBR zones set out in our Connections Reform consultation and also DNO areas. The GBR zones data has already been shared and some draft DNO data was included in the Connections Reform Methodology consultation. The final split is being worked on and the DNO licence area data will be made publicly available to help customers make informed decisions. This analysis is based on our CP2030 data, which may need to be updated once we receive the DESNZ report.

You will find the data workbook with the other publications at: [Clean Power 2030 | National Energy System Operator](#)

# Previously Asked Questions

Slido code #OTF

**Q:** Will NESO be able to run a net-zero carbon electricity system? Original plans were "by 2025" (e.g. <https://www.nationalgrid.com/electricity-transmission/who-we-are/riio-t2-performance/enable-ongoing-transition>), what is the timeline now? In particular in terms of inertia, given FRCR 2025.

**A:** As published in the [Operability Strategy Report \(OSR\) 2024](#) our ambition is to be able to operate the transmission system for short periods when the market delivers a zero carbon generation mix. Reviewing our minimum inertia requirements for frequency control forms part of the our strategy to be able to operate a zero carbon system.

FRCR 2025 will look into reducing the minimum inertia policy to 102 GVA.s, allowing more flexibility in operating a zero-carbon system.

We expect to publish our next Operability Strategy Report in March 2025.

**Q:** Appreciate the informative sessions in the last two weeks required you to skip over the usual updates on forecasts and costs of balancing, but could you briefly review the dunkelflaute we had at the beginning of November and highlight any impacts it had on NESO's balancing actions

**A:** We will include this at next week's OTF (4 December)

# Advanced Questions

Slido code #OTF

**Q:** In last week's OTF (20th November), the slides referenced a change to the requirements to Dynamic Regulation and Dynamic Moderation ("FRCR 2025 Analysis and Report will include NESO updated pre-fault assumptions including DR and DM requirements"). Please can you explain what the requirements is referring to? Is this just to reflect the change in DR/DM procurement volumes, or are there changes to the service terms etc.?

**A:** The inclusion of this section aims to provide a clearer explanation of how NESO calculates the volume of DR/DM services and the rationale behind it. This FRCR does not propose any changes to the service terms.

**(New) Q:** In the overnight period between the evening of 20th November and morning of 21st November, we noticed large frequency dips occur exactly on the half hour, every half hour. This was a sharp frequency drop every time occurring in every half hour. Please can NESO explain: 1) why this is happening, 2) why at this interval, and 3) why the frequency is only decreasing (i.e. not increasing)?

# Outstanding questions

Slido code #OTF

**Q:** On FRCR again. We have range of legacy converter based performance from mid 1980s to today. To different specifications, tolerances & capabilities. Some of the assumptions surrounding lower inertia require understanding risks of devices present. Care needed on Transients impacting C&P measurement

**Q:** Will NESO align FRCR reporting with Grid Code and use units of MWs (MegaWattseconds) and refrain from using MVAs as a measure of inertia?

**A:** Thank you for your feedback. We are working on these questions and aiming to provide an update soon. We will communicate the findings through the future OTFs.

# Outstanding questions

**Q:** What progress has been made on publishing metering of non-BM assets / regional parts of the network, which has been discussed a lot and was been actively worked on?

**A:** In the weeks since this question was asked (23 October) we have been asking for the questioner to contact [box.DERVisibility@uk.nationalenergyso.com](mailto:box.DERVisibility@uk.nationalenergyso.com) with further information to assist us in answering this question.

Unfortunately we do not have contact details for the person who originally asked this question. If they do not contact us to provide the necessary information we will have to remove this question from the outstanding questions for next week.

Also, we apologise for providing an incorrect email address in our initial response to this question.

# Reminder about answering questions at the NESO OTF

Slido code #OTF

- **Questions from unidentified parties will not be answered live.** If you have reasons to remain anonymous to the wider forum, please use the advance question or email options. Details in the appendix to the pack.
- **The OTF is not the place to challenge the actions of individual parties** (other than the NESO), and we will not comment on these challenges. This type of concern can be reported to the Market Monitoring team at: [marketreporting@nationalenergyso.com](mailto:marketreporting@nationalenergyso.com)
- **Questions will be answered in the upvoted order whenever possible.** We will take questions from further down the list when: the answer is not ready; we need to take the question away or the topic is outside of the scope of the OTF.
- **Slido will remain open until 12:00**, even when the call closes earlier, to provide the maximum opportunity for you to ask questions.
- **All questions will be recorded and published** All questions asked through Sli.do will be recorded and published, with answers, in the Operational Transparency Forum Q&A on the webpage: <https://www.neso.energy/what-we-do/systems-operations/operational-transparency-forum>
- **Takeaway questions** – these questions will be included in the pack for the next OTF, we may ask you to contact us by email in order to clarify or confirm details for the question.
- **Out of scope questions** will be forwarded to the appropriate NESO expert or team for a direct response. We may ask you to contact us by email to ensure we have the correct contact details for the response. These questions will not be managed through the OTF, and we are unable to forward questions without correct contact details. Information about the OTF purpose and scope can be found in the appendix of this slide pack



slido



## **Audience Q&A**

① Start presenting to display the audience questions on this slide.

# Feedback

Slido code #OTF

Please remember to use the feedback poll in Sli.do after the event.

We welcome feedback to understand what we are doing well and how we can improve the event for the future.

If you have any questions after the event, please contact the following email address:  
[box.nc.customer@nationalenergys.com](mailto:box.nc.customer@nationalenergys.com)

# Appendix

# Participation in the Operational Transparency Forum

Slido code #OTF

Thank you to everyone who participates in the OTF, whether you join weekly, monthly, on specific occasions or follow up with the webinar recordings and published slides. We hear from participant feedback and our NESO colleagues that all of us value the opportunity to share information, ask questions and share the answers.

One of the reasons this format works so well is the professional courtesy we see demonstrated every week.

However, in recent weeks there have been some Slido questions and comments in the Q&A session directed at specific market participants suggesting their actions are not appropriate. This is concerning because:

- The statements are being made in a public forum without the opportunity to reply
- The negative comments may impact these businesses directly, or indirectly e.g.: through social media, etc.
- The individuals asking questions could not be traced using the details provided in Slido
- **The OTF is not the place to challenge the actions of individual parties** (other than the NESO), and we will not comment on these challenges. This type of concern can be reported to the Market Monitoring team at: [marketreporting@nationalenergyso.com](mailto:marketreporting@nationalenergyso.com)

**Remember**, if you have reasons to remain anonymous to the wider forum or have concerns your question may not be one to ask in public, you can use the advance questions or email options.

# Purpose and scope of the NESO Operational Transparency Forum

Slido code #OTF

## Purpose

The Operational Transparency Forum runs once a week to provide updated information on and insight into the operational challenges faced by the control room in the recent past (1-2 weeks) and short-term future (1-2 weeks). The OTF will also signpost other NESO events, provide deep dives into focus topics, and allow industry to ask questions.

## Scope

Aligns with purpose, see examples below:

### **In Scope of OTF**

Material presented i.e.: regular content, deep dives, focus topics  
NESO operational approach & challenges  
NESO published data

### **Out of Scope of OTF**

Data owned and/or published by other parties  
e.g.: BMRS is published by Elexon  
Processes including consultations operated by other parties e.g.: Elexon, Ofgem, DESNZ  
Data owned by other parties  
Details of NESO Control Room actions & decision making  
Activities & operations of particular market participants  
NESO policy & strategic decision making  
Formal consultations e.g.: Code Changes, Business Planning, Market development

# Managing questions at the NESO Operational Transparency Forum

Slido code #OTF

- OTF participants can ask questions in the following ways:
  - Live via Slido code #OTF
  - In advance (before 12:00 on Monday) at <https://forms.office.com/r/k0AEfKnai3>
  - At any time to [box.nc.customer@nationalenergyso.com](mailto:box.nc.customer@nationalenergyso.com)
- **All questions asked through Sli.do** will be recorded and published, with answers, in the Operational Transparency Forum Q&A on the webpage: [Operational Transparency Forum | NESO](#)
- **Advance questions** will be included, with answers, in the slide pack for the next OTF and published in the OTF Q&A as above.
- **Email questions** which specifically request inclusion in the OTF will be treated as Advance questions, otherwise we will only reply direct to the sender.
- **Takeaway questions** – we may ask you to contact us by email in order to clarify or confirm details for the question.
- **Out of scope questions** will be forwarded to the appropriate NESO expert or team for a direct response. We may ask you to contact us by email to ensure we have the correct contact details for the response. These questions will not be managed through the OTF, and we are unable to forward questions without correct contact details. Information about the OTF purpose and scope can be found in the appendix of this slide pack.

# NESO Information Request Statement

## **The Energy Act 2023 and the power to request information.**

Section 172 of The Energy Act 2023 provides NESO, as the Independent System Operator and Planner, with the power to require information, from anyone carrying out a relevant activity, to allow it to carry out any of its functions. This power will come into effect once NESO is operational.

In advance of this we are consulting on what the Information Request Statement will contain and what an Information Request issued by NESO may look like.

## **The Information Request Statement and Notice.**

The Statement will be available on our website and will contain sections on why a request has been issued, the process of responding to a request, what happens if a recipient does not provide the information and how we will manage any data provided. A draft template of an Information Request Notice is also shared on our website.

## **The Consultation**

We are running a consultation from **May 3<sup>rd</sup> to May 31<sup>st</sup>** which can be found at <https://www.neso.energy/about/operational-information/information-request-statement-consultation> and would welcome feedback from across industry to make sure we develop a statement which is clear and accessible.

Following the consultation period Ofgem will determine if the draft Statement is approved or if any changes are necessary.