

**NESO**  
**National Electricity**  
**Transmission**  
**System**  
Status report

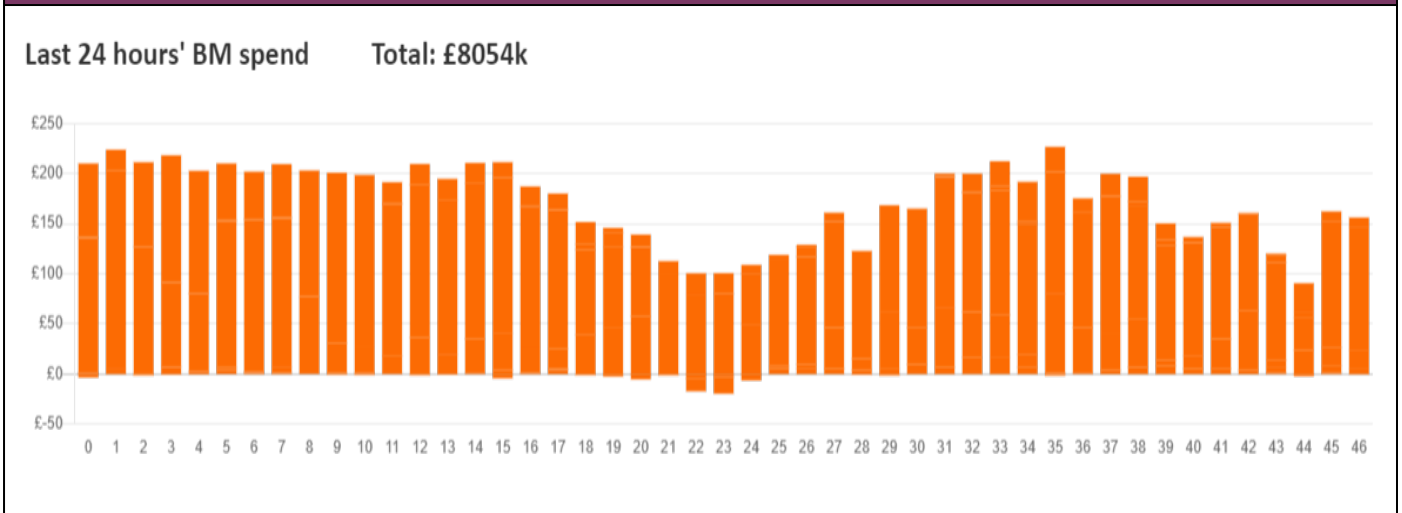


NESO National Electricity Transmission System Status Report  
Monday 18 November 2024

Today's High Level Risk Status Forecast for the next 24h			
General Status		Voltage	
Demand		System Inertia	
System Margins		Weather	
Generation		Transmission	
Active Constraints			
<a href="#">System Warning</a>			

<a href="#">Today's Minimum De-Rated Margin</a>	2,968 MW (SP 35)	
Current BMU Largest Loss Risk	Generation	1300 MW
	Demand	560 MW

Balancing Costs



Yesterday's Market Summary

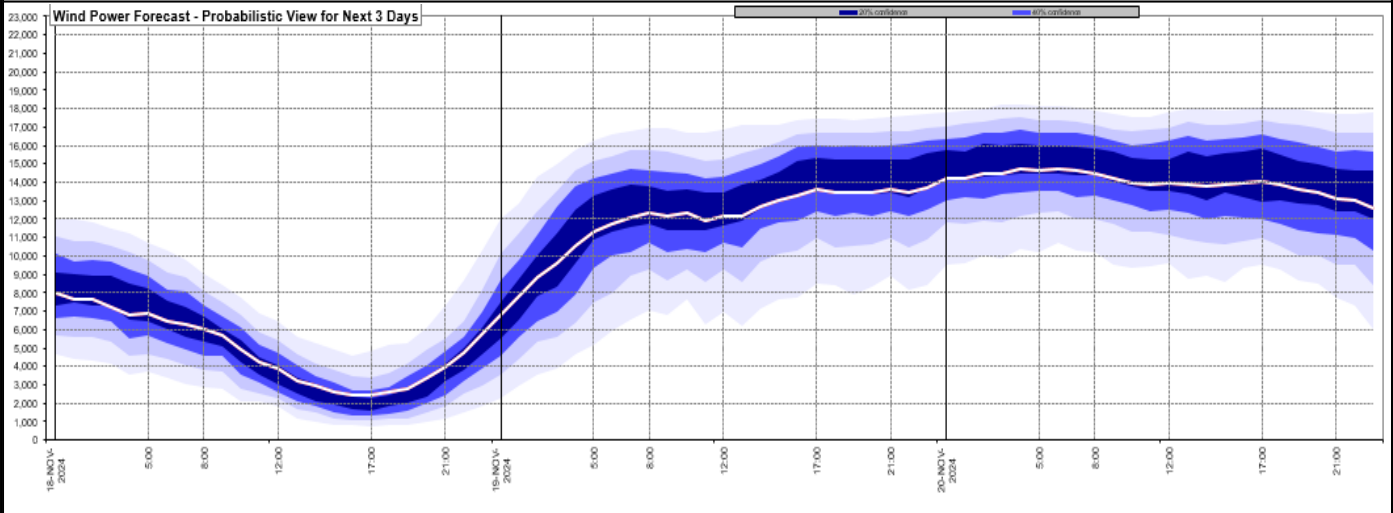
<a href="#">Cash Out Price (Max)</a>	£136.90 /MWh (SP 37,38)
<a href="#">Cash Out Price (Min)</a>	£-13.50 /MWh (SP 11,12)
<a href="#">Peak Demand Yesterday</a>	39,394 MW
<a href="#">Minimum Demand</a>	19,873 MW

Interconnector

Net Transfer Capacity (MWs)

Today	Import	Export	Remarks
Netherlands (BritNed)	1000	1000	Fully Available
France (IFA)	2000	2000	Fully Available
Belgium (Nemo)	1000	1000	Fully Available
Ireland (EWIC)	500	500	Fully Available
France (ElecLink)	0	0	On Outage
Northern Ireland (MOYLE)	450	450	Fully Available
Norway (NSL)	1400	1400	Fully Available
France (IFA2)	1000	1000	Fully Available
Viking Link	1430	1430	Fully Available
Ireland (GreenLink)	0	0	Not yet commissioned

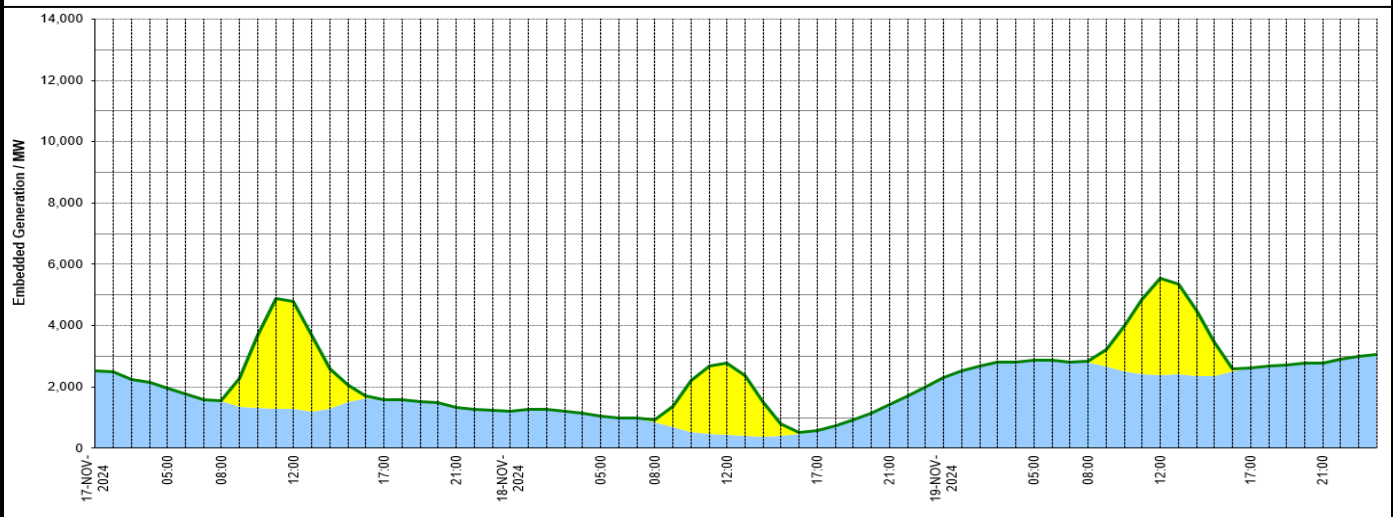
### Wind Power Forecast



### Expected embedded generation (MWs)

#### Embedded Generation Forecast

Embedded Generation Estimates													Last run: 18-Nov-2024 04:32:42				
	17-NOV-2024					18-NOV-2024					19-NOV-2024						
	05:00	08:00	12:00	17:00	21:00	00:00	05:00	08:00	12:00	17:00	21:00	00:00	05:00	08:00	12:00	17:00	21:00
Solar (MW)	0	11	3502	0	0	0	0	84	2334	0	0	0	0	42	3151	0	0
Wind (MW)	1977	1532	1283	1576	1345	1205	1051	841	442	589	1417	2303	2879	2789	2394	2612	2788
STOR (MW)	0	0	0	0	0	0	0	0	0	0	0	0	0	0	0	0	0
<b>Total (MW)</b>	<b>1977</b>	<b>1543</b>	<b>4785</b>	<b>1576</b>	<b>1345</b>	<b>1205</b>	<b>1051</b>	<b>925</b>	<b>2776</b>	<b>589</b>	<b>1417</b>	<b>2303</b>	<b>2879</b>	<b>2831</b>	<b>5545</b>	<b>2612</b>	<b>2788</b>



Weather	Source	Commentary
Latest forecast (Summary)	<a href="#">Met Office</a> <a href="#">SEPA</a> <a href="#">Natural Resources Wales</a>	<p><b>Today:</b> A mix of sunshine and wintry showers today across northern Scotland. Otherwise, bright spells across northern and eastern areas, but rain in the south and west will gradually spread northeastwards, turning to snow over northern hills. Feeling cold for many.</p> <p><b>Tonight:</b> Wet and windy across the south, with rain turning to sleet and snow across central areas. Clear spells developing further north, leading to a risk of icy patches.</p>
General Weather Concerns e.g. wind, rain, snow, flooding, GB Weather Warnings	<a href="#">Met Office</a> <a href="#">Weather Warnings</a> <a href="#">SEPA</a> <a href="#">Natural Resources Wales</a>	<p><b>UK Weather Warnings</b> Yellow warning of snow and ice Areas affected: Grampian   Highlands &amp; Eilean Siar   Orkney &amp; Shetland</p> <p>ACTIVE Started at: 16:00 GMT on Sun 17 November</p> <p>Ends: 11:00 GMT on Mon 18 November</p>

Weather	Source	Commentary
		<p>Ice and some snow leading to slippery surfaces and difficult travel conditions.</p> <ul style="list-style-type: none"> <li>- Some roads and railways may be affected with longer journey times by road, bus and train services</li> <li>- Probably some icy patches on some untreated roads, pavements and cycle paths</li> <li>- Some injuries from slips and falls on icy surfaces</li> </ul> <p>Yellow warning of snow and ice Areas affected: East Midlands   North East England   North West England   SW Scotland, Lothian Borders   Strathclyde   Wales   West Midlands   Yorkshire &amp; Humber</p> <p>Starts: 19:00 GMT on Mon 18 November</p> <p>Ends: 10:00 GMT on Tue 19 November</p> <p>An area of snow may bring disruption to a central swathe of the UK during Monday night and Tuesday morning.</p> <ul style="list-style-type: none"> <li>- There is a small chance of travel delays on roads with some stranded vehicles and passengers, along with delayed or cancelled rail and air travel</li> <li>- There is a slight chance that some rural communities could become cut off</li> <li>- There is a small chance that power cuts will occur and other services, such as mobile phone coverage, may be affected</li> <li>- A small chance of injuries from slips and falls on icy surfaces</li> <li>- There is a slight chance that bus and train services may be delayed or cancelled, with some road closures and longer journey times</li> <li>- A small chance that untreated pavements and cycle paths become impassable</li> </ul> <p><b>Flood Warnings</b></p> <p>2 flood warnings and 29 flood alerts issued for England.</p> <p>0 flood warning and 0 flood alerts issued for Scotland.</p> <p>0 flood warnings and 1 flood alerts issued for Wales.</p>

Contains public sector information licensed under the Open Government Licence v1.0

Further Information	
BM Reports	<a href="https://www.bmreports.com">https://www.bmreports.com</a>
System Balancing Reports	<a href="https://www.neso.energy/industry-information/industry-data-and-reports/system-balancing-reports">https://www.neso.energy/industry-information/industry-data-and-reports/system-balancing-reports</a>
Forecast Volumes and Costs	<a href="https://www.neso.energy/industry-information/industry-data-and-reports/forecast-volumes-and-costs">https://www.neso.energy/industry-information/industry-data-and-reports/forecast-volumes-and-costs</a>