

**NESO**  
**National Electricity**  
**Transmission**  
**System**  
Status report

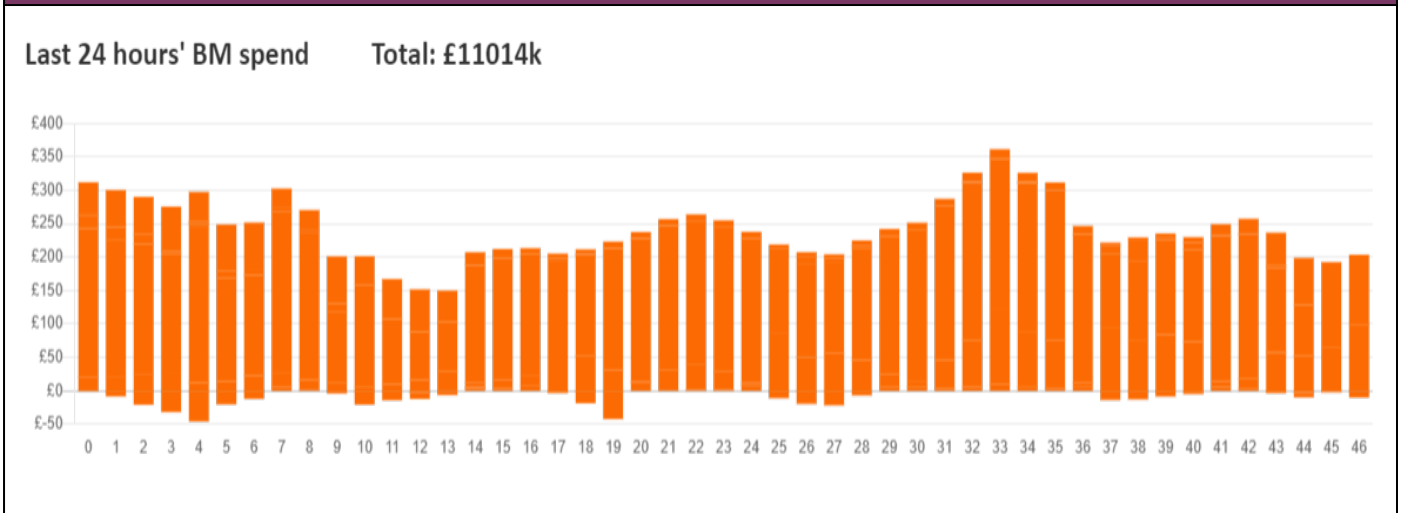


NESO National Electricity Transmission System Status Report  
Sunday 17 November 2024

Today's High Level Risk Status Forecast for the next 24h			
General Status		Voltage	
Demand		System Inertia	
System Margins		Weather	
Generation		Transmission	
Active Constraints			
<a href="#">System Warning</a>			

<a href="#">Today's Minimum De-Rated Margin</a>	9,786 MW (SP 34)	
Current BMU Largest Loss Risk	Generation	1500 MW
	Demand	560 MW

Balancing Costs



Yesterday's Market Summary

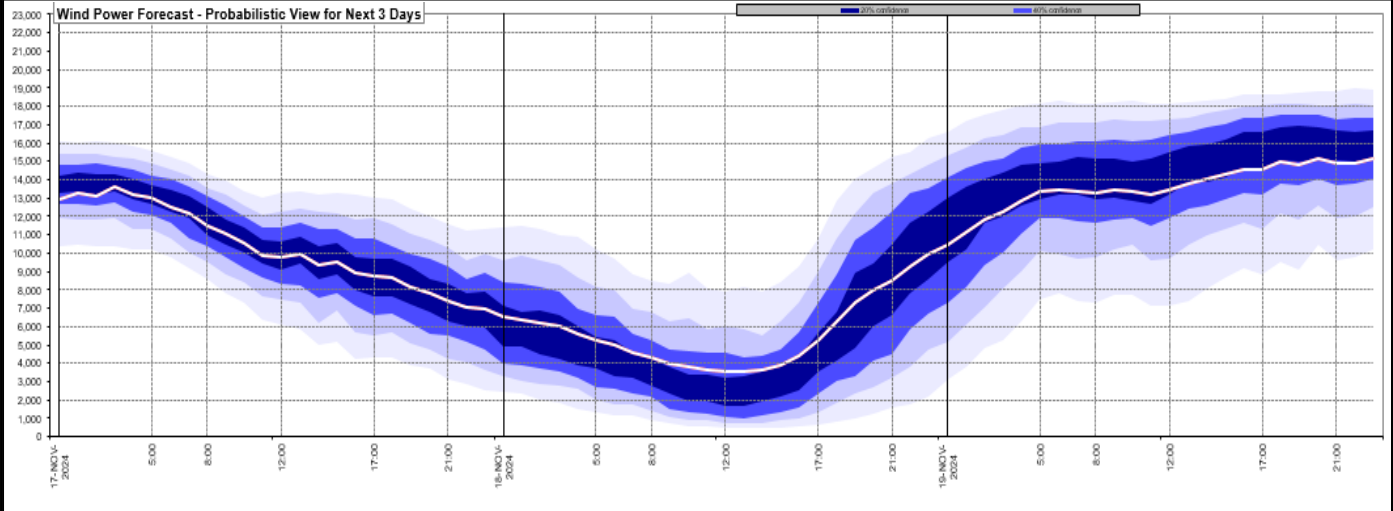
<a href="#">Cash Out Price (Max)</a>	£127 /MWh (SP 37)
<a href="#">Cash Out Price (Min)</a>	£21.65 /MWh (SP 47)
<a href="#">Peak Demand Yesterday</a>	36,199 MW
<a href="#">Minimum Demand</a>	20,058 MW

Interconnector

Net Transfer Capacity (MWs)

Today	Import	Export	Remarks
Netherlands (BritNed)	1000	1000	Fully Available
France (IFA)	2000	2000	Fully Available
Belgium (Nemo)	1000	1000	Fully Available
Ireland (EWIC)	500	500	Fully Available
France (ElecLink)	0	0	On Outage
Northern Ireland (MOYLE)	450	450	Fully Available
Norway (NSL)	1400	1400	Fully Available
France (IFA2)	500	500	Partially Available Full capacity from 23:00
Viking Link	1430	1430	Fully Available
Ireland (GreenLink)	0	0	Not yet commissioned

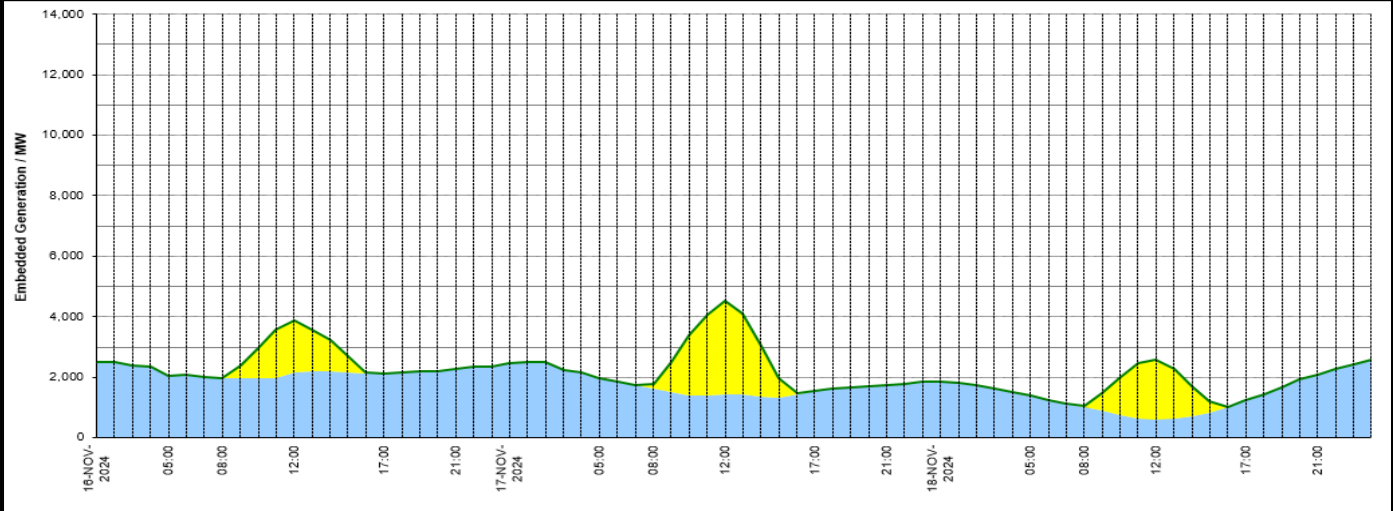
### Wind Power Forecast



### Expected embedded generation (MWs)

#### Embedded Generation Forecast

Embedded Generation Estimates																Last run: 17-Nov-2024 04:32:43	
	16-NOV-2024					17-NOV-2024					18-NOV-2024						
	05:00	08:00	12:00	17:00	21:00	00:00	05:00	08:00	12:00	17:00	21:00	00:00	05:00	08:00	12:00	17:00	21:00
Solar (MW)	0	7	1731	0	0	0	0	140	3078	0	0	0	0	53	1952	0	0
Wind (MW)	2065	1974	2150	2137	2231	2460	1983	1646	1450	1560	1752	1844	1408	1015	616	1255	2093
STOR (MW)	0	0	0	0	0	0	0	0	0	0	0	0	0	0	0	0	0
<b>Total (MW)</b>	<b>2065</b>	<b>1981</b>	<b>3881</b>	<b>2137</b>	<b>2291</b>	<b>2460</b>	<b>1983</b>	<b>1786</b>	<b>4528</b>	<b>1560</b>	<b>1752</b>	<b>1844</b>	<b>1408</b>	<b>1068</b>	<b>2568</b>	<b>1255</b>	<b>2093</b>



Weather	Source	Commentary
Latest forecast (Summary)	<a href="#">Met Office</a> <a href="#">SEPA</a> <a href="#">Natural Resources Wales</a>	<p><b>Today:</b> Hazy spells of sunshine will be replaced by cloud and patchy rain across northern and western parts. Further blustery wintry showers for northern Scotland. Driest and brightest towards the south. Feeling colder.</p> <p><b>Tonight:</b> Scattered wintry blustery showers in the far north, with clear spells leading to a cold and frosty night. Unsettled across central areas with outbreaks of rain, heaviest in the west.</p>
General Weather Concerns e.g. wind, rain, snow, flooding, GB Weather Warnings	<a href="#">Met Office</a> <a href="#">Weather Warnings</a> <a href="#">SEPA</a> <a href="#">Natural Resources</a>	<p><b>UK Weather Warnings</b> Yellow warning of snow and ice Areas affected: Grampian   Highlands &amp; Eilean Siar   Orkney &amp; Shetland</p> <p>Starts: 16:00 GMT on Sun 17 November</p>

Weather	Source	Commentary
	<a href="#">Wales</a>	<p>Ends: 11:00 GMT on Mon 18 November</p> <p>Ice and some snow leading to slippery surfaces and difficult travel conditions.</p> <ul style="list-style-type: none"> <li>- Some roads and railways may be affected with longer journey times by road, bus and train services</li> <li>- Probably some icy patches on some untreated roads, pavements and cycle paths</li> <li>- Some injuries from slips and falls on icy surfaces</li> </ul> <p>Yellow warning of snow and ice Areas affected: Central, Tayside &amp; Fife   North East England   North West England   SW Scotland, Lothian Borders   Strathclyde   Yorkshire &amp; Humber</p> <p>Starts: 10:00 GMT on Mon 18 November</p> <p>Ends: 10:00 GMT on Tue 19 November</p> <p>A small chance of disruption from snow and ice.</p> <ul style="list-style-type: none"> <li>- There is a small chance of travel delays on roads with some stranded vehicles and passengers, along with delayed or cancelled rail and air travel</li> <li>- There is a slight chance that some rural communities could become cut off</li> <li>- There is a small chance that power cuts will occur and other services, such as mobile phone coverage, may be affected</li> <li>- A small chance of injuries from slips and falls on icy surfaces</li> <li>- There is a slight chance that bus and train services may be delayed or cancelled, with some road closures and longer journey times</li> <li>- A small chance that untreated pavements and cycle paths become impassable</li> </ul> <p><b>Flood Warnings</b> 6 flood warnings and 41 flood alerts issued for England.</p> <p>3 flood warning and 0 flood alerts issued for Scotland.</p> <p>0 flood warnings and 1 flood alerts issued for Wales.</p>

Contains public sector information licensed under the Open Government Licence v1.0

Further Information	
BM Reports	<a href="https://www.bmreports.com">https://www.bmreports.com</a>
System Balancing Reports	<a href="https://www.neso.energy/industry-information/industry-data-and-reports/system-balancing-reports">https://www.neso.energy/industry-information/industry-data-and-reports/system-balancing-reports</a>
Forecast Volumes and Costs	<a href="https://www.neso.energy/industry-information/industry-data-and-reports/forecast-volumes-and-costs">https://www.neso.energy/industry-information/industry-data-and-reports/forecast-volumes-and-costs</a>