

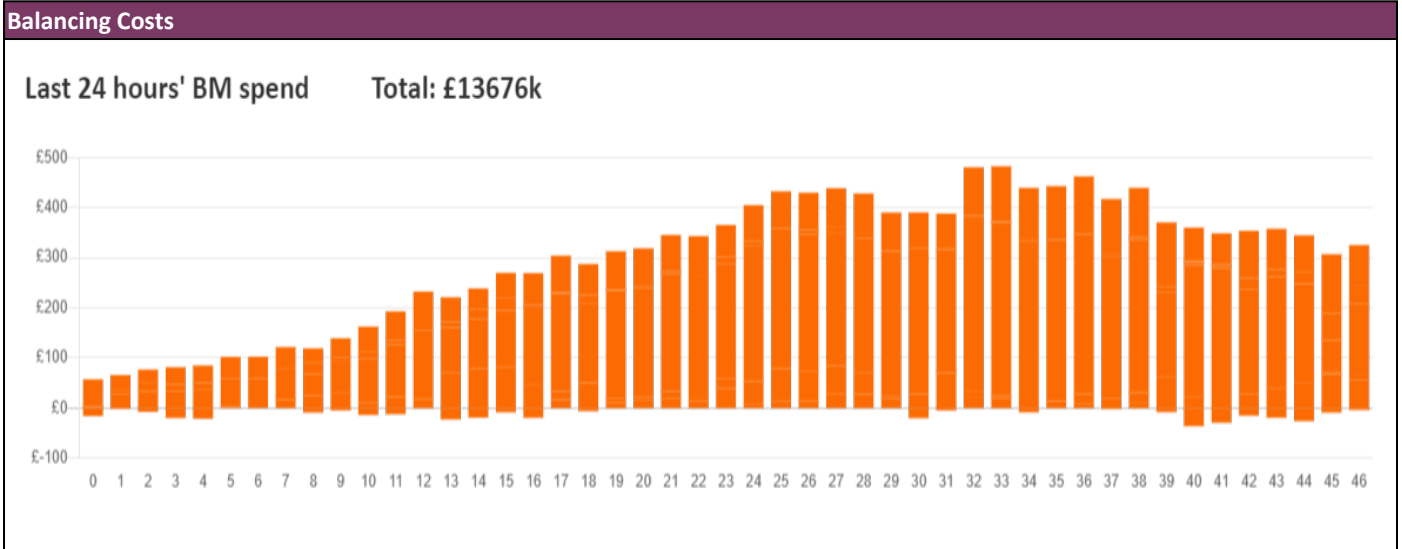
**NESO**  
**National Electricity**  
**Transmission**  
**System**  
Status report



NESO National Electricity Transmission System Status Report  
Saturday 16 November 2024

Today's High Level Risk Status Forecast for the next 24h			
General Status		Voltage	
Demand		System Inertia	
System Margins		Weather	
Generation		Transmission	
Active Constraints			
<a href="#">System Warning</a>			

<a href="#">Today's Minimum De-Rated Margin</a>	15,875 MW (SP 34)	
Current BMU Largest Loss Risk	Generation	1500 MW
	Demand	560 MW



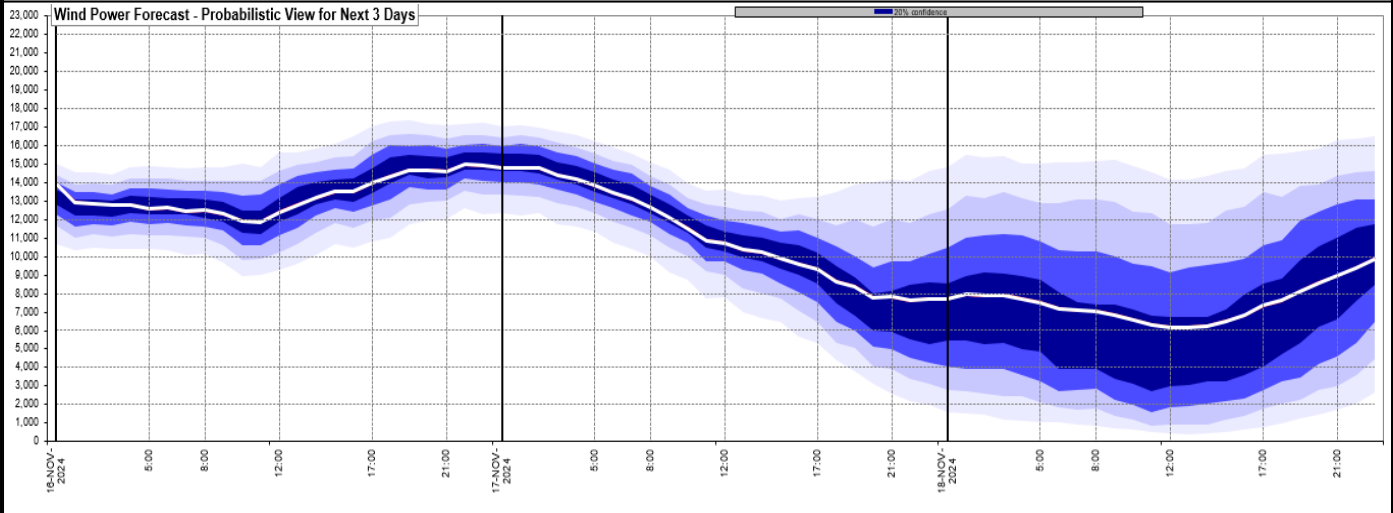
**Yesterday's Market Summary**

<a href="#">Cash Out Price (Max)</a>	£131.49 /MWh (SP 34)
<a href="#">Cash Out Price (Min)</a>	£-13.80 /MWh (SP 47)
<a href="#">Peak Demand Yesterday</a>	39,686 MW
<a href="#">Minimum Demand</a>	22,336 MW

**Interconnector Net Transfer Capacity (MWs)**

Today	Import	Export	Remarks
Netherlands (BritNed)	1000	1000	Fully Available
France (IFA)	2000	2000	Fully Available
Belgium (Nemo)	1000	1000	Fully Available
Ireland (EWIC)	500	500	Fully Available
France (ElecLink)	0	0	On Outage
Northern Ireland (MOYLE)	450	450	Fully Available
Norway (NSL)	1400	1400	Fully Available
France (IFA2)	500	500	Partially Available
Viking Link	1430	1430	Fully Available
Ireland (GreenLink)	0	0	Not yet commissioned

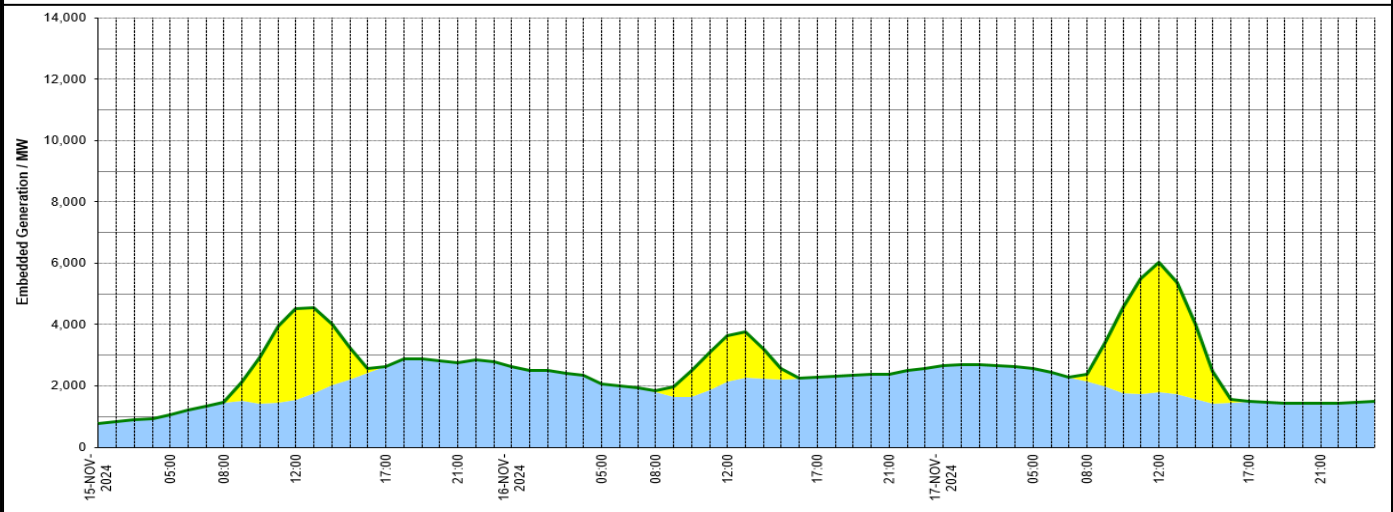
### Wind Power Forecast



### Expected embedded generation (MWs)

#### Embedded Generation Forecast

Embedded Generation Estimates														Last run: 16-Nov-2024 04:36:23			
	15-NOV-2024					16-NOV-2024					17-NOV-2024						
	05:00	08:00	12:00	17:00	21:00	00:00	05:00	08:00	12:00	17:00	21:00	00:00	05:00	08:00	12:00	17:00	21:00
Solar (MW)	0	17	2967	0	0	0	0	33	1501	0	0	0	0	208	4238	0	0
Wind (MW)	1051	1441	1555	2646	2772	2627	2065	1811	2150	2292	2386	2658	2578	2157	1800	1483	1419
STOR (MW)	0	0	0	0	0	0	0	0	0	0	0	0	0	0	0	0	0
<b>Total (MW)</b>	<b>1051</b>	<b>1458</b>	<b>4522</b>	<b>2646</b>	<b>2772</b>	<b>2627</b>	<b>2065</b>	<b>1844</b>	<b>3651</b>	<b>2292</b>	<b>2386</b>	<b>2658</b>	<b>2578</b>	<b>2365</b>	<b>6038</b>	<b>1483</b>	<b>1419</b>



Weather	Source	Commentary
Latest forecast (Summary)	<a href="#">Met Office</a> <a href="#">SEPA</a> <a href="#">Natural Resources Wales</a>	<p><b>Today:</b> Rather cloudy across England and Wales, with outbreaks of rain and drizzle slowly moving southwards through the day. Brighter for Scotland and Northern Ireland, with scattered showers. Showers falling as snow across parts of Scotland.</p> <p><b>Tonight:</b> Cloud and rain will clear southwards with scattered showers following, these most frequent in the north and west. Showers falling as snow for parts for Scotland. Turning chilly.</p>
General Weather Concerns e.g. wind, rain, snow, flooding, GB Weather Warnings	<a href="#">Met Office</a> <a href="#">Weather Warnings</a> <a href="#">SEPA</a> <a href="#">Natural Resources Wales</a>	<p><b>UK Weather Warnings</b> Yellow warning of snow and ice Areas affected: Grampian   Highlands &amp; Eilean Siar   Orkney &amp; Shetland</p> <p>Starts: 16:00 GMT on Sun 17 November</p> <p>Ends: 11:00 GMT on Mon 18 November</p>

Weather	Source	Commentary
		<p>Ice and some snow leading to slippery surfaces and difficult travel conditions.</p> <ul style="list-style-type: none"> <li>- Some roads and railways may be affected with longer journey times by road, bus and train services</li> <li>- Probably some icy patches on some untreated roads, pavements and cycle paths</li> <li>- Some injuries from slips and falls on icy surfaces</li> </ul> <p>Yellow warning of snow and ice Areas affected: Central, Tayside &amp; Fife   North East England   North West England   SW Scotland, Lothian Borders   Strathclyde   Yorkshire &amp; Humber</p> <p>Starts: 10:00 GMT on Mon 18 November</p> <p>Ends: 10:00 GMT on Tue 19 November</p> <p>A small chance of disruption from snow and ice.</p> <ul style="list-style-type: none"> <li>- There is a small chance of travel delays on roads with some stranded vehicles and passengers, along with delayed or cancelled rail and air travel</li> <li>- There is a slight chance that some rural communities could become cut off</li> <li>- There is a small chance that power cuts will occur and other services, such as mobile phone coverage, may be affected</li> <li>- A small chance of injuries from slips and falls on icy surfaces</li> <li>- There is a slight chance that bus and train services may be delayed or cancelled, with some road closures and longer journey times</li> <li>- A small chance that untreated pavements and cycle paths become impassable</li> </ul> <p><b>Flood Warnings</b></p> <p>7 flood warnings and 27 flood alerts issued for England.</p> <p>0 flood warning and 5 flood alerts issued for Scotland.</p> <p>0 flood warnings and 0 flood alerts issued for Wales.</p>

Contains public sector information licensed under the Open Government Licence v1.0

Further Information	
BM Reports	<a href="https://www.bmreports.com">https://www.bmreports.com</a>
System Balancing Reports	<a href="https://www.neso.energy/industry-information/industry-data-and-reports/system-balancing-reports">https://www.neso.energy/industry-information/industry-data-and-reports/system-balancing-reports</a>
Forecast Volumes and Costs	<a href="https://www.neso.energy/industry-information/industry-data-and-reports/forecast-volumes-and-costs">https://www.neso.energy/industry-information/industry-data-and-reports/forecast-volumes-and-costs</a>