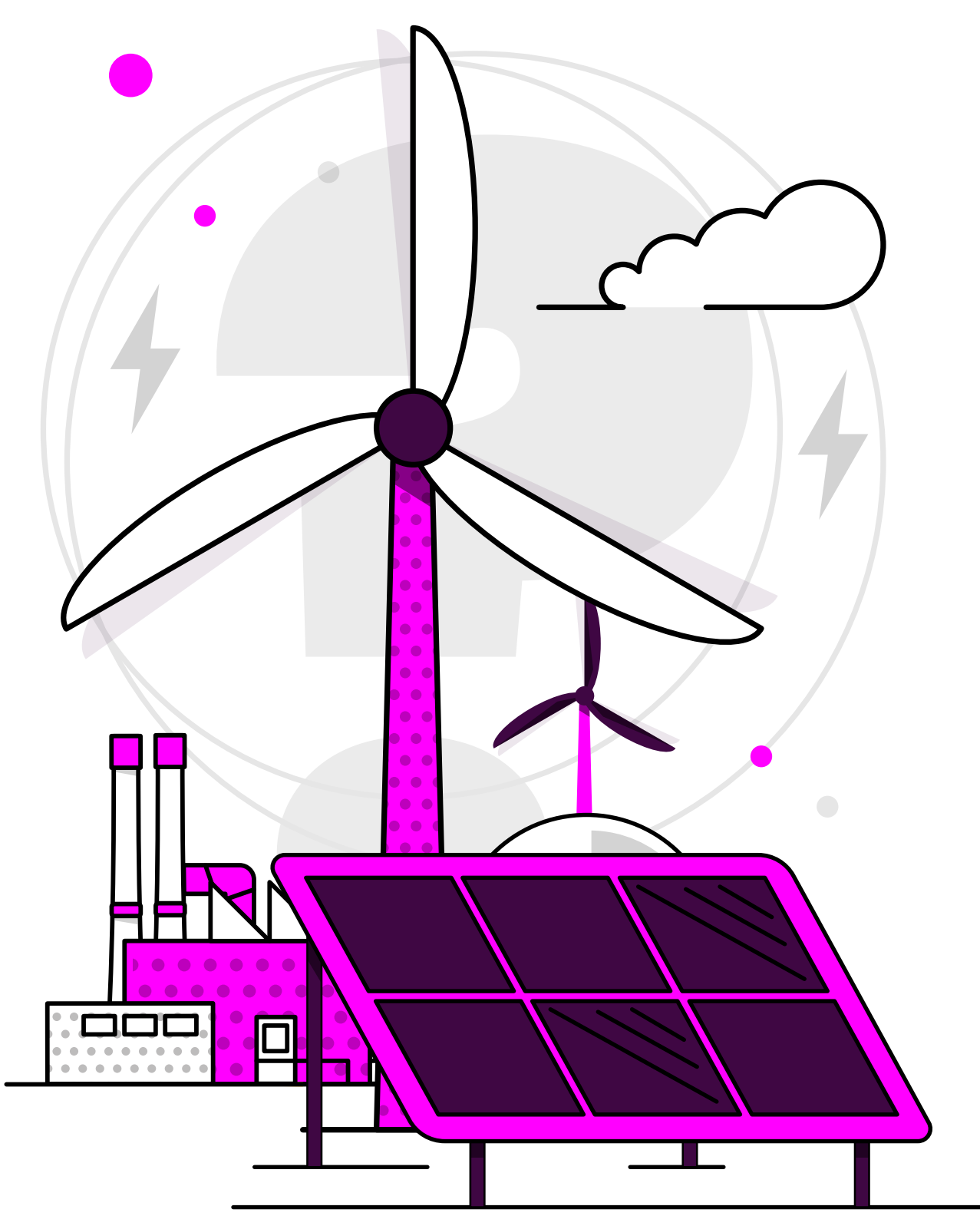


Britain's Energy Explained: October 2024

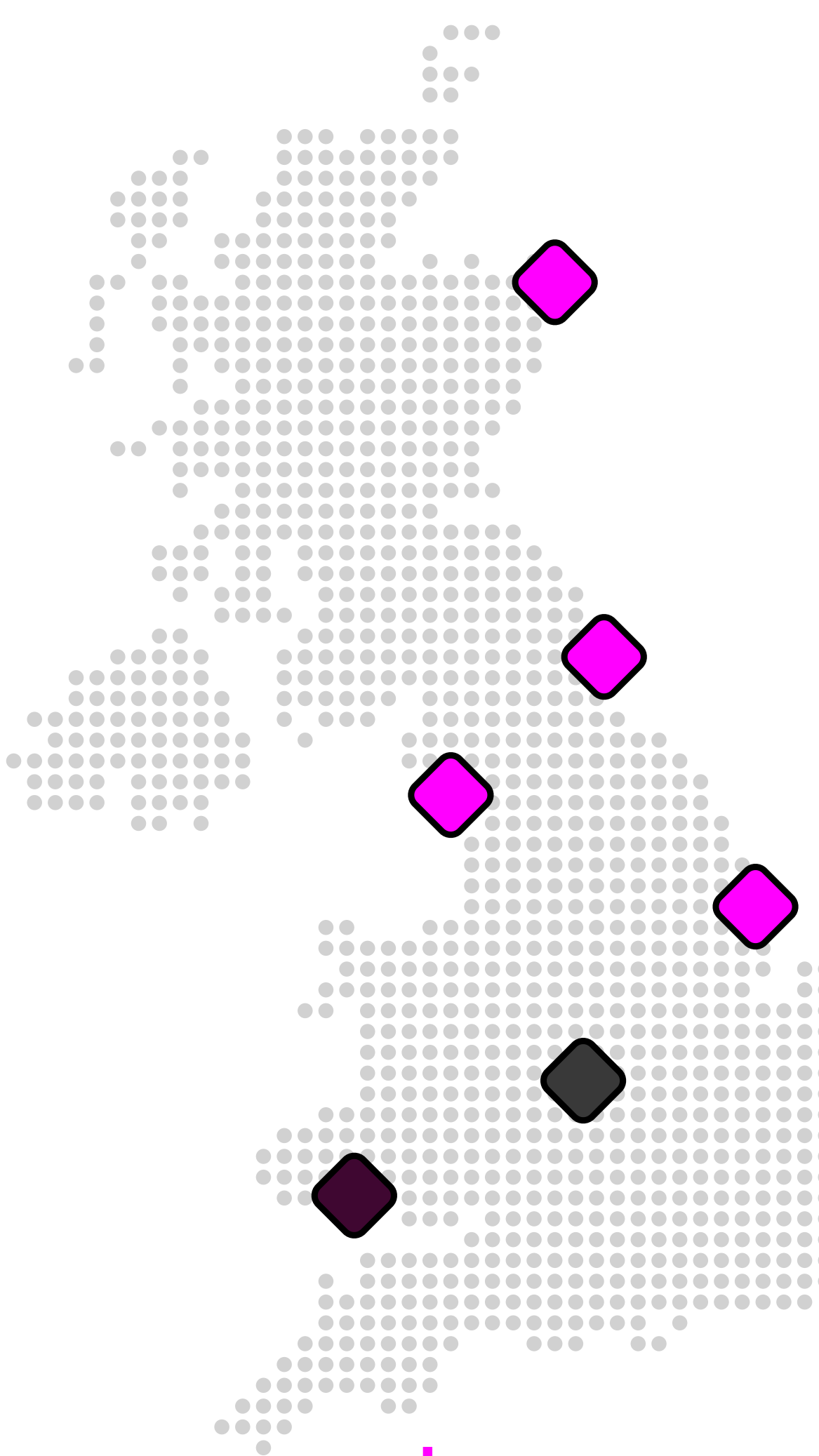


How was our electricity generated?



Source	Percentage	Change from previous month
Gas	29.5%	4.2% ▲
Wind	31.2%	5% ▲
Nuclear	13.3%	3% ▼
Biomass	8.1%	0.2% ▼
Coal	0%	0.3% ▼
Solar	3.7%	1.9% ▼
Imports	11.3%	3.5% ▼
Hydro	1.6%	0.2% ▼
Storage	1.3%	0.1% ▲

Where has our gas come from?*



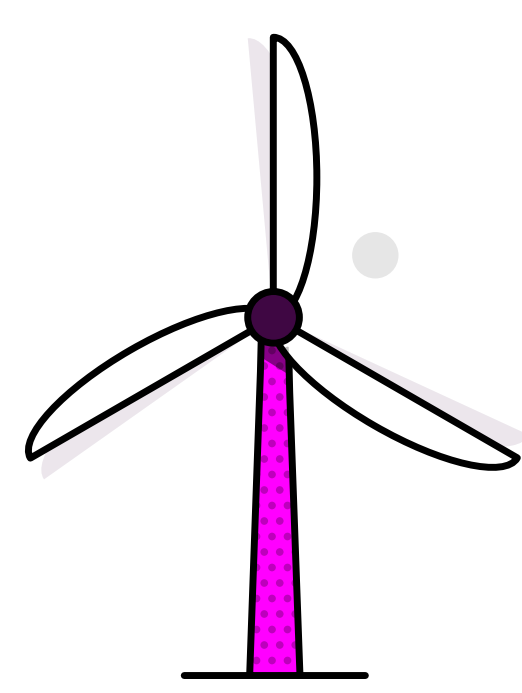
Entry Points	Percentage	Change from previous month
UK/Norwegian gas fields	90%	8% ▲
LNG imports	8%	3% ▲
European imports	0%	0%
Storage withdrawal	2%	11% ▼

Where is our gas used?

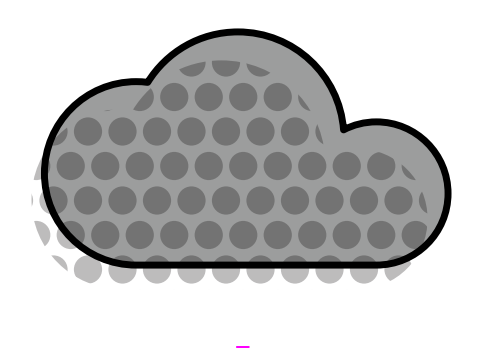
Usage Category	Percentage	Change from previous month
Distribution networks	56%	7% ▲
Power stations	21%	2% ▼
EU & Ireland exports	12%	11% ▼
Industrial	2%	0%
Storage	9%	6% ▲

*Gas data is yet to reconcile. For most up-to-date gas data, visit data.nationalgas.com

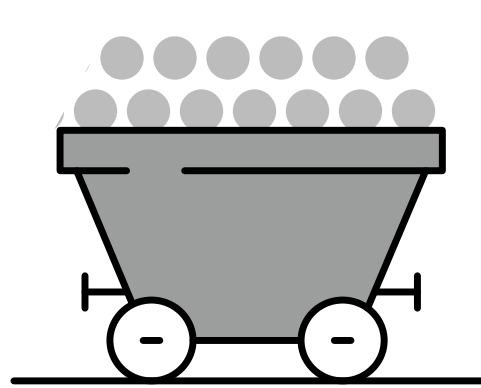
Carbon intensity of electricity



Zero carbon 51% of electricity came from zero carbon sources
83% peak zero carbon share

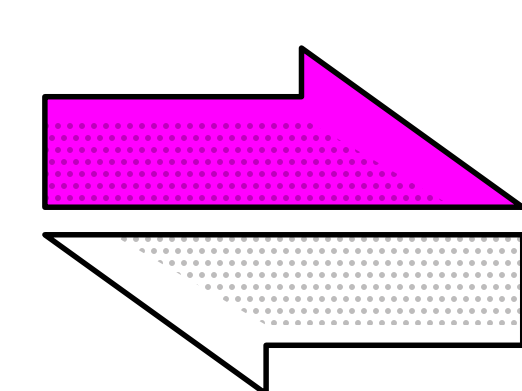


Carbon intensity 138 gCO₂/kWh average
Greenest time of the month 2pm on 5 October



Coal 0% use this month
This time 5 years ago coal usage was 1.3%
744 consecutive coal free hours

How much electricity we used



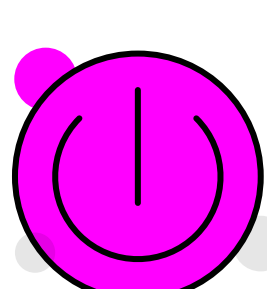
Imports & exports



Energy in 3155 GWh

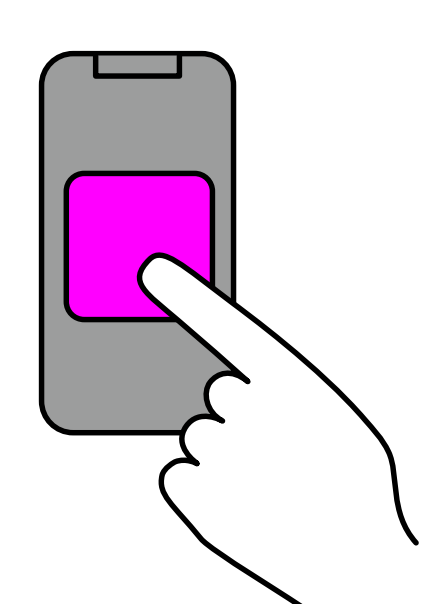
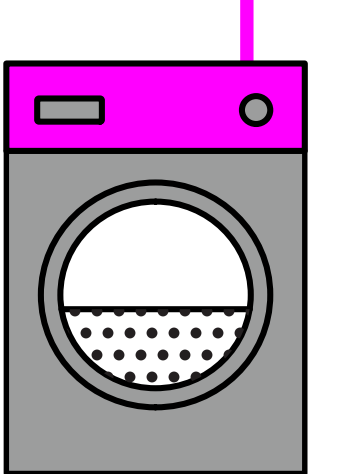


Energy out 641 GWh



Demand

22 TWh run through network (that's 22 billion washing machine cycles).
Peak demand time was 4pm on 28 October.



View in real-time

To view our data in real-time, please download the NESO app for Apple or Android. Or visit carbonintensity.org.uk