

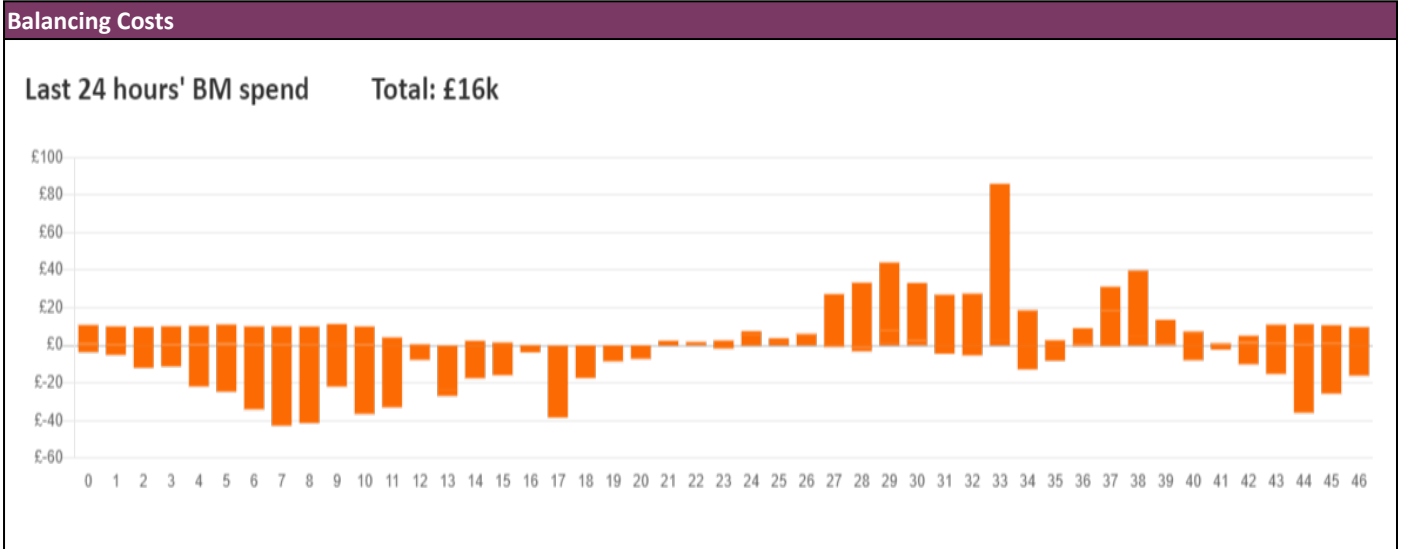
**NESO**  
**National Electricity**  
**Transmission**  
**System**  
Status report



NESO National Electricity Transmission System Status Report  
Tuesday 05 November 2024

| Today's High Level Risk Status Forecast for the next 24h |  |                |  |
|--|--|----------------|--|
| General Status   |  | Voltage        |  |
| Demand   |  | System Inertia |  |
| System Margins   |  | Weather        |  |
| Generation   |  | Transmission   |  |
| Active Constraints                                       |  |                |  |
| <a href="#">System Warning</a>                           |  |                |  |

|   |                  |         |
|---|------------------|---------|
| <a href="#">Today's Minimum De-Rated Margin</a> | 2,129 MW (SP 37) |         |
| Current BMU Largest Loss Risk                   | Generation       | 1300 MW |
|   | Demand           | 1050 MW |



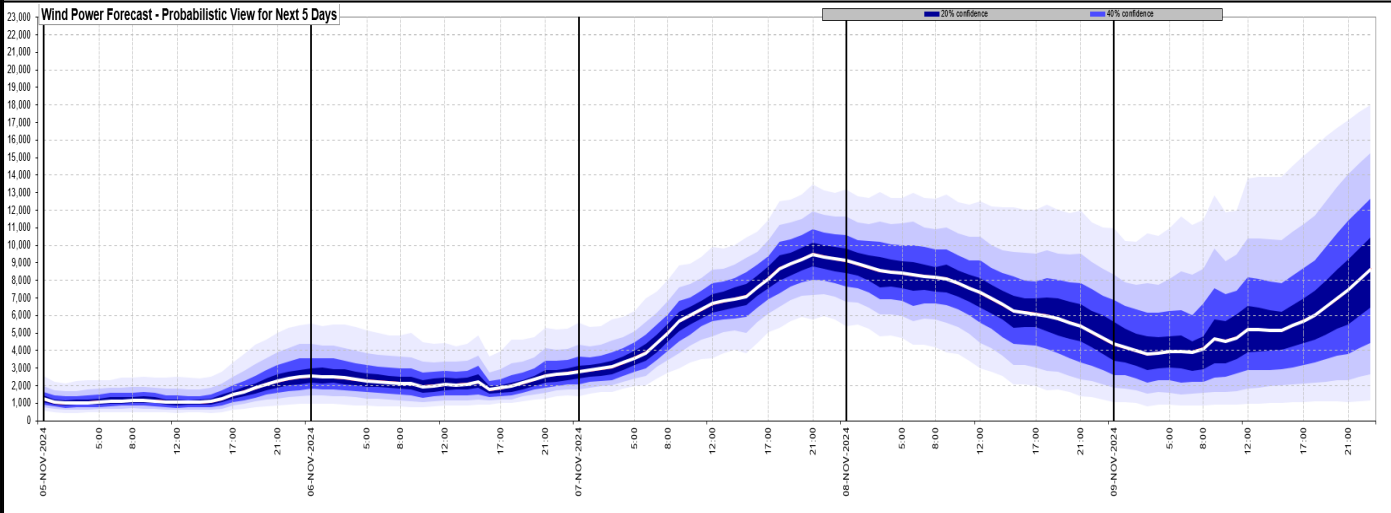
**Yesterday's Market Summary**

|                                       |                   |
|---------------------------------------|-------------------|
| <a href="#">Cash Out Price (Max)</a>  | 195 £/MWh (SP 35) |
| <a href="#">Cash Out Price (Min)</a>  | 63 £/MWh (SP 15)  |
| <a href="#">Peak Demand Yesterday</a> | 40,325 MW         |
| <a href="#">Minimum Demand</a>        | 20,500 MW         |

**Interconnector Net Transfer Capacity (MWs)**

| Today                    | Import | Export | Remarks                    |
|--------------------------|--------|--------|----------------------------|
| Netherlands (BritNed)    | 1000   | 1000   | Fully Available            |
| France (IFA)             | 2000   | 2000   | Fully Available            |
| Belgium (Nemo)           | 1000   | 1000   | Fully Available            |
| Ireland (EWIC)           | 500    | 500    | Fully Available            |
| France (ElecLink)        | 0      | 0      | Unplanned Outage           |
| Northern Ireland (MOYLE) | 450    | 450    | Fully Available            |
| Norway (NSL)             | 1400   | 1400   | Fully Available            |
| France (IFA2)            | 0      | 0      | Unplanned Outage           |
| Viking Link              | 1400   | 1400   | Outage from 12:00 to 16:00 |
| Ireland (GreenLink)      | 0      | 0      | Not yet commissioned       |

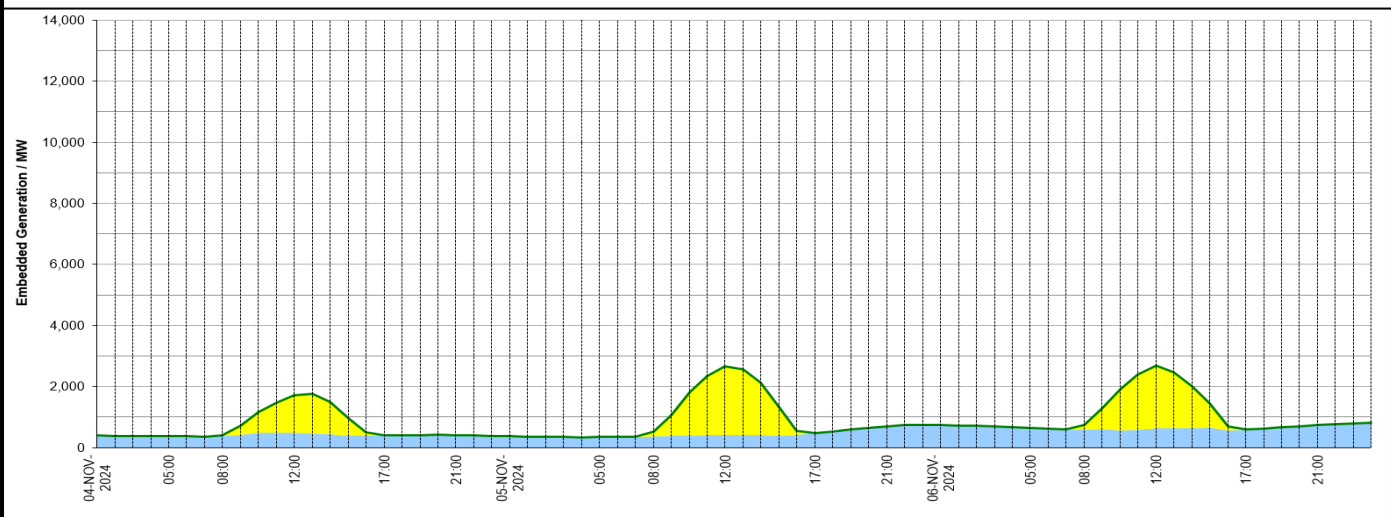
### Wind Power Forecast



### Expected embedded generation (MWs)

#### Embedded Generation Forecast

| Embedded Generation Estimates |             |            |             |            |             |            |            |            |             |            |            |            |            |            | Last run: 05-Nov-2024 04:32:49 |            |            |
|-------------------------------|-------------|------------|-------------|------------|-------------|------------|------------|------------|-------------|------------|------------|------------|------------|------------|--------------------------------|------------|------------|
|                               | 04-NOV-2024 |            |             |            | 05-NOV-2024 |            |            |            | 06-NOV-2024 |            |            |            |            |            |                                |            |            |
|                               | 05:00       | 08:00      | 12:00       | 17:00      | 21:00       | 00:00      | 05:00      | 08:00      | 12:00       | 17:00      | 21:00      | 00:00      | 05:00      | 08:00      | 12:00                          | 17:00      | 21:00      |
| Solar (MW)                    | 0           | 22         | 1229        | 0          | 0           | 0          | 0          | 147        | 2250        | 0          | 0          | 0          | 0          | 137        | 2052                           | 0          | 0          |
| Wind (MW)                     | 372         | 385        | 490         | 394        | 400         | 378        | 341        | 372        | 418         | 481        | 691        | 745        | 639        | 594        | 627                            | 588        | 744        |
| STOR (MW)                     | 0           | 0          | 0           | 0          | 0           | 0          | 0          | 0          | 0           | 0          | 0          | 0          | 0          | 0          | 0                              | 0          | 0          |
| <b>Total (MW)</b>             | <b>372</b>  | <b>407</b> | <b>1719</b> | <b>394</b> | <b>400</b>  | <b>378</b> | <b>341</b> | <b>519</b> | <b>2668</b> | <b>481</b> | <b>691</b> | <b>745</b> | <b>639</b> | <b>731</b> | <b>2679</b>                    | <b>588</b> | <b>744</b> |



| Weather   | Source  | Commentary   |
|---|---|--|
| Latest forecast (Summary)   | <a href="#">Met Office</a><br><a href="#">SEPA</a><br><a href="#">Natural Resources Wales</a>                                     | <p><b>Today:</b><br/>A mostly dry day on Tuesday but staying cloudy with the best of any brightness to the lee of high ground, mainly in the north. Any drizzle will be confined to hills in the west. Light southerly winds.</p> <p><b>Tonight:</b><br/>Staying cloudy for most overnight with patchy drizzle continuing over hills in the west. Some clear spells possible allowing some mist and fog by dawn.</p> |
| General Weather Concerns e.g. wind, rain, snow, flooding, GB Weather Warnings | <a href="#">Met Office</a><br><a href="#">Weather Warnings</a><br><a href="#">SEPA</a><br><a href="#">Natural Resources Wales</a> | <p><b>UK Weather Warnings</b><br/>No weather warnings are in force for the UK</p> <p><b>Flood Warnings</b><br/>0 flood warnings and 1 flood alerts issued for England.<br/>0 flood warning and 0 flood alerts issued for Scotland.<br/>0 flood warnings and 0 flood alerts issued for Wales.</p>   |

| Further Information        |   |
|----------------------------|---|
| BM Reports                 | <a href="https://www.bmreports.com">https://www.bmreports.com</a>   |
| System Balancing Reports   | <a href="https://www.neso.energy/industry-information/industry-data-and-reports/system-balancing-reports">https://www.neso.energy/industry-information/industry-data-and-reports/system-balancing-reports</a>     |
| Forecast Volumes and Costs | <a href="https://www.neso.energy/industry-information/industry-data-and-reports/forecast-volumes-and-costs">https://www.neso.energy/industry-information/industry-data-and-reports/forecast-volumes-and-costs</a> |