

**NESO**  
**National Electricity**  
**Transmission**  
**System**  
Status report

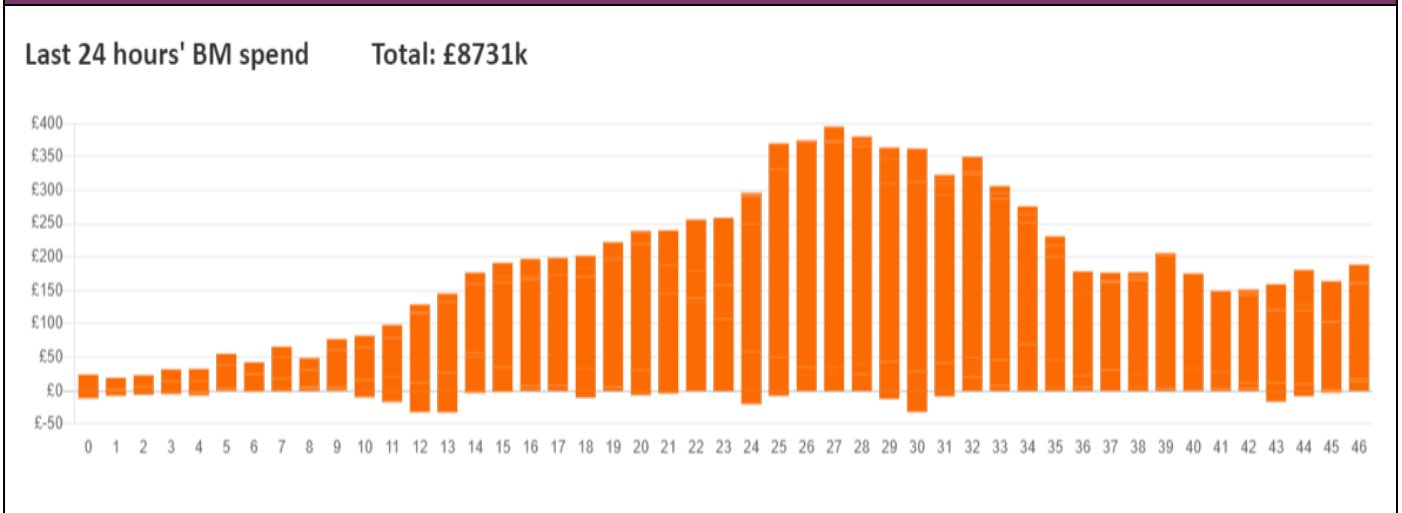


NESO National Electricity Transmission System Status Report  
Sunday 27 October 2024

Today's High Level Risk Status Forecast for the next 24h			
General Status		Voltage	
Demand		System Inertia	
System Margins		Weather	
Generation		Transmission	
Active Constraints			
<a href="#">System Warning</a>			

<a href="#">Today's Minimum De-Rated Margin</a>	13,502MW (SP 38)	
Current BMU Largest Loss Risk	Generation	1400 MW
	Demand	1000 MW

Balancing Costs



Yesterday's Market Summary

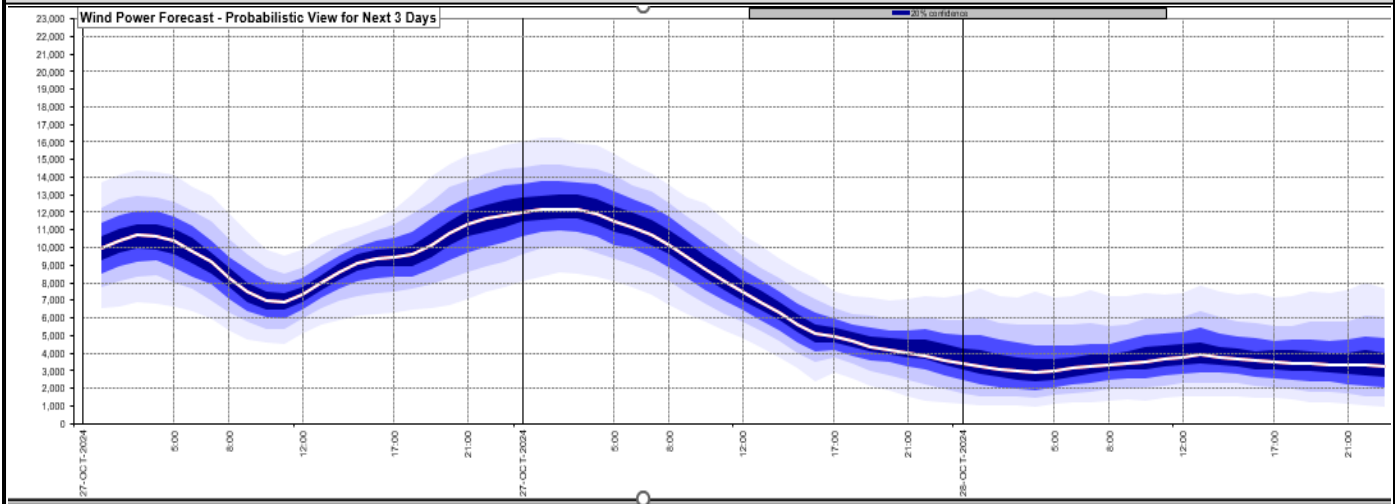
<a href="#">Cash Out Price (Max)</a>	124 £/MWh (SP 35, 36,37,39)
<a href="#">Cash Out Price (Min)</a>	-19.68 £/MWh (SP 24,25)
<a href="#">Peak Demand Yesterday</a>	31,491 MW
<a href="#">Minimum Demand</a>	18,500 MW

Interconnector

Net Transfer Capacity (MWs)

Today	Import	Export	Remarks
Netherlands (BritNed)	1000	1000	Fully Available
France (IFA)	2000	2000	Fully Available
Belgium (Nemo)	1000	1000	Fully Available
Ireland (EWIC)	500	500	Fully Available
France (ElecLink)	0	0	Unplanned Outage
Northern Ireland (MOYLE)	450	450	Fully Available
Norway (NSL)	1400	1400	Fully Available
France (IFA2)	0	0	Unplanned Outage
Viking Link	1400	1400	Fully Available
Ireland (GreenLink)	0	0	Not yet commissioned

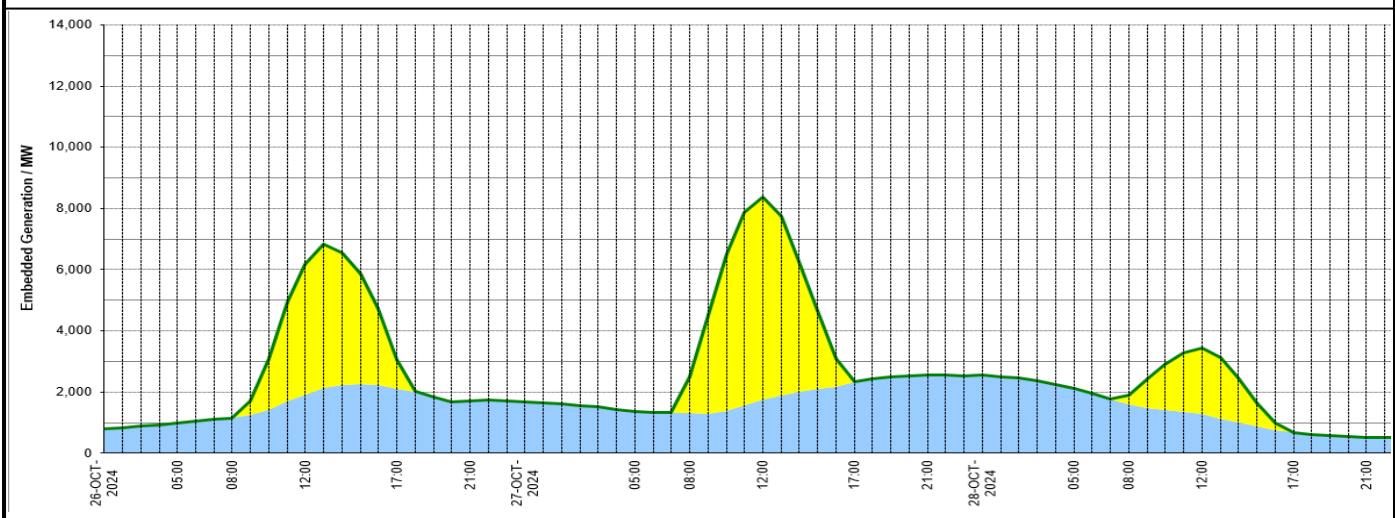
### Wind Power Forecast



### Expected embedded generation (MWs)

#### Embedded Generation Forecast

	26-OCT-2024					27-OCT-2024					28-OCT-2024						
	05:00	08:00	12:00	17:00	21:00	00:00	05:00	08:00	12:00	17:00	21:00	00:00	05:00	08:00	12:00	17:00	21:00
Solar (MW)	0	0	4240	982	0	0	0	1183	6620	28	0	0	0	295	2163	0	0
Wind (MW)	1000	1147	1929	2091	1700	1666	1367	1306	1767	2317	2572	2550	2115	1597	1287	682	518
STOR (MW)	0	0	0	0	0	0	0	0	0	0	0	0	0	0	0	0	0
<b>Total (MW)</b>	<b>1000</b>	<b>1147</b>	<b>6169</b>	<b>3073</b>	<b>1700</b>	<b>1666</b>	<b>1367</b>	<b>2489</b>	<b>8387</b>	<b>2345</b>	<b>2572</b>	<b>2550</b>	<b>2115</b>	<b>1892</b>	<b>3450</b>	<b>682</b>	<b>518</b>



Weather	Source	Commentary
Latest forecast (Summary)	<a href="#">Met Office</a> <a href="#">SEPA</a> <a href="#">Natural Resources Wales</a>	<b>Today:</b> Dry, chilly and bright in the south on Sunday. Heavy rain will spread into northern areas through the morning, slowly moving south through the day and overnight into Monday. <b>Tonight:</b> Weakening band of rain will move southeast overnight leaving clear spells and showers across coasts in the north. Turning cooler under clear skies with mist and fog patches developing across the south, and a frost in the north.
General Weather Concerns e.g. wind, rain, snow, flooding, GB Weather Warnings	<a href="#">Met Office</a> <a href="#">Weather Warnings</a> <a href="#">SEPA</a> <a href="#">Natural Resources Wales</a>	<b>UK Weather Warnings</b> No weather warnings are in force for the UK <b>Flood Warnings</b> 0 flood warnings and 15 flood alerts issued for England.  0 flood warning and 0 flood alerts issued for Scotland.  0 flood warnings and 0 flood alerts issued for Wales.

Contains public sector information licensed under the Open Government Licence v1.0

Further Information	
BM Reports	<a href="https://www.bmreports.com">https://www.bmreports.com</a>
System Balancing Reports	<a href="https://www.neso.energy/industry-information/industry-data-and-reports/system-balancing-reports">https://www.neso.energy/industry-information/industry-data-and-reports/system-balancing-reports</a>
Forecast Volumes and Costs	<a href="https://www.neso.energy/industry-information/industry-data-and-reports/forecast-volumes-and-costs">https://www.neso.energy/industry-information/industry-data-and-reports/forecast-volumes-and-costs</a>