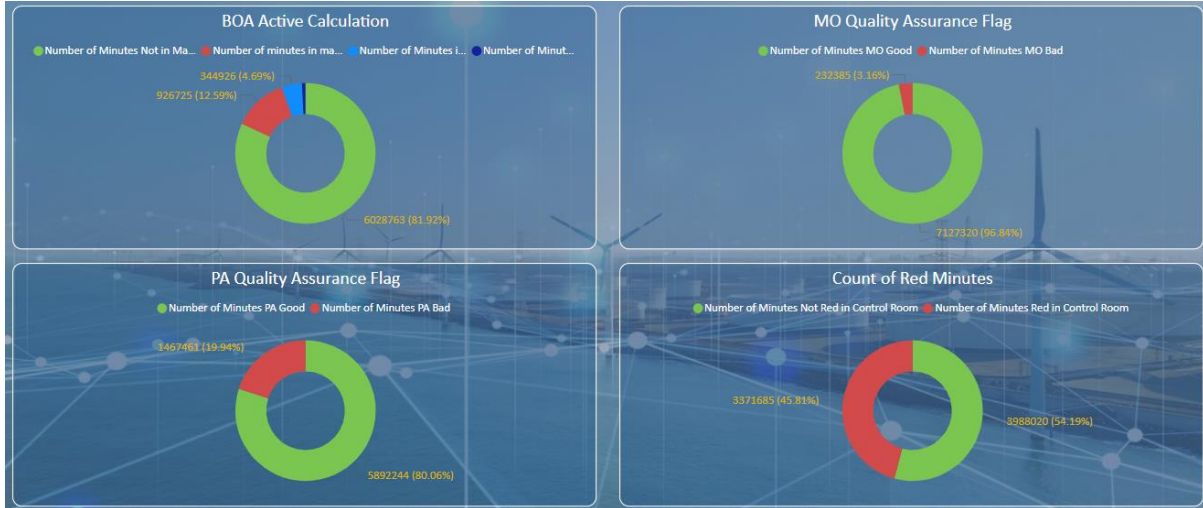


# Power Available Summary Report

Date Range: August 2024



## Commentary:

- From perspective of all BMUs, the PA Quality Assurance Flag was approximately 80% and the percentage of red minutes seen in the control room was approximately 46%
- 44 Good BMUs, 38 Moderate BMUs and 83 Poor BMUs
  - o Good: Percentage of Minutes not Red for individual BMU  $\geq$  90%
  - o Moderate: Percentage of Minutes not Red for individual BMU between 70% and 89%
  - o Poor: Percentage of Minutes not Red for individual BMU less than 70%