

**NESO**  
**National Electricity**  
**Transmission**  
**System**  
Status report

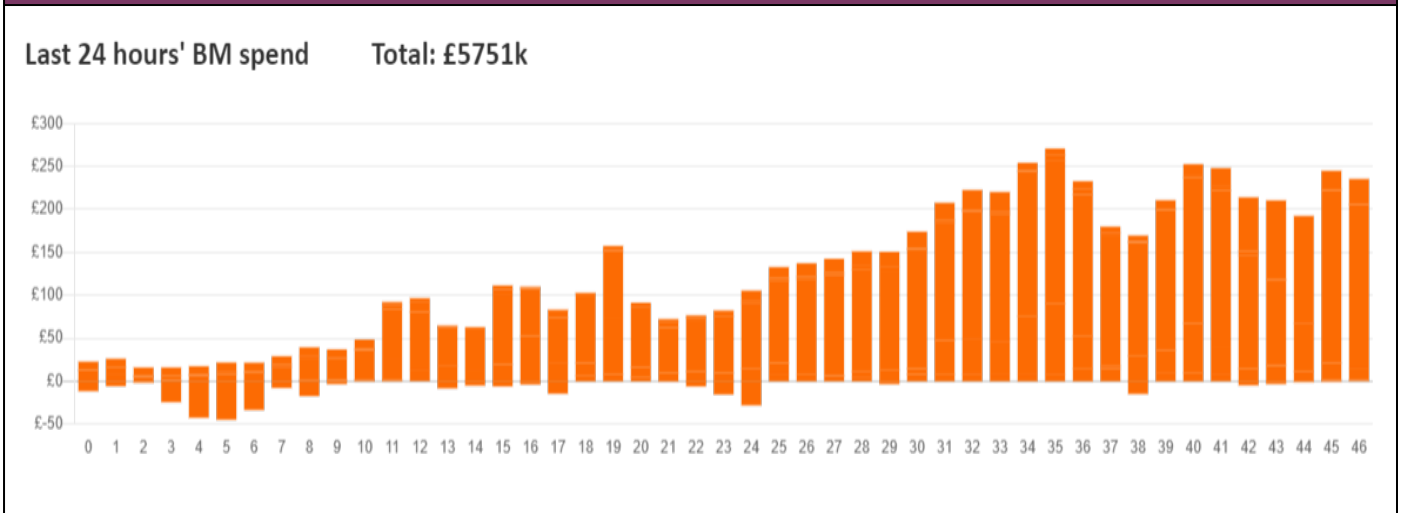


NESO National Electricity Transmission System Status Report  
Wednesday 16 October 2024

Today's High Level Risk Status Forecast for the next 24h			
General Status		Voltage	
Demand		System Inertia	
System Margins		Weather	
Generation		Transmission	
Active Constraints			
<a href="#">System Warning</a>			

<a href="#">Today's Minimum De-Rated Margin</a>	9871MW (SP 38)	
Current BMU Largest Loss Risk	Generation	1300 MW
	Demand	1050 MW

Balancing Costs



Yesterday's Market Summary

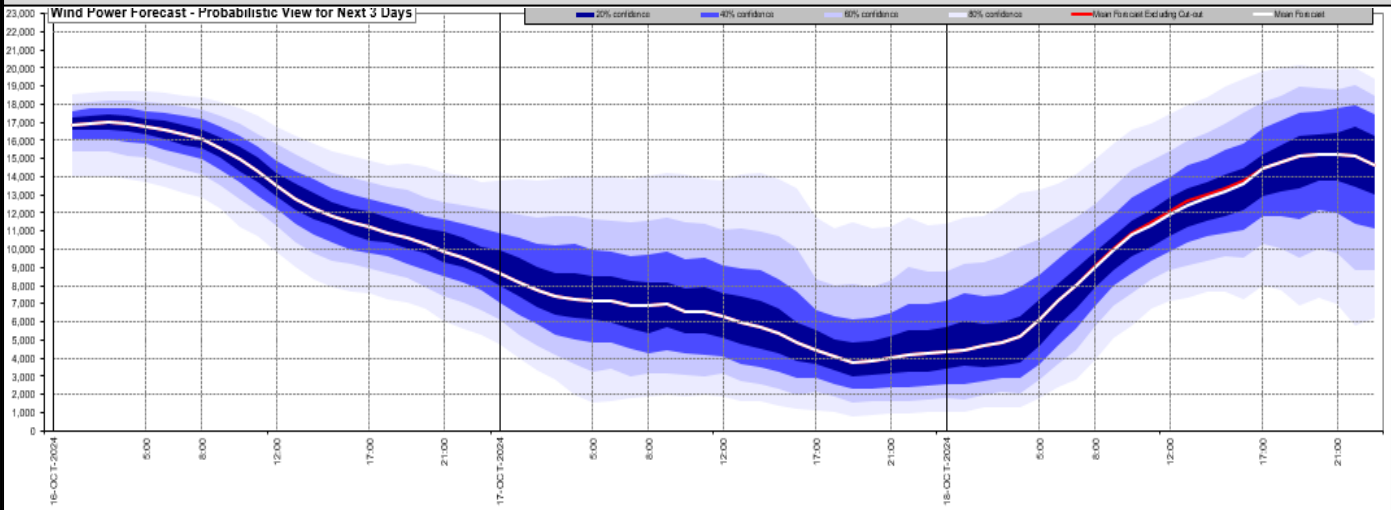
<a href="#">Cash Out Price (Max)</a>	£126.50 /MWh (SP 13,14)
<a href="#">Cash Out Price (Min)</a>	£0/MWh (SP 46)
<a href="#">Peak Demand Yesterday</a>	37,207 MW
<a href="#">Minimum Demand</a>	19,000 MW

Interconnector

Net Transfer Capacity (MWs)

Today	Import	Export	Remarks
Netherlands (BritNed)	1000	1000	Fully Available
France (IFA)	1000	1000	Partially Available - planned outage
Belgium (Nemo)	1000	1000	Fully Available
Ireland (EWIC)	500	500	Fully Available
France (ElecLink)	0	0	Unplanned Outage
Northern Ireland (MOYLE)	450	450	Fully Available
Norway (NSL)	1400	1400	Fully Available
France (IFA2)	0	0	Unplanned Outage
Viking Link	1400	1400	Fully Available
Ireland (GreenLink)	0	0	Not yet commissioned

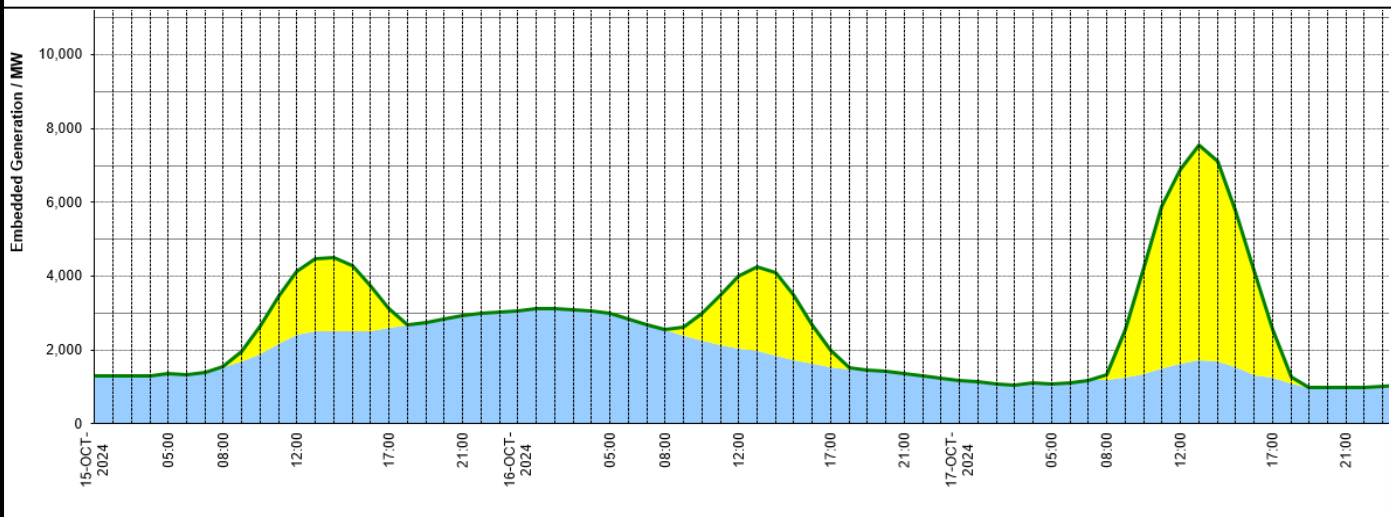
### Wind Power Forecast



### Expected embedded generation (MW)

#### Embedded Generation Forecast

	15-OCT-2024					16-OCT-2024					17-OCT-2024						
	05:00	08:00	12:00	17:00	21:00	00:00	05:00	08:00	12:00	17:00	21:00	00:00	05:00	08:00	12:00	17:00	21:00
Solar (MW)	0	2	1712	514	0	0	0	23	1941	436	0	0	0	155	5271	1300	0
Wind (MW)	1356	1543	2403	2595	2920	3076	2988	2534	2048	1549	1373	1189	1085	1180	1619	1244	992
STOR (MW)	0	0	0	0	0	0	0	0	0	0	0	0	0	0	0	0	0
<b>Total (MW)</b>	<b>1356</b>	<b>1545</b>	<b>4115</b>	<b>3109</b>	<b>2920</b>	<b>3076</b>	<b>2988</b>	<b>2557</b>	<b>3989</b>	<b>1985</b>	<b>1373</b>	<b>1189</b>	<b>1085</b>	<b>1335</b>	<b>6890</b>	<b>2544</b>	<b>992</b>



Weather	Source	Commentary
Latest forecast (Summary)	<a href="#">Met Office</a> <a href="#">SEPA</a> <a href="#">Natural Resources Wales</a>	<p><b>Today:</b> Further outbreaks of heavy and thundery rain pushing northeastwards across the UK. Some localised flooding possible, mainly focused in the west. Temperatures above average, feeling warm in any sunshine.</p> <p><b>Tonight:</b> Rather cloudy overnight with outbreaks of heavy and perhaps thundery rain pushing north and eastwards across the UK. The far north of Scotland though remaining dry until after dawn with some clear spells. A mild night for most.</p>
General Weather Concerns e.g. wind, rain, snow, flooding, GB Weather Warnings	<a href="#">Met Office</a> <a href="#">Weather Warnings</a> <a href="#">SEPA</a> <a href="#">Natural Resources Wales</a>	<p><b>UK Weather Warnings</b> Yellow warning of rain Areas affected: North West England   South West England   Wales   West Midlands</p> <p>ACTIVE Started at: 18:00 BST on Tue 15 October Ends: 12:00 BST on Wed 16 October Spells of heavy rain on Tuesday night and Wednesday may lead to some travel disruption and flooding in places</p> <ul style="list-style-type: none"> <li>- Spray and flooding could lead to difficult driving conditions and some road closures</li> <li>- There is a small chance that homes and businesses could be flooded, causing damage to some buildings</li> </ul>

Weather	Source	Commentary
		<ul style="list-style-type: none"> <li>- Where flooding occurs, there is a slight chance of delays or cancellations to train and bus services</li> <li>- There is a small chance that some communities will be temporarily cut off by flooded roads</li> <li>- There is a slight chance of power cuts and loss of other services to some homes and businesses</li> </ul> <p>Yellow warning of rain Areas affected: Northern Ireland</p> <p>ACTIVE Started at: 00:00 BST on Wed 16 October Ends: 06:00 BST on Wed 16 October Spells of heavy rain may bring some disruption to parts of southeast Northern Ireland</p> <ul style="list-style-type: none"> <li>- Spray and flooding on roads probably making journey times longer</li> <li>- Bus and train services probably affected with journey times taking longer</li> <li>- A small chance of flooding of a few homes and businesses is likely</li> <li>- A small chance of some interruption to power supplies and other services</li> </ul> <hr/> <p><b>Flood Warnings</b></p> <p>0 flood warnings and 55 flood alerts issued for England.</p> <p>0 flood warning and 1 flood alerts issued for Scotland.</p> <p>0 flood warnings and 0 flood alerts issued for Wales.</p>

Contains public sector information licensed under the Open Government Licence v1.0

Further Information	
BM Reports	<a href="https://www.bmreports.com">https://www.bmreports.com</a>
System Balancing Reports	<a href="https://www.neso.energy/industry-information/industry-data-and-reports/system-balancing-reports">https://www.neso.energy/industry-information/industry-data-and-reports/system-balancing-reports</a>
Forecast Volumes and Costs	<a href="https://www.neso.energy/industry-information/industry-data-and-reports/forecast-volumes-and-costs">https://www.neso.energy/industry-information/industry-data-and-reports/forecast-volumes-and-costs</a>