

**National Electricity
Transmission System Status Report**

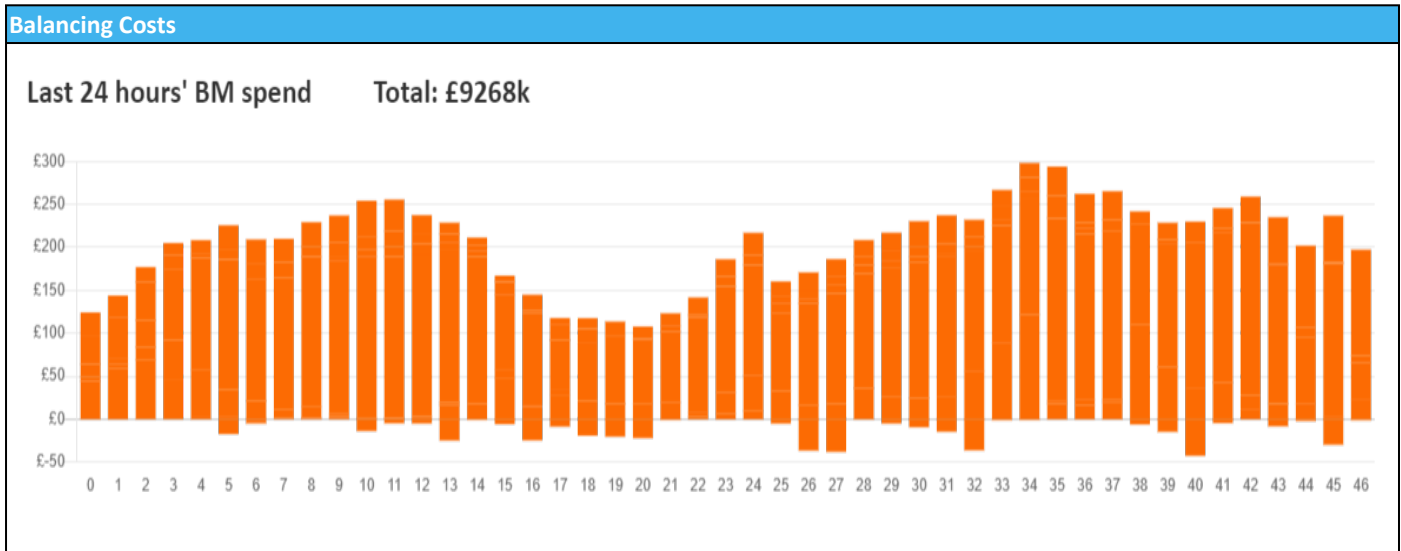


nationalgridESO

National Electricity Transmission System Status Report
Friday 27 September 2024

Today's High Level Risk Status Forecast for the next 24h			
General Status		Voltage	
Demand		System Inertia	
System Margins		Weather	
Generation		Transmission	
Active Constraints			
System Warning			

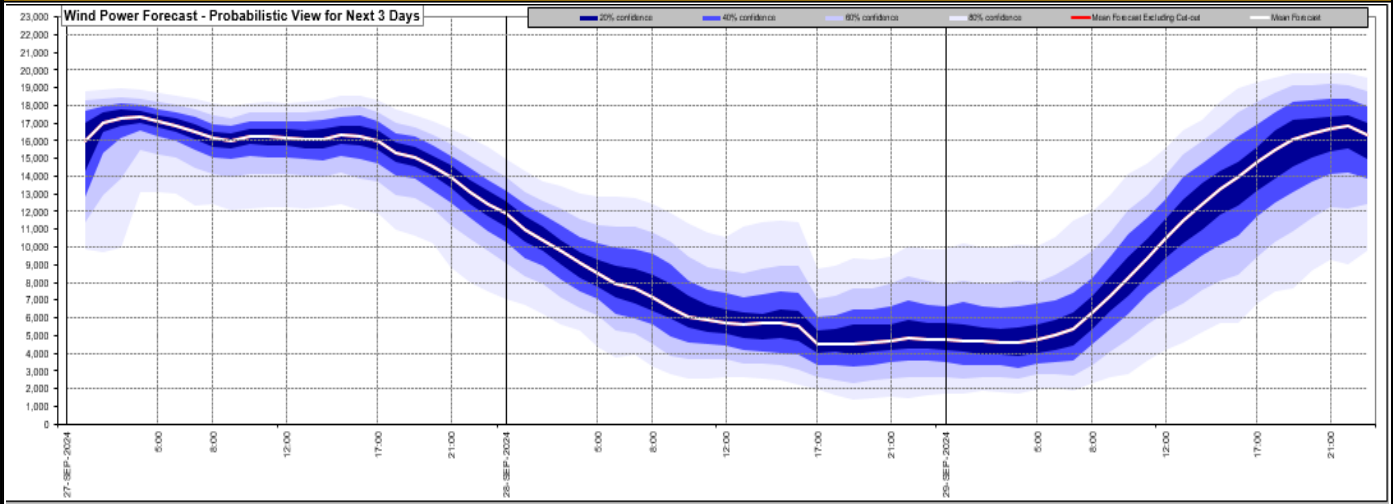
Today's Minimum De-Rated Margin	11,968 (SP 47)	
Current BMU Largest Loss Risk	Generation	1500 MW
	Demand	560 MW



Yesterday's Market Summary	
Cash Out Price (Max)	£105.9 /MWh (SP 37,39)
Cash Out Price (Min)	£-28.48 /MWh (SP 48)
Peak Demand Yesterday	32,187 MW
Minimum Demand	17,430 MW

Interconnector Net Transfer Capacity (MWs)			
Today	Import	Export	Remarks
Netherlands (BritNed)	1000	1000	Fully Available
France (IFA)	1000	1000	Partially Available - planned outage
Belgium (Nemo)	0	0	Planned Outage
Ireland (EWIC)	500	500	Fully Available
France (ElecLink)	0	0	Unplanned Outage
Northern Ireland (MOYLE)	450	450	Fully Available
Norway (NSL)	1400	1400	Fully Available
France (IFA2)	0	0	Unplanned Outage
Viking Link	1400	1400	Fully Available
Ireland (GreenLink)	0	0	Not yet commissioned

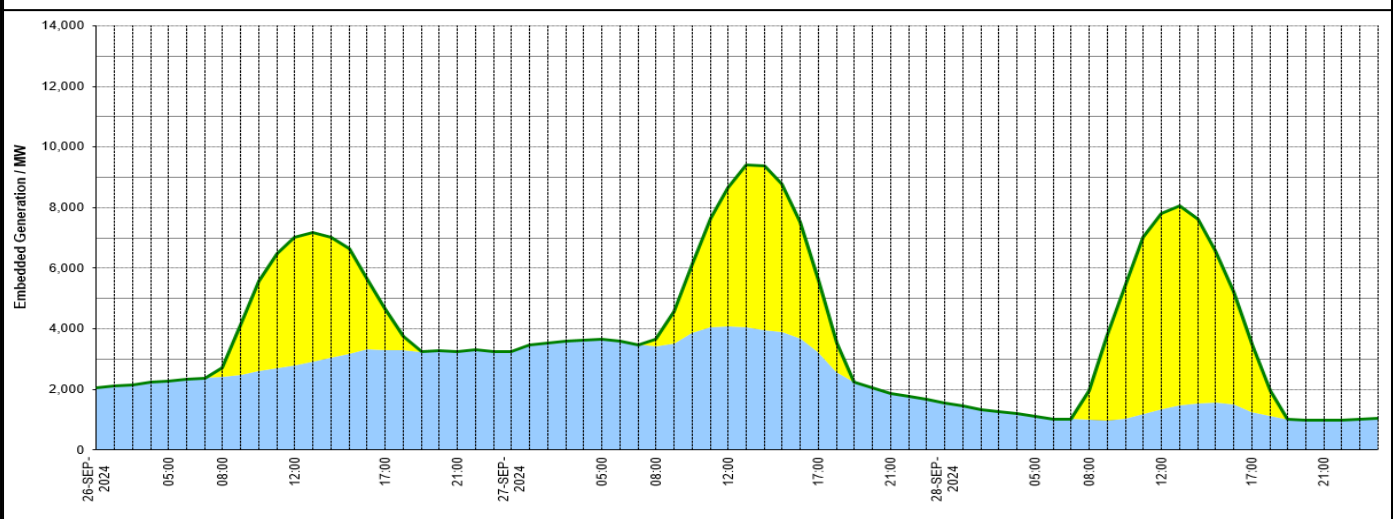
Wind Power Forecast



Expected embedded generation (MWs)

Embedded Generation Forecast

Embedded Generation Estimates													Last run: 27-Sep-2024 02:33:25				
	26-SEP-2024					27-SEP-2024					28-SEP-2024						
	05:00	08:00	12:00	17:00	21:00	00:00	05:00	08:00	12:00	17:00	21:00	00:00	05:00	08:00	12:00	17:00	21:00
Solar (MW)	0	319	4239	1375	0	0	0	241	4590	2388	0	0	0	978	6460	2242	0
Wind (MW)	2266	2412	2795	3292	3262	3263	3653	3424	4069	3233	1873	1564	1112	990	1353	1262	986
STOR (MW)	0	0	0	0	0	0	0	0	0	0	0	0	0	0	0	0	0
Total (MW)	2266	2731	7034	4667	3262	3263	3653	3665	8659	5621	1873	1564	1112	1968	7813	3504	986



Weather	Source	Commentary
Latest forecast (Summary)	Met Office SEPA Natural Resources Wales	<p>Today: Morning heavy rain clearing central and southern parts of the UK. Then a bright day for many, with sunny spells and scattered showers. A colder feeling day than of late, especially in the south with a brisk northerly wind.</p> <p>Tonight: Showers tending to become confined to the northwest through the evening and overnight. Many areas dry, with prolonged clear spells. A chilly night to come, with a patchy frost possible.</p>
General Weather Concerns e.g. wind, rain, snow, flooding, GB Weather Warnings	Met Office Weather Warnings SEPA Natural Resources Wales	<p>UK Weather Warnings Yellow warning of rain Areas affected: East Midlands East of England London & South East England South West England Wales West Midlands</p> <p>Started at: 06:00 BST on Thu 26 September Ends: 09:00 BST on Fri 27 September Heavy rain will bring the potential for some flooding and disruption to transport.</p>

Weather	Source	Commentary
		<p>Amber warning of rain Areas affected: East Midlands East of England London & South East England South West England West Midlands</p> <p>Started at: 18:00 BST on Thu 26 September Ends: 06:00 BST on Fri 27 September Heavy rain is likely to cause flooding and transport disruption this evening and overnight.</p>
		<p>Flood Warnings 60 flood warnings and 120 flood alerts issued for England.</p> <p>0 flood warnings and 0 flood alerts issued for Scotland.</p> <p>0 flood warnings and 8 flood alerts issued for Wales.</p>

Contains public sector information licensed under the Open Government Licence v1.0

Further Information	
BM Reports	https://www.bmreports.com
System Balancing Reports	https://www.nationalgrideso.com/industry-information/industry-data-and-reports/system-balancing-reports
Forecast Volumes and Costs	https://www.nationalgrideso.com/industry-information/industry-data-and-reports/forecast-volumes-and-costs