

# National Electricity Transmission System Status Report

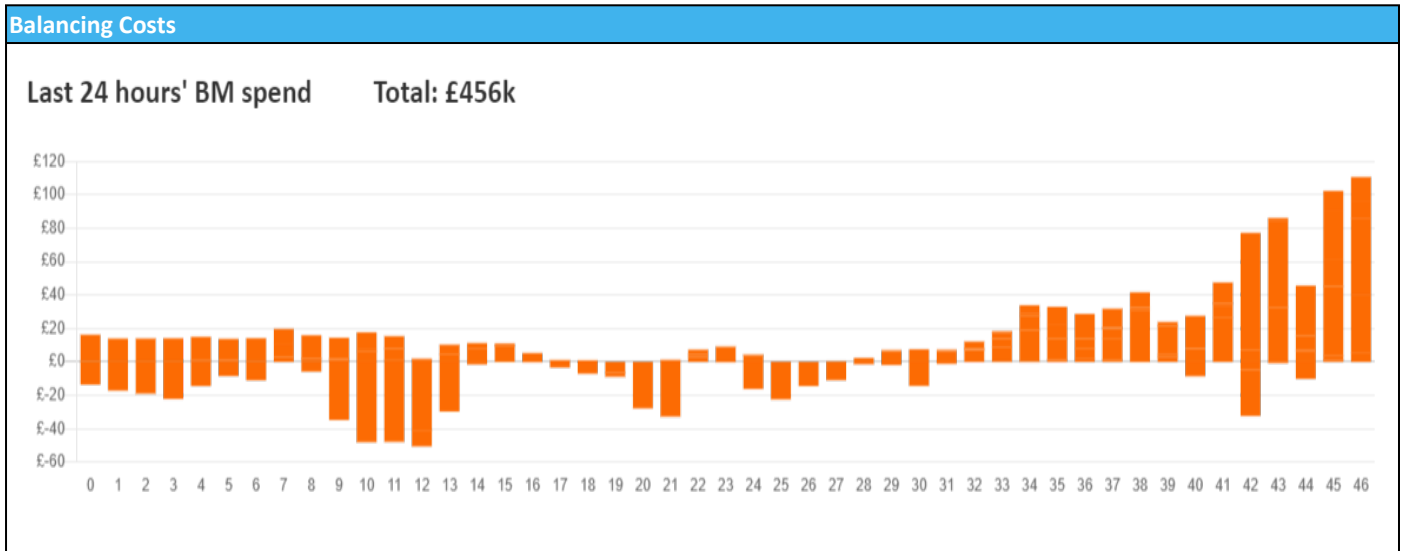


nationalgridESO

**National Electricity Transmission System Status Report**  
Thursday 26 September 2024

Today's High Level Risk Status Forecast for the next 24h			
General Status		Voltage	
Demand		System Inertia	
System Margins		Weather	
Generation		Transmission	
Active Constraints			
<a href="#">System Warning</a>			

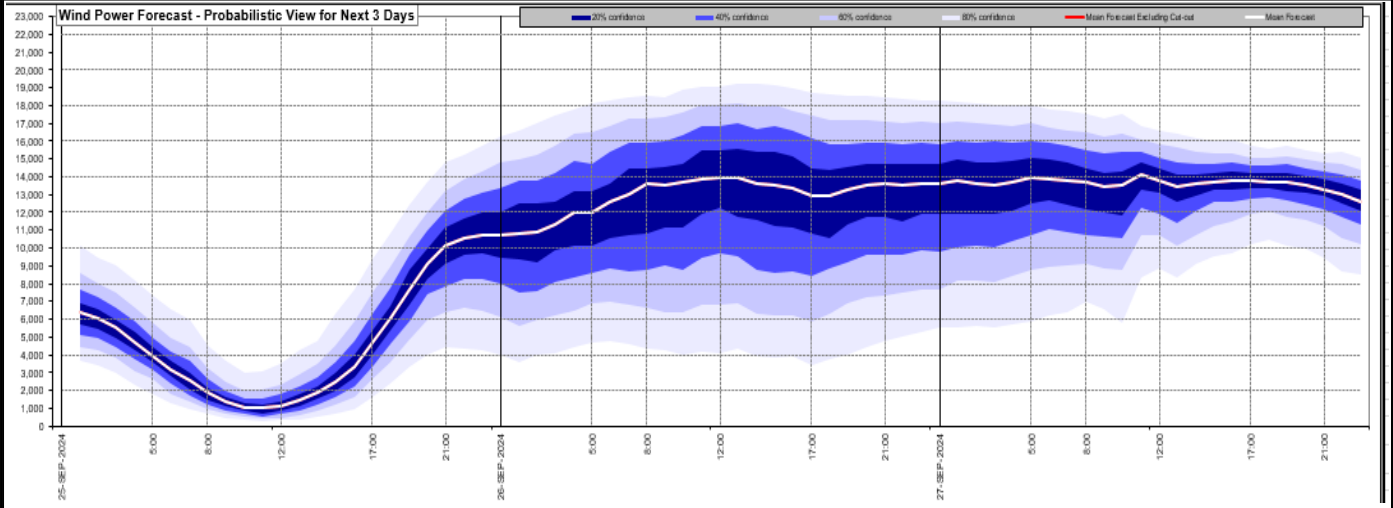
<a href="#">Today's Minimum De-Rated Margin</a>	14,504 (SP 38)	
Current BMU Largest Loss Risk	Generation	1500 MW
	Demand	560 MW



Yesterday's Market Summary	
<a href="#">Cash Out Price (Max)</a>	£120 /MWh (SP 34,36,41,43)
<a href="#">Cash Out Price (Min)</a>	£46.93 /MWh (SP 21)
<a href="#">Peak Demand Yesterday</a>	33,320 MW
Minimum Demand	18,600 MW

Interconnector Net Transfer Capacity (MWs)			
Today	Import	Export	Remarks
Netherlands (BritNed)	1000	1000	Fully Available
France (IFA)	1000	1000	Partially Available - planned outage
Belgium (Nemo)	0	0	Planned Outage
Ireland (EWIC)	500	500	Fully Available
France (ElecLink)	1000	1000	Available
Northern Ireland (MOYLE)	450	450	Fully Available
Norway (NSL)	1400	1400	Fully Available
France (IFA2)	0	0	Unplanned Outage
Viking Link	1400	1400	Fully Available
Ireland (GreenLink)	0	0	Not yet commissioned

### Wind Power Forecast

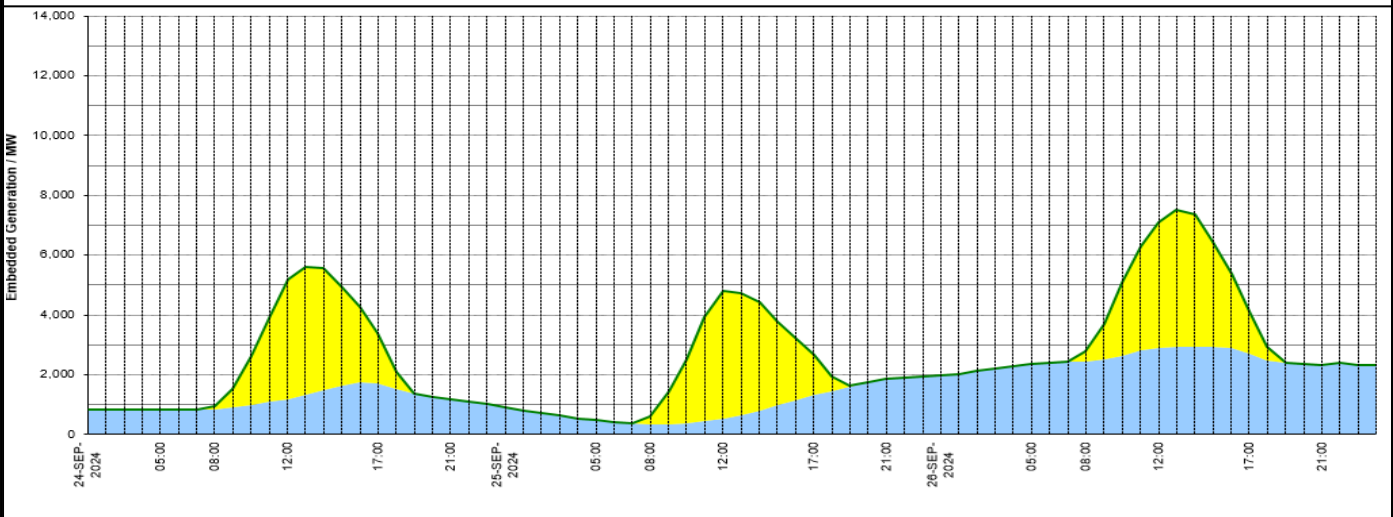


### Expected embedded generation (MWs)

#### Embedded Generation Forecast

Last run: 25-Sep-2024 23:33:04

	24-SEP-2024					25-SEP-2024					26-SEP-2024						
	05:00	08:00	12:00	17:00	21:00	00:00	05:00	08:00	12:00	17:00	21:00	00:00	05:00	08:00	12:00	17:00	21:00
Solar (MW)	0	31	3980	1675	0	0	0	247	4253	1364	0	0	0	323	4235	1416	0
Wind (MW)	831	842	1196	1704	1195	920	493	342	533	1313	1863	1974	2358	2450	2877	2700	2323
STOR (MW)	0	0	0	0	0	0	0	0	0	0	0	0	0	0	0	0	0
<b>Total (MW)</b>	<b>831</b>	<b>933</b>	<b>5176</b>	<b>3379</b>	<b>1195</b>	<b>920</b>	<b>493</b>	<b>589</b>	<b>4792</b>	<b>2677</b>	<b>1863</b>	<b>1974</b>	<b>2358</b>	<b>2773</b>	<b>7112</b>	<b>4116</b>	<b>2323</b>



Weather	Source	Commentary
Latest forecast (Summary)	<a href="#">Met Office</a> <a href="#">SEPA</a> <a href="#">Natural Resources Wales</a>	<p><b>Today:</b> A band of heavy rain will affect Northern Ireland, northern England, parts of north Wales, and for a time southern Scotland. Brighter to the south, but with heavy, locally thundery showers. Drier, brighter, but colder further north. Blustery in places.</p> <p><b>Tonight:</b> Outbreaks of rain, some heavy and perhaps thundery, will move south across England and Wales. Otherwise clear spells, with a patchy frost, and showers in the far north. Strong winds.</p>
General Weather Concerns e.g. wind, rain, snow, flooding, GB Weather Warnings	<a href="#">Met Office</a> <a href="#">Weather Warnings</a> <a href="#">SEPA</a> <a href="#">Natural Resources Wales</a>	<p><b>UK Weather Warnings</b> Yellow warning of rain Areas affected: East Midlands   North East England   North West England   Yorkshire &amp; Humber</p> <p>ACTIVE Started at: 00:00 BST on Thu 26 September Ends: 23:59 BST on Thu 26 September Heavy rain on Thursday could lead to some disruption, particularly to travel.</p>

Weather	Source	Commentary
		<ul style="list-style-type: none"> <li>- There is a small chance that homes and businesses could be flooded, causing damage to some buildings</li> <li>- Where flooding occurs, there is a slight chance of delays or cancellations to train and bus services</li> <li>- Spray and flooding could lead to difficult driving conditions and some road closures</li> <li>- There is a small chance that some communities will become cut off by flooded roads</li> <li>- There is a slight chance of power cuts and loss of other services to some homes and businesses</li> </ul> <p>Yellow warning of rain Areas affected: East Midlands   East of England   London &amp; South East England   South West England   Wales   West Midlands</p> <p>Starts: 06:00 BST on Thu 26 September Ends: 09:00 BST on Fri 27 September Heavy rain will bring the potential for some flooding and disruption to transport.</p> <ul style="list-style-type: none"> <li>- Spray and flooding could lead to difficult driving conditions and some road closures</li> <li>- Where flooding occurs, there is a slight chance of delays or cancellations to train and bus services</li> <li>- There is a small chance that homes and businesses could be flooded, causing damage to some buildings</li> <li>- There is a small chance that some communities will become cut off by flooded roads</li> <li>- There is a small chance of fast flowing or deep floodwater causing danger to life</li> <li>- There is a slight chance of power cuts and loss of other services to some homes and businesses</li> </ul> <hr/> <p><b>Flood Warnings</b> 28 flood warnings and 64 flood alerts issued for England.</p> <p>0 flood warnings and 0 flood alerts issued for Scotland.</p> <p>0 flood warnings and 0 flood alerts issued for Wales.</p>

Contains public sector information licensed under the Open Government Licence v1.0

Further Information	
BM Reports	<a href="https://www.bmreports.com">https://www.bmreports.com</a>
System Balancing Reports	<a href="https://www.nationalgrideso.com/industry-information/industry-data-and-reports/system-balancing-reports">https://www.nationalgrideso.com/industry-information/industry-data-and-reports/system-balancing-reports</a>
Forecast Volumes and Costs	<a href="https://www.nationalgrideso.com/industry-information/industry-data-and-reports/forecast-volumes-and-costs">https://www.nationalgrideso.com/industry-information/industry-data-and-reports/forecast-volumes-and-costs</a>