

# National Electricity Transmission System Status Report

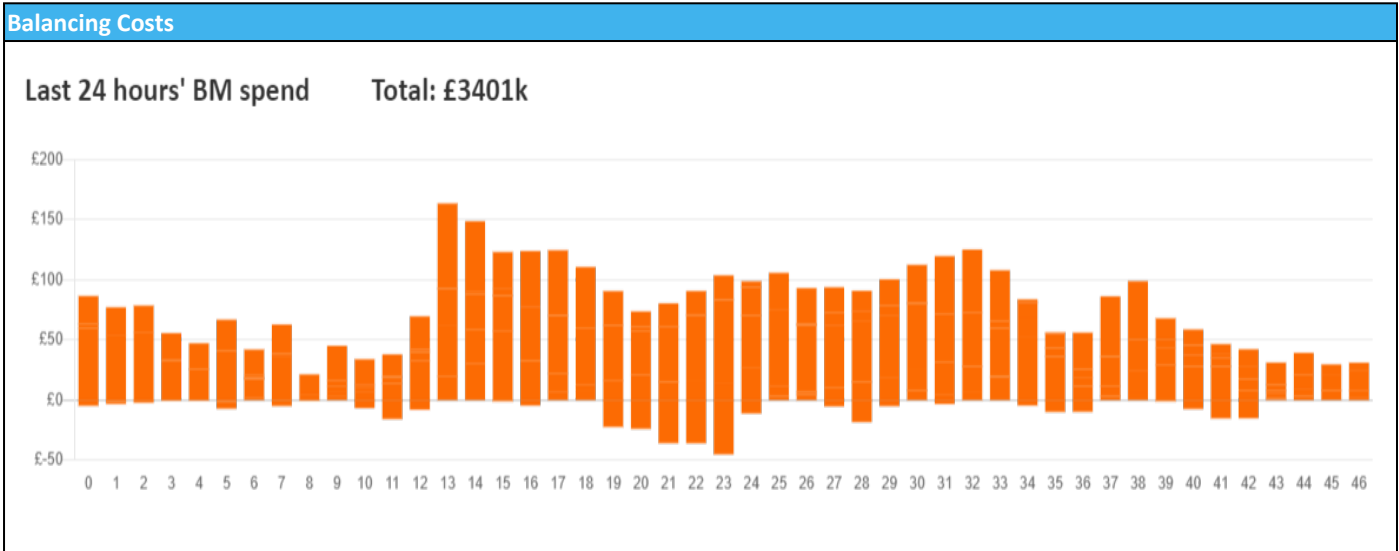


nationalgridESO

**National Electricity Transmission System Status Report**  
Wednesday 25 September 2024

Today's High Level Risk Status Forecast for the next 24h			
General Status		Voltage	
Demand		System Inertia	
System Margins		Weather	
Generation		Transmission	
Active Constraints			
<a href="#">System Warning</a>			

<a href="#">Today's Minimum De-Rated Margin</a>	5,315 (SP 36)	
Current BMU Largest Loss Risk	Generation	1500 MW
	Demand	560 MW



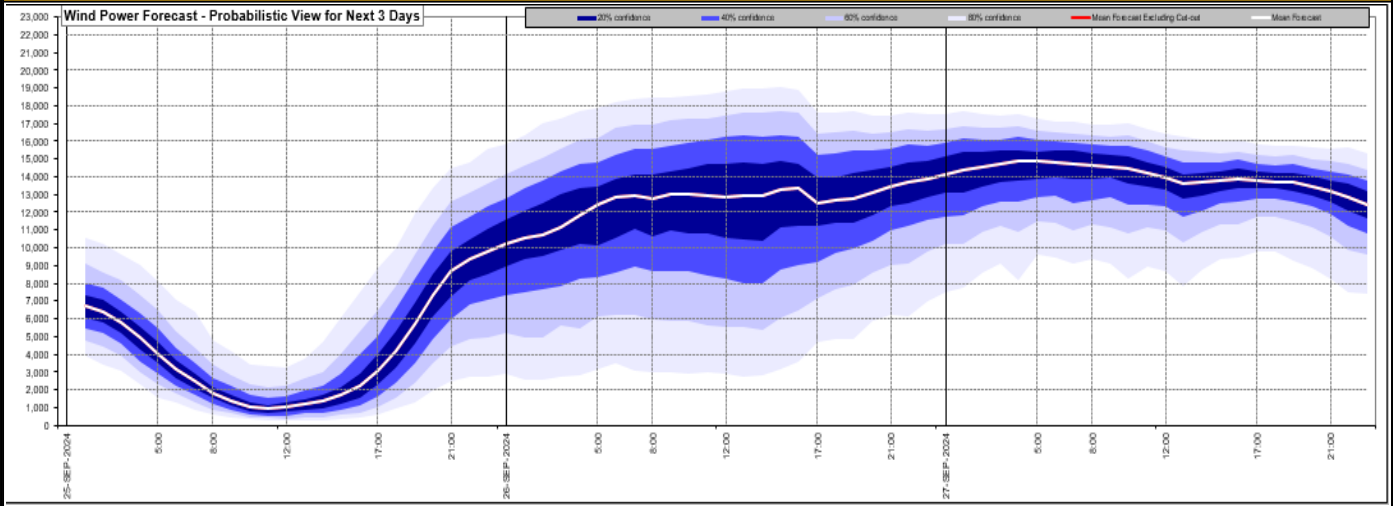
**Yesterday's Market Summary**

<a href="#">Cash Out Price (Max)</a>	£137 /MWh (SP 7,9)
<a href="#">Cash Out Price (Min)</a>	£35 /MWh (SP 26)
<a href="#">Peak Demand Yesterday</a>	33,022 MW
Minimum Demand	19,400 MW

**Interconnector**  
Net Transfer Capacity (MWs)

Today	Import	Export	Remarks
Netherlands (BritNed)	1000	1000	Fully Available
France (IFA)	1000	1000	Partially Available - planned outage
Belgium (Nemo)	0	0	Planned Outage
Ireland (EWIC)	500	500	Fully Available
France (ElecLink)	1000	1000	Fully Available
Northern Ireland (MOYLE)	450	450	Fully Available
Norway (NSL)	1400	1400	Fully Available
France (IFA2)	0	0	Unplanned Outage
Viking Link	1400	1400	Fully Available
Ireland (GreenLink)	0	0	Not yet commissioned

**Wind Power Forecast**

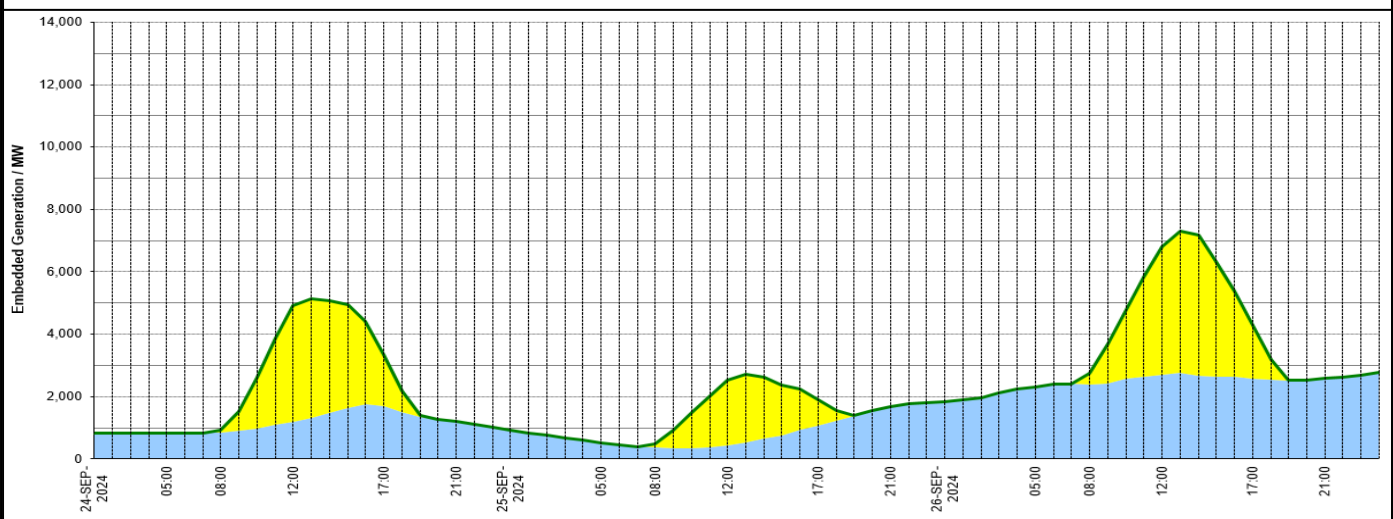


**Expected embedded generation (MWs)**

**Embedded Generation Forecast**

**Embedded Generation Estimates** Last run: 25-Sep-2024 04:33:13

	24-SEP-2024					25-SEP-2024					26-SEP-2024						
	05:00	08:00	12:00	17:00	21:00	00:00	05:00	08:00	12:00	17:00	21:00	00:00	05:00	08:00	12:00	17:00	21:00
Solar (MW)	0	91	3711	1639	0	0	0	124	2071	843	0	0	0	357	4086	1714	0
Wind (MW)	831	842	1196	1704	1195	920	525	365	445	1061	1674	1822	2317	2391	2708	2569	2576
STOR (MW)	0	0	0	0	0	0	0	0	0	0	0	0	0	0	0	0	0
<b>Total (MW)</b>	<b>831</b>	<b>933</b>	<b>4907</b>	<b>3343</b>	<b>1195</b>	<b>920</b>	<b>525</b>	<b>489</b>	<b>2516</b>	<b>1904</b>	<b>1674</b>	<b>1822</b>	<b>2317</b>	<b>2748</b>	<b>6794</b>	<b>4283</b>	<b>2576</b>



Weather	Source	Commentary
Latest forecast (Summary)	<a href="#">Met Office</a> <a href="#">SEPA</a> <a href="#">Natural Resources Wales</a>	<p><b>Today:</b> Cloudy skies and outbreaks of rain will slowly move northeastwards across much of England and Wales. Brighter but cooler for northern England, Scotland and Northern Ireland with a few showers. Cloudy and mild further south with further rain.</p> <p><b>Tonight:</b> Rain becomes slow moving across northern England, Wales and Northern Ireland, which can be heavy at times across eastern facing hills. Clear skies across Scotland can lead to ground frost</p>
General Weather Concerns e.g. wind, rain, snow, flooding, GB Weather Warnings	<a href="#">Met Office</a> <a href="#">Weather Warnings</a> <a href="#">SEPA</a> <a href="#">Natural Resources Wales</a>	<p><b>UK Weather Warnings</b> Yellow warning of rain Areas affected: East Midlands   North East England   North West England   Yorkshire &amp; Humber</p> <p>Starts: 00:00 BST on Thu 26 September Ends: 23:59 BST on Thu 26 September Heavy rain on Thursday could lead to some disruption, particularly to travel.</p> <p><b>Flood Warnings</b></p>

Weather	Source	Commentary
		31 flood warnings and 55 flood alerts issued for England.  0 flood warnings and 0 flood alerts issued for Scotland.  0 flood warnings and 0 flood alerts issued for Wales.

*Contains public sector information licensed under the Open Government Licence v1.0*

Further Information	
BM Reports	<a href="https://www.bmreports.com">https://www.bmreports.com</a>
System Balancing Reports	<a href="https://www.nationalgrideso.com/industry-information/industry-data-and-reports/system-balancing-reports">https://www.nationalgrideso.com/industry-information/industry-data-and-reports/system-balancing-reports</a>
Forecast Volumes and Costs	<a href="https://www.nationalgrideso.com/industry-information/industry-data-and-reports/forecast-volumes-and-costs">https://www.nationalgrideso.com/industry-information/industry-data-and-reports/forecast-volumes-and-costs</a>