

# National Electricity Transmission System Status Report

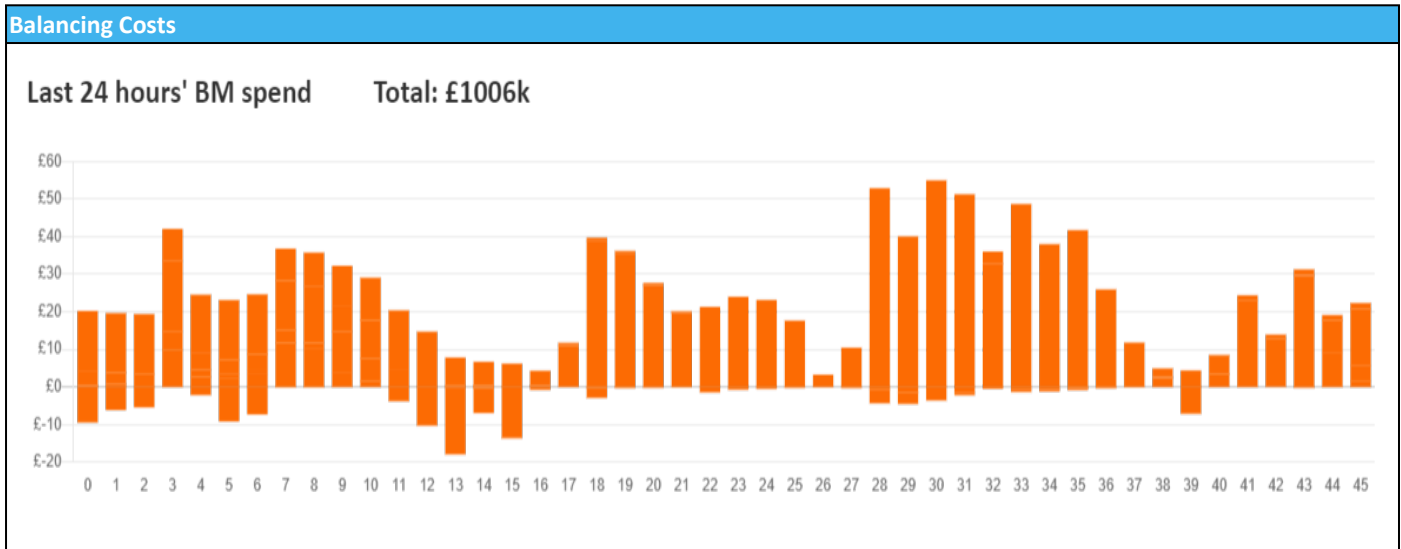


nationalgridESO

**National Electricity Transmission System Status Report**  
Monday 23 September 2024

Today's High Level Risk Status Forecast for the next 24h			
General Status		Voltage	
Demand		System Inertia	
System Margins		Weather	
Generation		Transmission	
Active Constraints			
<a href="#">System Warning</a>			

<a href="#">Today's Minimum De-Rated Margin</a>	5,604 (SP 40)	
Current BMU Largest Loss Risk	Generation	1500 MW
	Demand	1050 MW



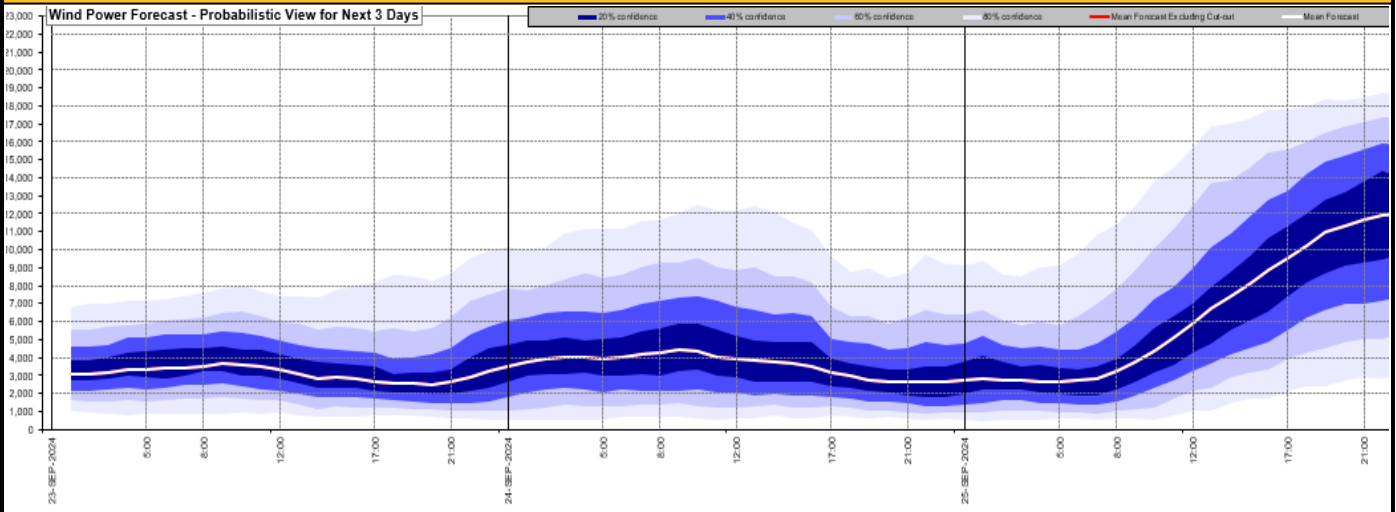
**Yesterday's Market Summary**

<a href="#">Cash Out Price (Max)</a>	£135 /MWh (SP 41)
<a href="#">Cash Out Price (Min)</a>	£15.35. /MWh (SP 44)
<a href="#">Peak Demand Yesterday</a>	29,815 MW
Minimum Demand	18,100MW

**Interconnector Net Transfer Capacity (MWs)**

Today	Import	Export	Remarks
Netherlands (BritNed)	1000	1000	Fully Available
France (IFA)	1000	1000	Partially Available - planned outage
Belgium (Nemo)	0	0	Planned Outage
Ireland (EWIC)	500	500	Fully Available
France (ElecLink)	1000	1000	Fully Available
Northern Ireland (MOYLE)	450	450	Fully Available
Norway (NSL)	1400	1400	Fully Available
France (IFA2)	0	0	Unplanned Outage
Viking Link	1400	1400	Fully Available
Ireland (GreenLink)	0	0	Not yet commissioned

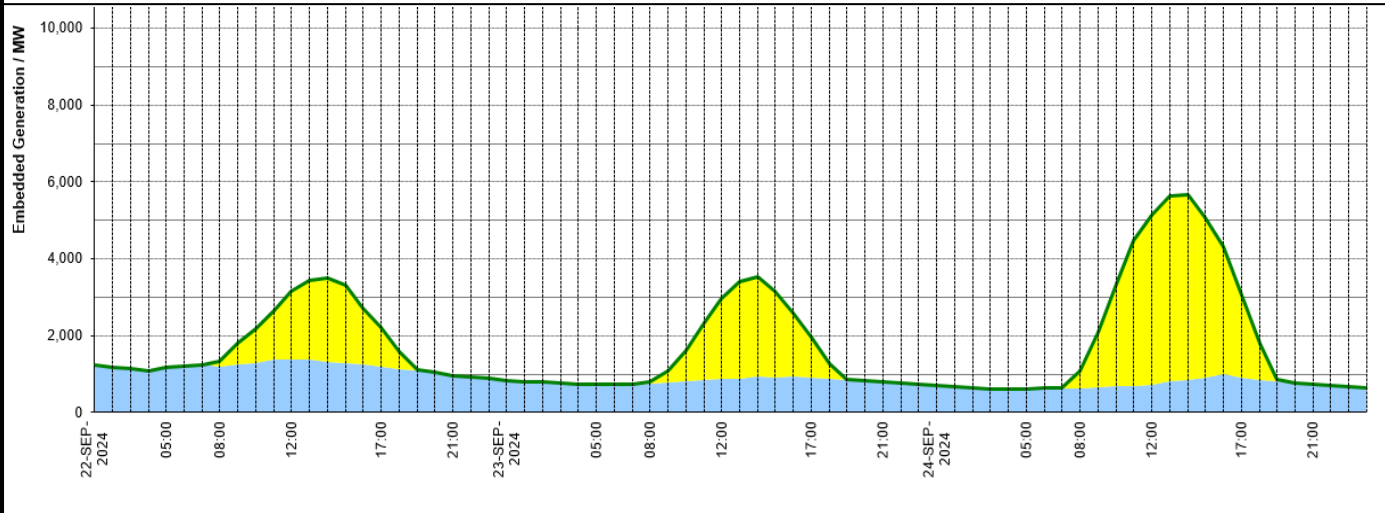
### Wind Power Forecast



### Expected embedded generation (MWs)

#### Embedded Generation Forecast

	22-SEP-2024					23-SEP-2024					24-SEP-2024						
	05:00	08:00	12:00	17:00	21:00	00:00	05:00	08:00	12:00	17:00	21:00	00:00	05:00	08:00	12:00	17:00	21:00
Solar (MW)	0	145	1766	1020	0	0	0	49	2103	1027	0	0	0	440	4410	2126	0
Wind (MW)	1190	1192	1381	1200	971	839	742	753	867	923	798	704	624	637	729	921	725
STOR (MW)	0	0	0	0	0	0	0	0	0	0	0	0	0	0	0	0	0
<b>Total (MW)</b>	<b>1190</b>	<b>1337</b>	<b>3147</b>	<b>2220</b>	<b>971</b>	<b>839</b>	<b>742</b>	<b>802</b>	<b>2970</b>	<b>1950</b>	<b>798</b>	<b>704</b>	<b>624</b>	<b>1077</b>	<b>5139</b>	<b>3047</b>	<b>725</b>



Weather	Source	Commentary
Latest forecast (Summary)	<a href="#">Met Office</a> <a href="#">SEPA</a> <a href="#">Natural Resources Wales</a>	<b>Today:</b> Heavy rain will linger across parts of England and Wales today. This could lead to localised flooding in some southern areas. Further north it will be drier and largely cloudy, although rain will move into northern Scotland <b>Tonight:</b> Rain in the south will gradually ease tonight and clear to the east during the early hours. Skies will remain cloudy, with rain continuing in northern Scotland through the night
General Weather Concerns e.g. wind, rain, snow, flooding, GB Weather Warnings	<a href="#">Met Office</a> <a href="#">Weather Warnings</a> <a href="#">SEPA</a> <a href="#">Natural Resources Wales</a>	<b>UK Weather Warnings</b> Amber - Rain Monday 23 September East Midlands, East of England, London & South East England, South West England, West Midlands, Yorkshire & Humber Yellow - Rain Monday 23 September East Midlands, East of England, London & South East England, North East England, North West England, South West England, Wales, West Midlands, Yorkshire & Humber

Weather	Source	Commentary
		<p><b>Flood Warnings</b> 12 flood warnings and 69 flood alerts issued for England.</p> <p>0 flood warnings and 0 flood alerts issued for Scotland.</p> <p>0 flood warnings and 0 flood alerts issued for Wales</p>

*Contains public sector information licensed under the Open Government Licence v1.0*

Further Information	
BM Reports	<a href="https://www.bmreports.com">https://www.bmreports.com</a>
System Balancing Reports	<a href="https://www.nationalgrideso.com/industry-information/industry-data-and-reports/system-balancing-reports">https://www.nationalgrideso.com/industry-information/industry-data-and-reports/system-balancing-reports</a>
Forecast Volumes and Costs	<a href="https://www.nationalgrideso.com/industry-information/industry-data-and-reports/forecast-volumes-and-costs">https://www.nationalgrideso.com/industry-information/industry-data-and-reports/forecast-volumes-and-costs</a>