

# National Electricity Transmission System Status Report

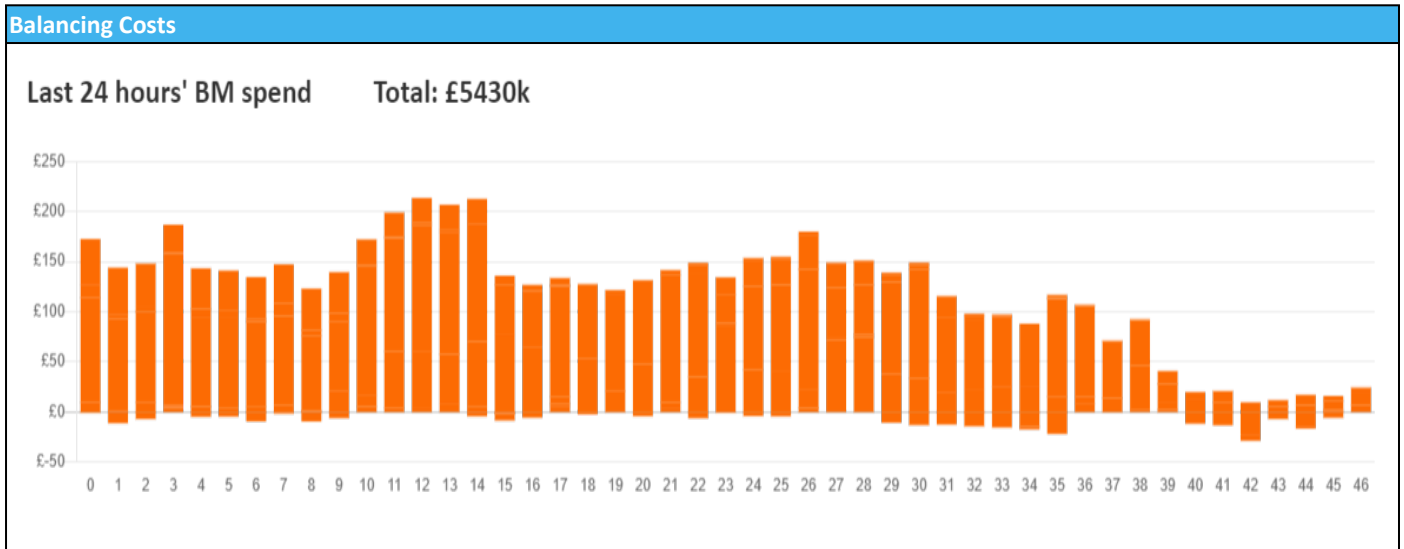


nationalgridESO

National Electricity Transmission System Status Report  
Friday 13 September 2024

Today's High Level Risk Status Forecast for the next 24h			
General Status		Voltage	
Demand		System Inertia	
System Margins		Weather	
Generation		Transmission	
Active Constraints			
<a href="#">System Warning</a>			

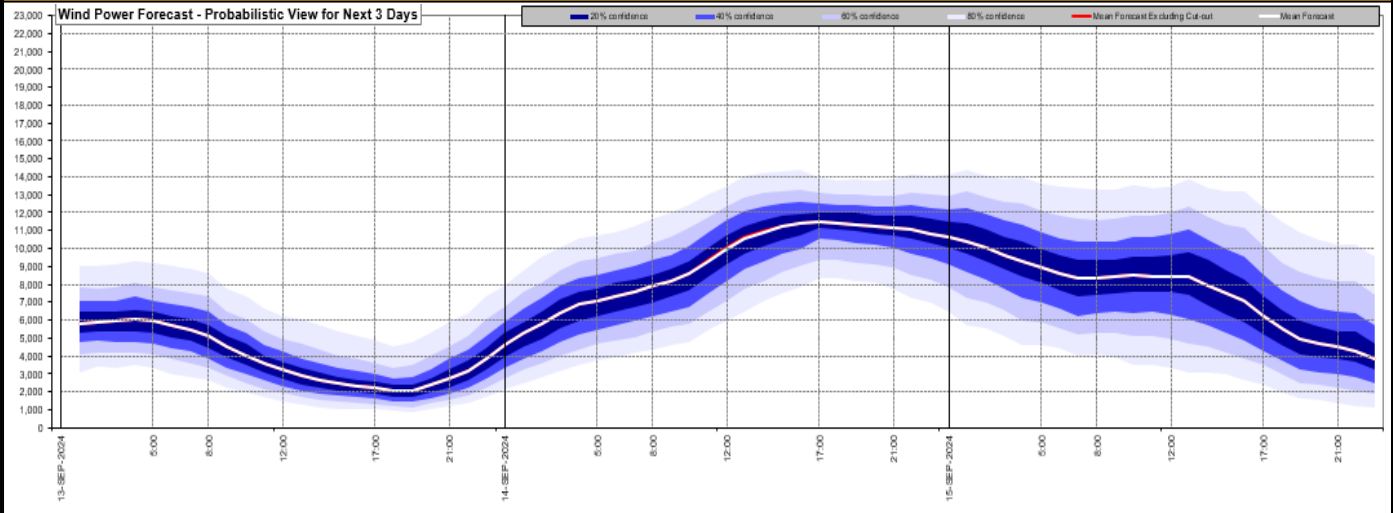
<a href="#">Today's Minimum De-Rated Margin</a>	7,254.26 (SP 40)	
Current BMU Largest Loss Risk	Generation	1600 MW
	Demand	560 MW



Yesterday's Market Summary	
<a href="#">Cash Out Price (Max)</a>	124.9 £/MWh (SP 40)
<a href="#">Cash Out Price (Min)</a>	-21.33 £/MWh (SP 25,29,30)
<a href="#">Peak Demand Yesterday</a>	35,216 MW
Minimum Demand	18,831 MW

Interconnector Net Transfer Capacity (MWs)			
Today	Import	Export	Remarks
Netherlands (BritNed)	1000	1000	Fully Available
France (IFA)	1000	1000	Partially Available - Bipole 2 on Outage.
Belgium (Nemo)	1000	1000	Fully Available
Ireland (EWIC)	500	500	Fully Available
France (ElecLink)	1000	1000	Fully Available
Northern Ireland (MOYLE)	450	450	Fully Available
Norway (NSL)	1400	1400	Fully Available
France (IFA2)	0	0	Unavailable
Viking Link	1400	1400	Fully Available
Ireland (GreenLink)	0	0	Not yet commissioned

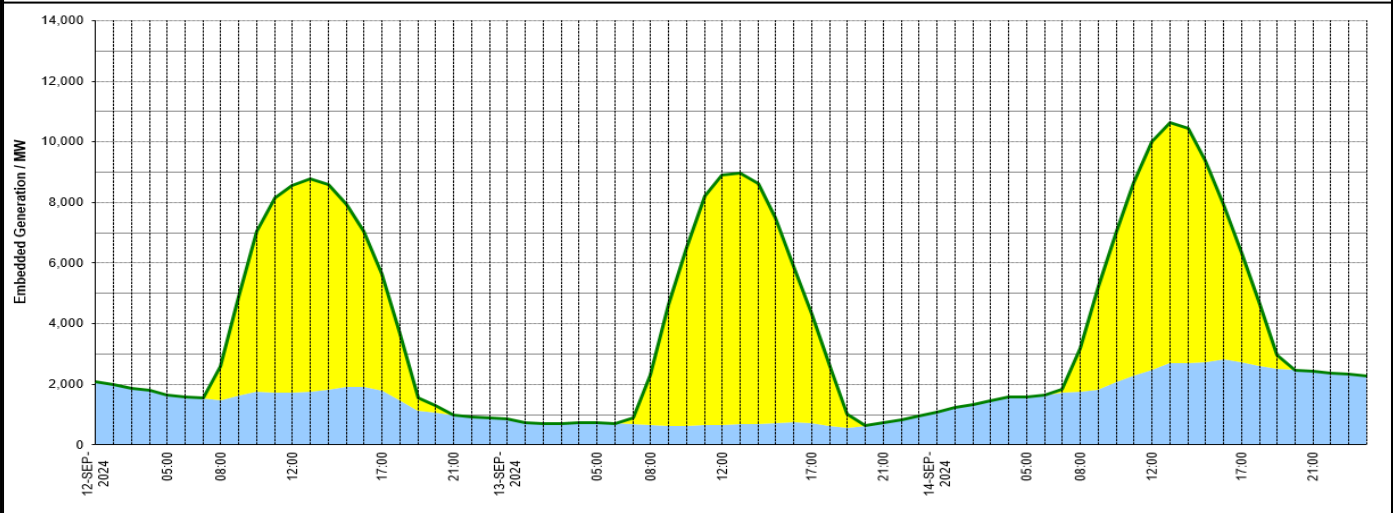
### Wind Power Forecast



### Expected embedded generation (MWs)

#### Embedded Generation Forecast

	12-SEP-2024					13-SEP-2024					14-SEP-2024						
	05:00	08:00	12:00	17:00	21:00	00:00	05:00	08:00	12:00	17:00	21:00	00:00	05:00	08:00	12:00	17:00	21:00
Solar (MW)	0	1101	6831	3842	0	0	0	1648	8258	3597	0	0	0	1450	7553	3613	0
Wind (MW)	1637	1474	1717	1803	986	852	724	661	653	720	729	1072	1576	1751	2468	2731	2426
STOR (MW)	0	0	0	0	0	0	0	0	0	0	0	0	0	0	0	0	0
<b>Total (MW)</b>	<b>1637</b>	<b>2575</b>	<b>8548</b>	<b>5645</b>	<b>986</b>	<b>852</b>	<b>724</b>	<b>2309</b>	<b>8911</b>	<b>4317</b>	<b>729</b>	<b>1072</b>	<b>1576</b>	<b>3201</b>	<b>10021</b>	<b>6344</b>	<b>2426</b>



Weather	Source	Commentary
Latest forecast (Summary)	<a href="#">Met Office</a> <a href="#">SEPA</a> <a href="#">Natural Resources Wales</a>	<b>Today:</b> Cold and crisp start. Staying fine and dry for most areas with a good number of sunny spells, though scattered showers possible for Scotland. Cloud building across Northern Ireland in the afternoon and turning breezier in the northwest. <b>Tonight:</b> Outbreaks of rain across Northern Ireland and parts of Scotland with gales in the far northwest by dawn. A milder night here, but cold under clearer skies further southeast.
General Weather Concerns e.g. wind, rain, snow, flooding, GB Weather Warnings	<a href="#">Met Office</a> <a href="#">Weather Warnings</a> <a href="#">SEPA</a> <a href="#">Natural Resources Wales</a>	<b>UK Weather Warnings</b> No weather warnings are in force for the UK. <b>Flood Warnings</b> 0 flood warnings and 0 flood alerts issued for England. 0 flood warnings and 0 flood alerts issued for Scotland. 0 flood warnings and 0 flood alerts issued for Wales

Contains public sector information licensed under the Open Government Licence v1.0

Further Information	
BM Reports	<a href="https://www.bmreports.com">https://www.bmreports.com</a>
System Balancing Reports	<a href="https://www.nationalgrideso.com/industry-information/industry-data-and-reports/system-balancing-reports">https://www.nationalgrideso.com/industry-information/industry-data-and-reports/system-balancing-reports</a>
Forecast Volumes and Costs	<a href="https://www.nationalgrideso.com/industry-information/industry-data-and-reports/forecast-volumes-and-costs">https://www.nationalgrideso.com/industry-information/industry-data-and-reports/forecast-volumes-and-costs</a>