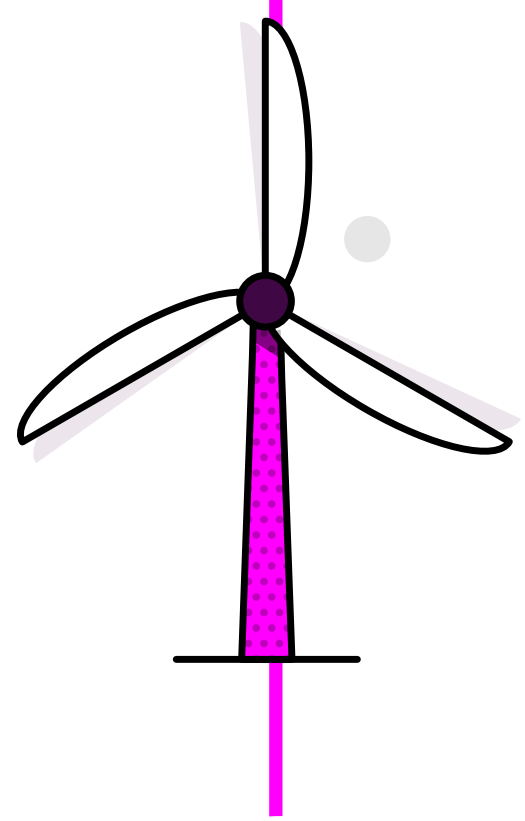
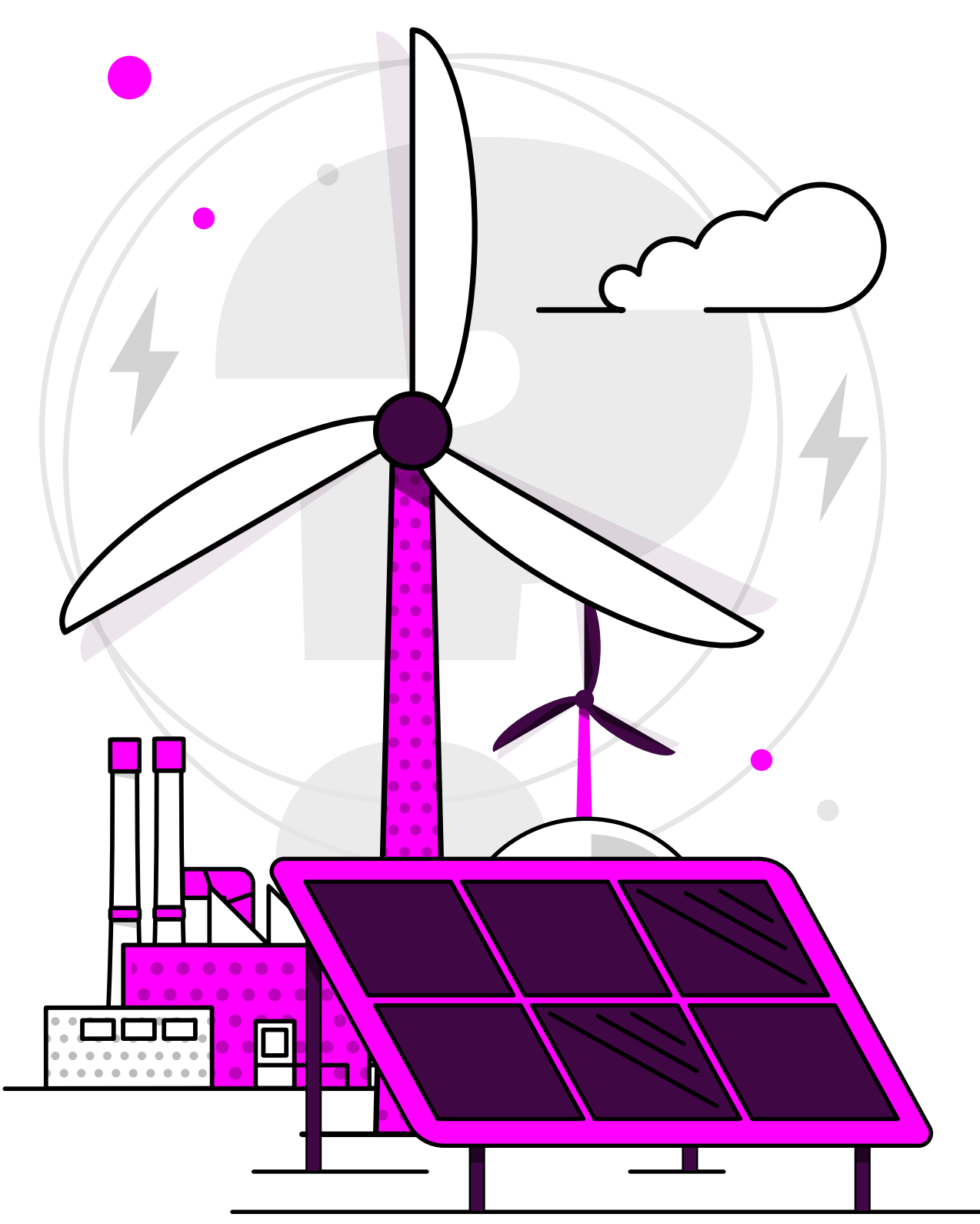


Britain's Energy Explained: August 2024

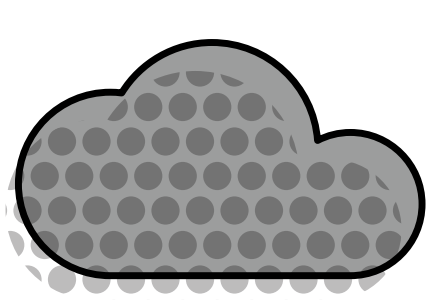


How was our electricity generated?



Zero carbon

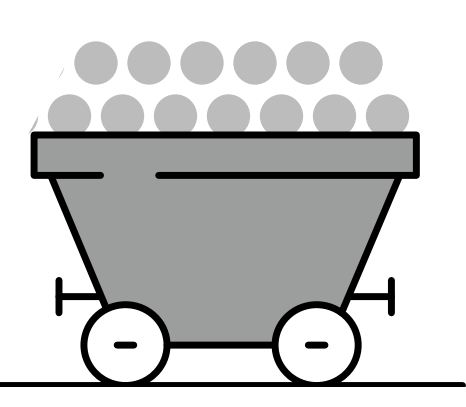
60% of electricity came from zero carbon sources
87% peak zero carbon share



Carbon intensity

83 gCO₂/kWh average

Greenest time of the month 11am on 23 August

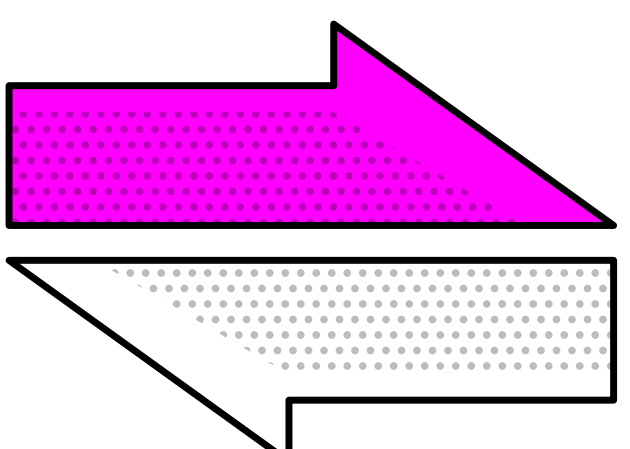


Coal

0.2% use this month

This time **5 years ago** coal usage was **1%**

288 consecutive coal free hours



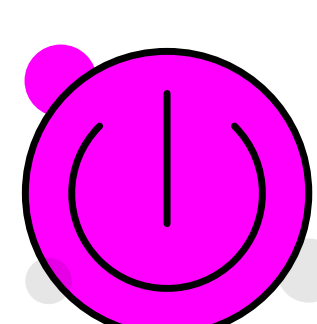
Imports & exports



Energy in
3210 GWh

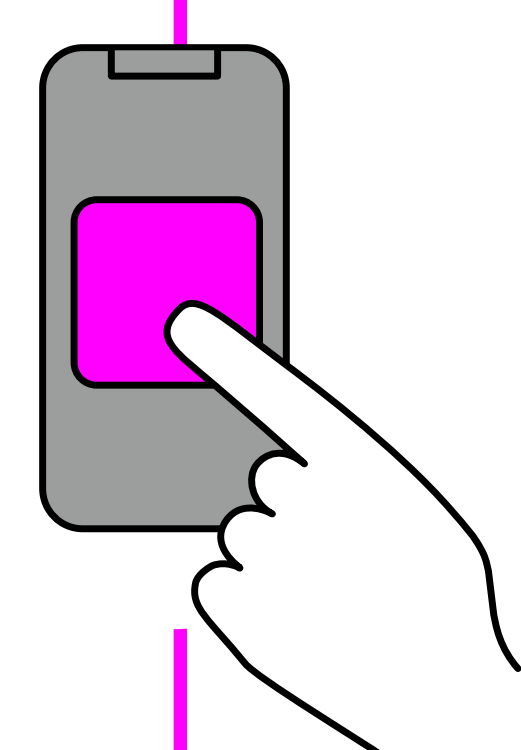
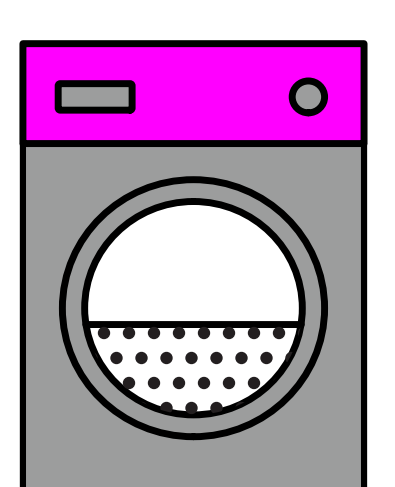


Energy out
1258 GWh



Demand

21TWh run through network (that's 21 billion washing machine cycles).
Peak demand time was 6pm on 28 August.



View in real-time

To view our data in real-time, please download the NESO app for Apple or Android. Or visit carbonintensity.org.uk