

# National Electricity Transmission System Status Report

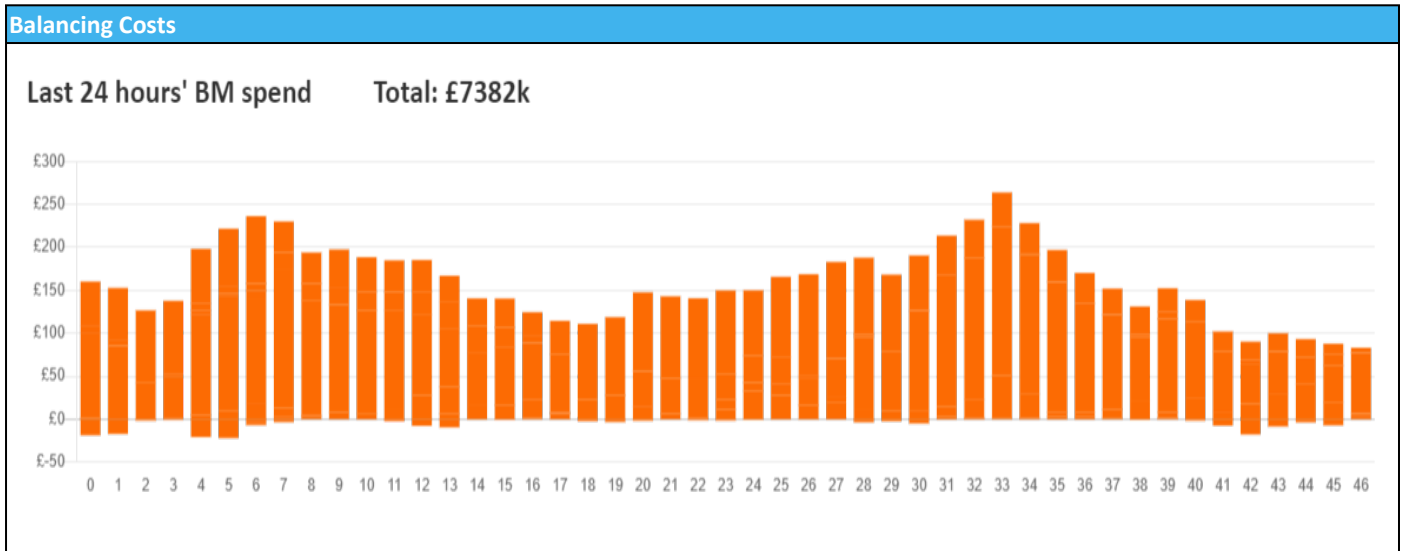


nationalgridESO

**National Electricity Transmission System Status Report**  
Monday 19 August 2024

Today's High Level Risk Status Forecast for the next 24h			
General Status		Voltage	
Demand		System Inertia	
System Margins		Weather	
Generation		Transmission	
Active Constraints			
<a href="#">System Warning</a>			

<a href="#">Today's Minimum De-Rated Margin</a>	13,015 (SP 24)	
Current BMU Largest Loss Risk	Generation	1600MW
	Demand	560MW



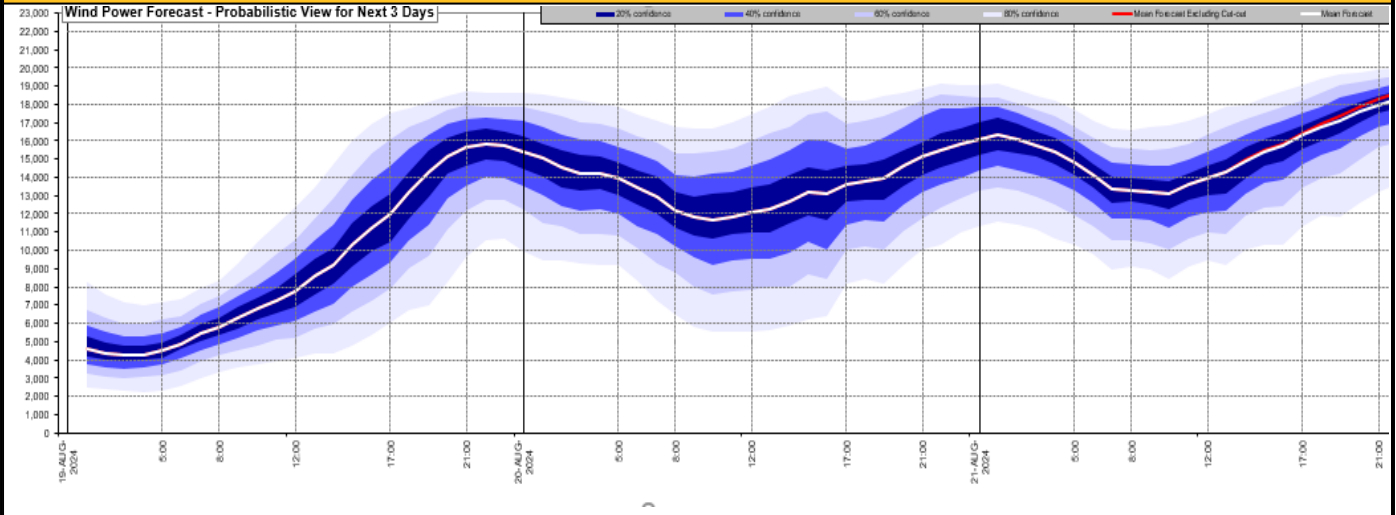
**Yesterday's Market Summary**

<a href="#">Cash Out Price (Max)</a>	107.00 £/MWh (SP 42))
<a href="#">Cash Out Price (Min)</a>	-29.73 £/MWh (SP 28)
<a href="#">Peak Demand Yesterday</a>	25,495 MW
Minimum Demand	17,400 MW

**Interconnector**  
Net Transfer Capacity (MWs)

Today	Import	Export	Remarks
Netherlands (BritNed)	1000	1000	Fully Available
France (IFA)	2000	2000	Fully Available
Belgium (Nemo)	1000	1000	Fully Available
Ireland (EWIC)	500	500	Fully Available
France (ElecLink)	1000	1000	Fully Available
Northern Ireland (MOYLE)	500	500	Fully Available
Norway (NSL)	1400	1400	Fully Available
France (IFA2)	1000	1000	Fully Available
Viking Link	0	0	Planned Outage
Ireland (GreenLink)	0	0	Not yet commissioned

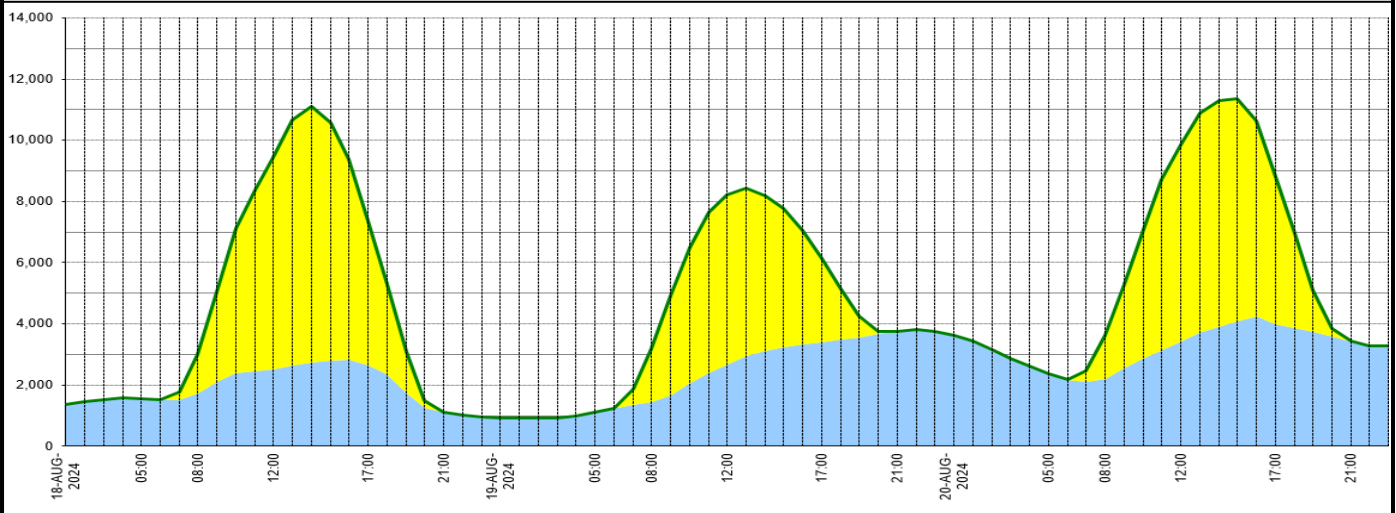
**Wind Power Forecast**



**Expected embedded generation (MWs)**

**Embedded Generation Forecast**

	18-AUG-2024					19-AUG-2024					20-AUG-2024						
	05:00	08:00	12:00	17:00	21:00	00:00	05:00	08:00	12:00	17:00	21:00	00:00	05:00	08:00	12:00	17:00	21:00
Solar (MW)	0	1272	6911	4735	0	0	0	1750	5523	2756	0	0	0	1412	6455	4832	0
Wind (MW)	1561	1722	2525	2640	1110	909	1107	1433	2680	3397	3761	3635	2382	2205	3408	3984	3430
STOR (MW)	0	0	0	0	0	0	0	0	0	0	0	0	0	0	0	0	0
<b>Total (MW)</b>	<b>1561</b>	<b>2994</b>	<b>9436</b>	<b>7375</b>	<b>1110</b>	<b>909</b>	<b>1107</b>	<b>3183</b>	<b>8203</b>	<b>6153</b>	<b>3761</b>	<b>3635</b>	<b>2382</b>	<b>3617</b>	<b>9863</b>	<b>8816</b>	<b>3430</b>



Weather	Source	Commentary
Latest forecast (Summary)	<a href="#">Met Office</a> <a href="#">SEPA</a> <a href="#">Natural Resources Wales</a>	<p><b>Today:</b> Rain steadily spreads into the west and north, heavy and persistent across hills. Strong winds developing, particularly around coasts of the Irish Sea. Staying largely dry in southeast England.</p> <p><b>Tonight:</b> Cloud increasing in the north with outbreaks of rain and drizzle developing in the northwest during the evening, and the far west and southwest later. Dry with clear spells elsewhere and turning chilly in the countryside with some patchy fog.</p>
General Weather Concerns e.g. wind, rain, snow, flooding, GB Weather Warnings	<a href="#">Met Office</a> <a href="#">Weather Warnings</a> <a href="#">SEPA</a> <a href="#">Natural Resources Wales</a>	<p><b>UK Weather Warnings</b> Yellow - Rain Monday 19 August SW Scotland, Lothian Borders</p> <p>Yellow - Rain Wednesday 21 August Central, Tayside &amp; Fife, Highlands &amp; Eilean Siar, Strathclyde</p> <p><b>Flood Warnings</b> 0 flood warnings and 0 flood alerts issued for England.</p>

Weather	Source	Commentary
		0 flood warnings and 1 flood alerts issued for Scotland.
		0 flood warnings and 0 flood alerts issued for Wales

*Contains public sector information licensed under the Open Government Licence v1.0*

Further Information	
BM Reports	<a href="https://www.bmreports.com">https://www.bmreports.com</a>
System Balancing Reports	<a href="https://www.nationalgrideso.com/industry-information/industry-data-and-reports/system-balancing-reports">https://www.nationalgrideso.com/industry-information/industry-data-and-reports/system-balancing-reports</a>
Forecast Volumes and Costs	<a href="https://www.nationalgrideso.com/industry-information/industry-data-and-reports/forecast-volumes-and-costs">https://www.nationalgrideso.com/industry-information/industry-data-and-reports/forecast-volumes-and-costs</a>