

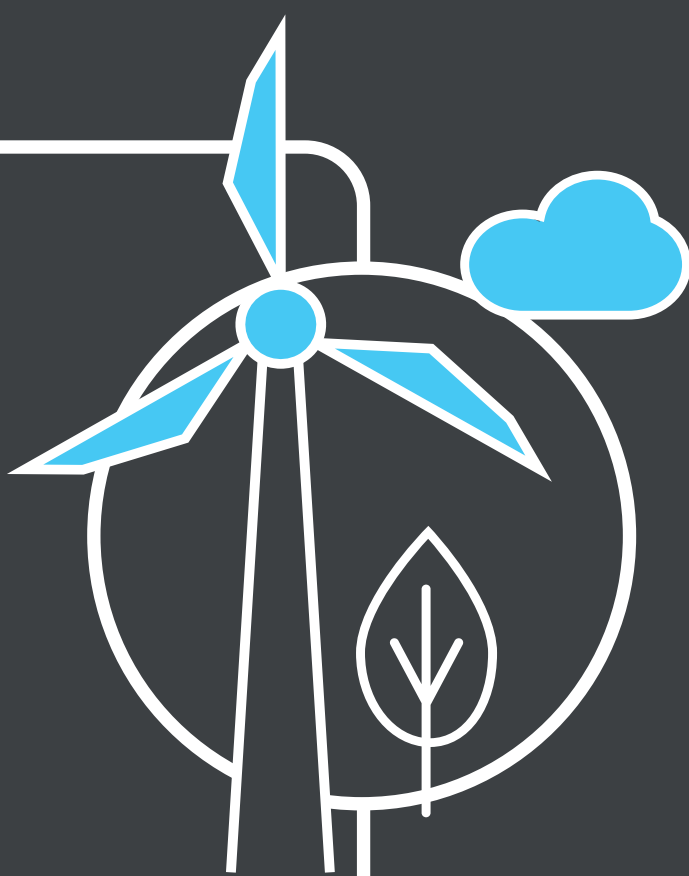
Britain's Electricity Explained: July 2024

ESO



Gas	24.1%
Wind	21.3%
Nuclear	16.4%
Biomass	7.4%
Coal	0.5%
Solar	8.9%
Imports	18.7%
Hydro	1.4%
Storage	1.3%

Zero carbon



47% of electricity came from zero carbon sources
88% peak zero carbon share

Carbon intensity



114 gCO₂/kWh average



Greenest time of the month
2pm on 4 July

Coal



0.5% use this month

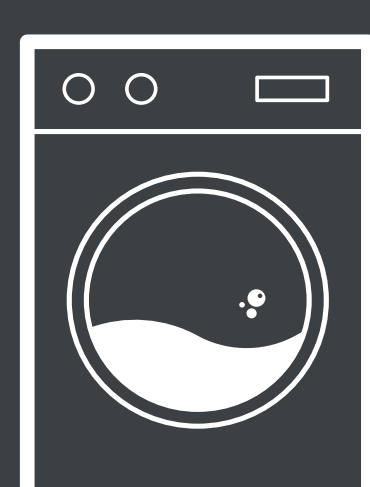
This time **5 years ago** coal usage was **0.1%**

128 consecutive coal free hours

Imports & exports



Demand



20TWh run through network (that's 20 billion washing machine cycles).
Peak demand time was 5pm on 15 July.

View in real-time



To view our data in real-time, please download the ESO app for Apple or Android.
Or visit carbonintensity.org.uk