

Publicly available

You have been joined in listen only mode with your camera turned off

# ESO Onboarding and Registration Drop-in Session

17 July 2024

# Agenda

- Welcome
  - Overview of the Registration process
  - Overview of the SORT Static process
  - Q and A
-

## Introduction | Sli.do code #1436027

To ask questions live & give us post event feedback go to **Sli.do event code #1436027**.

- **Ask your questions as early as possible** as our experts may need time to ensure a correct answer can be given live.
- **Please provide your name or organisation.** This is a forum for industry participants therefore questions from unidentified parties will not be answered live.
- **Questions will be answered in the session whenever possible.** However, we may need to take the question away in order to provide the answer.
- **Sli.do will remain open until 14:30**, even when the call closes earlier, to provide the maximum opportunity for you to ask questions.
- **All questions, along with answers, will be published.** Questions which are not answered on the day will be included, with answers, in the published FAQs.

**Stay up to date on our webpage:** [Balancing Mechanism Wider Access](#) (Q&A will be published with slide-pack)

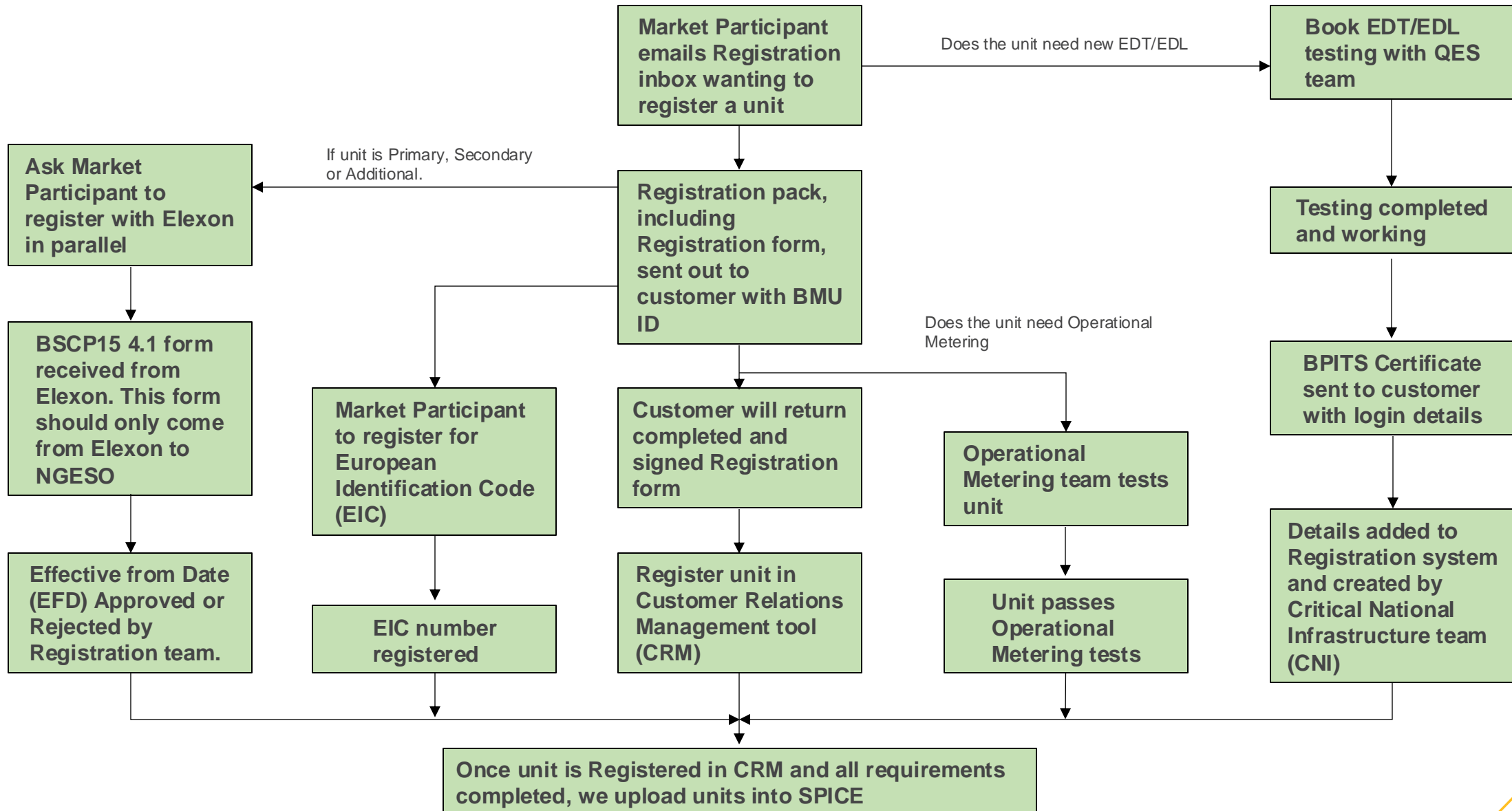


# Registration



17 July 2024

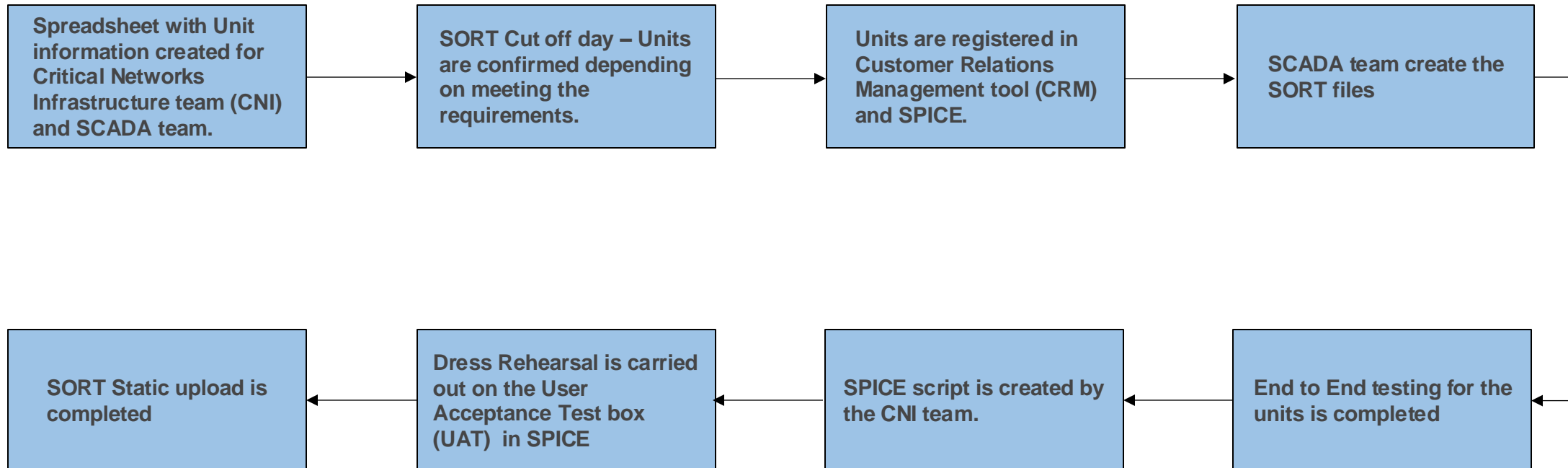
# High Level Registration Process



# SORT Static



# SORT STATIC




# Q&A

Sli.do code #1436027



## Reminder about asking questions

- **Please provide your name or organisation.** This is a forum for industry participants therefore questions from unidentified parties will not be answered live.
  - **Questions will be answered in the session whenever possible.** We may need to take the question away in order to provide the answer.
  - **Sli.do will remain open until 14:30**, even when the call closes earlier, to provide the maximum opportunity for you to ask questions.
  - **All questions will be recorded and published** All questions asked through Sli.do will be published, with answers, on the [Balancing Mechanism Wider Access](#) we may ask you to contact us by email in order to clarify or confirm details for the question.
  - **Out of scope questions** will be forwarded to the appropriate ESO expert or team for a direct response. We may ask you to contact us by email to ensure we have the correct contact details for the response. These questions will not be managed through this forum, and we are unable to forward questions without correct contact details.
- 

# Advance questions - Registration

## 1. What is the time frame for registering a unit?

The time frame can vary from unit to unit. The registration team ask for a minimum of a 5 month lead time to complete the process with NGENSO and Elexon.

## 2. How long can EDT/EDL testing last?

Our QES Team (EDT/EDL Testing team) require a 3 week lead time. This can increase during busy periods. The QES team will schedule a testing day with the customer. They can pass on this date, but if there are issues then this can increase the time.

## 3. Does my unit need to go into SORT?

If the unit uses a Control Point (EDL) then it will need to go into SORT. SORT is how the Control Room dispatch and instruct a unit via the Control Point.

# Advance questions – SORT Static

## 1. What is a SORT Static?

A SORT Static is an bi-monthly planned upload where new units are put into our system called SORT. SORT is used by the Control Room to dispatch and instruct units via their Control Point.

## 2. What is the difference between Cut-Off date, Upload Date and Back-Up Date?

The Cut-Off date is a date 3 weeks before the Upload Date in which the customer needs to meet all the criteria to be included in to the Upload. The Upload Date is the date the SORT Static will take place. The Back-Up Date is a date that the Control Room & CNI team will use if the SORT Static can't take place on the Upload Date.

## 3. What do I need to do by the cut-off date?

There is criteria that needs to be met to be included into the SORT Static. By the cut-off date we will need:

- The NGESO Registration Form filled out, signed and returned to us.
- BSCP15 4.1 form from Elexon
- Operational Metering tested and working
- If unit is using new EDT/EDL this will need to be tested and passed BPITS. If the unit is using existing units this step can be ignored.
- The unit must be registered for its European Identification Code (EIC).

## 4. Why is the SORT Static every two months?

There is a few factors as to why it's every two months. One is that we have to take the system away from the Control Room as they can't use the system whilst we upload the new units. These dates are planned a year in advance to make sure there's no schedule conflicts with outages. Another reason is there is a lot of work behind the scenes to make a SORT Static happen which is why the cut-off date and upload date are 3 weeks apart.

# Q&A

Sli.do code #1436027

# Polls

- Would you like to see further sessions?
- Are there any areas you would like us to focus on in future sessions?

# slido



**Would you like more of these sessions, if yes how frequently?**

ⓘ Start presenting to display the poll results on this slide.

**slido**



**What topics would you like to be covered in future sessions?**

ⓘ Start presenting to display the poll results on this slide.

A landscape photograph featuring a valley with mountains in the background. The sky is filled with dramatic, golden light trails from the sun, creating a sense of motion and energy. The foreground shows a grassy field with a winding path.

Thank you for  
your time