

# National Electricity Transmission System Status Report

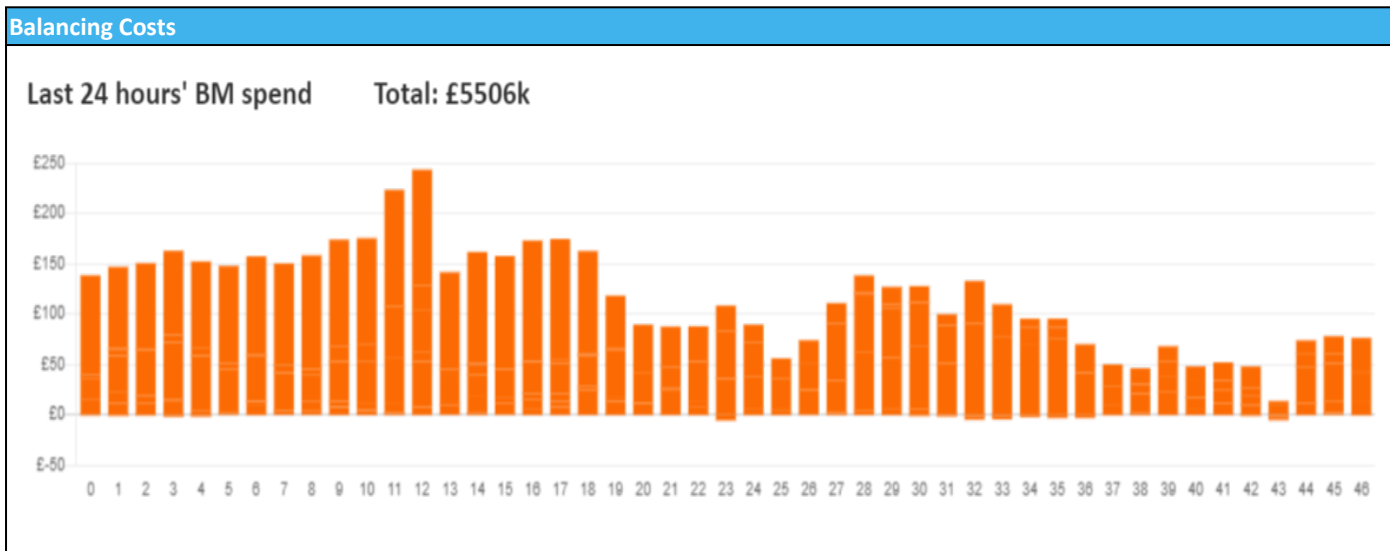


nationalgridESO

National Electricity Transmission System Status Report  
Monday 10 June 2024

| Today's High Level Risk Status Forecast for the next 24h |  |                |  |
|--|--|----------------|--|
| General Status   |  | Voltage        |  |
| Demand   |  | System Inertia |  |
| System Margins   |  | Weather        |  |
| Generation   |  | Transmission   |  |
| Active Constraints                                       |  |                |  |
| <a href="#">System Warning</a>                           |  |                |  |

|   |               |         |
|---|---------------|---------|
| <a href="#">Today's Minimum De-Rated Margin</a> | 12992 (SP 18) |         |
| Current BMU Largest Loss Risk                   | Generation    | 1600 MW |
|   | Demand        | 1050 MW |



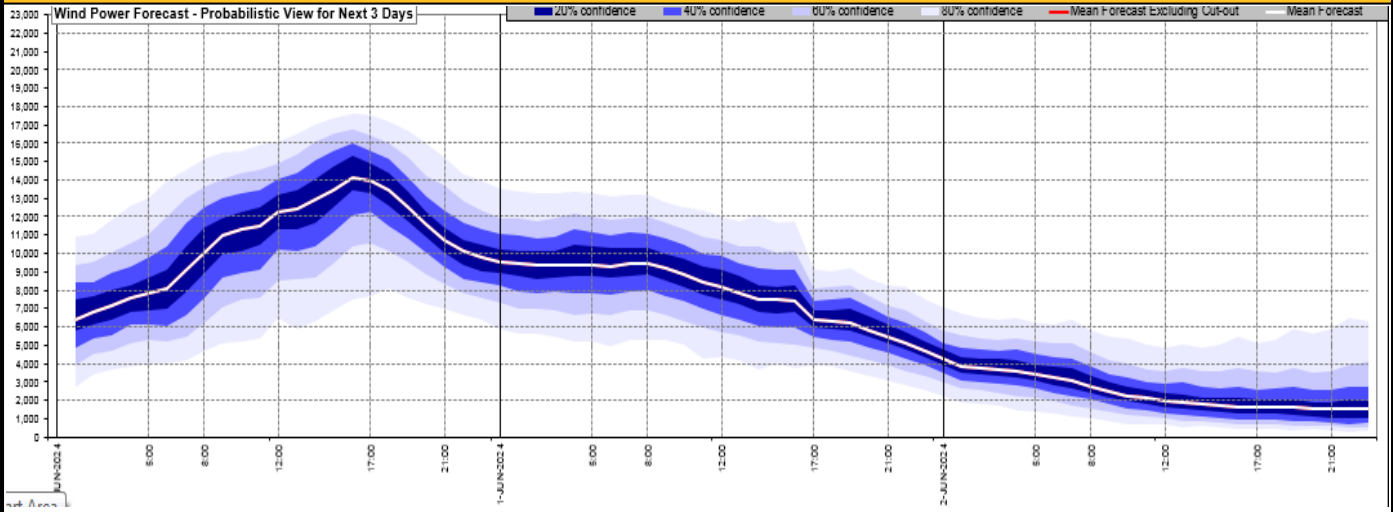
**Yesterday's Market Summary**

|                                       |                 |
|---------------------------------------|-----------------|
| <a href="#">Cash Out Price (Max)</a>  | £125 (SP 34-38) |
| <a href="#">Cash Out Price (Min)</a>  | -£21 (SP 10,16) |
| <a href="#">Peak Demand Yesterday</a> | 25,921 MW       |
| Minimum Demand                        | 16,600 MW       |

**Interconnector Net Transfer Capacity (MWs)**

| Today                    | Import | Export | Remarks              |
|--------------------------|--------|--------|----------------------|
| Netherlands (BritNed)    | 1000   | 1000   | Fully Available      |
| France (IFA)             | 2000   | 2000   | Fully Available      |
| Belgium (Nemo)           | 1000   | 1000   | Fully Available      |
| Ireland (EWIC)           | 500    | 500    | Fully Available      |
| France (ElecLink)        | 1000   | 1000   | Fully Available      |
| Northern Ireland (MOYLE) | 500    | 500    | Fully Available      |
| Norway (NSL)             | 1400   | 1400   | Fully Available      |
| France (IFA2)            | 1000   | 1000   | Fully Available      |
| Viking Link              | 1400   | 1400   | Fully Available      |
| Ireland (GreenLink)      | 0      | 0      | Not yet commissioned |

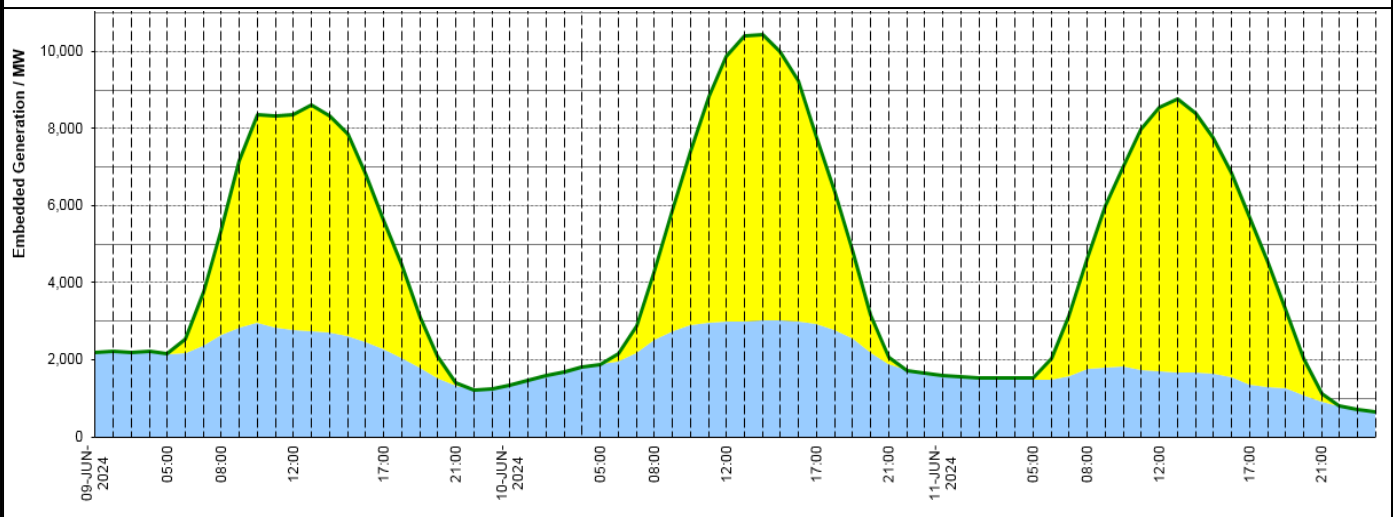
### Wind Power Forecast



### Expected embedded generation (MWs)

#### Embedded Generation Forecast

|                   | 09-JUN-2024 |             |             |             |             | 10-JUN-2024 |             |             |             |             | 11-JUN-2024 |             |             |             |             |             |             |
|-------------------|-------------|-------------|-------------|-------------|-------------|-------------|-------------|-------------|-------------|-------------|-------------|-------------|-------------|-------------|-------------|-------------|-------------|
|                   | 05:00       | 08:00       | 12:00       | 17:00       | 21:00       | 00:00       | 05:00       | 08:00       | 12:00       | 17:00       | 21:00       | 00:00       | 05:00       | 08:00       | 12:00       | 17:00       | 21:00       |
| Solar (MW)        | 0           | 2695        | 5567        | 3352        | 98          | 0           | 0           | 1754        | 6896        | 4835        | 190         | 0           | 22          | 2853        | 6838        | 4317        | 185         |
| Wind (MW)         | 2146        | 2635        | 2785        | 2260        | 1313        | 1325        | 1878        | 2521        | 2988        | 2939        | 1883        | 1599        | 1493        | 1759        | 1695        | 1370        | 925         |
| STOR (MW)         | 0           | 0           | 0           | 0           | 0           | 0           | 0           | 0           | 0           | 0           | 0           | 0           | 0           | 0           | 0           | 0           | 0           |
| <b>Total (MW)</b> | <b>2146</b> | <b>5330</b> | <b>8352</b> | <b>5612</b> | <b>1411</b> | <b>1325</b> | <b>1878</b> | <b>4275</b> | <b>9884</b> | <b>7774</b> | <b>2073</b> | <b>1599</b> | <b>1515</b> | <b>4612</b> | <b>8533</b> | <b>5687</b> | <b>1110</b> |



| Weather   | Source  | Commentary   |
|---|---|--|
| Latest forecast (Summary)   | <a href="#">Met Office</a><br><a href="#">SEPA</a><br><a href="#">Natural Resources Wales</a>                                     | <b>Today:</b><br>Overnight rain clearing out into the North Sea during the morning, with sunny spells and showers through the day. Showers heaviest in the east with a risk of hail and thunder. Cool in the breeze, but warm in sheltered sunshine.<br><b>Tonight:</b><br>Showers lingering on northern and eastern coasts, but turning drier in land with some evening sunshine. Cool overnight, especially under clear skies. |
| General Weather Concerns e.g. wind, rain, snow, flooding, GB Weather Warnings | <a href="#">Met Office</a><br><a href="#">Weather Warnings</a><br><a href="#">SEPA</a><br><a href="#">Natural Resources Wales</a> | <b>UK Weather Warnings</b><br>Yellow warning<br>Wind<br>05:00<br>Today<br>UTC+1<br>11:00<br>Today<br>Regions and local authorities affected:<br>East of England<br>Norfolk<br>Suffolk  |

| Weather | Source | Commentary  |
|---------|--------|---|
|         |        | <b>Headline</b><br>A brief spell of unseasonably strong north to northwesterly winds may lead to some disruption to travel. |
|         |        | <b>Flood Warnings</b><br>0 flood warnings and 12 flood alerts issued for England.   |
|         |        | 0 flood warnings and 0 flood alerts issued for Scotland.  |
|         |        | 0 flood warnings and 0 flood alerts issued for Wales  |

*Contains public sector information licensed under the Open Government Licence v1.0*

| Further Information        |   |
|----------------------------|---|
| BM Reports                 | <a href="https://www.bmreports.com">https://www.bmreports.com</a>   |
| System Balancing Reports   | <a href="https://www.nationalgrideso.com/industry-information/industry-data-and-reports/system-balancing-reports">https://www.nationalgrideso.com/industry-information/industry-data-and-reports/system-balancing-reports</a>     |
| Forecast Volumes and Costs | <a href="https://www.nationalgrideso.com/industry-information/industry-data-and-reports/forecast-volumes-and-costs">https://www.nationalgrideso.com/industry-information/industry-data-and-reports/forecast-volumes-and-costs</a> |