

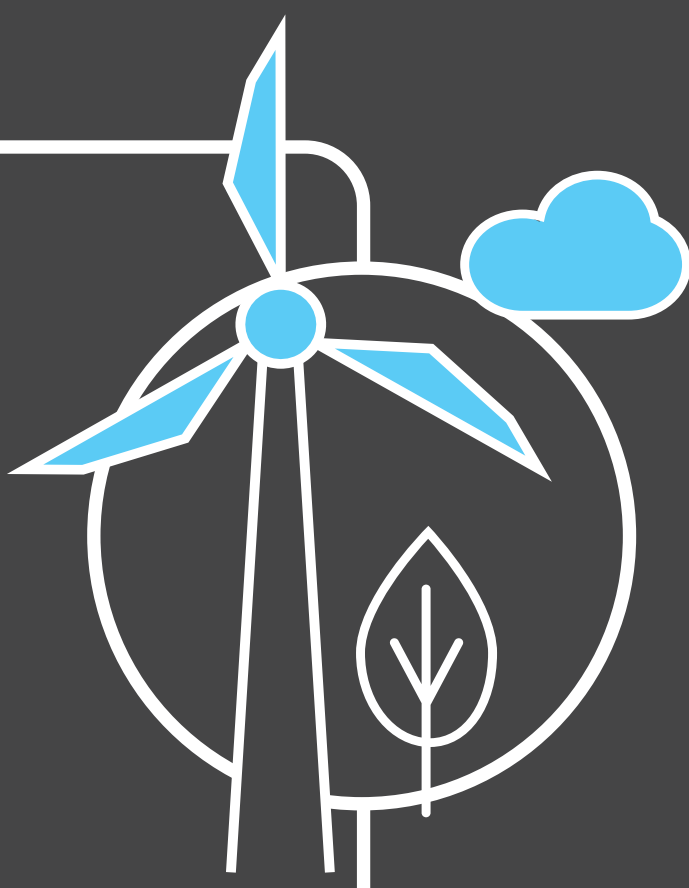
# Britain's Electricity Explained: April 2024

## ESO



Gas	16.9%
Wind	35.1%
Nuclear	16.2%
Biomass	7%
Coal	0.9%
Solar	6.2%
Imports	14.7%
Hydro	1.9%
Storage	1.1%

### Zero carbon



**59%** of electricity came from zero carbon sources  
**88%** peak zero carbon share

### Carbon intensity



**92** gCO<sub>2</sub>/kWh average



Greenest time of the month  
1pm on 15 April

### Coal



**0.9%** use this month

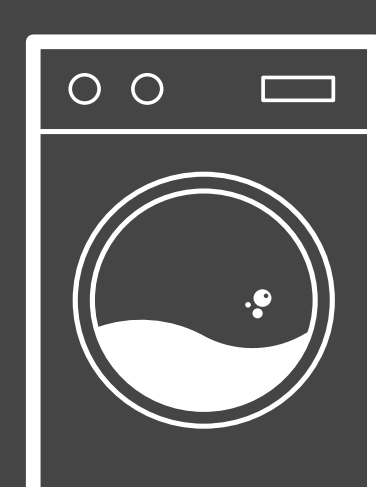
This time **5 years ago** coal usage was **1.2%**

**35** consecutive coal free hours

### Imports & exports



### Demand



**22TWh** run through network (that's 22 billion washing machine cycles).  
Peak demand time was 5:30pm on 22 April.

### View in real-time



To view our data in real-time, please download the ESO app for Apple or Android.  
Or visit [carbonintensity.org.uk](https://carbonintensity.org.uk)