

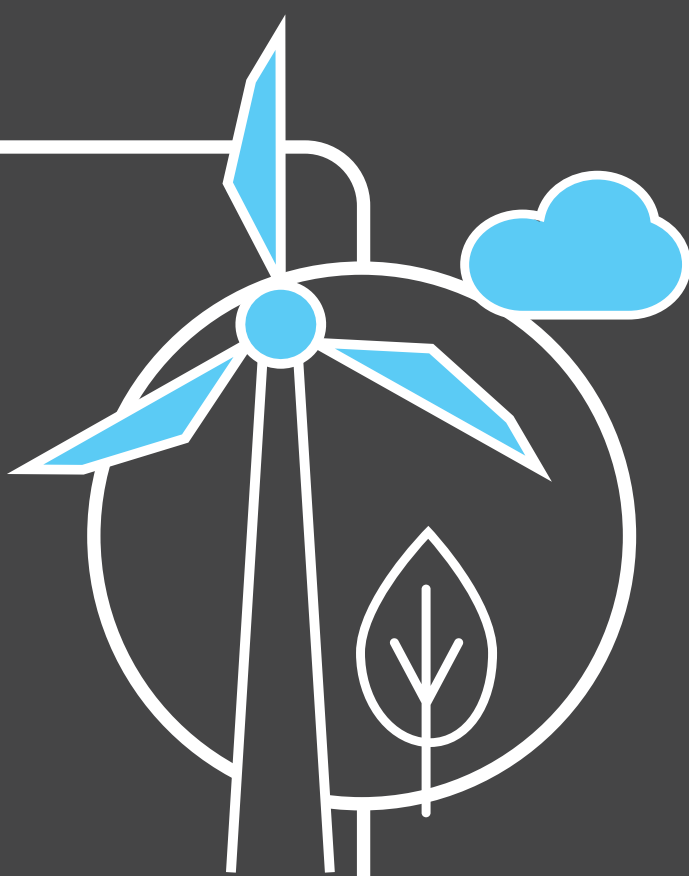
Britain's Electricity Explained: May 2024

ESO



● Gas	25%
● Wind	18.9%
● Nuclear	17%
● Biomass	7.2%
● Coal	0.4%
● Solar	8%
● Imports	18.6%
● Hydro	1.4%
● Storage	1.2%

Zero carbon



45% of electricity came from zero carbon sources
74% peak zero carbon share

Carbon intensity



124 gCO₂/kWh average



Greenest time of the month
 12:30pm on 12 May

Coal



0.4% use this month

This time **5 years ago** coal usage was **0.1%**

61 consecutive coal free hours

Imports & exports

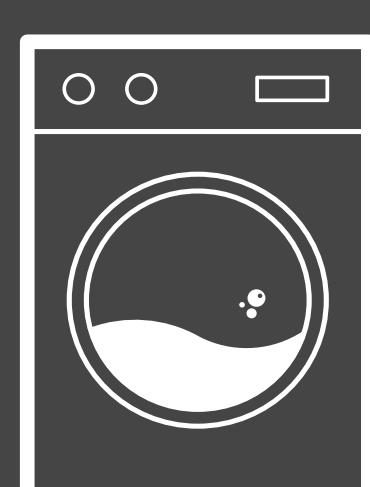


Energy in
4446 GWh



Energy out
905 GWh

Demand



21TWh run through network (that's 21 billion washing machine cycles).
 Peak demand time was 6pm on 20 May.

View in real-time



To view our data in real-time, please download the ESO app for Apple or Android.
 Or visit carbonintensity.org.uk