

**National Electricity  
Transmission System Status Report**

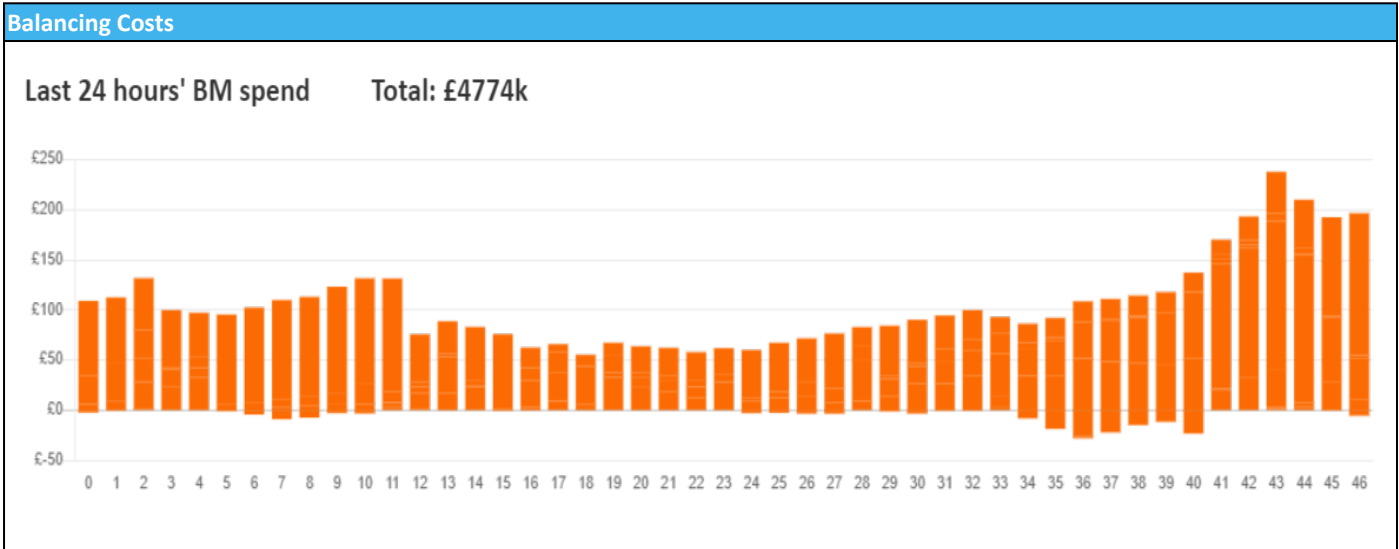


national**grid**ESO

National Electricity Transmission System Status Report  
Monday 29 April 2024

Today's High Level Risk Status Forecast for the next 24h			
General Status		Voltage	
Demand		System Inertia	
System Margins		Weather	
Generation		Transmission	
Active Constraints			
<a href="#">System Warning</a>			

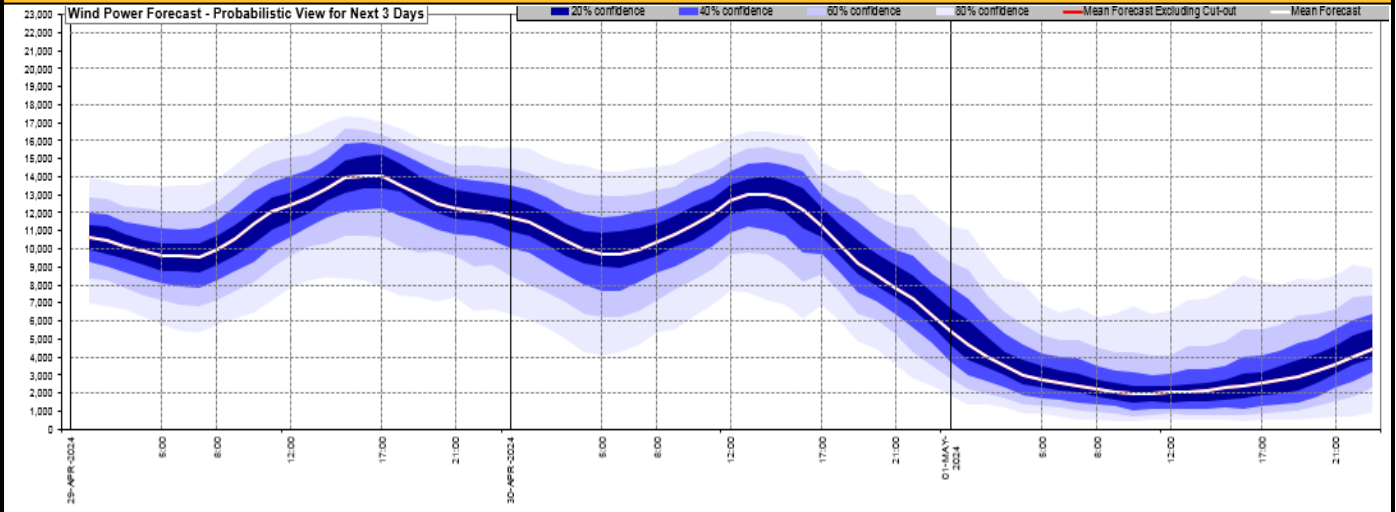
<a href="#">Today's Minimum De-Rated Margin</a>	15580.43 (SP 17)	
Current BMU Largest Loss Risk	Generation	1600 MW
	Demand	560 MW



Yesterday's Market Summary	
<a href="#">Cash Out Price (Max)</a>	£105.00 (SP 18)
<a href="#">Cash Out Price (Min)</a>	£-22.20 (SP 48)
<a href="#">Peak Demand Yesterday</a>	30,750 MW
Minimum Demand	19,200 MW

Interconnector Net Transfer Capacity (MWs)			
Today	Import	Export	Remarks
Netherlands (BritNed)	1000	1000	Fully Available
France (IFA)	1000	1000	Partially Available
Belgium (Nemo)	1000	1000	Fully Available
Ireland (EWIC)	500	500	Fully Available
France (ElecLink)	1000	1000	Fully Available
Northern Ireland (MOYLE)	500	500	Fully Available
Norway (NSL)	1400	1400	Fully Available
France (IFA2)	1014	1014	Fully Available
Viking Link	1400	1400	Fully Available
Ireland (GreenLink)	0	0	Not yet commissioned

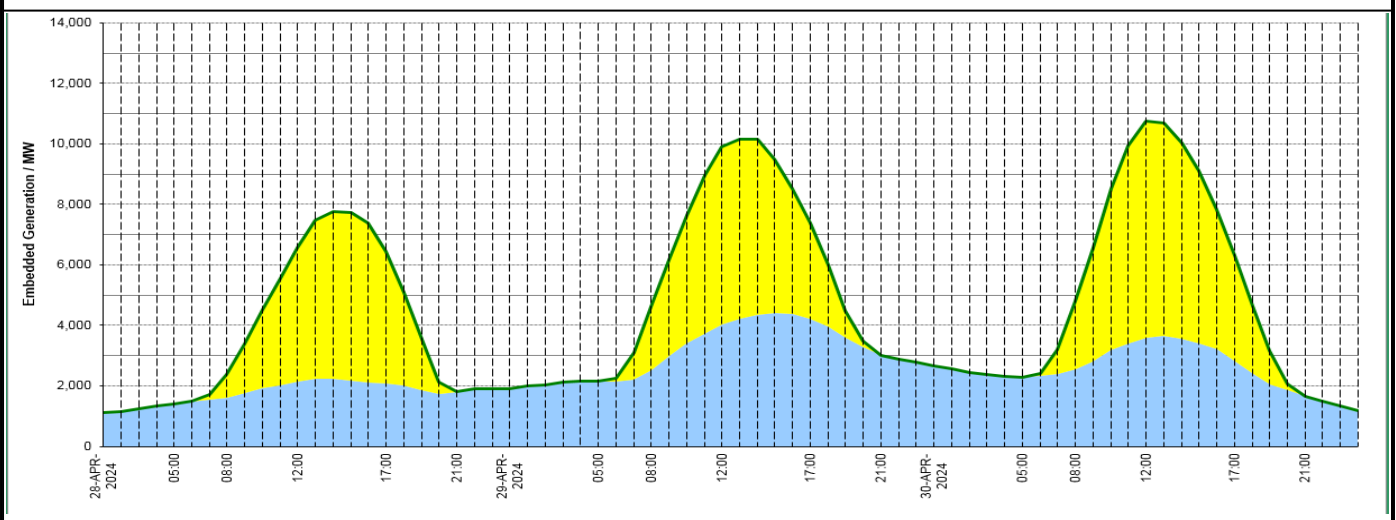
### Wind Power Forecast



### Expected embedded generation (MWs)

#### Embedded Generation Forecast

	28-APR-2024					29-APR-2024					30-APR-2024						
	05:00	08:00	12:00	17:00	21:00	00:00	05:00	08:00	12:00	17:00	21:00	00:00	05:00	08:00	12:00	17:00	21:00
Solar (MW)	0	753	4421	4357	0	0	0	2103	5856	3157	0	0	0	2240	7155	3506	0
Wind (MW)	1399	1614	2153	2089	1804	1896	2151	2519	4033	4232	3023	2676	2296	2553	3606	2823	1665
STOR (MW)	0	0	0	0	0	0	0	0	0	0	0	0	0	0	0	0	0
<b>Total (MW)</b>	<b>1399</b>	<b>2367</b>	<b>6574</b>	<b>6446</b>	<b>1804</b>	<b>1896</b>	<b>2151</b>	<b>4622</b>	<b>9889</b>	<b>7389</b>	<b>3023</b>	<b>2676</b>	<b>2296</b>	<b>4793</b>	<b>10761</b>	<b>6329</b>	<b>1665</b>



Weather	Source	Commentary
Latest forecast (Summary)	<a href="#">Met Office</a> <a href="#">SEPA</a> <a href="#">Natural Resources Wales</a>	<p><b>Today:</b> A band of rain in the west slowly moves northeast through the day, giving a mostly wet day to western parts. Driest in the east, especially the southeast with sunny spells. A little milder for most. Breezy.</p> <p><b>Tonight:</b> Rain continuing in western parts, turning heavy at times, mainly over high ground. Further east staying dry with clear spells and turning chilly again by dawn.</p>
General Weather Concerns e.g. wind, rain, snow, flooding, GB Weather Warnings	<a href="#">Met Office</a> <a href="#">Weather Warnings</a> <a href="#">SEPA</a> <a href="#">Natural Resources Wales</a>	<p><b>UK Weather Warnings</b> No weather warnings are in force for the UK</p> <p><b>Flood Warnings</b> 4 flood warnings and 97 flood alerts issued for England.</p> <p>0 flood warnings and 0 flood alerts issued for Scotland.</p> <p>0 flood warnings and 0 flood alerts issued for Wales</p>

Contains public sector information licensed under the Open Government Licence v1.0

Further Information	
BM Reports	<a href="https://www.bmreports.com">https://www.bmreports.com</a>
System Balancing Reports	<a href="https://www.nationalgrideso.com/industry-information/industry-data-and-reports/system-balancing-reports">https://www.nationalgrideso.com/industry-information/industry-data-and-reports/system-balancing-reports</a>
Forecast Volumes and Costs	<a href="https://www.nationalgrideso.com/industry-information/industry-data-and-reports/forecast-volumes-and-costs">https://www.nationalgrideso.com/industry-information/industry-data-and-reports/forecast-volumes-and-costs</a>