

# National Electricity Transmission System Status Report

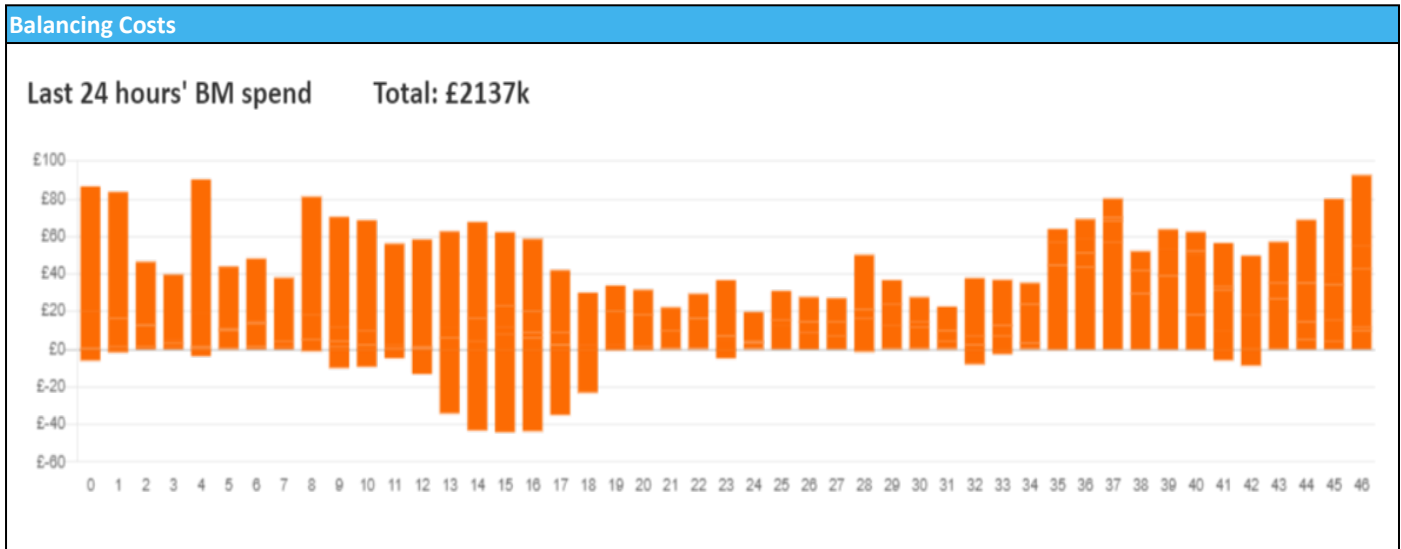


nationalgridESO

National Electricity Transmission System Status Report  
Tuesday 02 April 2024

Today's High Level Risk Status Forecast for the next 24h			
General Status		Voltage	
Demand		System Inertia	
System Margins		Weather	
Generation		Transmission	
Active Constraints			
<a href="#">System Warning</a>			

<a href="#">Today's Minimum De-Rated Margin</a>	9,441.53 (SP 38)	
Current BMU Largest Loss Risk	Generation	1500 MW
	Demand	560 MW



**Yesterday's Market Summary**

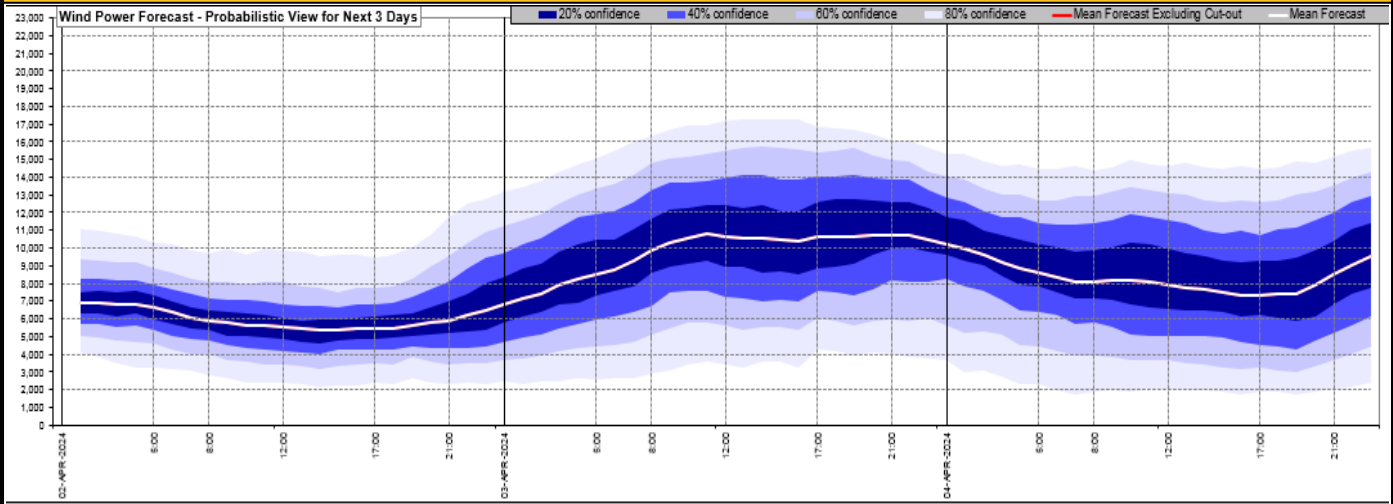
<a href="#">Cash Out Price (Max)</a>	£ 105 (SP 37, 38, 39, 40, 41, 42)
<a href="#">Cash Out Price (Min)</a>	£ 5 (SP 4)
<a href="#">Peak Demand Yesterday</a>	32,165 MW
Minimum Demand	20,770 MW

**Interconnector**

Net Transfer Capacity (MWs)

Today	Import	Export	Remarks
Netherlands (BritNed)	1000	1000	Fully Available
France (IFA)	1000	1000	Partially Available
Belgium (Nemo)	1000	1000	Fully Available
Ireland (EWIC)	500	500	Fully Available
France (ElecLink)	1000	1000	Fully Available
Northern Ireland (MOYLE)	500	500	Fully Available
Norway (NSL)	1400	1400	Fully Available
France (IFA2)	1014	1014	Fully Available
Viking Link	1430	1430	Fully Available

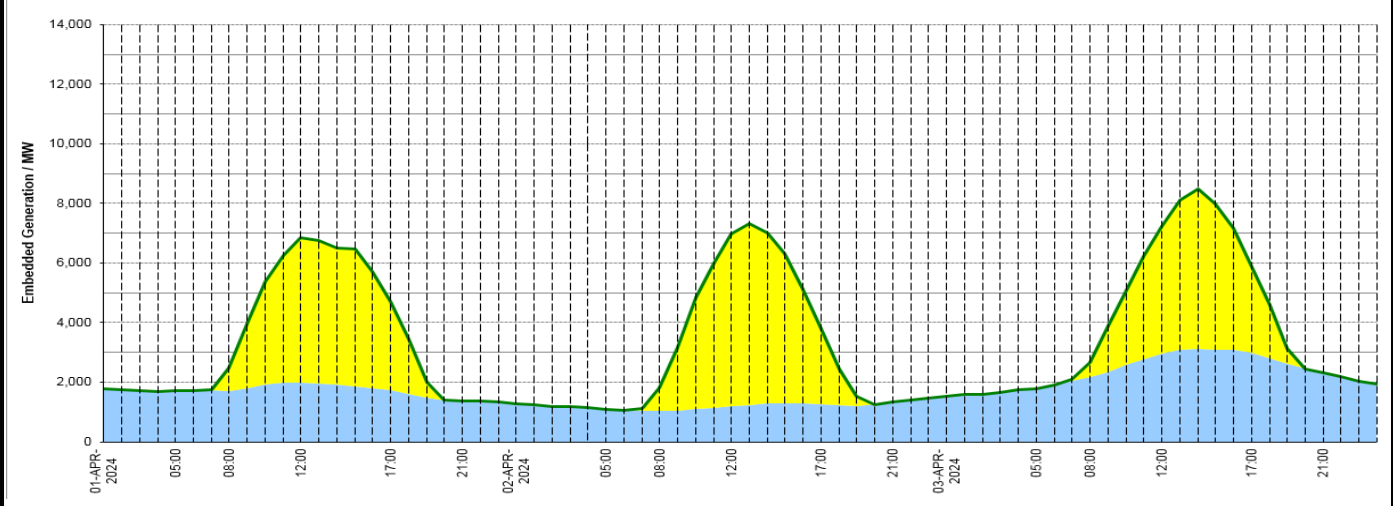
**Wind Power Forecast**



**Expected embedded generation (MWs)**

**Embedded Generation Forecast**

Embedded Generation Estimates														Last run: 02-Apr-2024 04:32:30			
	01-APR-2024					02-APR-2024					03-APR-2024						
	05:00	08:00	12:00	17:00	21:00	00:00	05:00	08:00	12:00	17:00	21:00	00:00	05:00	08:00	12:00	17:00	21:00
Solar (MW)	0	744	4852	2957	0	0	0	784	5751	2516	0	0	0	499	4267	2885	0
Wind (MW)	1721	1714	1998	1744	1380	1282	1100	1030	1211	1267	1343	1518	1791	2177	2958	2999	2312
STOR (MW)	0	0	0	0	0	0	0	0	0	0	0	0	0	0	0	0	0
<b>Total (MW)</b>	<b>1721</b>	<b>2458</b>	<b>6850</b>	<b>4701</b>	<b>1380</b>	<b>1282</b>	<b>1100</b>	<b>1814</b>	<b>6962</b>	<b>3783</b>	<b>1343</b>	<b>1518</b>	<b>1791</b>	<b>2676</b>	<b>7225</b>	<b>5884</b>	<b>2312</b>



Weather	Source	Commentary
Latest forecast (Summary)	<a href="#">Met Office</a> <a href="#">SEPA</a> <a href="#">Natural Resources Wales</a>	<b>Today:</b> Cloudy and cold in Scotland today with outbreaks of rain. A drier start elsewhere with some bright spells, although scattered showers will break out in places. Persistent rain will move into the southwest later in the afternoon. <b>Tonight:</b> Rain spreading north across the UK tonight. Gradually turning drier in southern England with some clear spells. A mild night for most, but a patchy frost developing in northern Scotland.
General Weather Concerns e.g. wind, rain, snow, flooding, GB Weather Warnings	<a href="#">Met Office</a> <a href="#">Weather Warnings</a> <a href="#">SEPA</a> <a href="#">Natural Resources Wales</a>	<b>UK Weather Warnings</b> No weather warnings are in force for the UK <b>Flood Warnings</b> 2 flood warnings and 94 flood alerts issued for England. 0 flood warnings and 0 flood alerts issued for Scotland. 0 flood warnings and 0 flood alerts issued for Wales

Contains public sector information licensed under the Open Government Licence v1.0

Further Information	
BM Reports	<a href="https://www.bmreports.com">https://www.bmreports.com</a>
System Balancing Reports	<a href="https://www.nationalgrideso.com/industry-information/industry-data-and-reports/system-balancing-reports">https://www.nationalgrideso.com/industry-information/industry-data-and-reports/system-balancing-reports</a>
Forecast Volumes and Costs	<a href="https://www.nationalgrideso.com/industry-information/industry-data-and-reports/forecast-volumes-and-costs">https://www.nationalgrideso.com/industry-information/industry-data-and-reports/forecast-volumes-and-costs</a>