

# National Electricity Transmission System Status Report

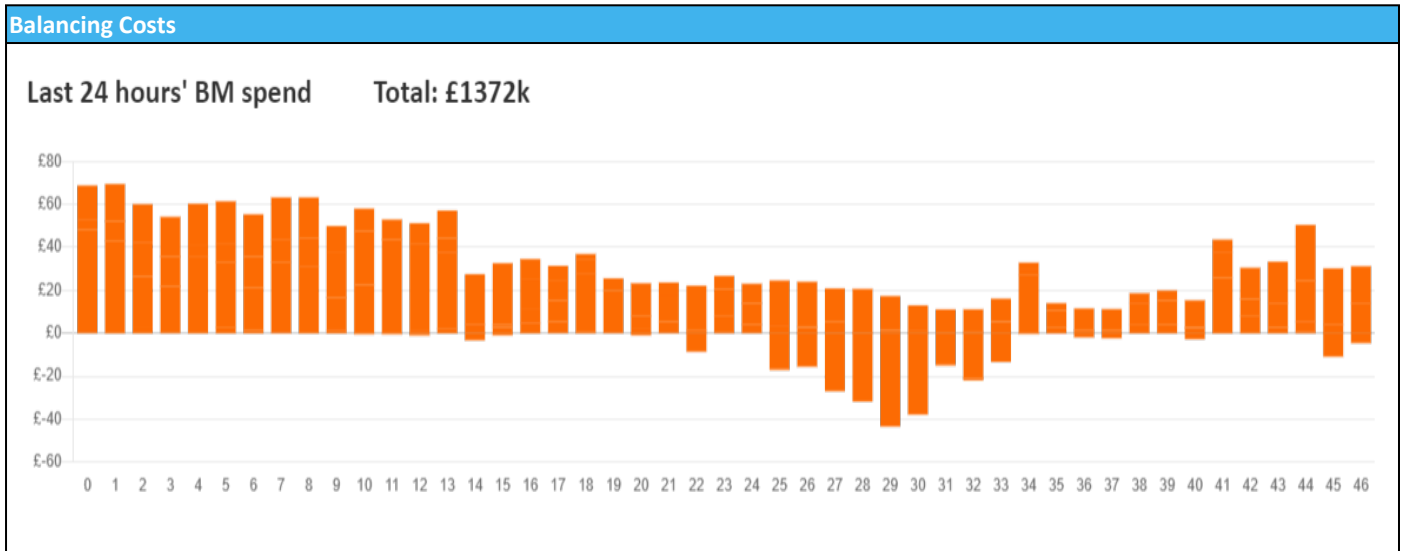


nationalgridESO

**National Electricity Transmission System Status Report**  
Sunday 31 March 2024

Today's High Level Risk Status Forecast for the next 24h			
General Status		Voltage	
Demand		System Inertia	
System Margins		Weather	
Generation		Transmission	
Active Constraints			
<a href="#">System Warning</a>			

<a href="#">Today's Minimum De-Rated Margin</a>	11,810.5 (SP 39)	
Current BMU Largest Loss Risk	Generation	1500 MW
	Demand	750 MW



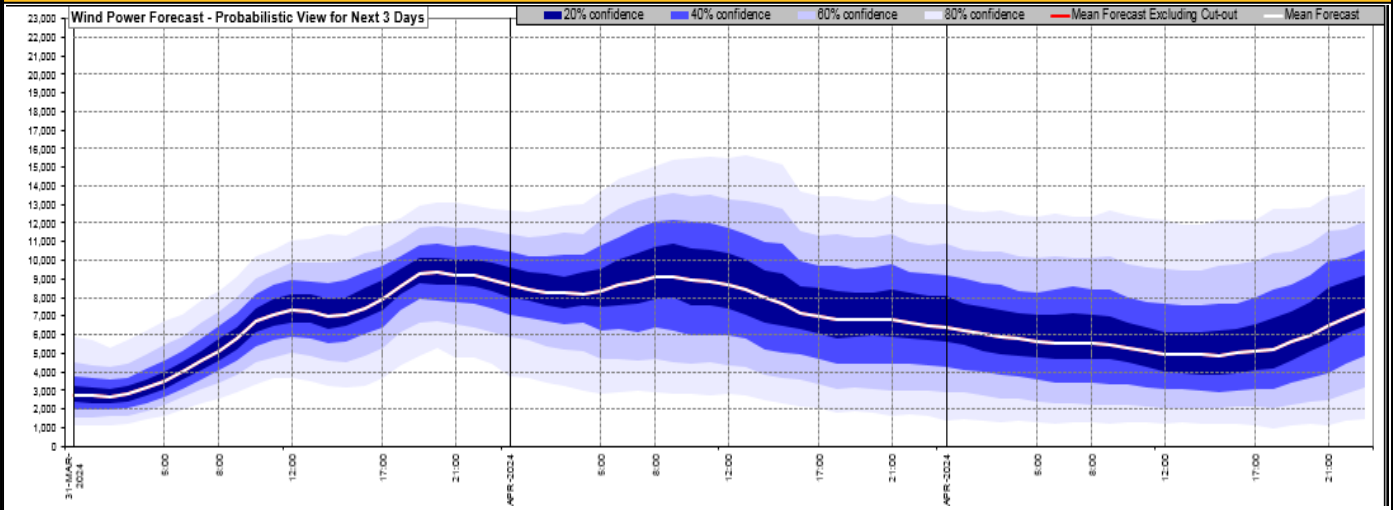
**Yesterday's Market Summary**

<a href="#">Cash Out Price (Max)</a>	£ 109 (SP 36,37)
<a href="#">Cash Out Price (Min)</a>	£ 42.25 (SP 24)
<a href="#">Peak Demand Yesterday</a>	31,520 MW
Minimum Demand	20,071 MW

**Interconnector Net Transfer Capacity (MWs)**

Today	Import	Export	Remarks
Netherlands (BritNed)	1000	1000	Fully Available
France (IFA)	2000	2000	Fully Available
Belgium (Nemo)	1000	1000	Fully Available
Ireland (EWIC)	500	500	Fully Available
France (ElecLink)	1000	1000	Fully Available
Northern Ireland (MOYLE)	500	500	Fully Available
Norway (NSL)	1400	1400	Fully Available
France (IFA2)	1014	1014	Fully Available
Viking Link	1430	1430	Fully Available

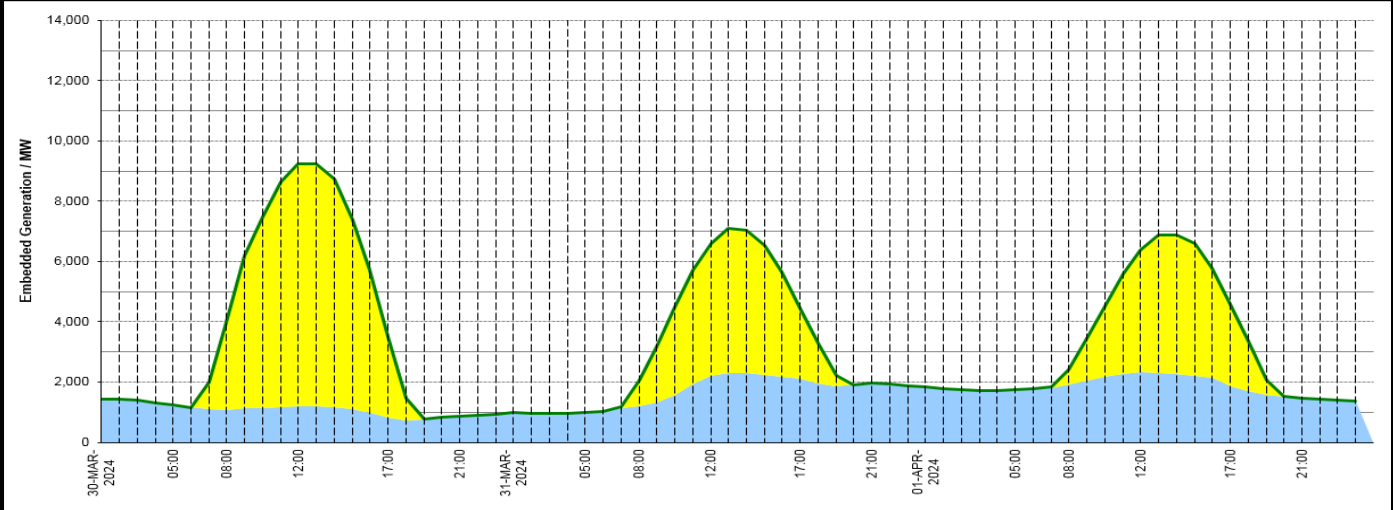
**Wind Power Forecast**



**Expected embedded generation (MWs)**

**Embedded Generation Forecast**

Embedded Generation Estimates																Last run: 31-Mar-2024 04:32:42	
30-MAR-2024					31-MAR-2024					01-APR-2024							
	05:00	08:00	12:00	17:00	21:00	00:00	05:00	08:00	12:00	17:00	21:00	00:00	05:00	08:00	12:00	17:00	21:00
Solar (MW)	0	2892	8040	2694	0	0	0	859	4415	2346	0	0	0	477	4051	2733	0
Wind (MW)	1236	1086	1189	822	871	1004	984	1212	2195	2117	1967	1831	1747	1923	2328	1851	1472
STOR (MW)	0	0	0	0	0	0	0	0	0	0	0	0	0	0	0	0	0
<b>Total (MW)</b>	<b>1236</b>	<b>3978</b>	<b>9229</b>	<b>3516</b>	<b>871</b>	<b>1004</b>	<b>984</b>	<b>2071</b>	<b>6610</b>	<b>4463</b>	<b>1967</b>	<b>1831</b>	<b>1747</b>	<b>2400</b>	<b>6379</b>	<b>4584</b>	<b>1472</b>



Weather	Source	Commentary
Latest forecast (Summary)	<a href="#">Met Office</a> <a href="#">SEPA</a> <a href="#">Natural Resources Wales</a>	<b>Today:</b> Most areas dry with sunny spells, though turning cloudier across central and eastern England with patchy rain and showers, with low cloud lingering across eastern coasts. Showery rain affecting Cornwall later. Feeling warm in the sunshine further west. <b>Tonight:</b> Spells of rain, some heavy across southern, central and eastern England, pushing into Wales later. Drier in Scotland and parts of Northern Ireland with clear spells and fog patches developing.
General Weather Concerns e.g. wind, rain, snow, flooding, GB Weather Warnings	<a href="#">Met Office</a> <a href="#">Weather Warnings</a> <a href="#">SEPA</a> <a href="#">Natural Resources Wales</a>	<b>UK Weather Warnings</b> No weather warnings are in force for the UK <b>Flood Warnings</b> 13 flood warnings and 125 flood alerts issued for England. 0 flood warnings and 0 flood alerts issued for Scotland. 0 flood warnings and 1 flood alerts issued for Wales

Contains public sector information licensed under the Open Government Licence v1.0

Further Information	
BM Reports	<a href="https://www.bmreports.com">https://www.bmreports.com</a>
System Balancing Reports	<a href="https://www.nationalgrideso.com/industry-information/industry-data-and-reports/system-balancing-reports">https://www.nationalgrideso.com/industry-information/industry-data-and-reports/system-balancing-reports</a>
Forecast Volumes and Costs	<a href="https://www.nationalgrideso.com/industry-information/industry-data-and-reports/forecast-volumes-and-costs">https://www.nationalgrideso.com/industry-information/industry-data-and-reports/forecast-volumes-and-costs</a>