

**National Electricity
Transmission System Status Report**

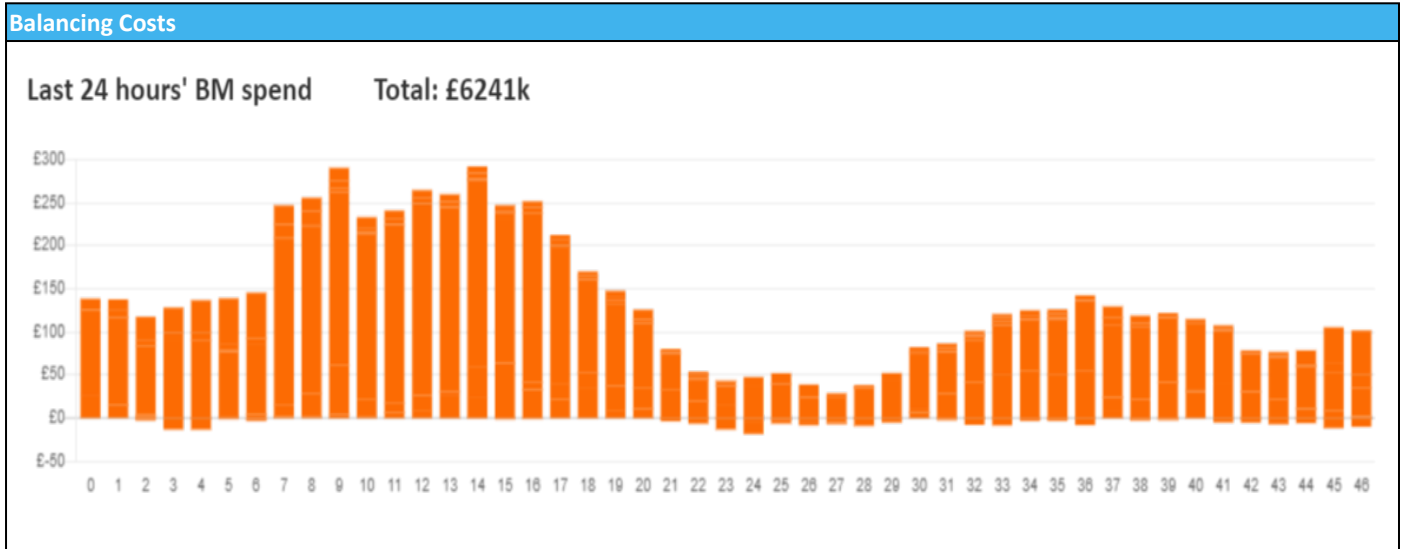


national**grid**ESO

National Electricity Transmission System Status Report
Wednesday 21 February 2024

Today's High Level Risk Status Forecast for the next 24h			
General Status		Voltage	
Demand		System Inertia	
System Margins		Weather	
Generation		Transmission	
Active Constraints			
System Warning			

Today's Minimum De-Rated Margin	13,191 (SP 37)	
Current BMU Largest Loss Risk	Generation	1500 MW
	Demand	560 MW



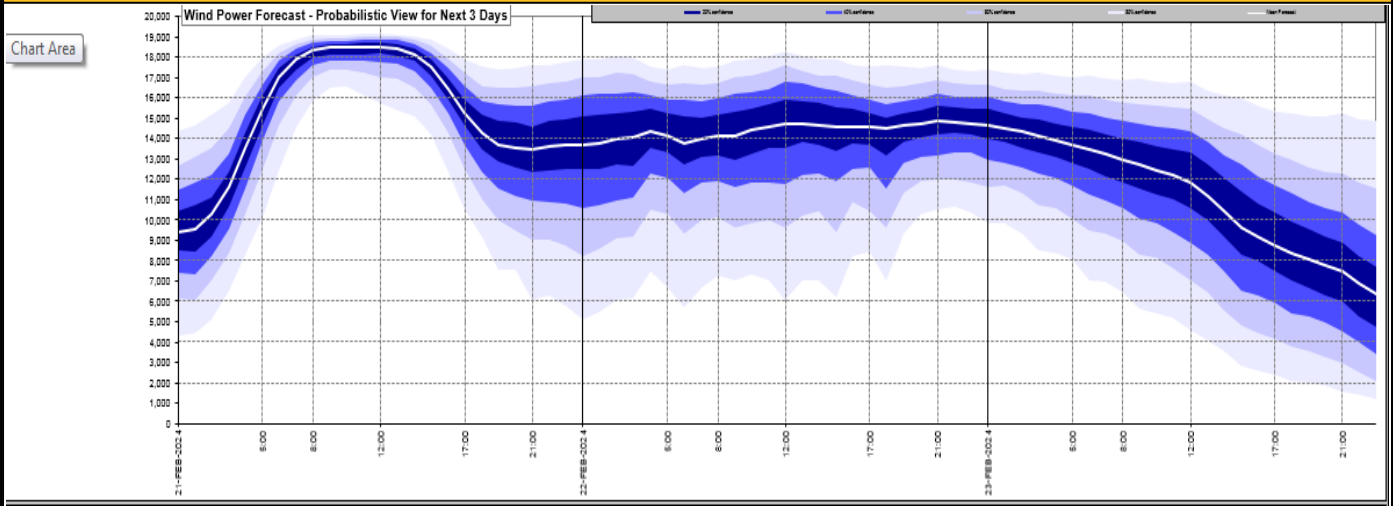
Yesterday's Market Summary

Cash Out Price (Max)	£82.00 (SP 39)
Cash Out Price (Min)	£ 0.00 (SP 30)
Peak Demand Yesterday	38,085 MW
Minimum Demand	20,101 MW

Interconnector Net Transfer Capacity (MWs)

Today	Import	Export	Remarks
Netherlands (BritNed)	1000	1000	Fully Available
France (IFA)	2000	2000	Fully Available
Belgium (Nemo)	1000	1000	Fully Available
Ireland (EWIC)	500	500	Fully Available
France (ElecLink)	1000	1000	Fully Available
Northern Ireland (MOYLE)	500	500	Fully Available
Norway (NSL)	1400	1400	Fully Available
France (IFA2)	0	0	Unavailable
Viking Link	1430	1430	Fully Available

Wind Power Forecast

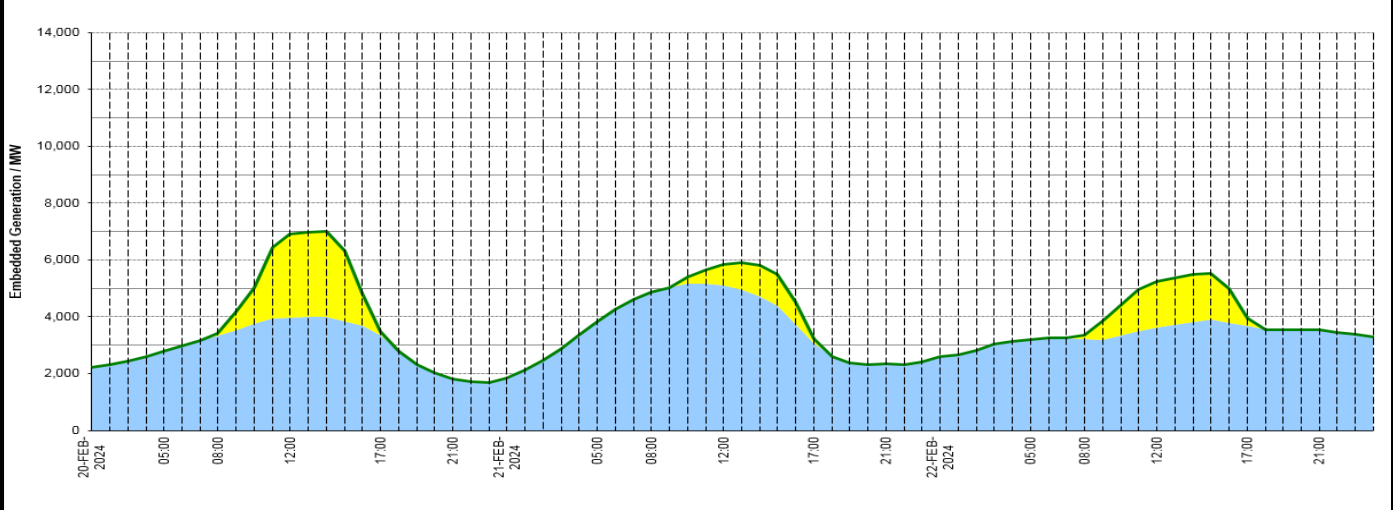


Expected embedded generation (MWs)

Embedded Generation Forecast

Embedded Generation Estimates Last run: 21-Feb-2024 02:32:37

	20-FEB-2024				21-FEB-2024				22-FEB-2024								
	05:00	08:00	12:00	17:00	21:00	00:00	05:00	08:00	12:00	17:00	21:00	00:00	05:00	08:00	12:00	17:00	21:00
Solar (MW)	0	89	2955	148	0	0	0	731	148	0	0	0	0	135	1612	258	0
Wind (MW)	2798	3332	3972	3337	1806	1835	3829	4861	5095	3084	2343	2588	3200	3228	3622	3679	3531
STOR (MW)	0	0	0	0	0	0	0	0	0	0	0	0	0	0	0	0	0
Total (MW)	2798	3421	6927	3485	1806	1835	3829	4861	5826	3232	2343	2588	3200	3363	5234	3937	3531



Weather	Source	Commentary
Latest forecast (Summary)	Met Office SEPA Natural Resources Wales	Today: A wet and windy morning. Then gradually becoming drier and brighter from the north and west as the day progresses, with some sunshine developing. However some parts of southern and southeast England will remain cloudy and damp all day. Mild. Tonight: Further rain and drizzle across southern counties of England and Wales. A band of heavy, squally rain moving across northwestern parts overnight. Mild in the southeast, colder further north.
General Weather Concerns e.g. wind, rain, snow, flooding, GB Weather Warnings	Met Office Weather Warnings SEPA Natural Resources Wales	UK Weather Warnings Yellow warning of rain Areas affected: South West England Wales ACTIVEStarted at: 00:00 GMT on Wed 21 FebruaryEnds: 12:00 GMT on Wed 21 February Heavy rain may result in some flooding and disruption on Wednesday morning. - A few homes and businesses flooded - Bus and train services affected with journeys taking longer - Spray and flooding on roads will make journey times longer - Some interruption to power supplies and other services

Weather	Source	Commentary
		<p>Flood Warnings 23 flood warnings and 178 flood alerts issued for England.</p> <p>0 flood warnings and 2 flood alerts issued for Scotland.</p> <p>0 flood warnings and 16 flood alerts issued for Wales</p>

Contains public sector information licensed under the Open Government Licence v1.0

Further Information	
BM Reports	https://www.bmreports.com
System Balancing Reports	https://www.nationalgrideso.com/industry-information/industry-data-and-reports/system-balancing-reports
Forecast Volumes and Costs	https://www.nationalgrideso.com/industry-information/industry-data-and-reports/forecast-volumes-and-costs